

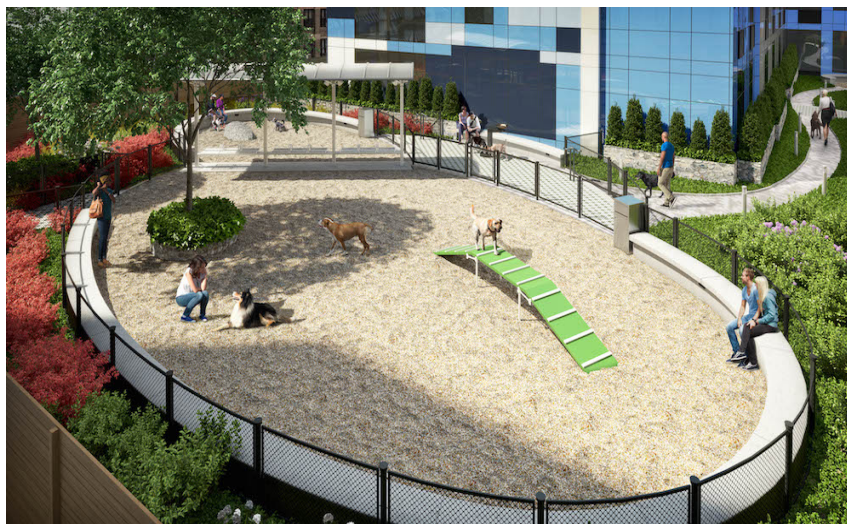


9. Dog Run

Definition	Fenced area where dogs can run off-leash while supervised
Size	5,000 square feet, with adequate linear area for running and exercise.
Location	Accessible location within central business district area; integrated into local public park; Integrated into residential development as a roof-top facility or indoor dog room. .
Design Criteria	<p>Fence should be high enough to prevent dogs from jumping over.</p> <p>Include a double gated entrance to separate incoming and outgoing, large and small dogs. Provide watering stations for dogs and owners.</p> <p>Include separate play areas for different sizes of dogs.</p> <p>Provide a variety of activity types: jumping, running, agility practice for dogs.</p> <p>Include benches and seating areas for owners with clear view of play area and clear visibility of the animals..</p> <p>Include shaded areas (gazebos, canvas shade structures or shade trees).</p> <p>Provide dry and wet stations for dog play.</p>
Elements	Fencing, benches, picnic tables, movable seating, watering stations, shade structures
Screening/Landscaping	Perimeter landscape for screening if space is available; Tree areas for shading.

Supply Values

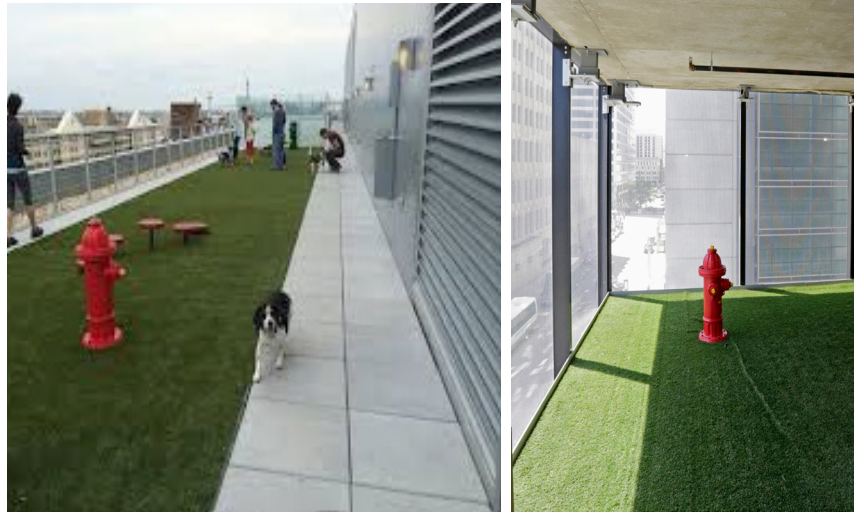
	Tots	Children	Teens	Young Adults	Adults	Seniors
Dog Run	0	2	4	5	6	6



Dog run provided for the AVA Dobro, Brooklyn, NY



Dog Run Examples



Clockwise from top left:

*Roof-top dog run,
City Market at O Street,
Washington, DC*

Indoor dog run, Optima Center, Chicago, IL

Public dog run, Yards Park, Washington, DC

Private outdoor dog run, Minneapolis, MN

*Note components: water supply, variety of
ground materials, seating, shade.*