

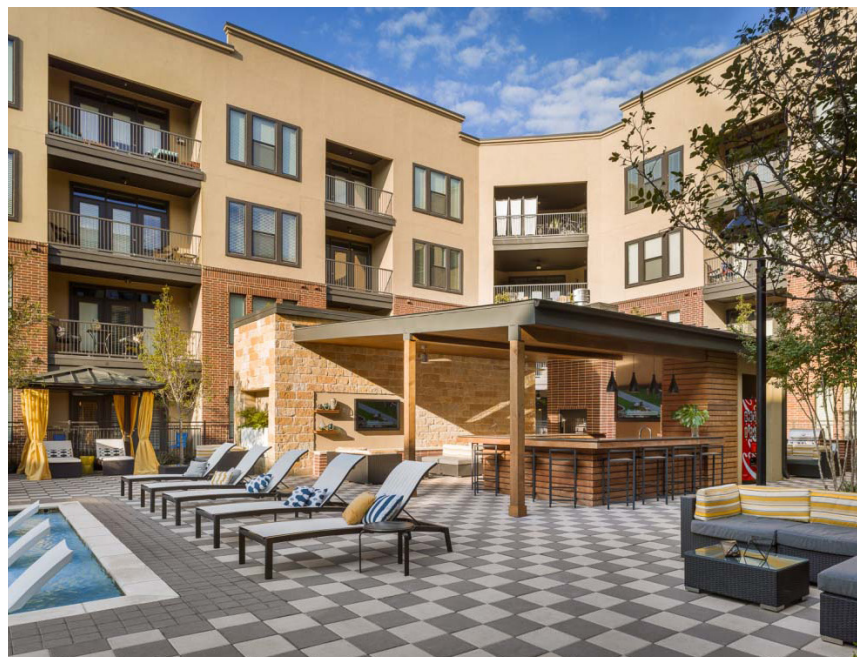


32. Interior Courtyard, Garden or Lawn

Definition	An outdoor room contained within the building for social engagement and group activities.
Size	Depending on building size and configuration, minimum 1,200 square feet.
Possible Activities	Seating, small group gathering, reading, movie watching, limited cooking.
Design Criteria	<p>Provide an open and inviting area with multiple seating areas for individual or group use where a variety of social interactions can occur simultaneously.</p> <p>Include technology such as TV screens, sound system and WiFi access.</p> <p>Consider access to natural light, trees, and connections to other communal areas such as gardens or terraces.</p>

Supply Values

	Tots	Children	Teens	Young Adults	Adults	Seniors
Residential Interior Courtyard	2	3	4	7	7	5



Interior court, West Plano Apartments, Plano, TX



Interior Courtyard Examples

*Residential interior courtyard,
540 West 49th Street,
New York, NY*



*Interior courtyard,
Shady Commons Rentals,
Pittsburgh, PA*



*Interior courtyard,
Amalgamated Housing Cooperative,
Bronx, NY*

