



40. Pocket Green

Definition	A small scale urban open space tucked into urban fabric.
Size	Approximately 1/4 acre or less.
Possible Activities	Seating, small group gathering.
Location	Integrated with development, within a high density development area.
Design Criteria	<p>Defined by building walls on at least three sides; these may or may not support activating uses, such as retail.</p> <p>Direct access to a local street.</p> <p>Visibility and access from adjacent sidewalks, streets and buildings.</p> <p>Primarily hardscape - should consider pervious surfaces if feasible.</p> <p>Include planting areas, water features, a variety of seating options and public art. The space should relate to its context and the public realm with respect to identity, access, routing, visual cues and activities. The green should be so placed as to connect easily to a series of public spaces, forming a link in a chain of public amenities. The pocket green may provide a setting for social gatherings or a commemorative setting, contemplative in nature for rest and reflection or study.</p>

Supply Values

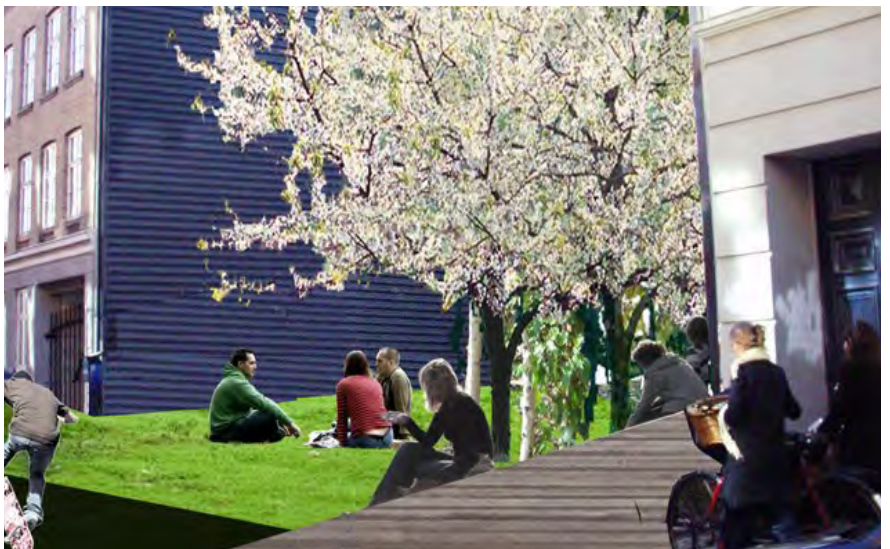
	Tots	Children	Teens	Young Adults	Adults	Seniors
Pocket Green	3	5	5	8	8	6



*John F. Collins (formerly Chestnut) Park,
Philadelphia, PA*



Examples of Pocket Greens



*From top:
Pocket Park, Gallery Bethesda,
Bethesda, MD*

*Proposed Ripley Pocket Park,
By Artspace, Silver Spring, MD
Photo: D. Reed,
Pocket Park,
Copenhagen, Denmark,
Danish Architecture Center*