

SECTIONAL MAP AMENDMENT H-108
for the
SANDY SPRING RURAL VILLAGE PLAN



CERTIFICATION

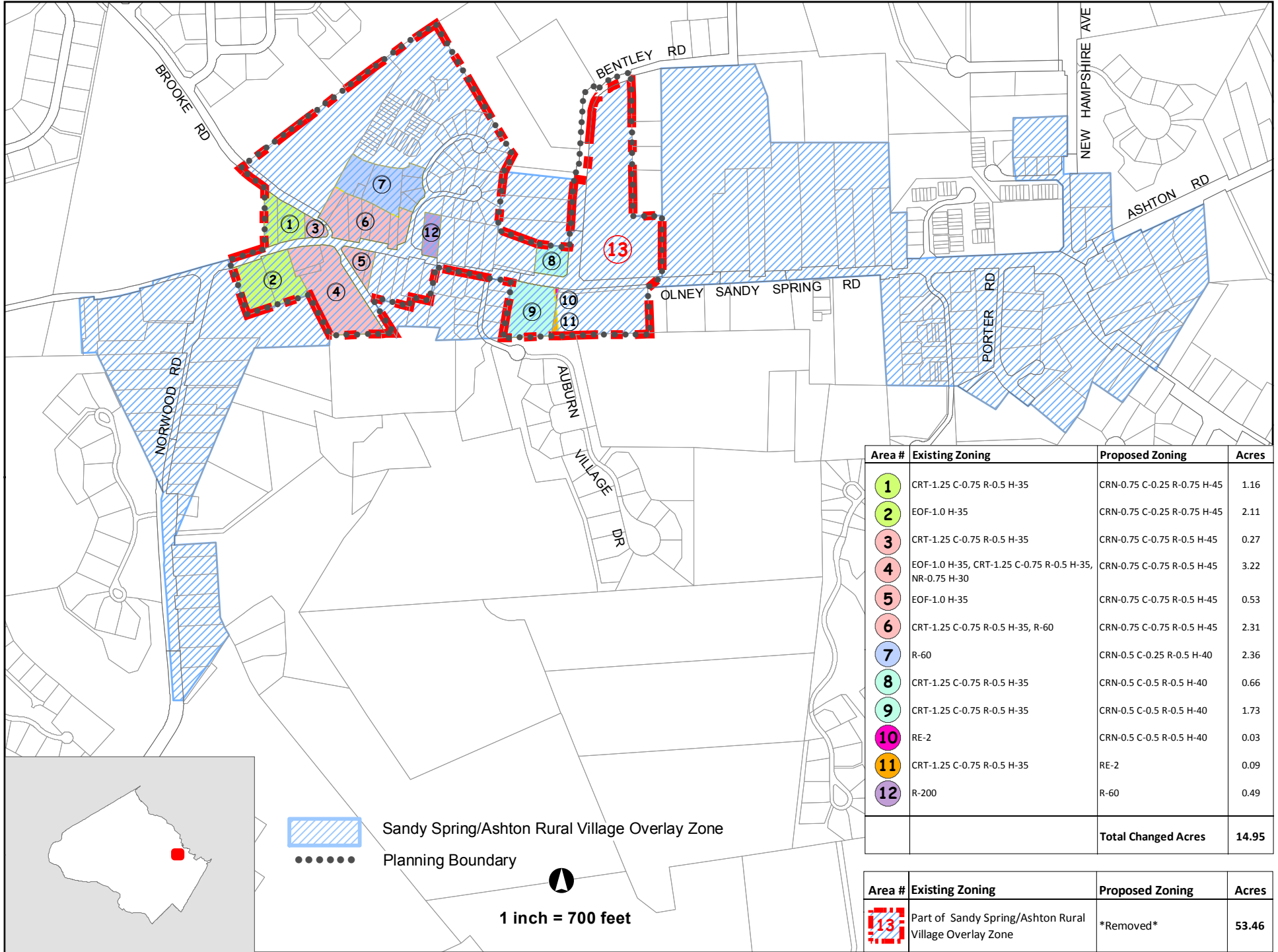
This is to certify that the Sector Plan Map index displaying the changes involved in this application, and base maps as shown herein are certified copies of the digital zoning map on which existing and proposed zone boundaries are delineated by both line and text, are correct as shown; and by this certification, they are hereby part of the Maryland-National Capital Park and Planning Commission's Application as required by the Zoning Ordinance, for the Maryland-Washington Regional District in Montgomery County, Maryland.

3/26/2015

Date

John Carter
Division Chief
Area 3 Division

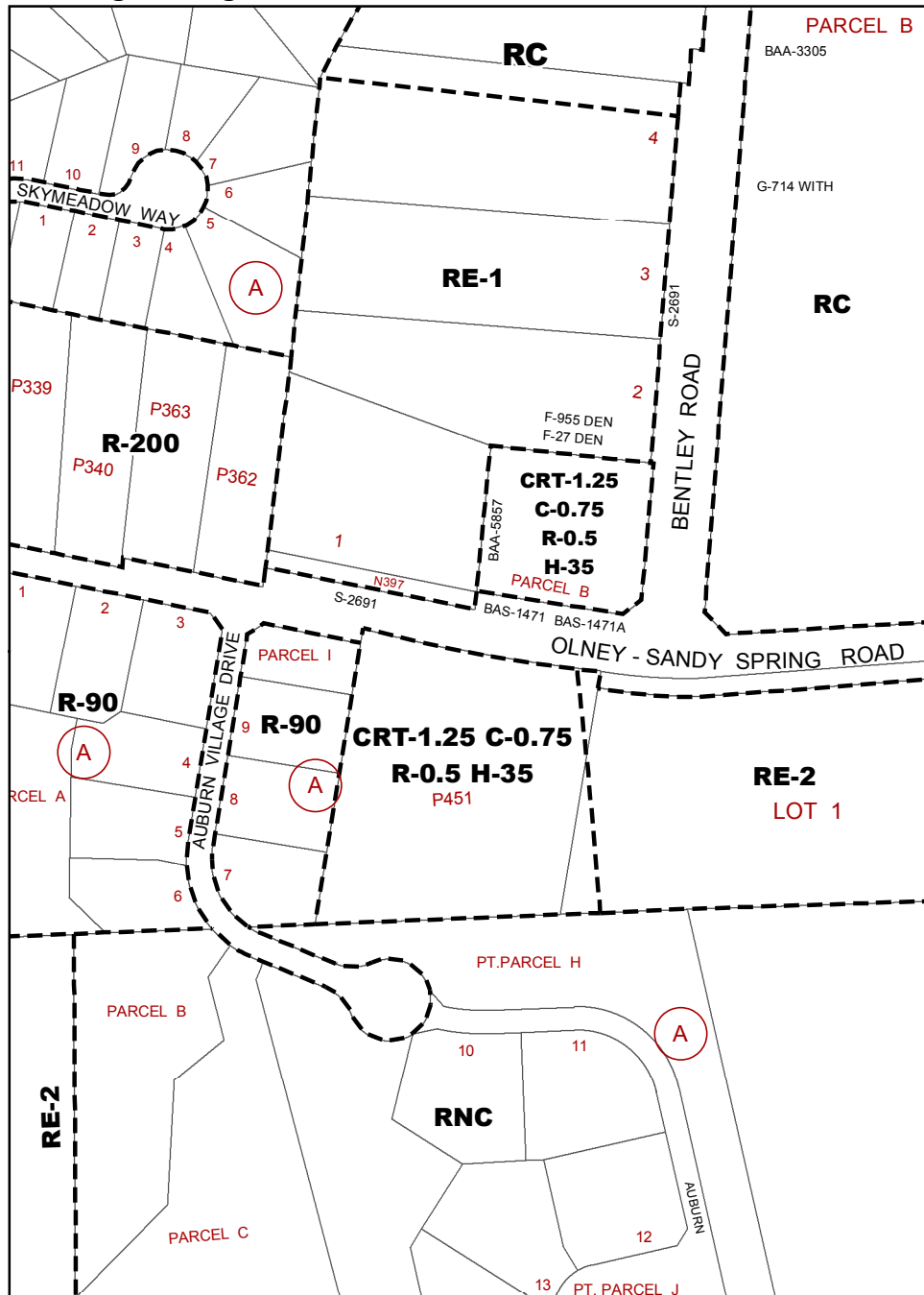
SECTIONAL MAP AMENDMENT FOR SANDY SPRING RURAL VILLAGE PLAN



Area #	Existing Zoning	Proposed Zoning	Acres
1	CRT-1.25 C-0.75 R-0.5 H-35	CRN-0.75 C-0.25 R-0.75 H-45	1.16
2	EOF-1.0 H-35	CRN-0.75 C-0.25 R-0.75 H-45	2.11
3	CRT-1.25 C-0.75 R-0.5 H-35	CRN-0.75 C-0.75 R-0.5 H-45	0.27
4	EOF-1.0 H-35, CRT-1.25 C-0.75 R-0.5 H-35, NR-0.75 H-30	CRN-0.75 C-0.75 R-0.5 H-45	3.22
5	EOF-1.0 H-35	CRN-0.75 C-0.75 R-0.5 H-45	0.53
6	CRT-1.25 C-0.75 R-0.5 H-35, R-60	CRN-0.75 C-0.75 R-0.5 H-45	2.31
7	R-60	CRN-0.5 C-0.25 R-0.5 H-40	2.36
8	CRT-1.25 C-0.75 R-0.5 H-35	CRN-0.5 C-0.5 R-0.5 H-40	0.66
9	CRT-1.25 C-0.75 R-0.5 H-35	CRN-0.5 C-0.5 R-0.5 H-40	1.73
10	RE-2	CRN-0.5 C-0.5 R-0.5 H-40	0.03
11	CRT-1.25 C-0.75 R-0.5 H-35	RE-2	0.09
12	R-200	R-60	0.49
Total Changed Acres			14.95

Area #	Existing Zoning	Proposed Zoning	Acres
13	Part of Sandy Spring/Ashton Rural Village Overlay Zone	*Removed*	53.46

Existing Zoning



Proposed Zoning

