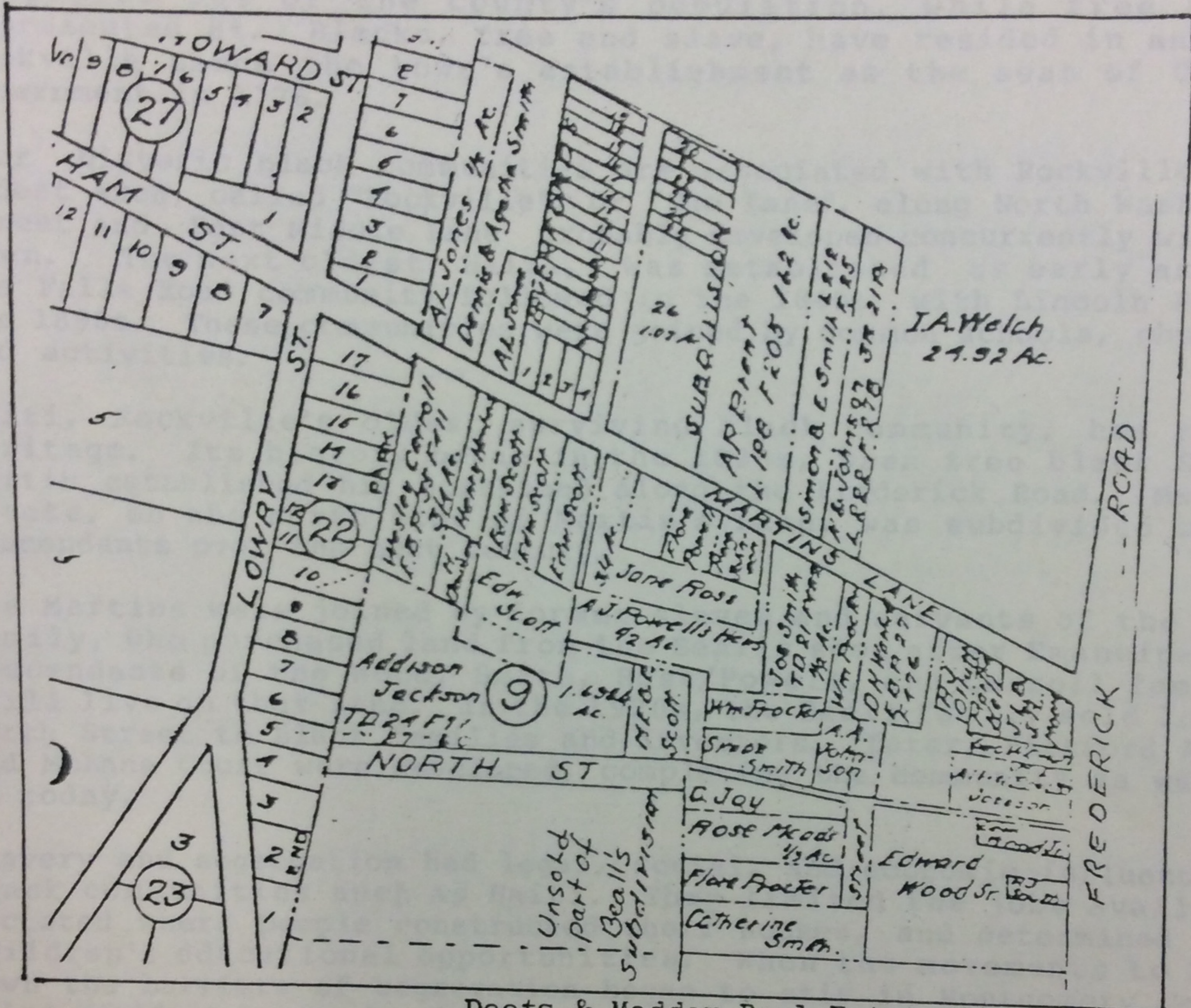


HAITI/MARTIN'S LANE
 STUDY OF AN HISTORIC BLACK COMMUNITY - 1988

A BRIEF OVERVIEW



Deets & Maddox Real Estate Atlas, 1916

This overview highlights some of the conclusions of a 50-page study prepared by Peerless Rockville entitled "Model Resource Preservation Plan for Historic Black Communities, Focus: Haiti-Martin's Lane, Rockville, Maryland." For a copy, contact Peerless Rockville at Box 4262, Rockville, MD 20850 or telephone 762-0096.

