

TWO MC CEMETERY SITES AFFILIATED WITH WARREN UNITED METHODIST CHURCH

Sandra Youla

Historic Preservation/Montgomery County Planning Dept.

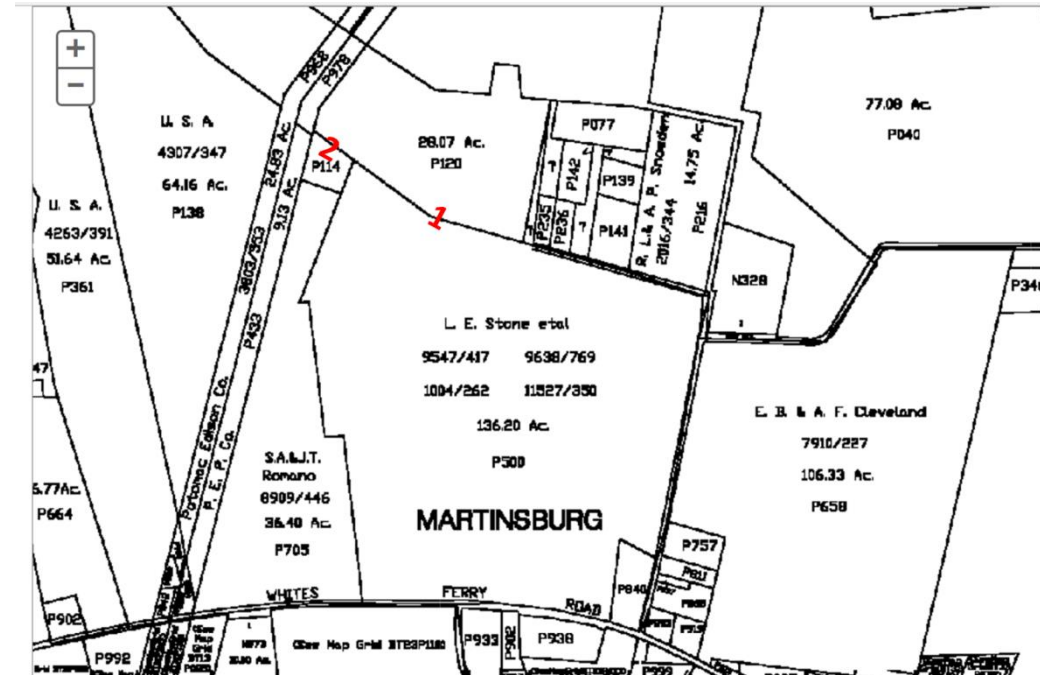
301-563-3419

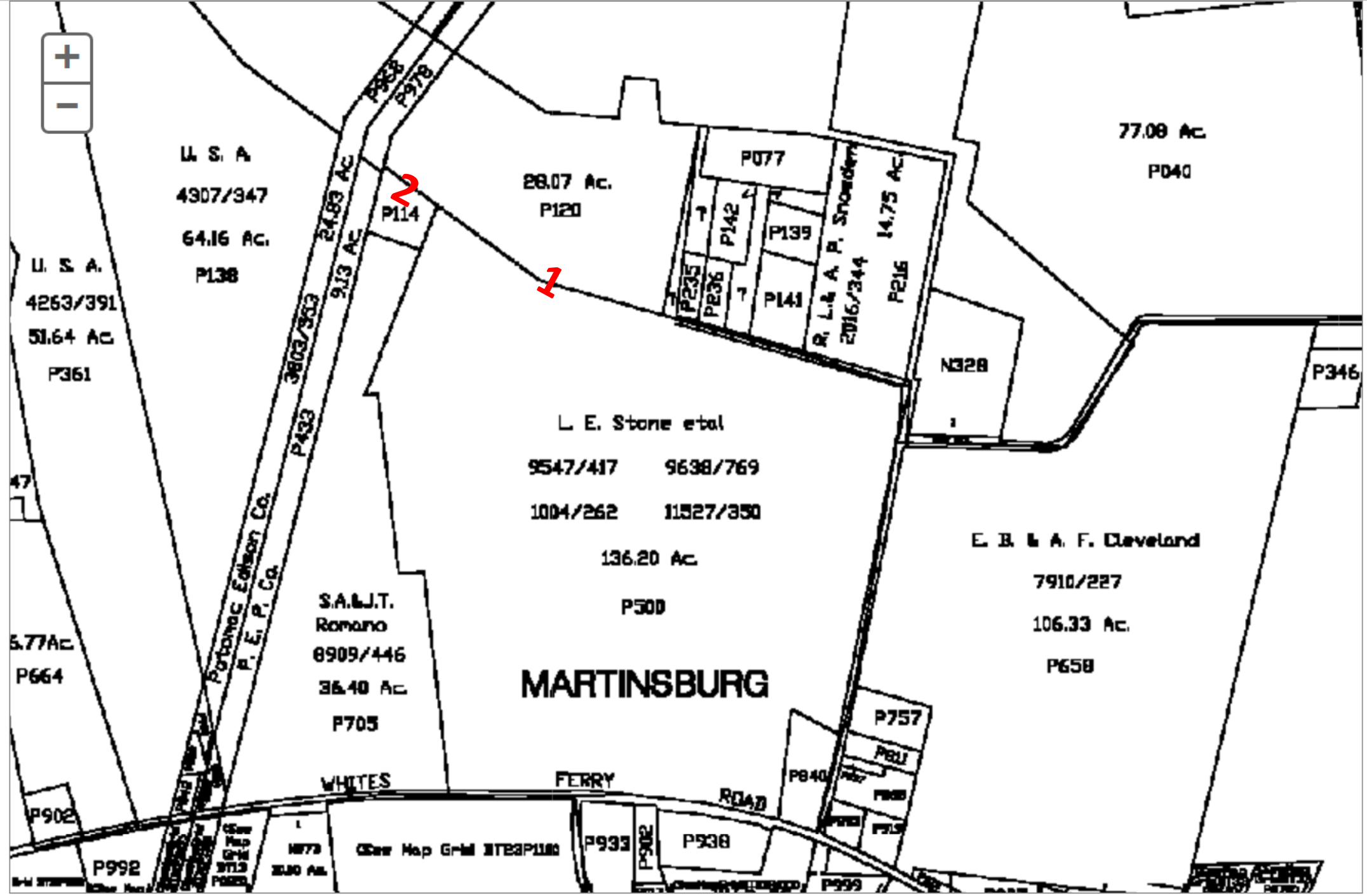
sandra.youla@montgomeryplanning.org

10.27.2016

Located west of Martinsburg Rd, about 0.5 miles north of White's Ferry Rd, in Martinsburg, Montgomery County, MD on:

- 1. P120 (and possibly also P500) -- MC Cemetery Inventory Site #151, in fork of a dirt road in heavily wooded area (P120 owned by Dickerson RE, LLC, and P500 owned by L.E. Stone et al) – OLDER CEMETERY**
- 2. P114 (and possibly also P120), further west at the end of the dirt road (P114 owned by Leonard Coleman et al Trustees, Warren UM Church, and P120 owned by Dickerson RE, LLC) – NEWER CEMETERY**





U. S. A.
4307/347
64.16 Ac.
P138

U. S. A.
4263/391
51.64 Ac
P361

28.07 Ac.
P120

P114

P077
P142
P139
P141
R. L. & A. P. Snowden
2016/244
P216
14.75 Ac

77.08 Ac.
P040

L. E. Stone et al
9547/417 9638/769
1004/262 11527/350

136.20 Ac.
P500

E. B. & A. F. Cleveland
7910/227
106.33 Ac.
P658

S.A. & J.T.
Romano
8909/446
36.40 Ac.
P705

5.77 Ac
P664

MARTINSBURG

WHITES

FERRY

ROAD

P757

P811

P812

P813

P814

Clear Map Grid BTEB1180

P993

P902

P938

P992

P902

M773

25.30 Ac.

P999

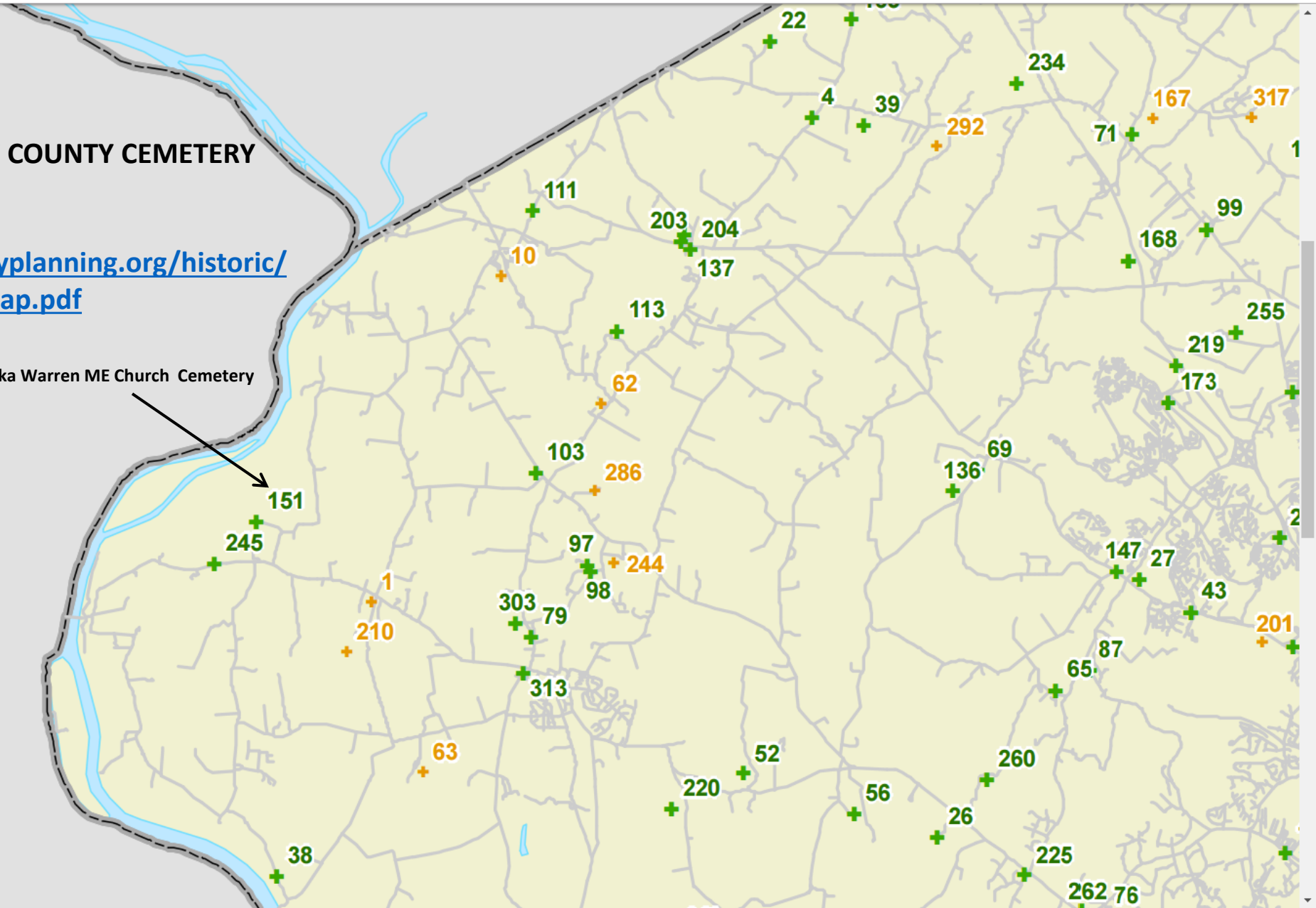
P999

EXCERPT, MONTGOMERY COUNTY CEMETERY
INVENTORY MAP --

See

[http://www.montgomeryplanning.org/historic/
education/documents/map.pdf](http://www.montgomeryplanning.org/historic/education/documents/map.pdf)

#151 Warren UM Church Cemetery, aka Warren ME Church Cemetery



Montgomery County Cemeteries

EXCERPT, MONTGOMERY COUNTY CEMETERY INVENTORY --

See

<http://www.montgomeryplanning.org/historic/education/documents/cemeteries151-175.pdf>

Name: Warren United Methodist Church Cemetery **ID:** 151

Alternate Name: Warren Meth. Epis. Church, Warren's Chapel

Address: 19100 block of Martinsburg Road

Town: Martinsburg

ADC Map: 15 **Grid:** D-3

Cemetery Association: Free Black, Methodist

Setting: Rural/Forested

Condition: Poor

Negative Impacts: Very overgrown except one area

Burials: 19+

Date range of burials: ? - 1997

Description: Cemetery is not near church building. It's to west of Martinsburg Rd. approx. 1/2 mile north of White's Ferry Rd. (continue straight onto unnamed dirt road where Martinsburg takes a sharp right).

Comments: Located in fork of dirt road in heavily wooded area. Mostly handmade markers and funeral home plaques, one or 2 professionally made. Several unmarked depressions.

Survey date: 10/9/2004

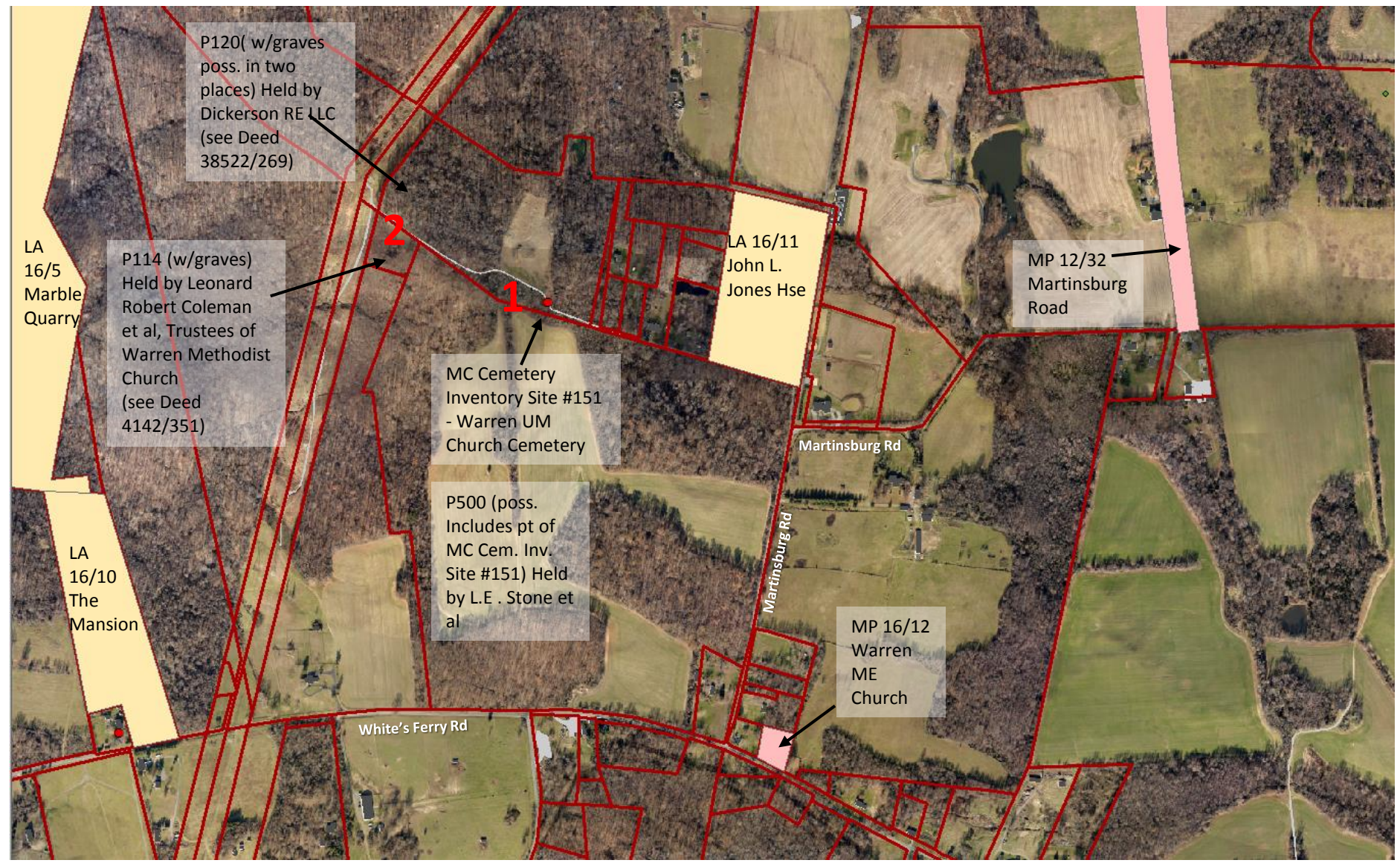
Historic Status:

Additional Sources:

AERIAL

- Yellow = LA Site**
- Pink = MC MP Historic site**
- Red dot = MC Cemetery Inventory Site #151, per GIS map**
- Red line = Parcel Boundary**
- 1 = Older Cemetery (#151)**
- 2 = Newer Cemetery**

LA = Locational Atlas (possible historic resource)
MP = Master Plan for Historic Preservation (designated historic resource)



2000 SURVEY
Excerpt from MC Deed
2350/405
(P120 now owned by Dickerson RE LLC)

20094
b00
20350
405

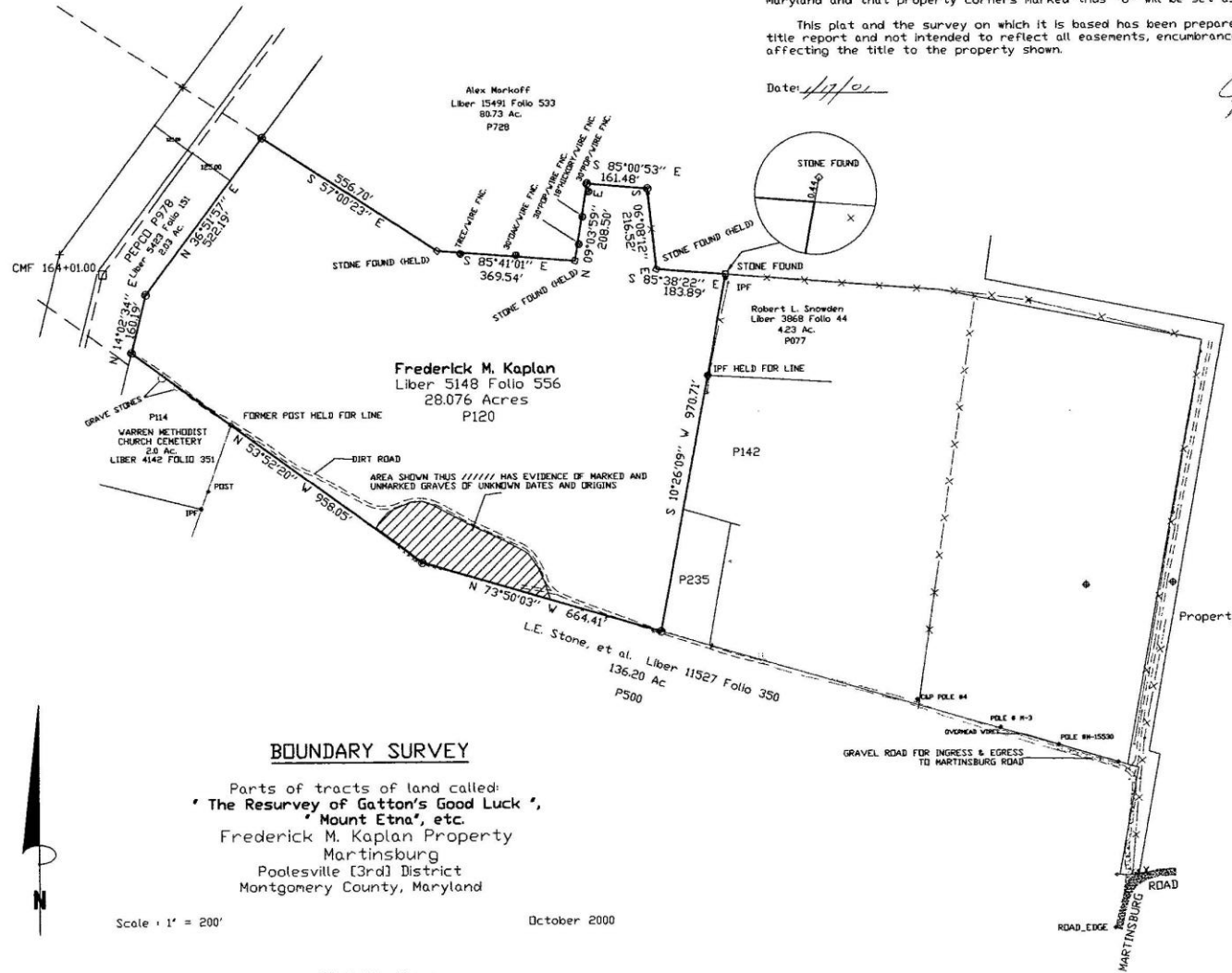
Surveyors Certificate

I herby certify that the plan shown hereon is of an on-the-ground survey that has been performed by me, that it's a survey of all of the land conveyed from George F. Nailor, et al to Frederick M. Kaplan for 22.15 acres of land, more or less by deed dated June 12, 1978 and recorded in Liber 5148 at Folio 556 one of the land records of Montgomery County, Maryland and that property corners marked thus -o- will be set as indicated.

This plat and the survey on which it is based has been prepared without the benefit of a title report and not intended to reflect all easements, encumbrances or other circumstances affecting the title to the property shown.

Date: 1/17/01

John E. Poole Jr.
John E. Poole Jr., Surveyor
Property Line Surveyor #588



Frederick M. Kaplan
Liber 5148 Folio 556
28.076 Acres
P120

P114
WARREN METHODIST CHURCH CEMETERY
2.0 AC.
LIBER 4142 FOLIO 351

Alex Markoff
Liber 15491 Folio 533
80.73 Ac.
P728

Robert L. Snowden
Liber 3868 Folio 44
4.23 Ac.
P077

L.E. Stone, et al. Liber 11527 Folio 350
136.20 Ac
P500

Property Owner: Frederick M. Kaplan
18930 Abbotsford Circle
Germantown, Maryland 20876-1716
Property identified as:
P120 - Tax Map BU21
Tax Acct. #01822881
Existing Zoning: RDT

BOUNDARY SURVEY

Parts of tracts of land called:
'The Resurvey of Gatton's Good Luck',
'Mount Etna', etc.
Frederick M. Kaplan Property
Martinsburg
Poolesville [3rd] District
Montgomery County, Maryland



Scale • 1" = 200'

October 2000

R.K. Maddox Surveys
4011 Baker Valley Road
Frederick, Maryland 21704
Telephone: 301-279-7725

Table Of Contents

- Layers
 - Historic Preservation Information
 - Historic Preservation Information - New
 - Zoning - as amended
 - Lyttonsville Rosemary Hills Sector Plan
 - Master Plans - MARC Rail Communities
 - Master Plans - Westbard Sector Plan 201
 - WSSC Grids
 - Subdivisions
 - Boundaries - Zipcodes
 - Prince George's County Base Layers (200
 - Prince George's County Property
 - WOSG
 - MDP Property Maps
 - Property Points
 - Master Plan Highways
 - County Boundary
 - Montgomery County Zoning
 - Planning Areas
 - rdt_zones
 - Independen Municipalities Zoning
 - Boundaries - Zipcodes.lyr
 - planning2009
 - Rustic Roads
 - Statewide Road Map
 - Properties (Parcels and Condos)
 - Condos
 - Property_poly_with_data layer
 - Parcel Boundaries
 - Buildings & Parking Lots
 - Building Footprints
 - Parking Lots & other Transportation
 - 1865 MC by Martenet and Bond
 - Agricultural Soils Map (MD Geo. Survey, Soils (1996)
 - Historic Preservation Information - Orig
 - Aerials
 - Transportation & Utilities
 - Hydrologic Features





Feedback Tips Previous Version

100 feet 25 m

Pictometry Bird's Eye © 2016 Pictometry International Corp



Feedback Tips Previous Version

100 feet 25 m

Pictometry Bird's Eye © 2016 Pictometry International Corp



Navigation controls including a back arrow, a compass, zoom in (+) and zoom out (-) buttons, and a pan control with arrows.

Feedback Tips Previous Version
50 feet 20 m
Pictometry Bird's Eye © 2016 Pictometry International Corp



Feedback Tips Previous Version

25 feet 10 m

Pictometry Bird's Eye © 2016 Pictometry International Corp

Table Of Contents

- Layers
- Historic Preservation Information
- Historic Preservation Information - New
- Zoning - as amended
- Lyttonsville Rosemary Hills Sector Plan
- Master Plans - MARC Rail Communities Plan
- Master Plans - Westbard Sector Plan 2014
- WSSC Grids
- Subdivisions
- Boundaries - Zipcodes
- Prince George's County Base Layers (2005)
- Prince George's County Property
- WOSG
- MDP Property Maps
- Property Points
- Master Plan Highways
- County Boundary
- Montgomery County Zoning
- Planning Areas
- rdt_zones
- Independent Municipalities Zoning
- Boundaries - Zipcodes.lyr
- planning2009
- Rustic Roads
- Statewide Road Map
- Properties (Parcels and Condos)
- Buildings & Parking Lots
- 1865 MC by Martenet and Bond
- Agricultural Soils Map (MD Geo. Survey, 1916)
- Soils (1996)
- Historic Preservation Information - Original
- Aerials
- Transportation & Utilities
- Hydrologic Features
- Natural Resources Base Map
- Forest Conservation Easements
- GIS1.heritage_areas
- GISADMIN.up_survey_area
- Elevation (from 2008 LiDAR)
- Agricultural Easements
- Zoning - Overlay Zones
- Zoning (CAD Symbology)
- Zoning Cases
- Zoning History Annotation
- Places of Interest



test - ArcMap

File Edit View Bookmarks Insert Selection Geoprocessing Customize Windows Help

1:3.351

Historic Preservation Infor

500

Address

Table Of Contents

Layers

- Historic Preservation Information
- Historic Preservation Information - New
- Zoning - as amended
- Lyttonsville Rosemary Hills Sector Plan
- Master Plans - MARC Rail Communities
- Master Plans - Westbard Sector Plan 201
- WSSC Grids
- Subdivisions
- Boundaries - Zipcodes
- Prince George's County Base Layers (200
- Prince George's County Property
- WOSG
- MDP Property Maps
- Property Points
- Master Plan Highways
- County Boundary
- Montgomery County Zoning
- Planning Areas
- rdt_zones
- Independent Municipalities Zoning
- Boundaries - Zipcodes.lyr
- planning2009
- Rustic Roads
- Statewide Road Map
- Properties (Parcels and Condos)
 - Condos
- Property_poly_with_data layer
- Parcel Boundaries
- Buildings & Parking Lots
- 1865 MC by Martenet and Bond
- Agricultural Soils Map (MD Geo. Survey,
- Soils (1996)
- Historic Preservation Information - Origi
- Aerials
- Transportation & Utilities
- Hydrologic Features
- Natural Resources Base Map
- Forest Conservation Easements
- GIS1.heritage_areas
- GISADMIN.up_survey_area

Drawing

10

B I U A

1176070.247 547889.014 Feet

Windows taskbar showing icons for Internet Explorer, Google, Maps, Word, PowerPoint, Outlook, and ArcMap.

Table Of Contents

- Layers
 - Historic Preservation Information
 - Historic Preservation Information - New
 - Zoning - as amended
 - Lyttonsville Rosemary Hills Sector Plan
 - Master Plans - MARC Rail Communities
 - Master Plans - Westbard Sector Plan 201
 - WSSC Grids
 - Subdivisions
 - Boundaries - Zipcodes
 - Prince George's County Base Layers (200
 - Prince George's County Property
 - WOSG
 - MDP Property Maps
 - Property Points
 - Master Plan Highways
 - County Boundary
 - Montgomery County Zoning
 - Planning Areas
 - rdt_zones
 - Independent Municipalities Zoning
 - Boundaries - Zipcodes.lyr
 - planning2009
 - Rustic Roads
 - Statewide Road Map
 - Properties (Parcels and Condos)
 - Condos
 - Property_poly_with_data layer
 - Parcel Boundaries
 - Buildings & Parking Lots
 - Building Footprints
 - Parking Lots & other Transportation
 - 1865 MC by Martenet and Bond
 - Agricultural Soils Map (MD Geo. Survey,
 - Soils (1996)
 - Historic Preservation Information - Origi
 - Aerials
 - Transportation & Utilities
 - Hydrologic Features



Table Of Contents

- Layers
 - Historic Preservation Information
 - Historic Preservation Information - New
 - Zoning - as amended
 - Lyttonsville Rosemary Hills Sector Plan
 - Master Plans - MARC Rail Communities
 - Master Plans - Westbard Sector Plan 201
 - WSSC Grids
 - Subdivisions
 - Boundaries - Zipcodes
 - Prince George's County Base Layers (200
 - Prince George's County Property
 - WOSG
 - MDP Property Maps
 - Property Points
 - Master Plan Highways
 - County Boundary
 - Montgomery County Zoning
 - Planning Areas
 - rdt_zones
 - Independent Municipalities Zoning
 - Boundaries - Zipcodes.lyr
 - planning2009
 - Rustic Roads
 - Statewide Road Map
 - Properties (Parcels and Condos)
 - Condos
 - Property_poly_with_data layer
 - Parcel Boundaries
 - Buildings & Parking Lots
 - Building Footprints
 - Parking Lots & other Transportation
 - 1865 MC by Martenet and Bond
 - Agricultural Soils Map (MD Geo. Survey,
 - Soils (1996)
 - Historic Preservation Information - Origi
 - Aerials
 - Transportation & Utilities
 - Hydrologic Features



Table Of Contents

- Layers
 - Historic Preservation Information
 - Historic Preservation Information - New
 - Zoning - as amended
 - Lyttonsville Rosemary Hills Sector Plan
 - Master Plans - MARC Rail Communities
 - Master Plans - Westbard Sector Plan 2014
 - WSSC Grids
 - Subdivisions
 - Boundaries - Zipcodes
 - Prince George's County Base Layers (2009)
 - Prince George's County Property
 - WOSG
 - MDP Property Maps
 - Property Points
 - Master Plan Highways
 - County Boundary
 - Montgomery County Zoning
 - Planning Areas
 - rdt_zones
 - Independent Municipalities Zoning
 - Boundaries - Zipcodes.lyr
 - planning2009
 - Rustic Roads
 - Statewide Road Map
 - Properties (Parcels and Condos)
 - Condos
 - Property_poly_with_data layer
 - Parcel Boundaries
 - Buildings & Parking Lots
 - Building Footprints
 - Parking Lots & other Transportation
 - 1865 MC by Martenet and Bond
 - Agricultural Soils Map (MD Geo. Survey, Soils (1996))
 - Historic Preservation Information - Original
 - Aerials
 - Transportation & Utilities
 - Hydrologic Features



Table Of Contents

- Layers
 - Historic Preservation Information
 - Historic Preservation Information - New
 - Zoning - as amended
 - Lyttonsville Rosemary Hills Sector Plan
 - Master Plans - MARC Rail Communities
 - Master Plans - Westbard Sector Plan 201
 - WSSC Grids
 - Subdivisions
 - Boundaries - Zipcodes
 - Prince George's County Base Layers (200
 - Prince George's County Property
 - WOSG
 - MDP Property Maps
 - Property Points
 - Master Plan Highways
 - County Boundary
 - Montgomery County Zoning
 - Planning Areas
 - rdt_zones
 - Independent Municipalities Zoning
 - Boundaries - Zipcodes.lyr
 - planning2009
 - Rustic Roads
 - Statewide Road Map
 - Properties (Parcels and Condos)
 - Condos
 - Property_poly_with_data layer
 - Parcel Boundaries
 - Buildings & Parking Lots
 - Building Footprints
 - Parking Lots & other Transportation
 - 1865 MC by Martenet and Bond
 - Agricultural Soils Map (MD Geo. Survey,
 - Soils (1996)
 - Historic Preservation Information - Orig
 - Aerials
 - Transportation & Utilities
 - Hydrologic Features



Table Of Contents

- Layers
 - Historic Preservation Information
 - Historic Preservation Information - New
 - Zoning - as amended
 - Lyttonsville Rosemary Hills Sector Plan
 - Master Plans - MARC Rail Communities
 - Master Plans - Westbard Sector Plan 2011
 - WSSC Grids
 - Subdivisions
 - Boundaries - Zipcodes
 - Prince George's County Base Layers (2009)
 - Prince George's County Property
 - WOSG
 - MDP Property Maps
 - Property Points
 - Master Plan Highways
 - County Boundary
 - Montgomery County Zoning
 - Planning Areas
 - rdt_zones
 - Independent Municipalities Zoning
 - Boundaries - Zipcodes.lyr
 - planning2009
 - Rustic Roads
 - Statewide Road Map
 - Properties (Parcels and Condos)
 - Condos
 - Property_poly_with_data layer
 - Parcel Boundaries
 - Buildings & Parking Lots
 - Building Footprints
 - Parking Lots & other Transportation
 - 1865 MC by Martenet and Bond
 - Agricultural Soils Map (MD Geo. Survey, Soils (1996))
 - Historic Preservation Information - Original
 - Aerials
 - Transportation & Utilities
 - Hydrologic Features

