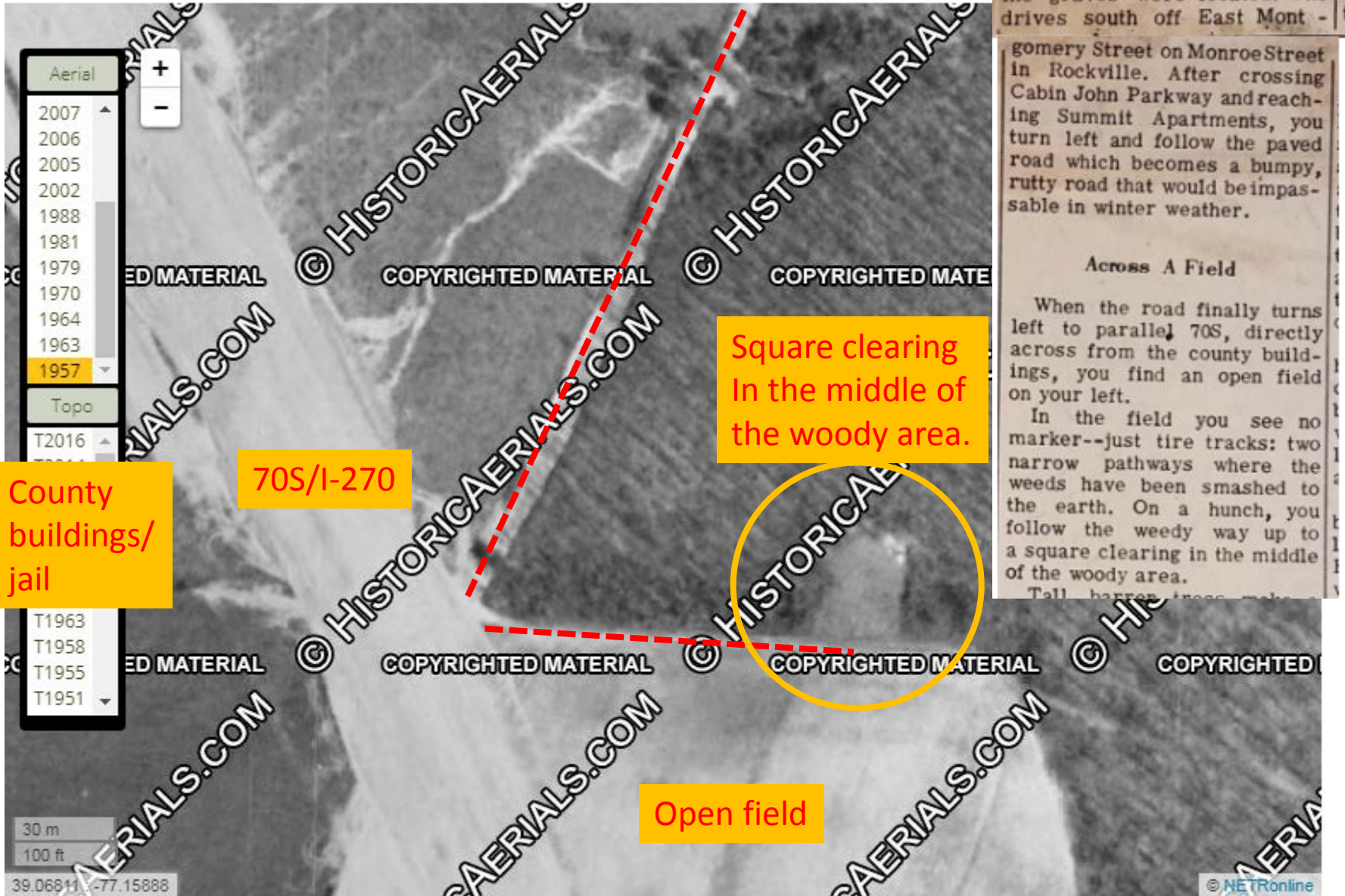


Monroe Street



King knew explicitly where the graves were located. One drives south off East Mont -

gomery Street on Monroe Street in Rockville. After crossing Cabin John Parkway and reaching Summit Apartments, you turn left and follow the paved road which becomes a bumpy, rutty road that would be impassable in winter weather.

Across A Field

When the road finally turns left to parallel 70S, directly across from the county buildings, you find an open field on your left.

In the field you see no marker--just tire tracks: two narrow pathways where the weeds have been smashed to the earth. On a hunch, you follow the weedy way up to a square clearing in the middle of the woody area.

Tall barren trees make

Square clearing
In the middle of
the woody area.

Open field

70S/I-270

County
buildings/
jail

Aerial
+
-

- 2007
- 2006
- 2005
- 2002
- 1988
- 1981
- 1979
- 1970
- 1964
- 1963
- 1957

Topo

T2016

- T1963
- T1958
- T1955
- T1951

30 m

100 ft

39.06811 -77.15886



- Aerial
- 2007
 - 2006
 - 2005
 - 2002
 - 1988
 - 1981
 - 1979
 - 1970
 - 1964
 - 1963**
 - 1957
- Topo
- T2016
 - T2014
 - T1986
 - T1984
 - T1979
 - T1972
 - T1966
 - T1963
 - T1958
 - T1955
 - T1951

30 m
100 ft
39.06822 -77.15932



- Aerial
- 2007
 - 2006
 - 2005
 - 2002
 - 1988
 - 1981
 - 1979
 - 1970
 - 1964
 - 1963
 - 1957
- Topo
- T2016
 - T2014
 - T1986
 - T1984
 - T1979
 - T1972
 - T1966
 - T1963
 - T1958
 - T1955
 - T1951

+
-

30 m
100 ft
39.06825 -77.15932

© NETOnline



- Aerial
- 2007
- 2006
- 2005
- 2002
- 1988
- 1981
- 1979
- 1970
- 1964
- 1963
- 1957
- Topo
- T2016
- T2014
- T1986
- T1984
- T1979
- T1972
- T1966
- T1963
- T1958
- T1955
- T1951

+
-

30 m
100 ft
39.06904, -77.15933

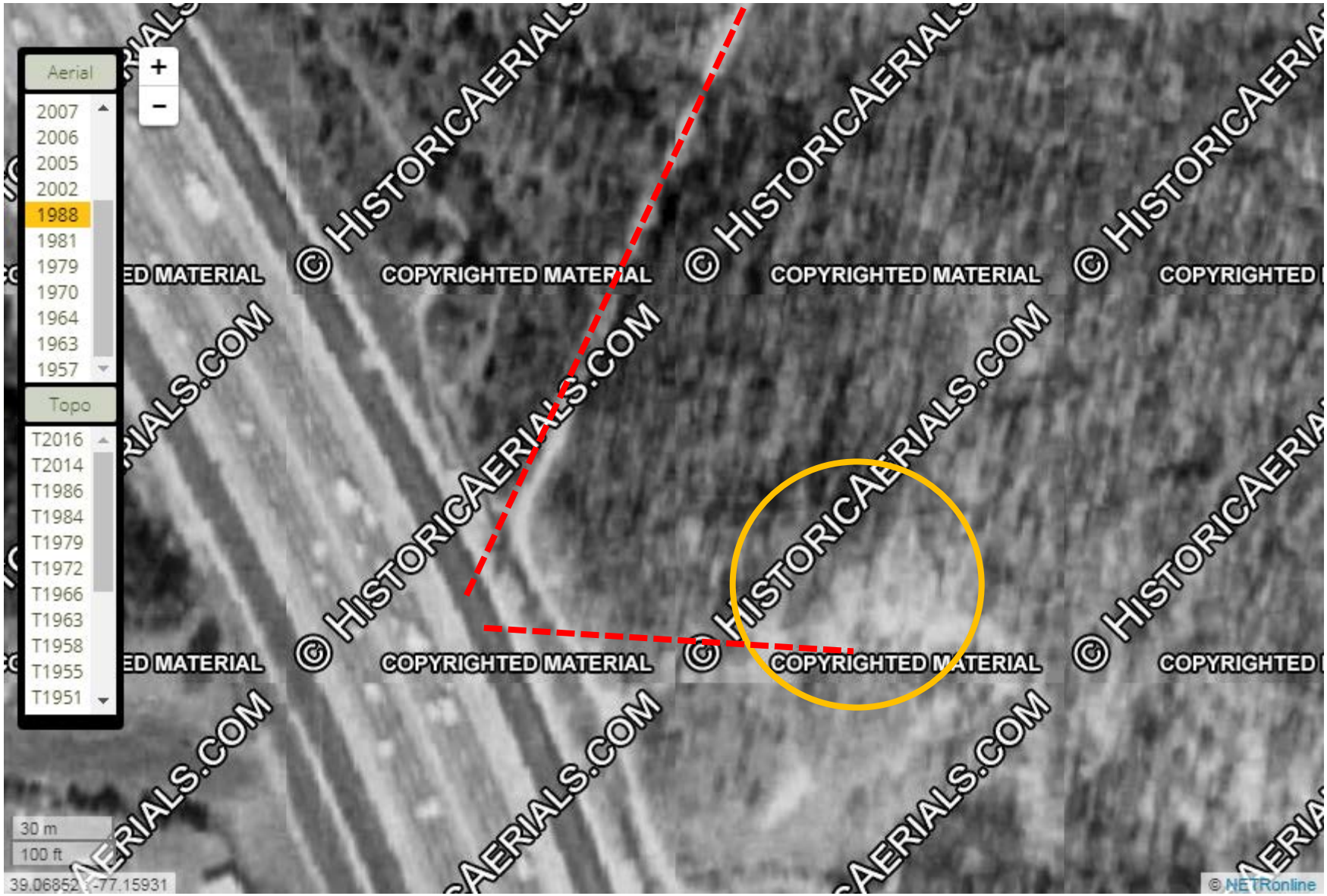


- Aerial
- 2007
 - 2006
 - 2005
 - 2002
 - 1988
 - 1981
 - 1979
 - 1970
 - 1964
 - 1963
 - 1957
- Topo
- T2016
 - T2014
 - T1986
 - T1984
 - T1979
 - T1972
 - T1966
 - T1963
 - T1958
 - T1955
 - T1951

+
-

30 m
100 ft
39.06831, -77.15934





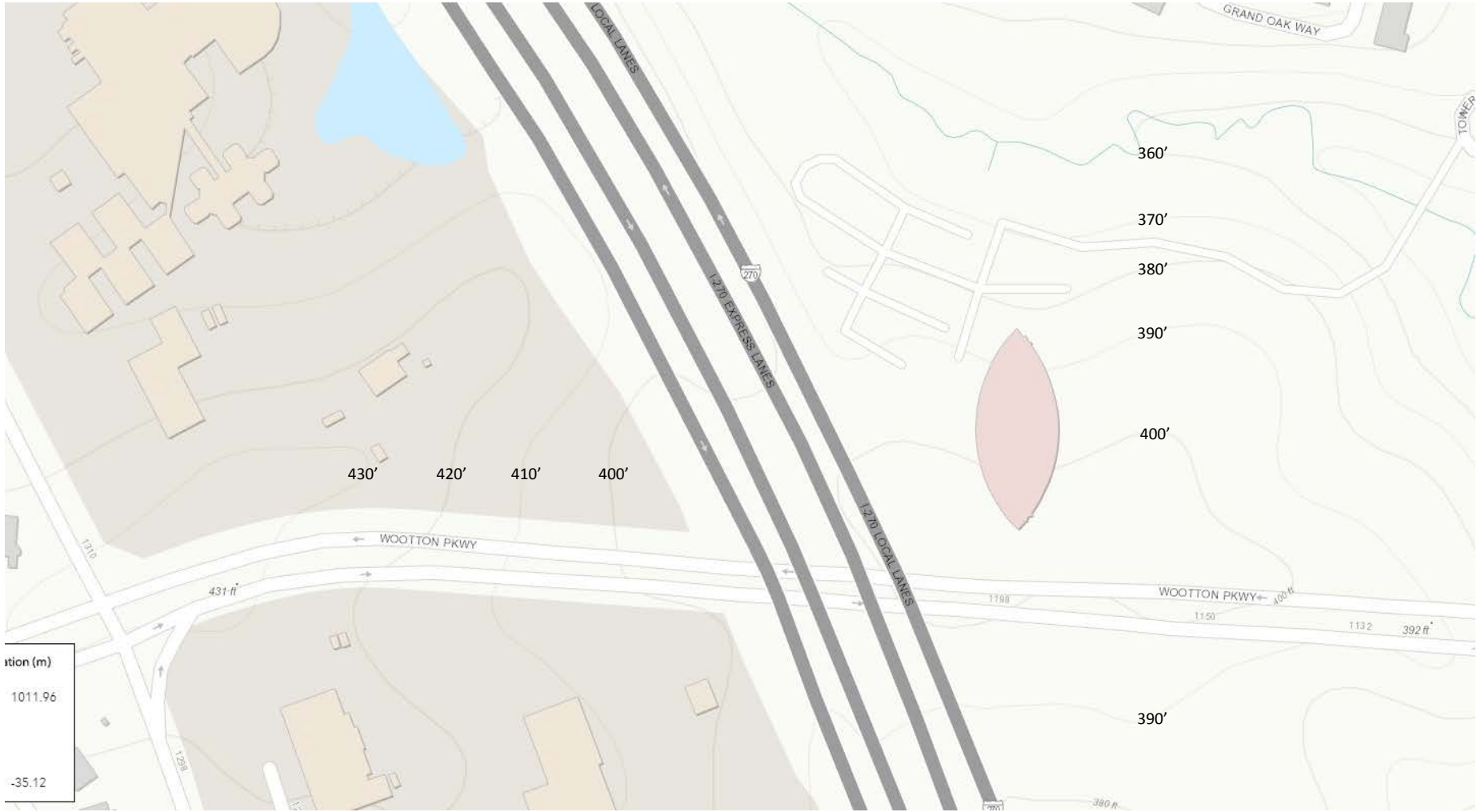
- Aerial
- 2007
- 2006
- 2005
- 2002
- 1988
- 1981
- 1979
- 1970
- 1964
- 1963
- 1957
- Topo
- T2016
- T2014
- T1986
- T1984
- T1979
- T1972
- T1966
- T1963
- T1958
- T1955
- T1951

+
-

30 m
100 ft
39.06852, -77.15931

Monroe Street





<https://geodata.md.gov/topoviewer/>