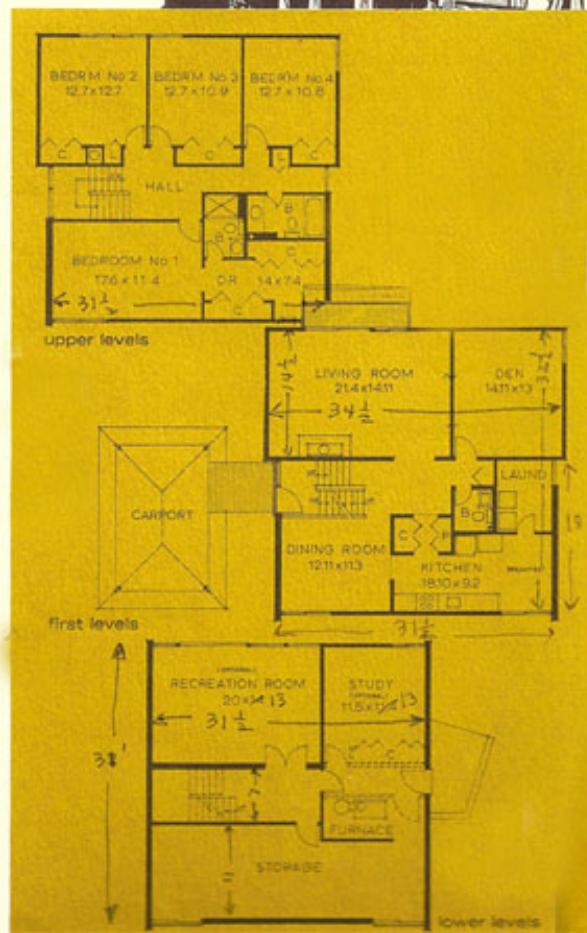




THE HILLTOP

A NEW GROUP OF CONTEMPORARY HOMES ON A WOODED HILLTOP... OVERLOOKING POTOMAC, MD.



THE TWO-STORY

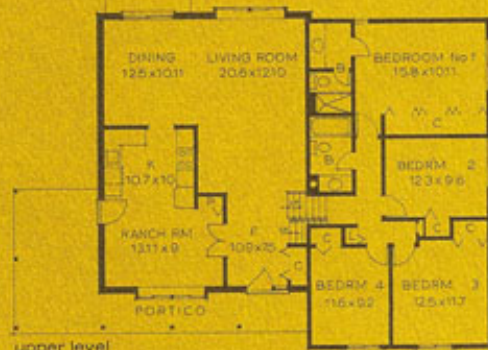
Both the mansard roof elevation on the cover of this brochure, and the shed pitched roof of the elevation above are available with the same basic floor plan. The home includes 4 bedrooms, private library, 2½ baths, breakfast room in the kitchen, laundry room off the kitchen, separate dining room, living room with fireplace, panelled recreation room with wood panelled ceiling if you wish, carport available, room for 5th bedroom, various decorative and ornamental patios and decks, a two-story high entry that literally suspends its stairwell in light and space.

The views are superb from any window of the home, and there is an extensive use of window walls to take advantage of this. Frequently, a finely designed contemporary home has too many exciting details to list, like roof lines, recesses, window placement, textures. Our two-story is a case in point.

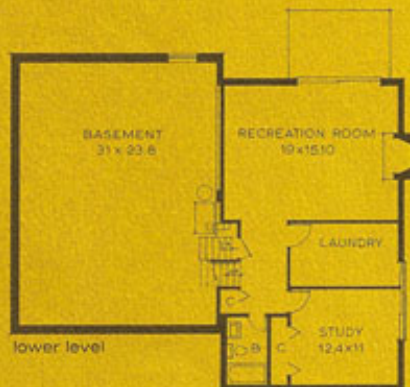
THE SPLIT LEVEL

This time-honored split level plan fits comfortably into contemporary design, and, to carry the concept further, fits even more comfortably into our heavily wooded lots. The combinations of lights and shadows, leaves and textures, are a beauty to the eye.

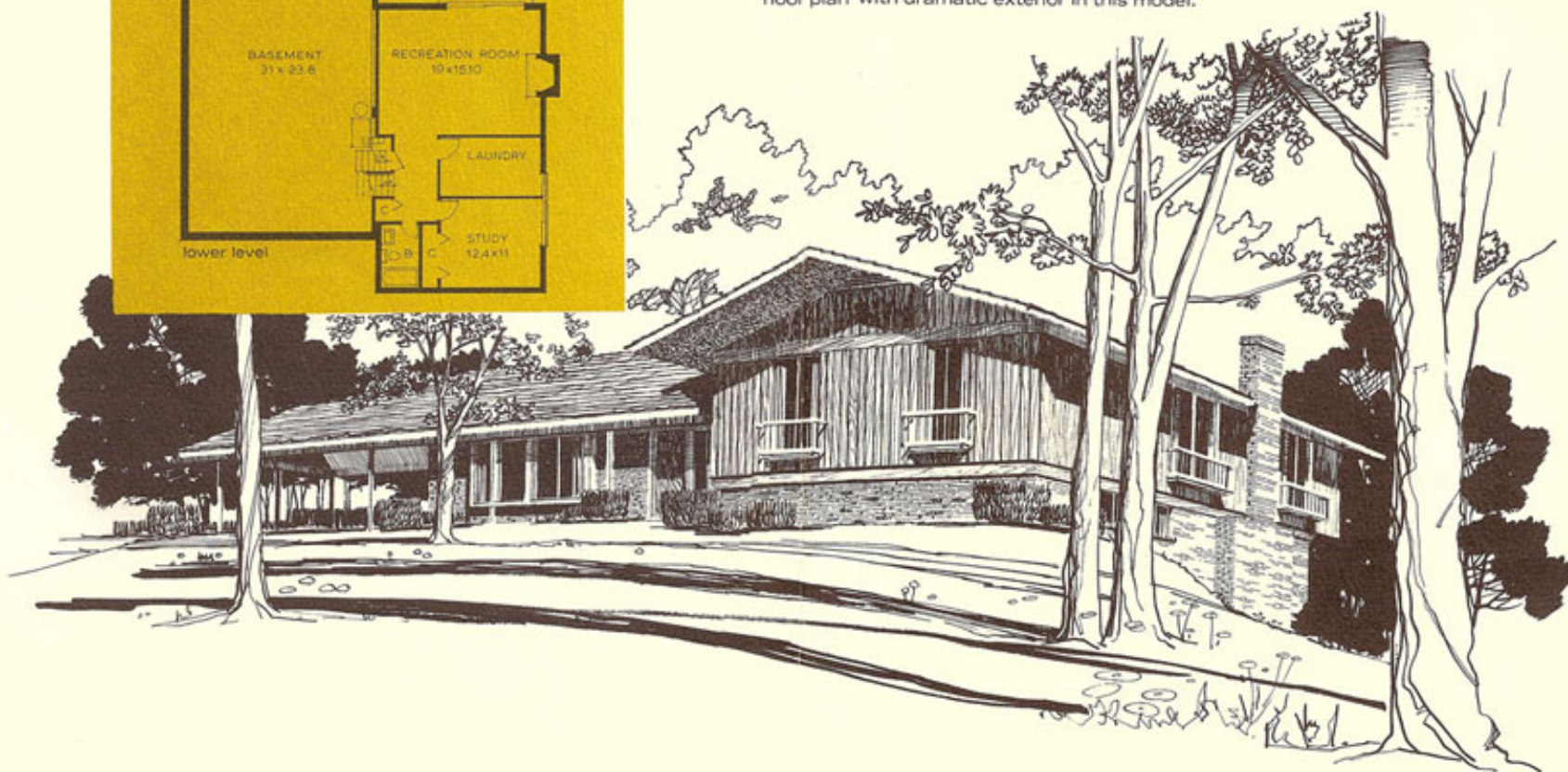
The split level includes a large entrance foyer, ranch room off the kitchen, dining room with deck, light-filled living room, four bedrooms and two baths on one level, separate dressing room in the master suite, large paneled recreation room with fireplace and patio, laundry room, room for a fifth bedroom or den, full basement, carport available, and of course, an exciting wooded setting. You will be particularly pleased with the happy marriage of comfortable floor plan with dramatic exterior in this model.



upper level

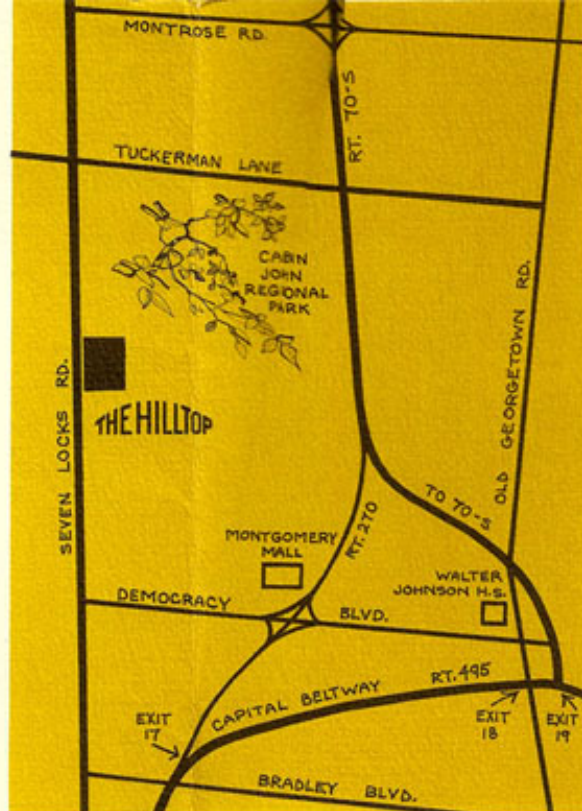


lower level



THE HILLTOP

The special setting for this community is a delightful hilltop, off Seven Locks Rd., overlooking Potomac, Cabin John Valley, and east to Bethesda. The houses have been turned to fit into their lots, set back in private cul-de-sacs, oriented to take in the best views, and professionally landscaped so that balconies, decks and patios vary with each grade. The site is so heavily wooded that it was a sore decision not to use photographs in this brochure, because the trees obscured the houses. The advantages of the Potomac location are known to all: a few minutes from 70-S and the Beltway, a few minutes from the new Montgomery Mall enclosed shopping center with Garfinckel's, Woodward & Lothrop, the Hecht Co., and Sears Roebuck, a few minutes from Walter Johnson High and Churchill High, and the fantastic Cabin John regional park. Without stopping to list every last detail, we ask you to note such points of quality as oak panelling, General Electric double door refrigerators, dishwashers and disposals, the special Instant-Hot cooking faucets, recessed ceiling lights, and sophisticated contemporary design features. Hilltop is a choice community, small enough to preserve its individuality, forward-looking enough to be a landmark tomorrow.



Directions: from the Beltway go north at Exit 18 on Old Georgetown Rd. to Democracy Blvd., west on Democracy Blvd. to Seven Locks Rd., north on Seven Locks Rd. to The Hilltop. From Bradley Blvd., take Seven Locks Rd. north to The Hilltop.

Model home phone: 299-7727

SALES: LANDGREEN REALTY CO., 762-7554
DEVELOPERS: STYLE-RITE BUILDERS
ARCHITECTS: COHEN, HAFT A.I.A., ASSOCIATES
LANDSCAPE ARCHITECT: THURMOND DONOVAN
ENGINEERS: MATZ, CHILDS & ASSOC.
BROCHURE DESIGN: MARVIN GERSTIN ADVERTISING
MODEL HOMES: BY URSELL'S OF GEORGETOWN

