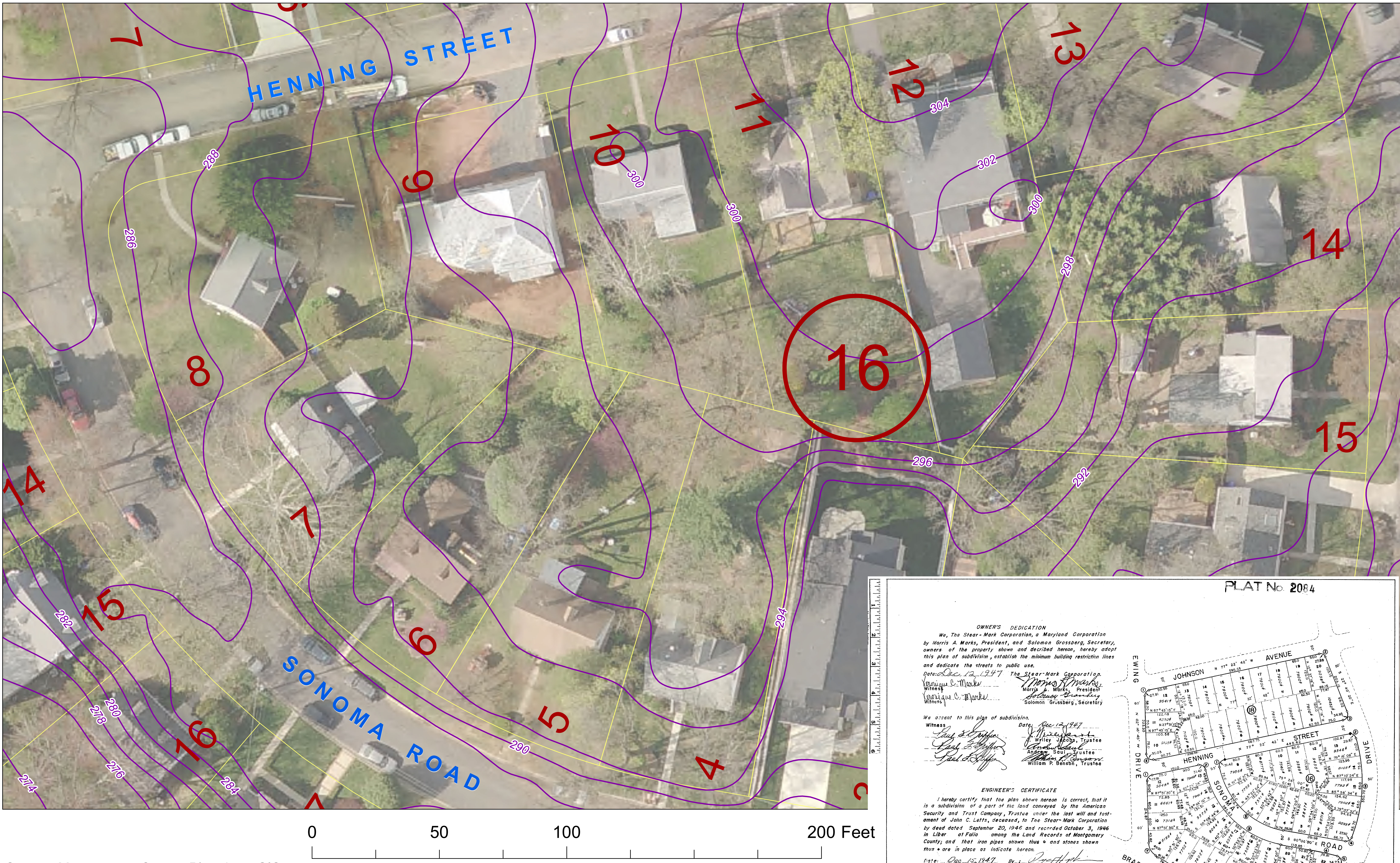
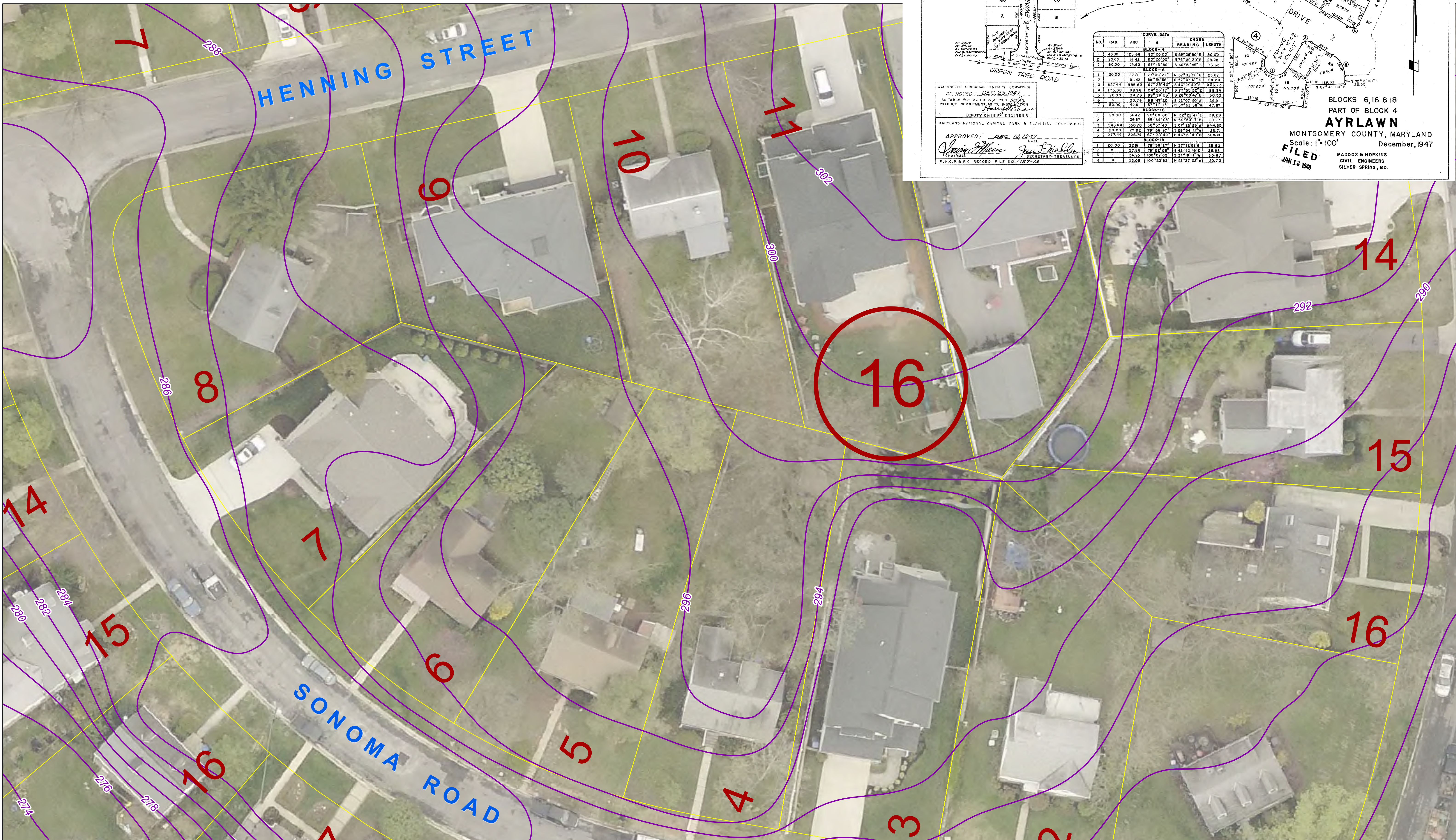


2008



2014



**PLAT No. 2084**

**OWNER'S DEDICATION**  
 We, The Stear-Mark Corporation, a Maryland Corporation  
 by Morris A. Marks, President, and Solomon Grossberg, Secretary,  
 owners of the property shown and described herein, hereby accept  
 this plan of subdivision, establish the minimum building restriction lines  
 and dedicate the streets to public use.  
 Witness: *Morris A. Marks*, President  
*Solomon Grossberg*, Secretary  
 Date: Dec. 12, 1947

**ENGINEER'S CERTIFICATE**  
 I hereby certify that the plan shown herein is correct, that it  
 is a subdivision of a part of the land covered by the American  
 Security and Trust Company, Trustee under the last will and test-  
 ament of John C. Latta, deceased, to The Stear-Mark Corporation  
 by deed dated September 20, 1946 and recorded October 3, 1946  
 in Liber of Falls among the Land Records of Montgomery  
 County, and that iron pipes shown thus  $\sigma$  and stones shown  
 thus  $\sigma$  are in place as indicated herein.  
 Date: Dec. 15, 1947. By: *Paul F. Hopkins*  
 Registered Land Surveyor No. 15885

**AYRLAWN**  
 BLOCKS 6, 16 & 18  
 PART OF BLOCK 4  
 MONTGOMERY COUNTY, MARYLAND  
 December, 1947  
 Scale: 1" = 100'  
 FILED  
 JUL 13 1948  
 MADDOX & HOPKINS  
 CIVIL ENGINEERS  
 SILVER SPRING, MD.

NO.	ARC	ANGLE	CHORD	BEARING	LENGTH
1	20.00	118.42	35.00	S 20° 00' 00" E	35.00
2	20.00	118.42	35.00	S 20° 00' 00" E	35.00
3	20.00	118.42	35.00	S 20° 00' 00" E	35.00
4	20.00	118.42	35.00	S 20° 00' 00" E	35.00
5	20.00	118.42	35.00	S 20° 00' 00" E	35.00
6	20.00	118.42	35.00	S 20° 00' 00" E	35.00
7	20.00	118.42	35.00	S 20° 00' 00" E	35.00
8	20.00	118.42	35.00	S 20° 00' 00" E	35.00
9	20.00	118.42	35.00	S 20° 00' 00" E	35.00
10	20.00	118.42	35.00	S 20° 00' 00" E	35.00
11	20.00	118.42	35.00	S 20° 00' 00" E	35.00
12	20.00	118.42	35.00	S 20° 00' 00" E	35.00
13	20.00	118.42	35.00	S 20° 00' 00" E	35.00
14	20.00	118.42	35.00	S 20° 00' 00" E	35.00
15	20.00	118.42	35.00	S 20° 00' 00" E	35.00
16	20.00	118.42	35.00	S 20° 00' 00" E	35.00