

NO.	RADIUS	ARC	DELTA	TAN	CHORD
1	1020.00'	53.25'	02° 50' 28"	28.83'	N 07° 42' 53" E - 53.24'
2	1020.00'	00.42'	04° 31' 02"	40.23'	N 11° 28' 00" E - 60.40'
3	1000.00'	100.20'	05° 47' 34"	54.00'	S 00° 07' 00" W - 100.20'
4	1020.00'	118.40'	06° 30' 02"	50.26'	S 17° 05' 12" W - 118.35'

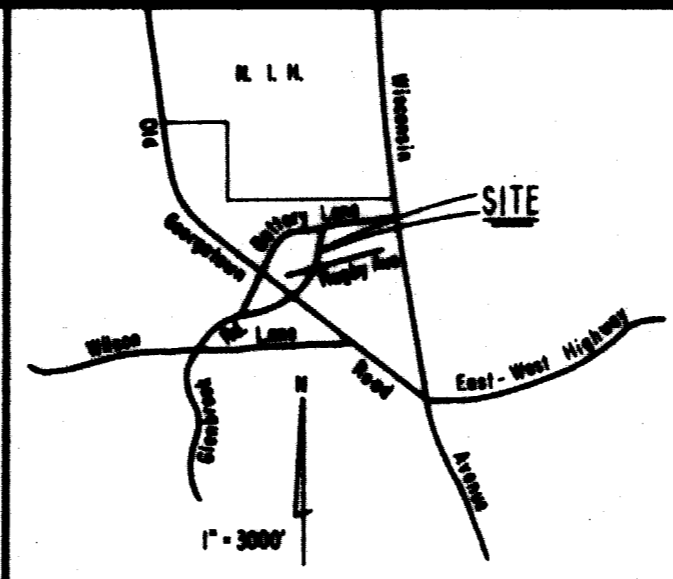
OWNERS DEDICATION

We, The Maryland-National Capital Park and Planning Commission, by Norman L. Christeller, Chairman, and A. Edward Navarre, Secretary-Treasurer, owners of the property shown and described hereon, hereby adopt this plan of subdivision and establish the minimum building restriction lines. There are no suits of action, leases, liens or trusts on the property included in this plan of subdivision.

Date August 7, 1982

Norman L. Christeller
Norman L. Christeller, Chairman

A. Edward Navarre
A. Edward Navarre, Secretary-Treasurer



VICINITY MAP

SURVEYOR'S CERTIFICATE

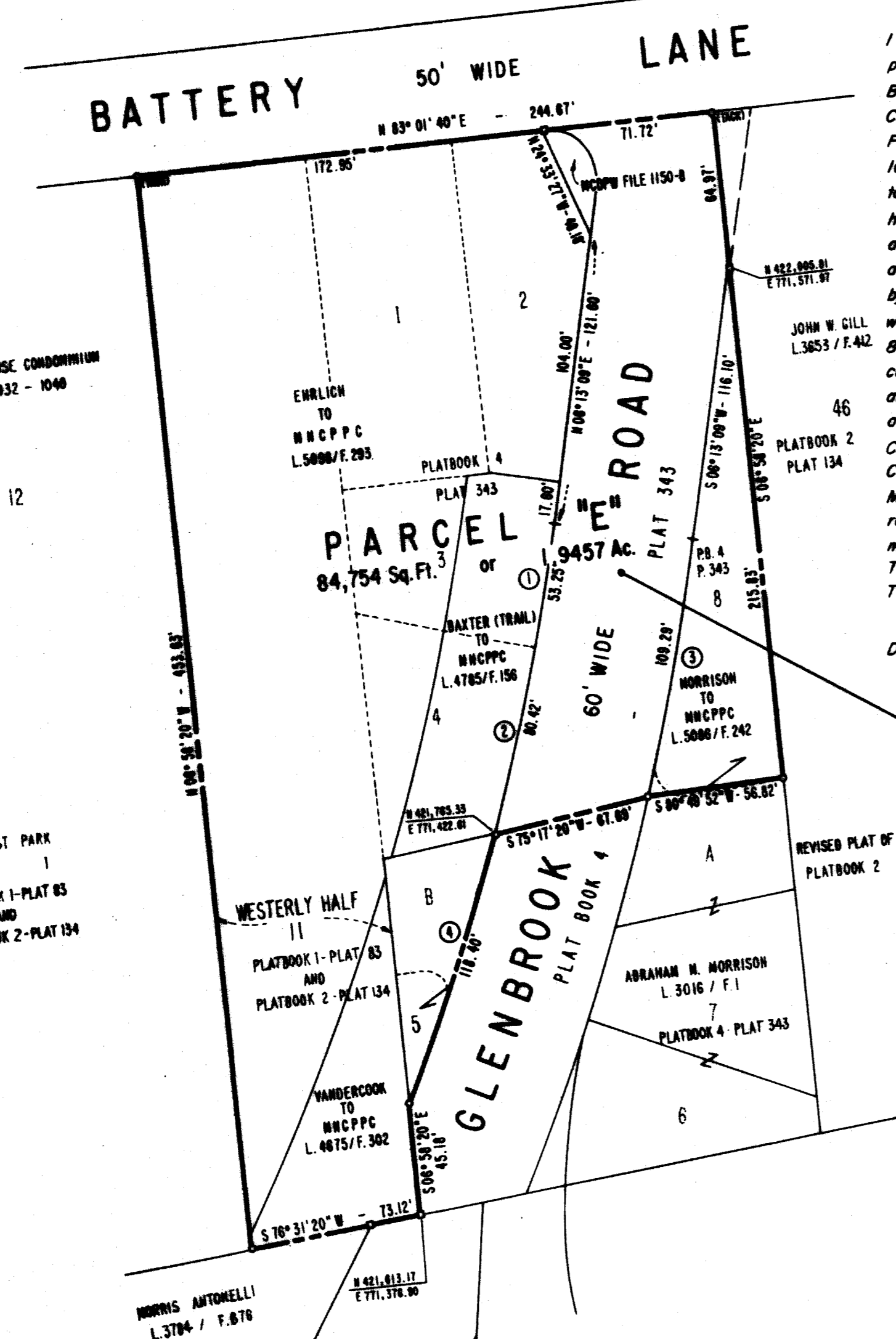
I hereby certify that the plan shown hereon is correct, that it is a resubdivision of 1) part of the westerly one-half of Lot No. 11, Block 1, "Northwest Park" as recorded in Plat Book 1 at Plat 83 and conveyed to The Maryland-National Capital Park and Planning Commission by Ara L. and Alvira S. Vandercook by deed recorded in Liber 4675 at Folio 302; 2) part of Lots 3 and 4 shown on the "Plat of Resubdivision of Parts of Lots 10 and 11, Block 1, Northwest Park" as recorded in Plat Book 4 at Plat 343 and conveyed to The Maryland-National Capital Park and Planning Commission by Mary Trail Baxter, heir to William P. Trail, by deed recorded in Liber 4785 at Folio 156; 3) Lots B, 5 and part of Lots A and 8 as shown on the above-mentioned plat recorded in Plat Book 4 at Plat 343 and conveyed to The Maryland-National Capital Park and Planning Commission by Abraham M. Morrison by deed recorded in Liber 5086 at Folio 242; 4) part of the westerly one-half of Lot 11, Block 1, "Northwest Park" as recorded in Plat Book 1 at Plat 83; and, Lot 1 and part of Lots 2, 3 and 4 shown on the above-mentioned plat recorded in Plat Book 4 at Plat 343 and conveyed to The Maryland-National Capital Park and Planning Commission by Bernard and Vera Ehrlich by deed recorded in Liber 5098 at Folio 293; and 5) part of Glenbrook Road (said part having been abandoned by County Council July 21, 1981 by Resolution No. 9-1401) as previously dedicated to Montgomery County, Maryland as Public Highway by plat recorded in Plat Book 4 at Plat 343 and Montgomery County Department of Public Works file 1150-B, all foregoing having been recorded among the Land Records of Montgomery County, Maryland; and that concrete monuments and iron pipes shown thus \odot and \circ , respectively, are in place where indicated. The area of street abandoned by this plat is 17,922 square feet or 0.4114 acre. The total area included in this plat of subdivision is 1.9457 acres.

Date: 8/7/1982

Glenn S. Hilliard
Glenn S. Hilliard, C.L.S. Md. Reg. No. 4717

GLENBROOK 60' WIDE ROAD

ABANDONED BY COUNTY COUNCIL RESOLUTION NO. 9-1401 ADOPTED JULY 21, 1981. AREA = 17,922 S.F. = 0.4114 AC.



**PARCEL "E"
NORTHWEST PARK**

THE MARYLAND-NATIONAL CAPITAL PARK AND PLANNING COMMISSION

BETHESDA (7th) ELECTION DISTRICT
MONTGOMERY COUNTY, MARYLAND
SCALE: 1" = 50'
JULY 1982

SCANNED

BATTERY LANE URBAN PARK

THE MARYLAND-NATIONAL CAPITAL PARK & PLANNING COMMISSION
MONTGOMERY COUNTY PLANNING BOARD

APPROVED: September 9, 1982

Norman L. Christeller
CHAIRMAN

A. Edward Navarre
SECRETARY-TREASURER

M.N.C.P.P.C. Record File No. 547-13

MONTGOMERY COUNTY, MARYLAND
DEPARTMENT OF TRANSPORTATION

APPROVED: 12/21/82

Donald P. Cihy
DIRECTOR

RECORDED: 1-25-83
PLAT BOOK: 120
PLAT NO.: 14144

283210NP48071020