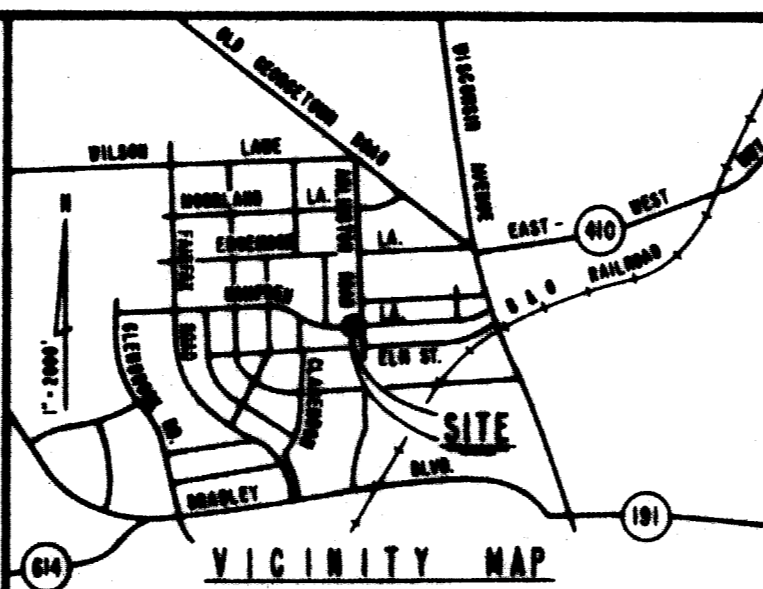


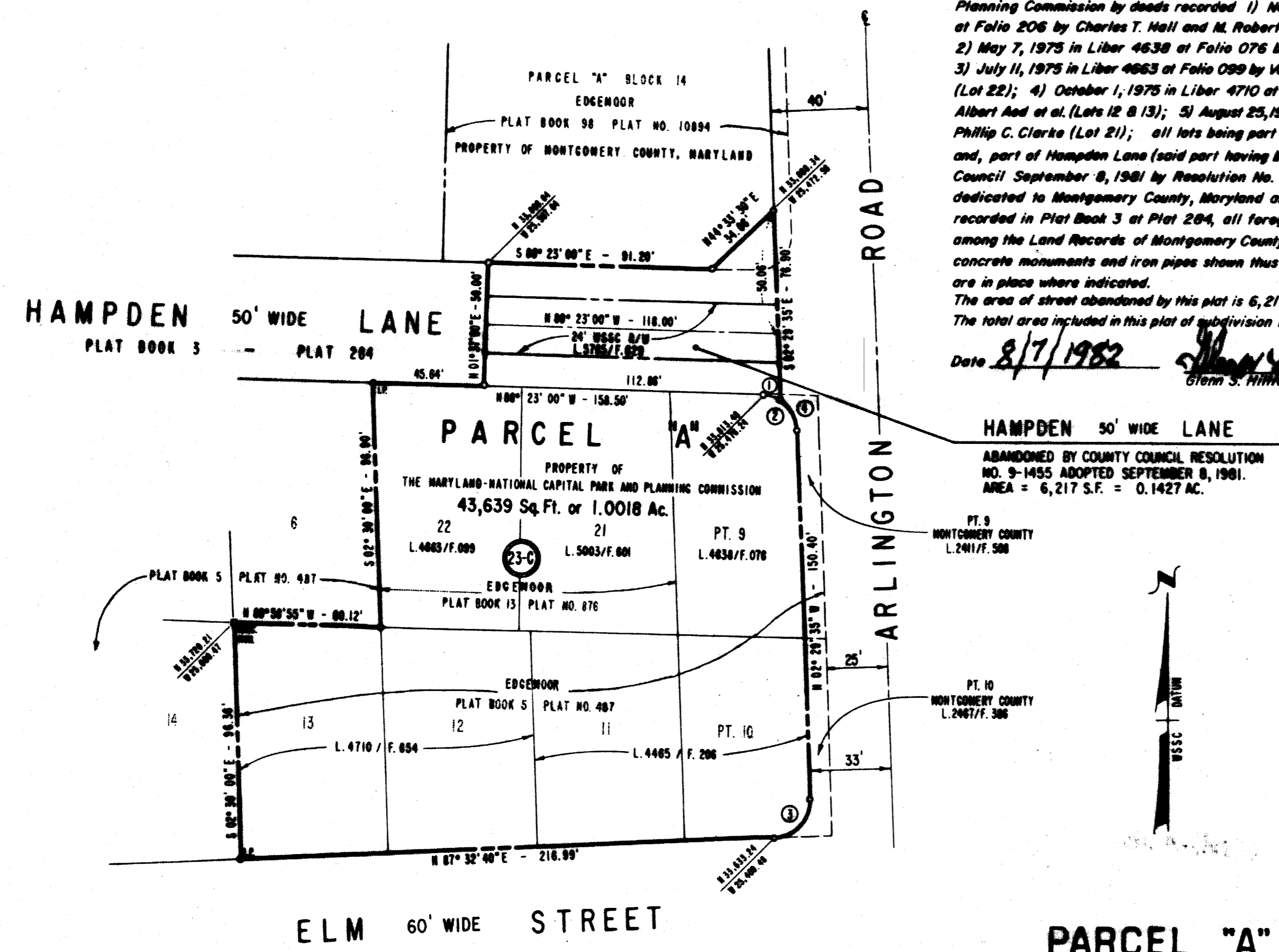
CURVE DATA				
NO.	RADIUS	ARC	DELTA	TAN. CHORD
1	15.00'	7.35'	28° 05' 42"	3.75'
2	15.00'	22.40'	80° 53' 25"	13.00'
3	15.00'	23.51'	80° 02' 15"	15.01'
4	15.00'	15.13'	57° 41' 45"	8.20'

OWNERS DEDICATION
 We, The Maryland-National Capital Park and Planning Commission, by Norman L. Christeller, Chairman, and A. Edward Navarro, Secretary-Treasurer, owners of the property shown and described hereon, hereby adopt this plan of subdivision and establish the minimum building restriction lines. There are no suits of action, leases, liens or trusts on the property included in this plan of subdivision.

Date AUGUST 7, 1982
Norman L. Christeller Chairman
A. Edward Navarro Secretary-Treasurer



SURVEYOR'S CERTIFICATE
 I hereby certify that the plan shown hereon is correct; that it is a plat of lots conveyed to The Maryland-National Capital Park and Planning Commission by deeds recorded 1) November 16, 1973 in Liber 4465 at Folio 206 by Charles T. Hall and M. Roberta Hall (Lots 11 & Pt. 10); 2) May 7, 1975 in Liber 4638 at Folio 076 by Thomas W. Conley (Lot Pt. 9); 3) July 11, 1975 in Liber 4663 at Folio 089 by Vera Belle Koth and Ernest R. Koth (Lot 22); 4) October 1, 1975 in Liber 4710 at Folio 654 by Joseph B. Porto and Albert Aed et al. (Lots 12 & 13); 5) August 25, 1977 in Liber 5003 at Folio 601 by Philip C. Clarke (Lot 21); all lots being part of Block 23-C "Edgemoor"; and, part of Hampden Lane (said part having been abandoned by County Council September 8, 1981 by Resolution No. 9-1453) as previously dedicated to Montgomery County, Maryland as Public Highway by plat recorded in Plat Book 3 at Plat 284, all foregoing having been recorded among the Land Records of Montgomery County, Maryland; and, that concrete monuments and iron pipes shown Mus. and O.P., respectively, are in place where indicated. The area of street abandoned by this plat is 6,217 square feet or 0.1427 acre. The total area included in this plat of subdivision is 1.0018 acres.
 Date 8/7/1982
Glenn S. Hilliard
 Glenn S. Hilliard, P.E.S. Md. Reg. No. 4717



HAMPDEN 50' WIDE LANE
 ABANDONED BY COUNTY COUNCIL RESOLUTION NO. 9-1455 ADOPTED SEPTEMBER 8, 1981.
 AREA = 6,217 S.F. = 0.1427 AC.



PARCEL "A"
BLOCK 23-C
EDGEMOOR

SCANNED

THE MARYLAND-NATIONAL CAPITAL PARK & PLANNING COMMISSION
 MONTGOMERY COUNTY PLANNING BOARD
 APPROVED: SEPTEMBER 9, 1982
Norman L. Christeller CHAIRMAN
A. Edward Navarro SECRETARY-TREASURER
 M.N.C.P.P.C. Record File No. 547-12

2-8221147002070 60
 MONTGOMERY COUNTY, MARYLAND
 DEPARTMENT OF TRANSPORTATION
 APPROVED: 12/21/82
 BY: *Glenn S. Hilliard*
 DIRECTOR
 RECORDED: 1-25-83
 PLAT BOOK: 120
 PLAT NO: 14143

THE MARYLAND-NATIONAL CAPITAL PARK AND PLANNING COMMISSION
 BETHESDA (7th) ELECTION DISTRICT
 MONTGOMERY COUNTY, MARYLAND
 SCALE: 1" = 40' JULY 1982
CAROLINE FREILAND URBAN PARK