

SURVEYOR'S CERTIFICATE

I hereby certify that the plan shown hereon is correct; that it is a resubdivision of lots conveyed to The Maryland-National Capital Park and Planning Commission by deeds dated:

- 1) August 1, 1973 in Liber 4420 at Folio 586 (Lot 3, Block L);
- 2) August 20, 1973 in Liber 4426 at Folio 202 (Lots 7 & 8, Block J);
- 3) December 11, 1973 in Liber 4474 at Folio 349 (Lot 2, Block L);
- 4) May 24, 1974 in Liber 4529 at Folio 695 (Lot 10, Block J);
- 5) July 7, 1975 in Liber 4663 at Folio 598 (Lots 6 & 13, Block J);
- 6) December 30, 1975 in Liber 4737 at Folio 706 (Lot 5, Block L);
- 7) June 8, 1976 in Liber 4794 at Folio 820 (Lot 11, Block J);
- 8) January 11, 1977 in Liber 4895 at Folio 432 (Lot 9, Block J);
- 9) August 12, 1977 in Liber 4998 at Folio 210 (Lot 12, Block J); and,
- 10) March 27, 1978 in Liber 5108 at Folio 540 (Lot 4, Block L),

all lots being part of "Section 8-B, Chevy Chase"; and part of Elm Street (said part having been abandoned by The Town of Chevy Chase Section 4 by Resolution dated July 9, 1980) as previously dedicated to Montgomery County, Maryland as Public Highway; all foregoing having been recorded July 29, 1926 in Plat Book 4 at Plat 336 among the Land Records of Montgomery County, Maryland; and that iron pipes shown thus: — are in place where indicated.

The area of street abandoned by this plat is 13,697 square feet or 0.3144 acre.

The total area included in this plat of subdivision is 90,634 square feet or 2.0807 acres.

Date: 11-18-83

Glenn S. Hilliard
Glenn S. Hilliard, R.L.S. Md. Reg. No. 4717

OWNER'S DEDICATION

We, The Maryland-National Capital Park and Planning Commission, by Norman L. Christeller, Chairman, and A. Edward Navarre, Secretary-Treasurer, owners of the property shown and described hereon, hereby adopt this plan of subdivision and establish the minimum building restriction lines. Existing utility rights-of-way and/or easements within the area of street abandonment shall be retained by Washington Suburban Sanitary Commission, Washington Gas Light Company, Potomac Electric Power Company and Chesapeake and Potomac Telephone Company of Maryland for the operation and maintenance of their respective utilities.

There are no suits of action, leases, liens or trusts on the property included in this plan of subdivision.

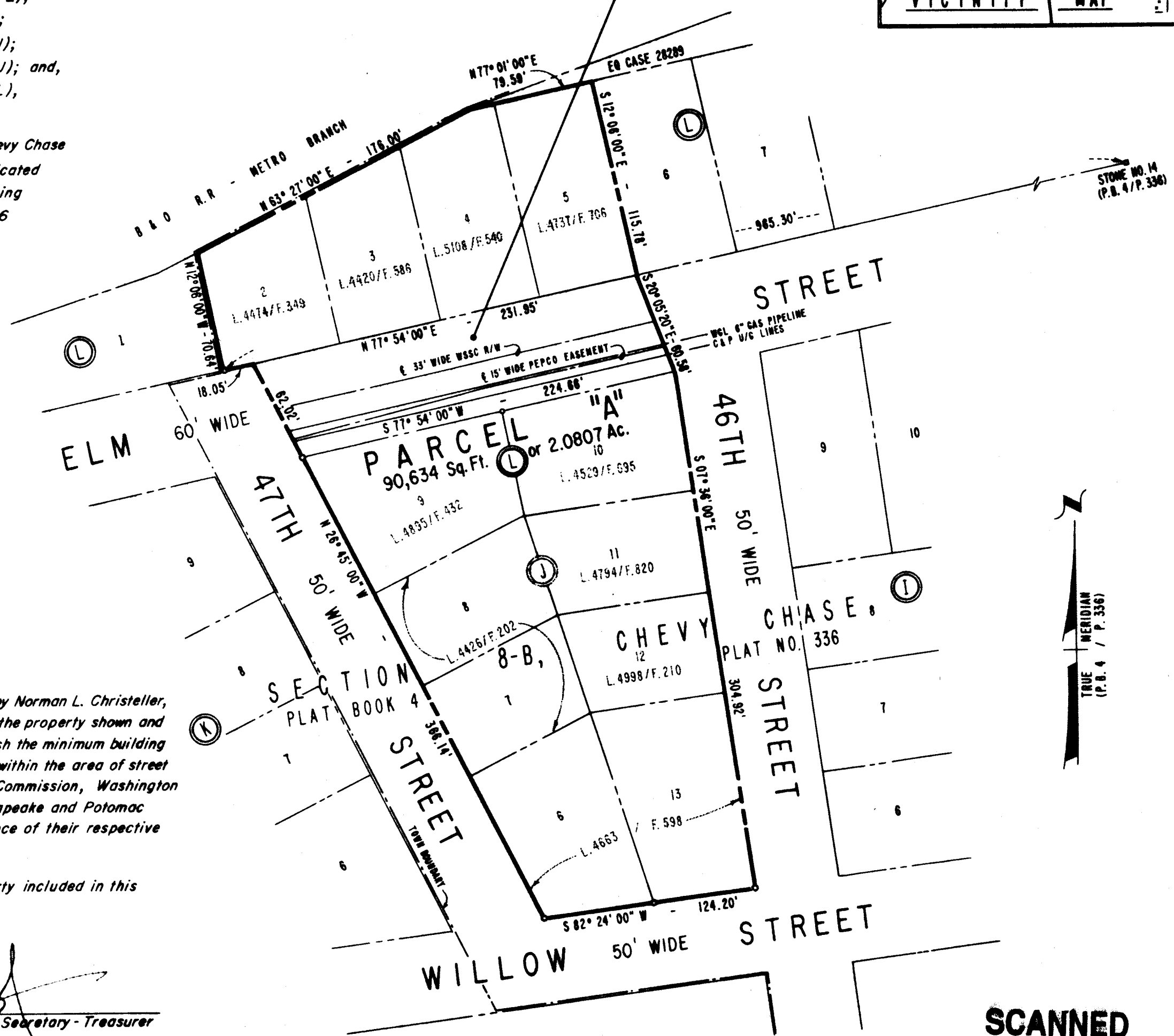
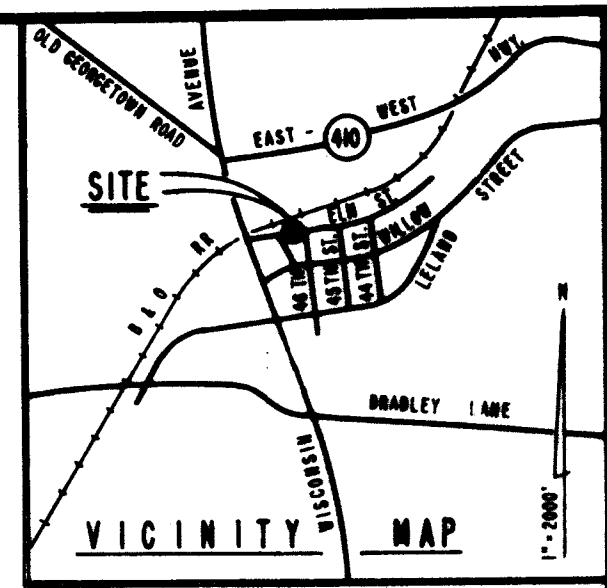
Date: DECEMBER 1, 1983

Norman L. Christeller
Norman L. Christeller, Chairman

A. Edward Navarre
A. Edward Navarre, Secretary-Treasurer

ELM 60' WIDE STREET

ABANDONED BY THE TOWN OF CHEVY CHASE SECTION 4 BY RESOLUTION DATED JULY 9, 1980.
AREA = 13,697 S.F. = 0.3144 AC.



SCANNED

PARCEL "A"
BLOCK L
SECTION 8-B, CHEVY CHASE

THE MARYLAND-NATIONAL CAPITAL PARK AND PLANNING COMMISSION

BETHESDA (7th) ELECTION DISTRICT
MONTGOMERY COUNTY, MARYLAND
SCALE: 1" = 60' NOVEMBER 1983

ELM STREET URBAN PARK

RECORDED: 4/12/84
PLAT BOOK: 126
PLAT NO.: 14721

By the recodation of this plat the area of Elm Street abandoned by The Town of Chevy Chase Sect. 4 and shown hereon is to be zoned R-60 in its entirety per Section 59-A-1.72 of the Montgomery County Zoning Ordinance.

TOWN OF CHEVY CHASE
APPROVED AS TO THE ABANDONMENT OF ELM STREET:
DATE: 5 MARCH 1984
William A. Waldman CHAIRMAN
Jane E. Lawton SECRETARY

THE MARYLAND-NATIONAL CAPITAL PARK & PLANNING COMMISSION
MONTGOMERY COUNTY PLANNING BOARD
APPROVED: DECEMBER 1, 1983
Norman L. Christeller CHAIRMAN
A. Edward Navarre SECRETARY-TREASURER
M.N.C.P.P.C. Record File No. 552-30