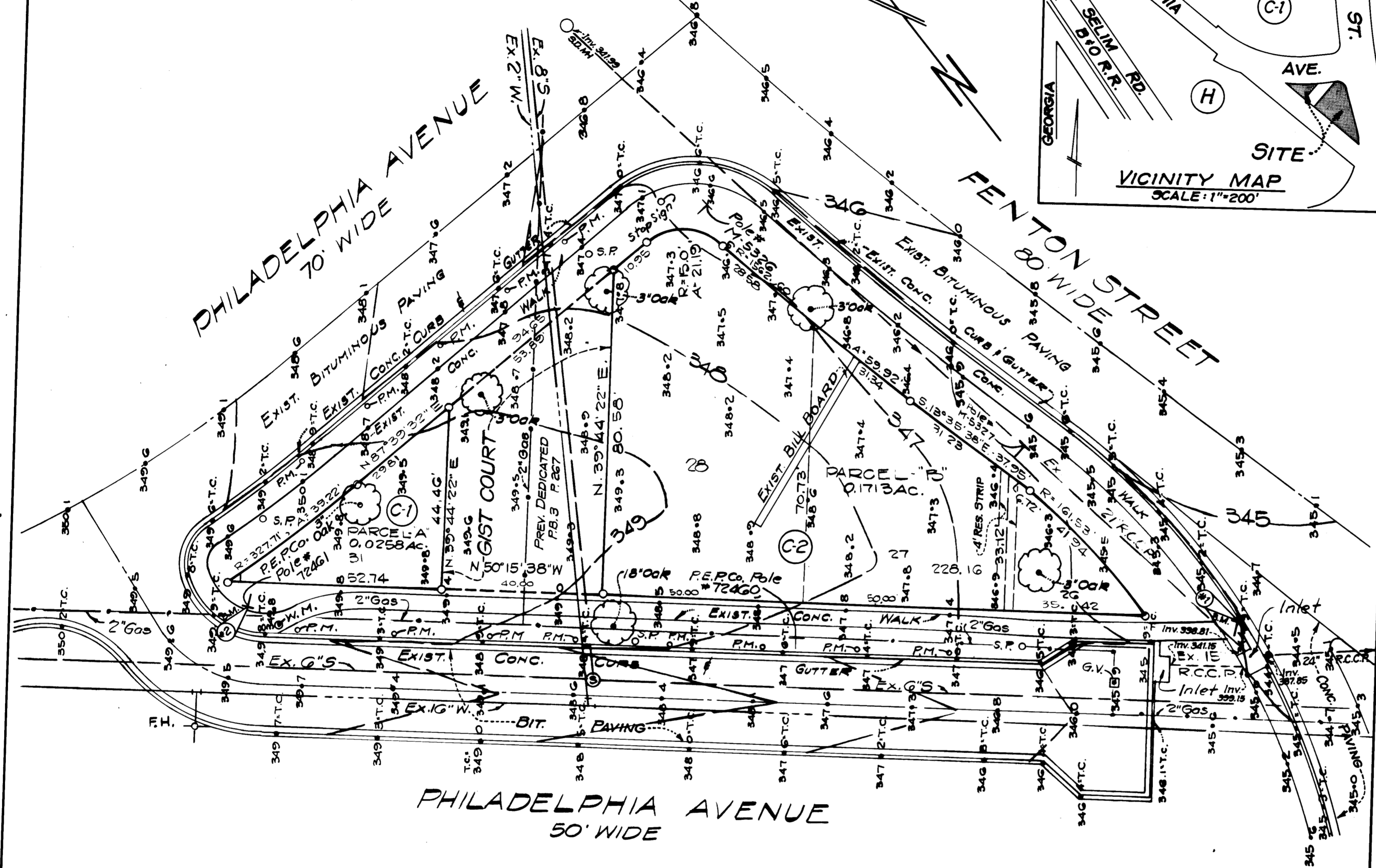
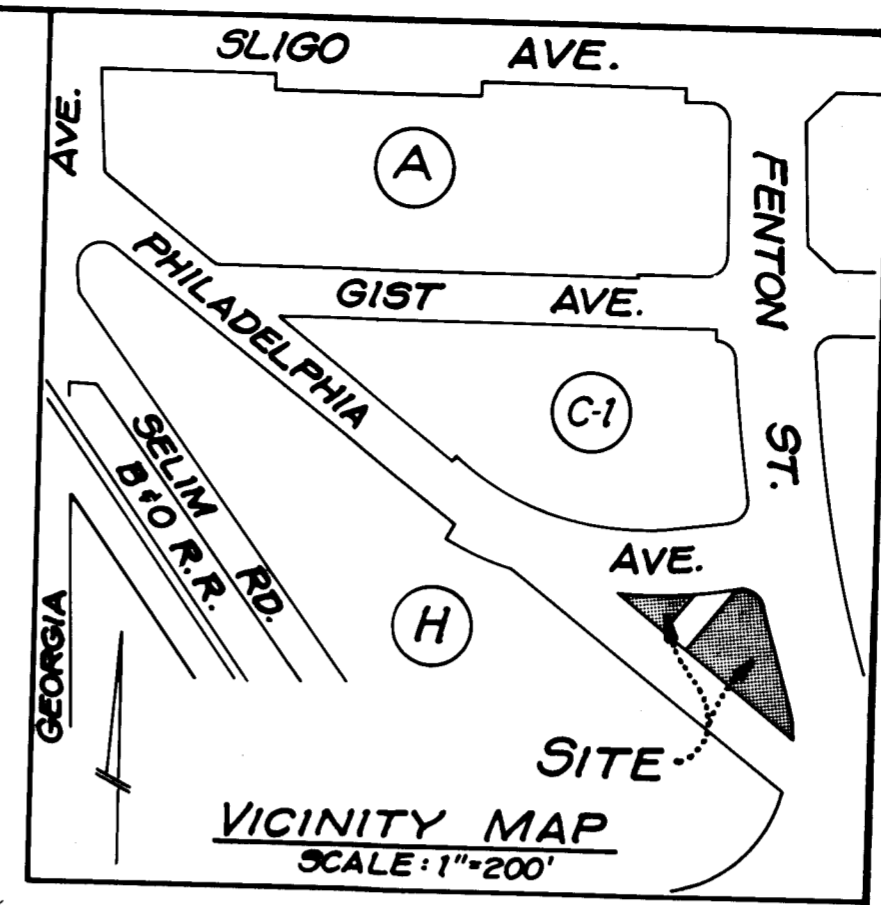


BENCH MARKS

B.M. #1 - Nail & washer in E. side of Pepco pole No 72459
 on W. side of Fenton St., 200'± S. of new inter-
 section of Philadelphia Ave. Elev. = 345.18

B.M. #2 - Nail & washer in E. side of Pepco pole No 72461
 on the S. side of new Philadelphia Ave., 200'±
 W. of Fenton St. Elev. = 350.53



SCANNED

- LEGEND**
- P.M. - Parking Meter
 - S.P. - Sign Post
 - W.M. - Water Meter
 - G.V. - Gas Valve

TOPOGRAPHIC SURVEY, PARCELS "A" & "B"
FENTON STREET-URBAN PARK
 GEORGE KLEIN PROPERTY
 WHEATON ELECTION DISTRICT No. 13
 MONTGOMERY COUNTY, MARYLAND
 SCALE: 1"=20', C.I.=2', MARCH, 1977
 PREPARED BY
 HOFFMAN & HUBBARD, INC.
 ENGINEERS & SURVEYORS
 6419 BALTIMORE AVE.
 RIVERDALE, MARYLAND