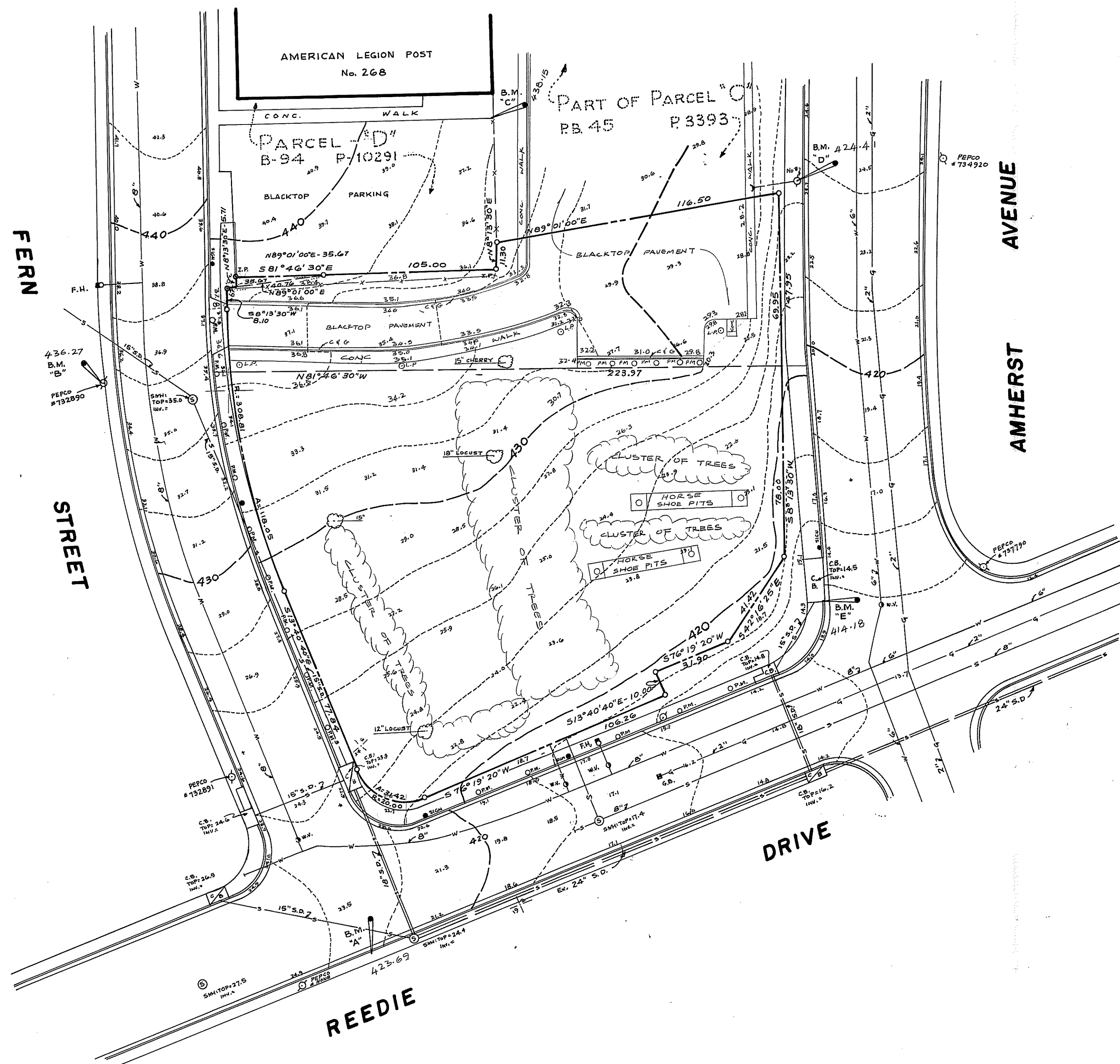


VICINITY MAP
No SCALE



- BENCH MARK "A"** - Elev. 423.62
□ CUT IN CONC. WALK - SOUTH SIDE INTERSECTION FERN ST. & REEDIE DR.
- BENCH MARK "B"** - Elev. 436.27
NAIL & WASHER - NORTHEAST SIDE PEPCO POLE # 732890 LOCATED WEST SIDE OF FERN STREET 200'± NORTH OF REEDIE DRIVE.
- BENCH MARK "C"** - Elev. 438.15
□ CUT IN CONC. WALK (SOUTHEAST CORNER) LOCATED SOUTH SIDE OF AMERICAN LEGION BLDG.
- BENCH MARK "D"** - Elev. 424.41
NAIL & WASHER - EAST SIDE OF PEPCO POLE # NONE LOCATED WEST SIDE AMHERST AVE., 200'± NORTH OF REEDIE DRIVE.
- BENCH MARK "E"** - Elev. 414.18
□ CUT IN SOUTHEAST CORNER OF CATCH BASIN TOP LOCATED NORTHWEST CORNER OF AMHERST AVENUE & REEDIE DRIVE

APPROX. AC. .94

SCANNED

TOPOGRAPHIC SURVEY WHEATON VETERANS PARK

WHEATON (13TH) ELECTION DISTRICT

MONTGOMERY COUNTY, MARYLAND

SCALE: 1"=30'

JUNE, 1978

REVISED DEC. 1987

Frey, Sheehan, Stoker & Assoc., Inc.
Land Planning Consultants
919 Gist Ave. Silver Spring, MD 20910
(301) 588-3110