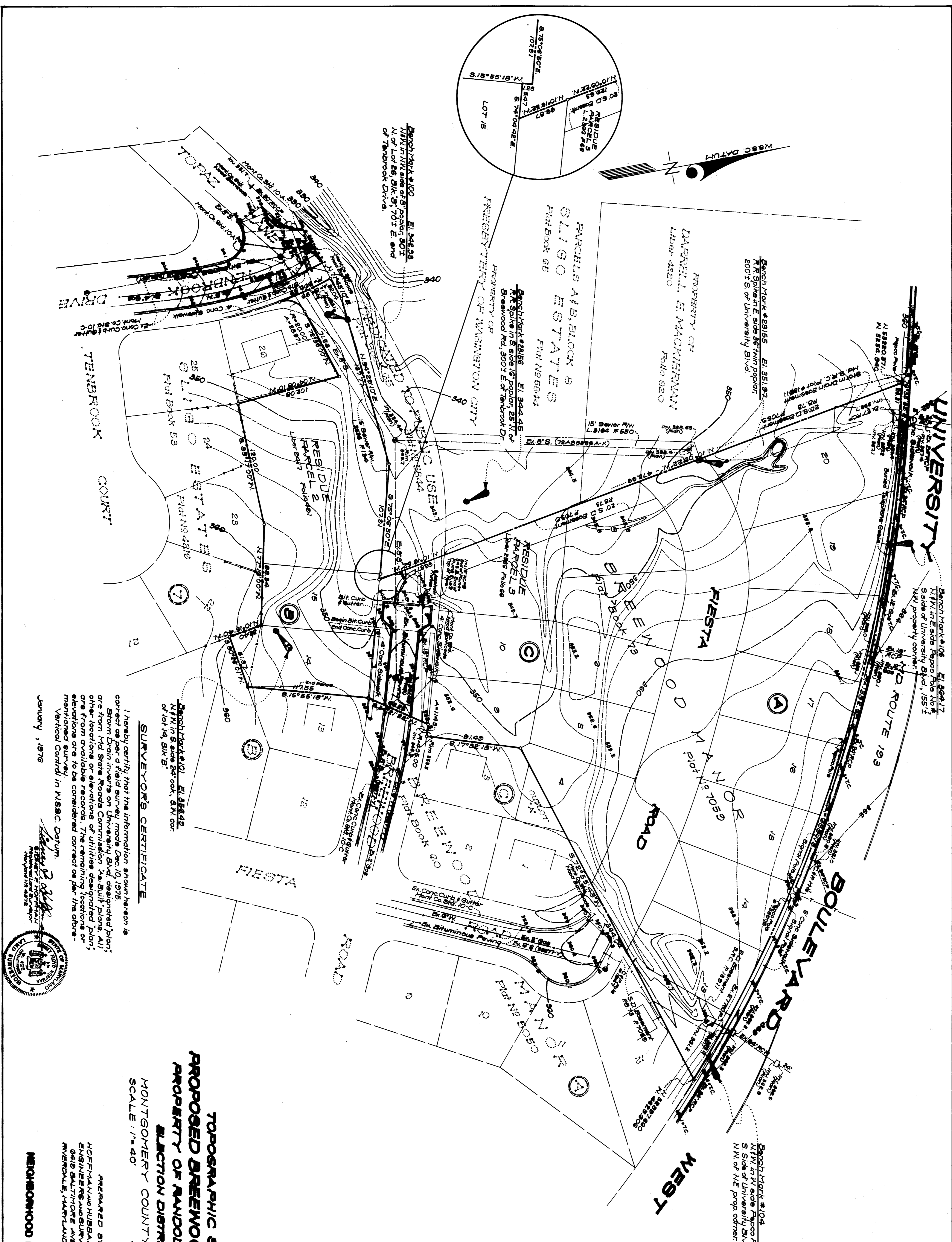


VICINITY MAP
SCALE: 1" = 5,000'



**TOPOGRAPHIC SURVEY
PROPOSED BREEWOOD LOCAL PARK
PROPERTY OF RANDOLPH HILLS, INC.
ELECTION DISTRICT N18
MONTGOMERY COUNTY, MARYLAND
SCALE: 1" = 40'**

PREPARED BY
HOFFMAN & HUBBARD, INC.
ENGINEERS AND SURVEYORS
6415 BALTIMORE AVENUE
BETHESDA, MARYLAND 20814

SCANNED

SURVEYOR'S CERTIFICATE

I hereby certify that the information shown hereon is correct as per a field survey made Dec. 10, 1975. Storm Drain inverts on University Blvd. designated plan; or from Md. State Roads Commission As-Built plans. All other locations or elevations of utilities designated plan, are from available records. The remaining locations or elevations are to be considered correct as per the above. Vertical Control in MS&C Datum.
January, 1976

