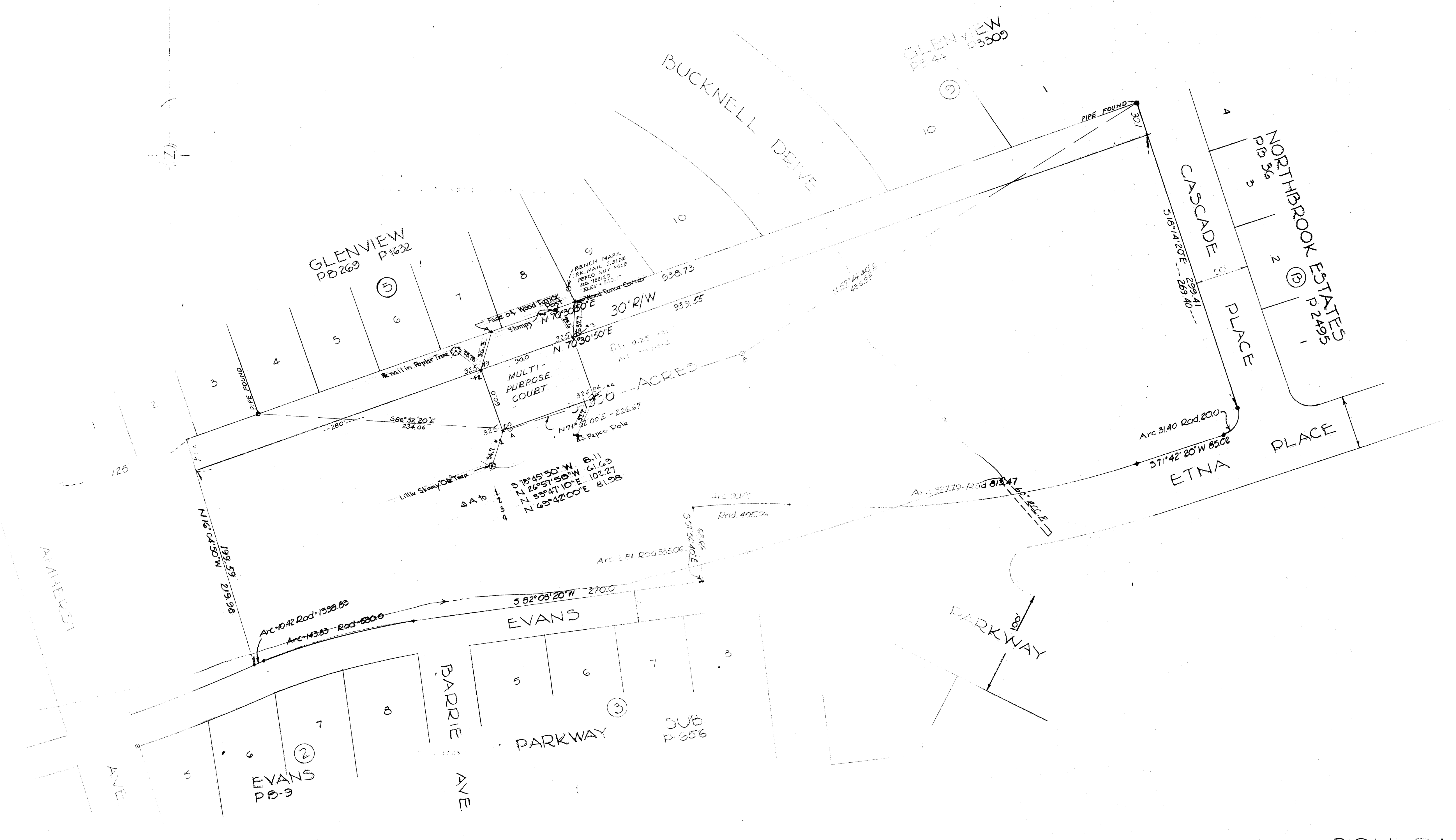


BENCH MARKS
 T.P.#2 - R.R. SPIKE IN W. SIDE PEPCO POLE
 #133109 @ S.E. SIDE CASCADE PL
 & DUNKIRK DR. ELEV. = 334.20
 T.P.#3 - R.R. SPIKE IN E. SIDE PEPCO GUY POLE
 #125122 @ N.W. COR. INT. BUCKNELL DRIVE
 & CASCADE RD. ELEV. = 325.30



BENCH MARK
 NEW N. SIDE PEPICO POLE # 125150
 @ S.E. CORNER AMHERST AVE. &
 EVANS PARKWAY. ELEV. = 328.22.

BOUNDARY SURVEY
 EVANS PARKWAY

NEIGHBORHOOD PARK

PRINT @ 10