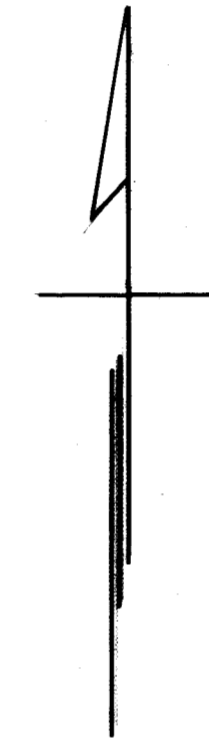
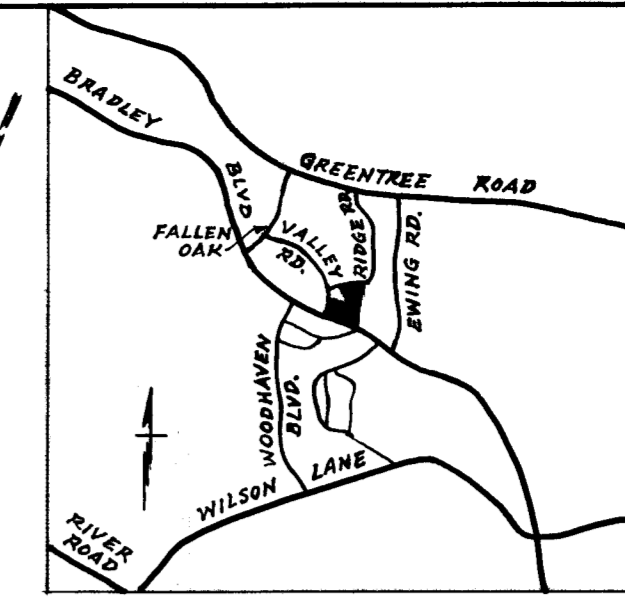
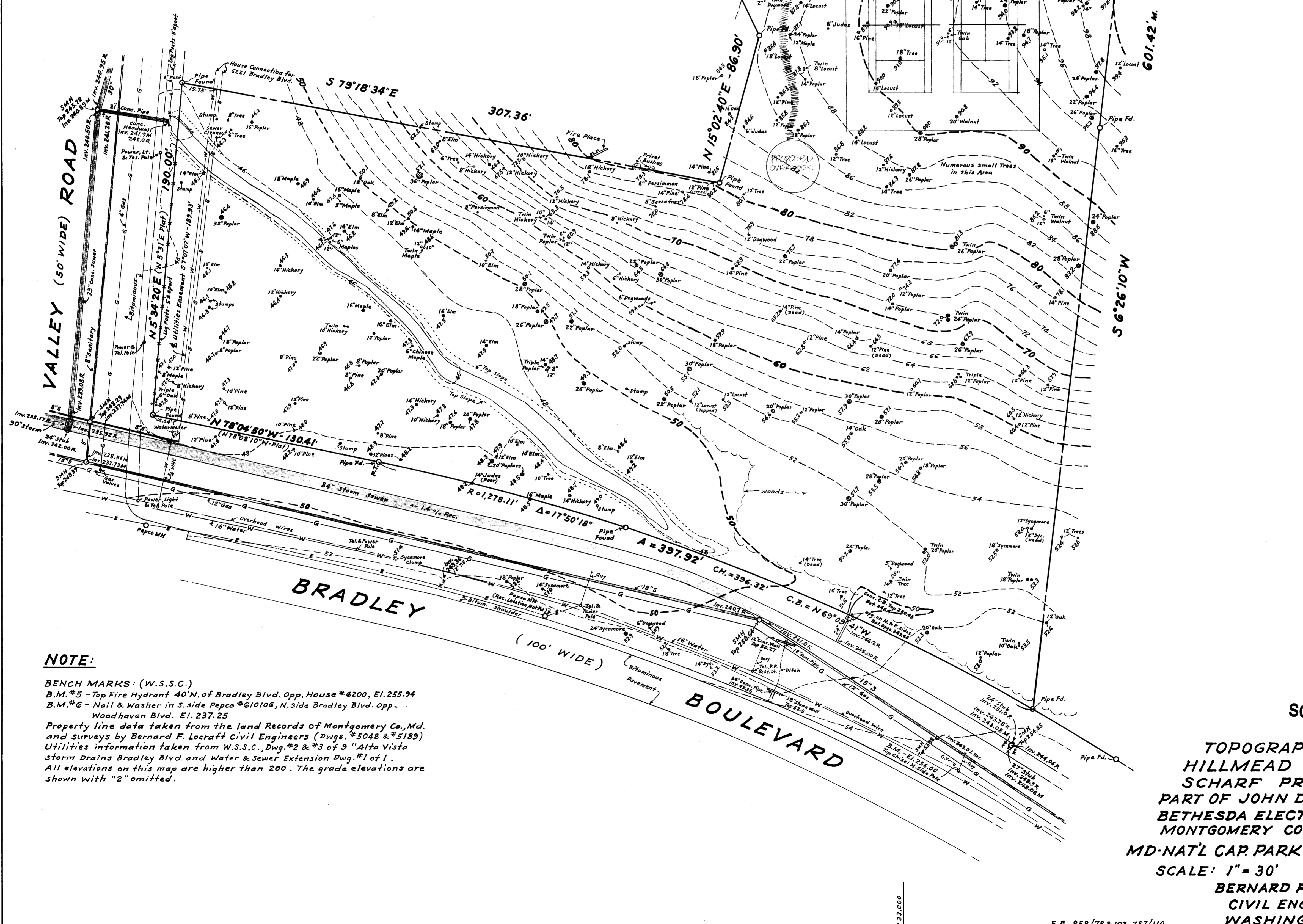


N 39,000



NOTE:
 BENCH MARKS: (W.S.S.C.)
 B.M. #5 - Top Fire Hydrant 40' N. of Bradley Blvd. Opp. House #620, El. 255.94
 B.M. #6 - Nail & Washer in S. side Pepco #610106, N. Side Bradley Blvd. Opp. Woodhaven Blvd. El. 237.25
 Property line data taken from the land records of Montgomery Co., Md. and surveys by Bernard F. Locraft Civil Engineers (Dwgs. #5048 & #5189)
 Utilities information taken from W.S.S.C., Dwg. #2 & #3 of 9 "Arlis Vista storm drains Bradley Blvd. and Water & Sewer Extension Dwg. #1 of 1.
 All elevations on this map are higher than 200'. The grade elevations are shown with "2" omitted.

SCANNED
 TOPOGRAPHIC MAP
 HILLMEAD LOCAL PARK
 SCHARF PROPERTY AND
 PART OF JOHN D. GREEN ESTATE
 BETHESDA ELECTION DISTRICT NO. 7
 MONTGOMERY COUNTY, MARYLAND
 MD-NAT'L CAP. PARK & PLANNING COMM.
 SCALE: 1" = 30' MAY 5, 1975
 BERNARD F. LOCRAFT
 CIVIL ENGINEERS
 WASHINGTON, D.C.