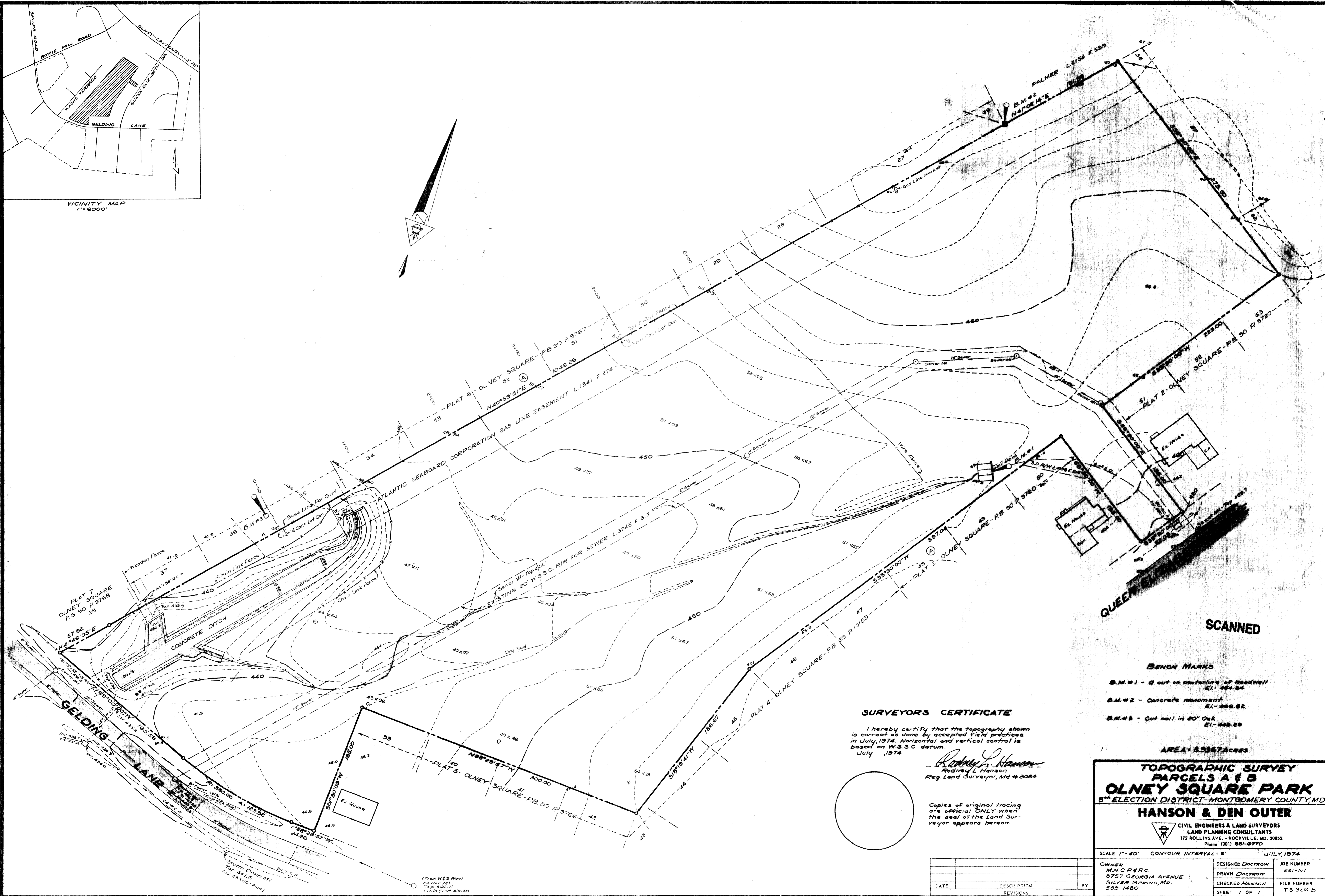
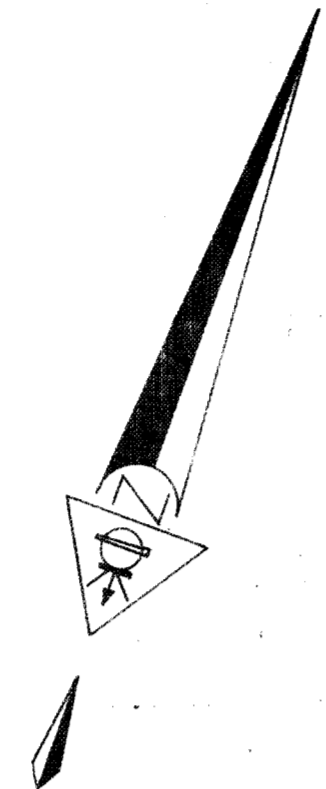


VICINITY MAP  
1"=6000'



SCANNED

**BENCH MARKS**

- B.M.#1 - B cut on surface of roadwell  
Elev. 484.84
- B.M.#2 - Concrete monument  
Elev. 486.82
- B.M.#3 - Cut nail in 20" Oak  
Elev. 488.80

AREA = 8.5367 Acres

**SURVEYORS CERTIFICATE**

I hereby certify that the topography shown is correct as done by accepted field practices in July, 1974. Horizontal and vertical control is based on W.S.S.C. datum.  
July, 1974

*Rodney L. Hanson*  
Rodney L. Hanson  
Reg. Land Surveyor, Md. # 3084

Copies of original tracing are official ONLY when the seal of the Land Surveyor appears hereon.

**TOPOGRAPHIC SURVEY  
PARCELS A & B  
OLNEY SQUARE PARK  
8<sup>TH</sup> ELECTION DISTRICT - MONTGOMERY COUNTY, M.D.**

**HANSON & DEN OUTER**  
CIVIL ENGINEERS & LAND SURVEYORS  
LAND PLANNING CONSULTANTS  
172 ROLLINS AVE. - ROCKVILLE, MD. 20852  
Phone (301) 881-6770

SCALE 1"=40' CONTOUR INTERVAL = 2' JULY, 1974

OWNER: M.N.C. P.E.P.C. 8757 GEORGIA AVENUE SILVER SPRING, MD. 585-1480	DESIGNED DOCTROW DRAWN DOCTROW CHECKED HANSON	JOB NUMBER 221-NI FILE NUMBER T.S. 326 B
--	---	---

DATE \_\_\_\_\_ DESCRIPTION \_\_\_\_\_ BY \_\_\_\_\_