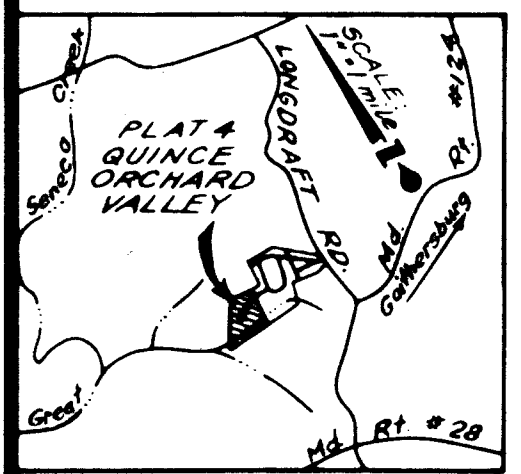
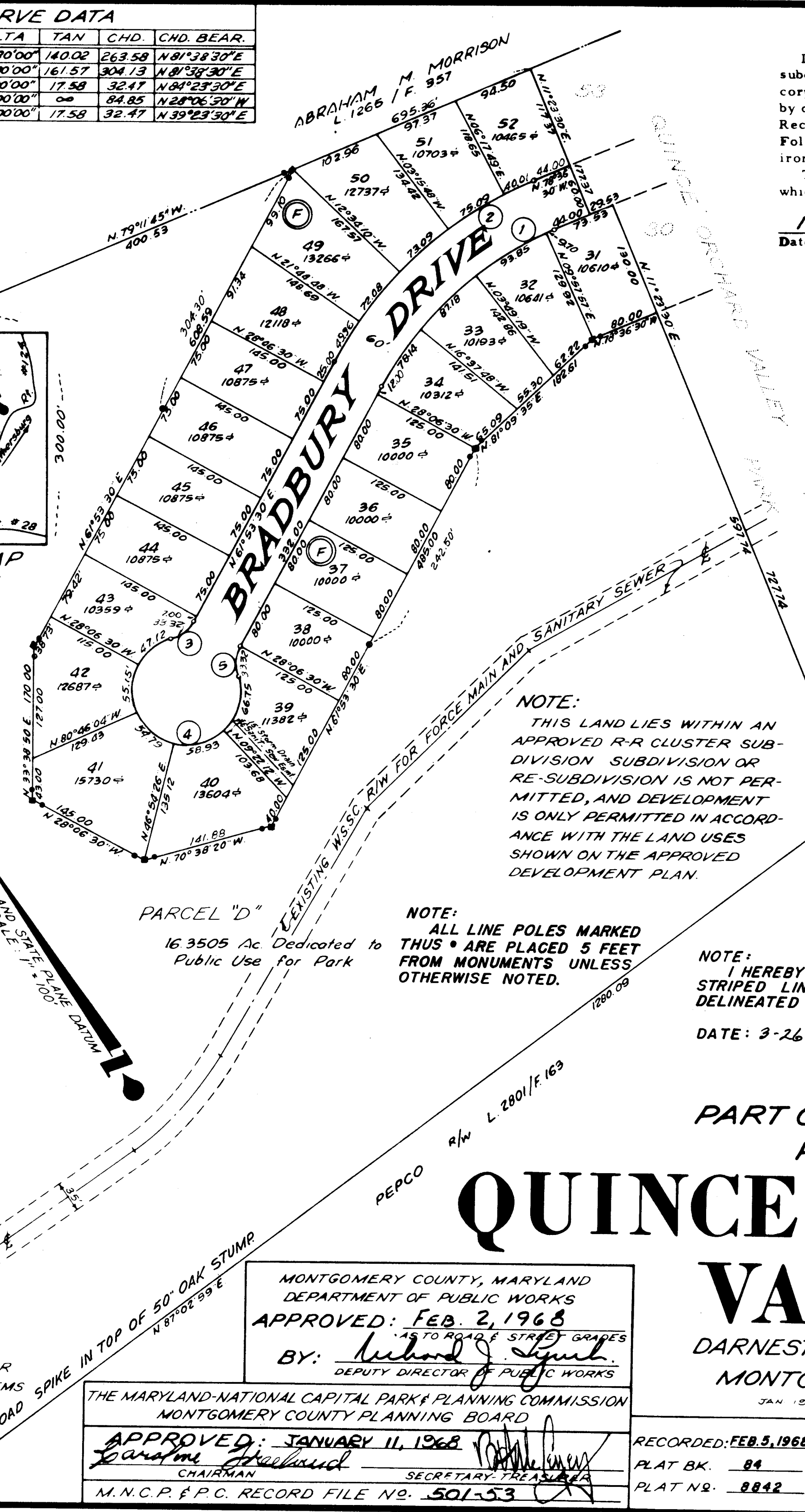


NO.	RADIUS	ARC	DELTA	TAN	CHD.	CHD. BEAR.
1	390.00	268.87	39°30'00"	140.02	263.58	N 81°38'30"E
2	450.00	310.23	39°30'00"	161.57	304.13	N 81°38'30"E
3	42.42	33.32	45°00'00"	17.58	32.47	N 84°23'30"E
4	60.00	282.74	270°00'00"	00	84.85	N 28°06'30"W
5	42.42	33.32	45°00'00"	17.58	32.47	N 39°23'30"E



VICINITY MAP



SURVEYOR'S CERTIFICATE
 I hereby certify that the plan shown hereon is correct; that it is a subdivision of part of that land conveyed by Aldre, Inc., a Delaware corporation, to Smoke Rise, Incorporated, a Maryland corporation, by deed dated JANUARY 5, 1968, and recorded among the Land Records of Montgomery County, Maryland, in Liber 3102 at Folio 94; and that concrete monuments marked thus □ and iron pipes marked thus ○ are in place where indicated.
 The total area included in this plat is 23,2503 acres of land, of which 17,5500 acres are dedicated to public use.

Date: 1-5-68
 Eldon E. Snider
 Registered Land Surveyor
 Maryland No. 3952

OWNER'S DEDICATION
 Smoke Rise, Incorporated, a Maryland corporation, by David C. Smith, President, and Shirley A. Smith, Secretary-Treasurer, owners of the property shown and described hereon, hereby adopt this plan of subdivision, establish the minimum building restriction lines in accordance with the provisions of the amendment to the Zoning Ordinance Text dated March 22, 1966, and numbered Section 104-7(h), dedicate the streets and park to public use, establish easements and rights of way for the construction, reconstruction, operation and maintenance of storm drains and sanitary sewers as shown, establish slope easements between the front dedication line and the building restriction line for the construction of streets and future sidewalks adjacent, contiguous and parallel to the streets shown hereon, said easements to be extinguished when all public improvements have been completed and accepted for maintenance by Montgomery County, Maryland, or other public agency.
 There are no suits of action, leases, liens or trusts on the property included in this plan of subdivision, except a certain deed of trust, and the parties in interest thereto have below indicated their assent to this plan.

Date: 1-5-68
 Smoke Rise Incorporated
 By: David C. Smith Attest: Shirley A. Smith
 David C. Smith, Shirley A. Smith,
 Pres. Sec.-Treas.

We hereby assent to this plan:
James G. Underwood Frederick G. Harbo
 Witness Trustee
Carville J. Cross
 Witness Trustee

NOTE: I HEREBY CERTIFY THAT THE CONCRETE MONUMENTS AND STRIPED LINE PIPES HAVE BEEN PLACED IN CONCRETE AS DELINEATED HEREON.

DATE: 3-26-68
 Eldon E. Snider
 ELDON E. SNIDER
 REGISTERED LAND SURVEYOR
 MARYLAND NO. 3952

MONTGOMERY COUNTY, MARYLAND
 DEPARTMENT OF PUBLIC WORKS
 APPROVED: FEB. 2, 1968
 BY: Richard J. Sigurd
 DEPUTY DIRECTOR OF PUBLIC WORKS

THE MARYLAND-NATIONAL CAPITAL PARK & PLANNING COMMISSION
 MONTGOMERY COUNTY PLANNING BOARD
 APPROVED: JANUARY 11, 1968
 CHAIRMAN SECRETARY-TREASURER
 M.N.C.P. & P.C. RECORD FILE NO. 501-53

RECORDED: FEB. 5, 1968
 PLAT BK. 84
 PLAT NO. 8842

PART OF BLOCK F
 PLAT 4
QUINCE ORCHARD VALLEY
 DARNESTOWN ELECTION DISTRICT NO. 6
 MONTGOMERY COUNTY, MARYLAND

ELDON E. SNIDER & ASSOCIATES
 LAND SURVEYORS
 LAND PLANNING CONSULTANTS
 213 N. FREDERICK AVENUE GAITHERSBURG, MARYLAND 20760
 948 3235