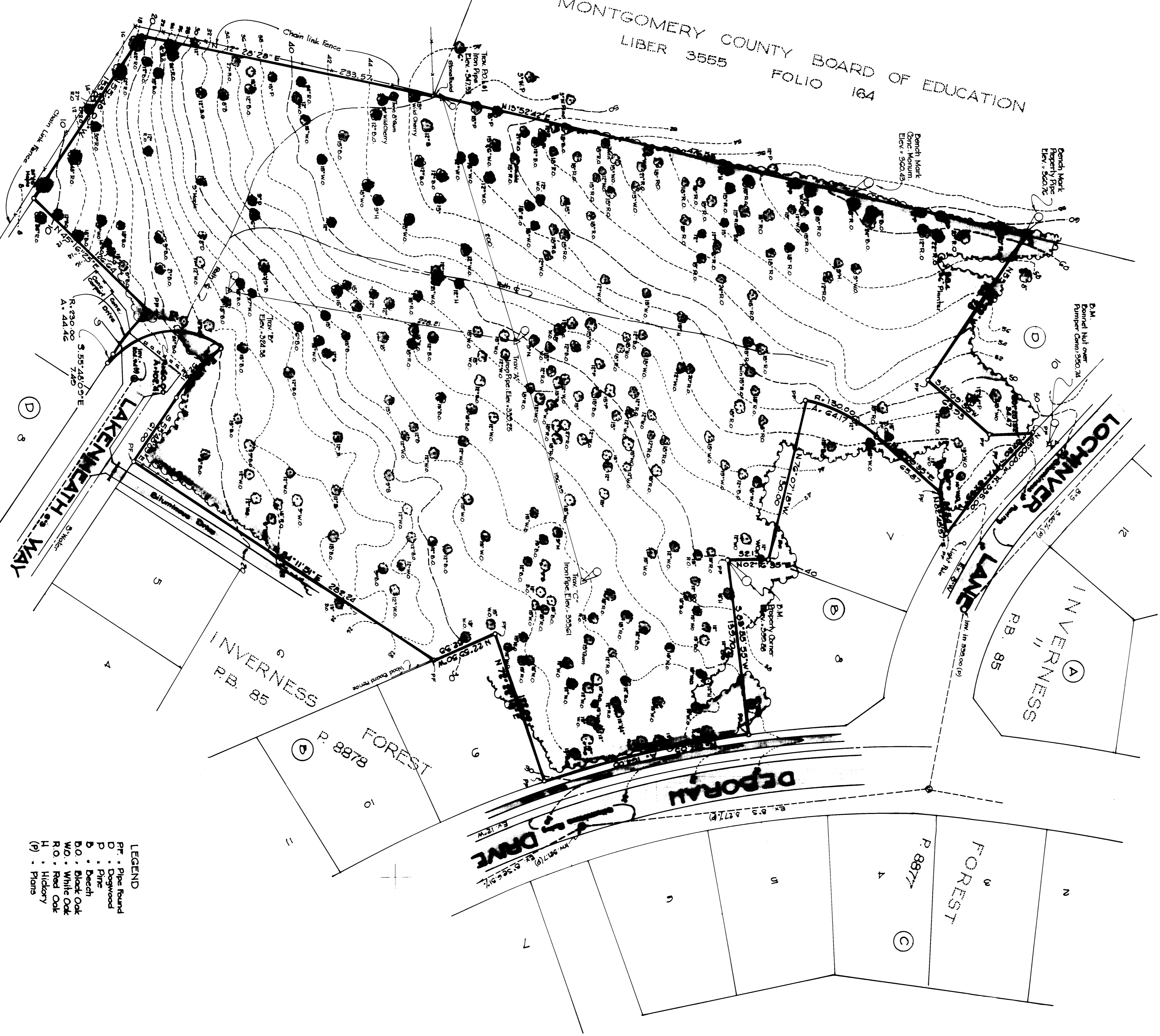
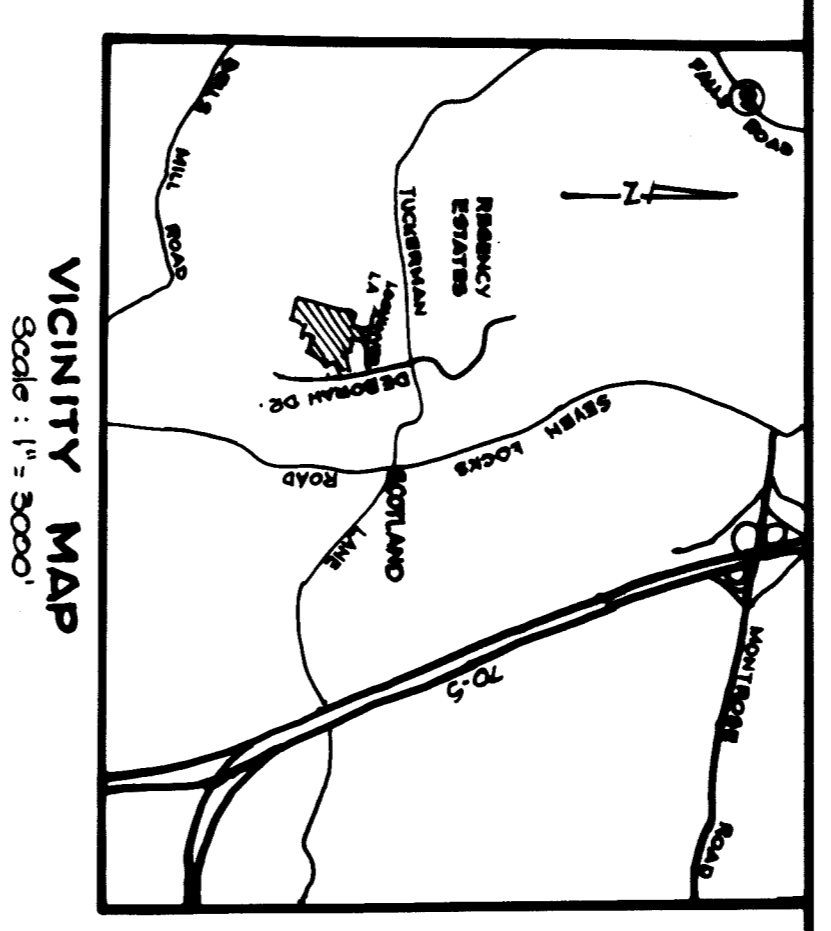


BELLS MILL ROAD CORPORATION
Liber 2800 Folio 381

MONTGOMERY COUNTY BOARD OF EDUCATION
LIBER 3555 FOLIO 164



- LEGEND
- PR - Pipe Round
 - D - Ditch
 - P - Pipe
 - B - Bench
 - BO - Black Oak
 - WO - White Oak
 - RO - Red Oak
 - H - Hilly
 - (P) - Plans



- NOTES:
1. Boundary as shown from Deed Recorded in Liber 3091 of Folio 849.
 2. Vertical Datum is as established by M.N.C.P. & P. Commission
 3. Water & Sewer Grades from W33C Cont'd 60AM/33108.4
- 5.6206 Acres

SCANNED

TOPOGRAPHIC SURVEY SCOTLAND FOGAL PARK INVERNESS FOREST

TENTH ELECTION DISTRICT
MONTGOMERY COUNTY, MARYLAND
SCALE: 1:400 CONTOUR INTERVAL - 2' JUNE, 1972
JOHN H. Mc GOVERN
CIVIL ENGINEER AND LAND SURVEYOR
11501 GEORGIA AVENUE, WHEATON, MARYLAND, 20902
903-6356

NEIGHBORHOOD PARK