

VICINITY MAP 1"-2000'

RESUBDIVISION OF BLOCKS T & R SECTION-3 SEVEN OAKS P.B. 5 P. 430

NOTE:

- 1. VERTICAL DATUM FROM INVERTS OF MANHOLES #S 4041 & 4040 W.S.S.C. CONTRACT # 33170 SHEET 2 OF 3.

COUNTY RIGHT-OF-WAY/PARK AREA: 32,683 SF. or 0.7503 AC.

LEGEND

- CL.F - CHAIN LINK FENCE
- C.M.T. - CORRUGATED METAL PIPE
- E.P. - EDGE OF PAVING
- F.H. - FIRE HYDRANT
- INV. - INVERT
- O.H.W. - OVERHEAD WIRES
- P.B. - FLAT BOOK FLAT
- R.C.P. - REINFORCED CONCRETE PIPE
- T.C. - TOP OF CURB
- W.V. - WATER VALVE

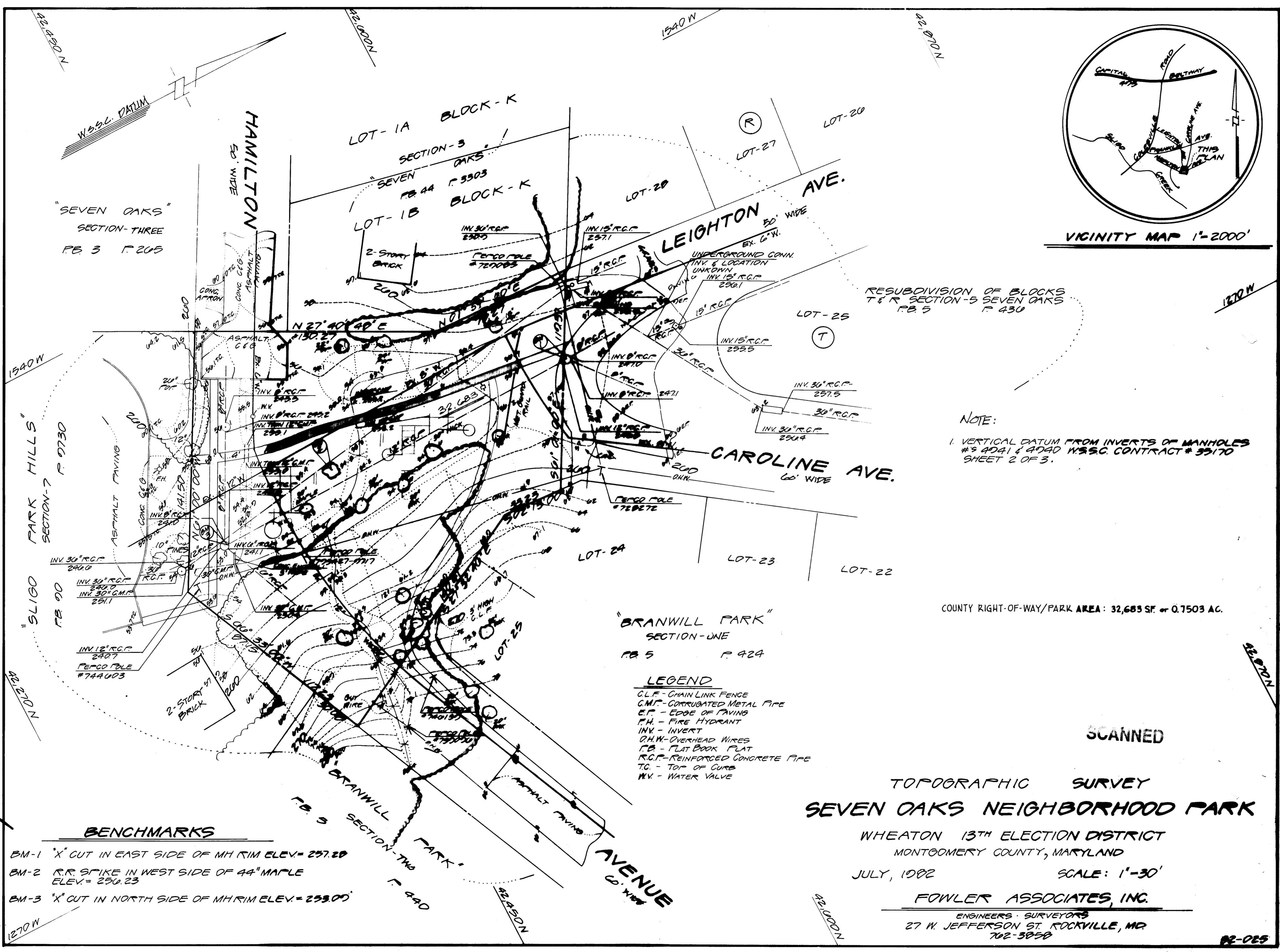
SCANNED

TOPOGRAPHIC SURVEY  
SEVEN OAKS NEIGHBORHOOD PARK

WHEATON 13<sup>TH</sup> ELECTION DISTRICT  
MONTGOMERY COUNTY, MARYLAND  
JULY, 1982 SCALE: 1"-30'

FOWLER ASSOCIATES, INC.  
ENGINEERS - SURVEYORS  
27 W. JEFFERSON ST. ROCKVILLE, MD  
702-3858

82-085



BENCHMARKS

- BM-1 "X" CUT IN EAST SIDE OF MH RIM ELEV. = 257.20
- BM-2 R.R. SPIKE IN WEST SIDE OF 44" MAPLE ELEV. = 250.23
- BM-3 "X" CUT IN NORTH SIDE OF MH RIM ELEV. = 253.00