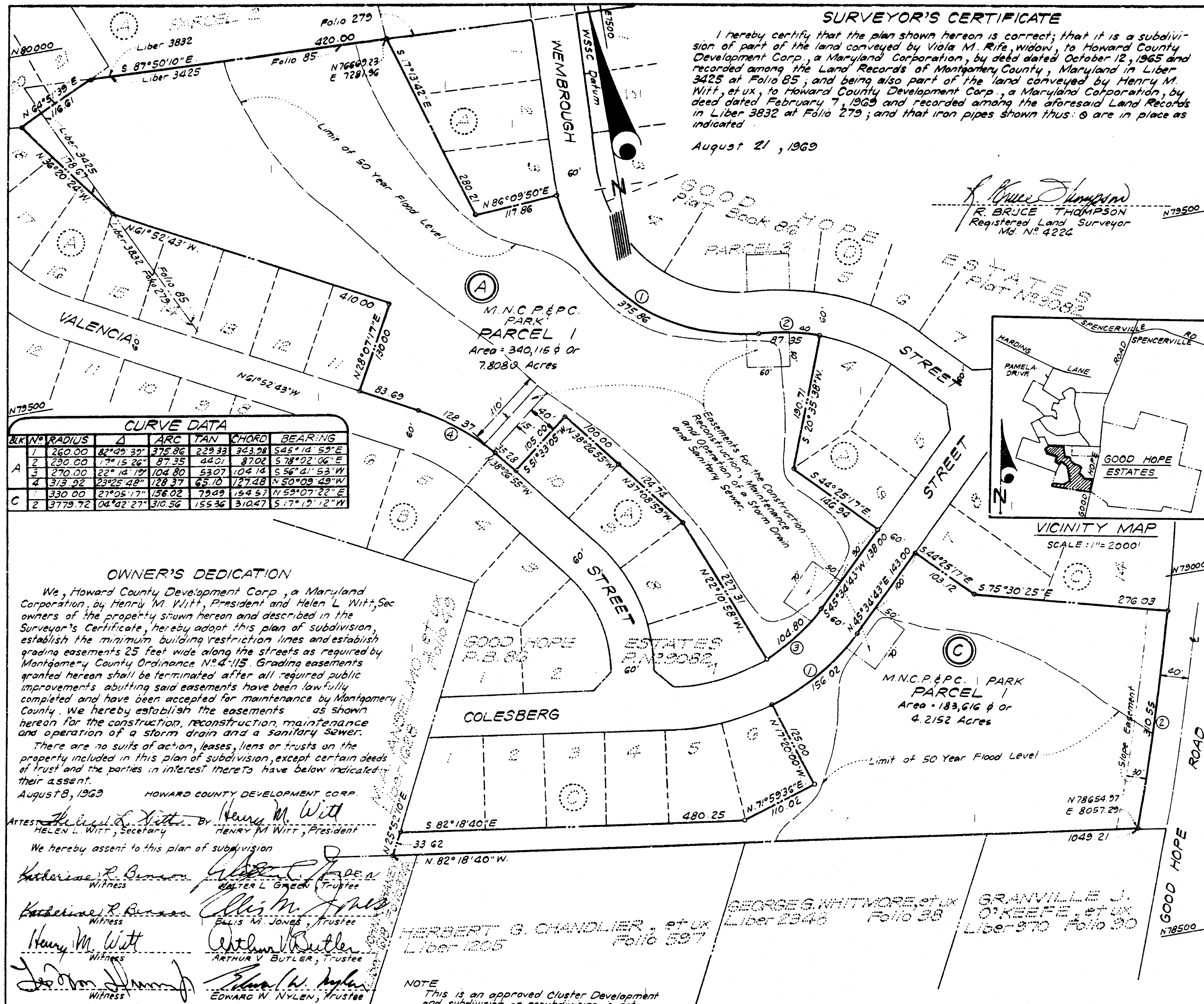


SURVEYOR'S CERTIFICATE

I hereby certify that the plan shown hereon is correct; that it is a subdivision of part of the land conveyed by Viola M. Rife, widow, to Howard County Development Corp., a Maryland Corporation, by deed dated October 12, 1965 and recorded among the Land Records of Montgomery County, Maryland in Liber 3425 at Folio 85; and being also part of the land conveyed by Henry M. Witt, et ux, to Howard County Development Corp., a Maryland Corporation, by deed dated February 7, 1969 and recorded among the aforesaid Land Records in Liber 3832 at Folio 279; and that iron pipes shown thus: Ⓢ are in place as indicated.

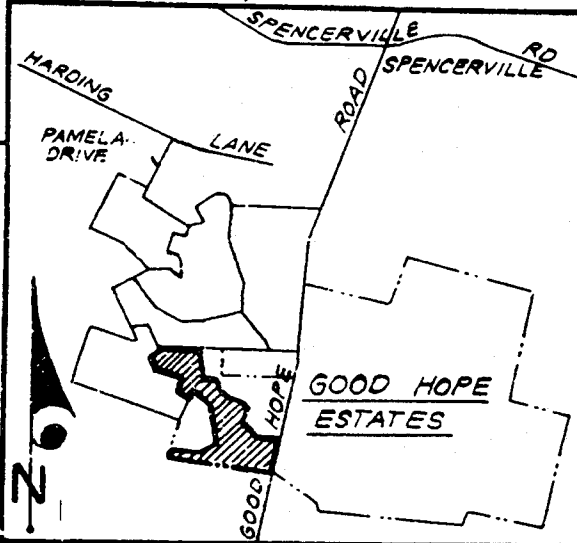
August 21, 1969

R. Bruce Thompson
R. BRUCE THOMPSON
 Registered Land Surveyor
 Md. No. 4226



CURVE DATA

BLK. NO.	RADIUS	Δ	ARC	TAN	CHORD	BEARING
A 1	260.00	82°45'30"	375.86	229.33	343.98	S45°14'59"E
A 2	290.00	17°15'26"	87.35	44.01	87.02	S78°02'06"E
A 3	270.00	22°14'19"	104.80	53.07	104.14	S56°41'53"W
A 4	313.92	23°25'48"	128.37	65.10	127.48	N50°09'49"W
C 1	330.00	27°05'17"	156.02	79.09	154.57	N59°07'22"E
C 2	3779.72	04°47'27"	310.56	155.36	310.47	S17°12'12"W



OWNER'S DEDICATION

We, Howard County Development Corp., a Maryland Corporation, by Henry M. Witt, President and Helen L. Witt, Secretary, owners of the property shown hereon and described in the Surveyor's Certificate, hereby adopt this plan of subdivision, establish the minimum building restriction lines and establish grading easements 25 feet wide along the streets as required by Montgomery County Ordinance No. 4-115. Grading easements granted hereon shall be terminated after all required public improvements abutting said easements have been lawfully completed and have been accepted for maintenance by Montgomery County. We hereby establish the easements as shown hereon for the construction, reconstruction, maintenance and operation of a storm drain and a sanitary sewer.

There are no suits of action, leases, liens or trusts on the property included in this plan of subdivision, except certain deeds of trust and the parties in interest thereto have below indicated their assent.

August 8, 1969 HOWARD COUNTY DEVELOPMENT CORP.

ATTEST: *Helen L. Witt* By *Henry M. Witt*
 HELEN L. WITT, Secretary HENRY M. WITT, President

We hereby assent to this plan of subdivision

Katherine R. Benson Witness *Walter L. Green* Trustee
Katherine R. Benson Witness *Ellis M. Jones* Trustee
Henry M. Witt Witness *Arthur V. Butler* Trustee
Edmund W. Nylen Witness *Edmund W. Nylen* Trustee

NOTE
 This is an approved Cluster Development and subdivision or resubdivision is not permitted. Development must be in accord with the approved Preliminary Plan.

**PART OF BLOCKS A & C
 GOOD HOPE ESTATES**

COLESVILLE (N:5) DISTRICT
 MONTGOMERY COUNTY, MARYLAND
 SCALE: 1"=100'
 AUGUST, 1969

FOR PUBLIC SEWER AND WATER SYSTEMS ONLY
 MARYLAND-NATIONAL CAPITAL PARKS PLANNING COMMISSION
 MONTGOMERY COUNTY PLANNING BOARD
 APPROVED: *September 4, 1969*
 DATE
Caroline Ireland CHAIRMAN
Thomas A. Brown SECRETARY-TREASURER
 M.N.C.P.&P.C. RECORD FILE NO. 506-88

MONTGOMERY COUNTY, MARYLAND
 DEPARTMENT OF PUBLIC WORKS
 APPROVED: *Oct. 31, 1969*
 DATE
 BY: *Richard J. Lynch*
 DEP. DIR. PUBLIC WORKS

Plat 9474
 RECORDED: _____
 PLAT BOOK: _____
 PLAT NO.: _____

GREENHORNE & O'MARA
 ENGINEERS • PLANNERS • SURVEYORS
 6715 KENILWORTH AVE.
 RIVERDALE, MD. 20840