

SURVEYOR'S CERTIFICATE

I hereby certify that the plan shown hereon is correct; that it is a subdivision of part of the land conveyed by Henry M. Witt, et ux, to Howard County Development Corp., a Maryland Corporation, by deed dated February 7, 1969 and recorded among the Land Records of Prince Georges County, Maryland in Liber 3832 at Folio 279; that iron pipes shown thus \odot are in place as indicated and that the total area dedicated to public use in this plan of subdivision is 110,260 square feet.

August 21, 1969

WEMBROUGH N.P.

R. Bruce Thompson
R. BRUCE THOMPSON
 Registered Land Surveyor
 Md. No. 4224

BLK	N°	RADIUS	Δ	ARC	TAN	CHORD	BEARING
A	g	440.00	23°09'59"	177.90	90.18	176.70	S09°25'09"E
S	5	500.00	23°09'59"	202.16	102.48	200.79	N09°25'09"W
D	6a	779.27	18°52'11"	256.65	129.49	255.48	N77°37'06"E
EE	15b	849.27	13°25'01"	288.80	145.81	287.41	N79°21'15"E
	15c	849.27	10°27'22"	305.98	156.73	308.26	S78°38'23"W



OWNER'S DEDICATION

We, Howard County Development Corp., Maryland Corporation, by, Henry M. Witt, President and Helen L. Witt, Secretary, owners of the property shown hereon and described in the Surveyor's Certificate, hereby adopt this plan of subdivision, establish the minimum building restriction lines, dedicate the streets to public use and establish grading easements 25 feet wide as required by Montgomery County Ordinance No. 4-115. Grading easements granted hereon shall be terminated after all required public improvements abutting said easements have been lawfully completed and have been accepted for maintenance by Montgomery County. We hereby establish the easements as shown hereon for the construction, reconstruction, maintenance and operation of a storm drain and a sanitary sewer.

There are no suits of action, leases, liens or trusts on the property included in this plan of subdivision, except certain deeds of trust and the parties in interest thereto have below indicated their assent

August 8, 1969 HOWARD COUNTY DEVELOPMENT CORP.

ATTEST: *Helen L. Witt*
 HELEN L. WITT, Secretary

By: *Henry M. Witt*
 HENRY M. WITT, President

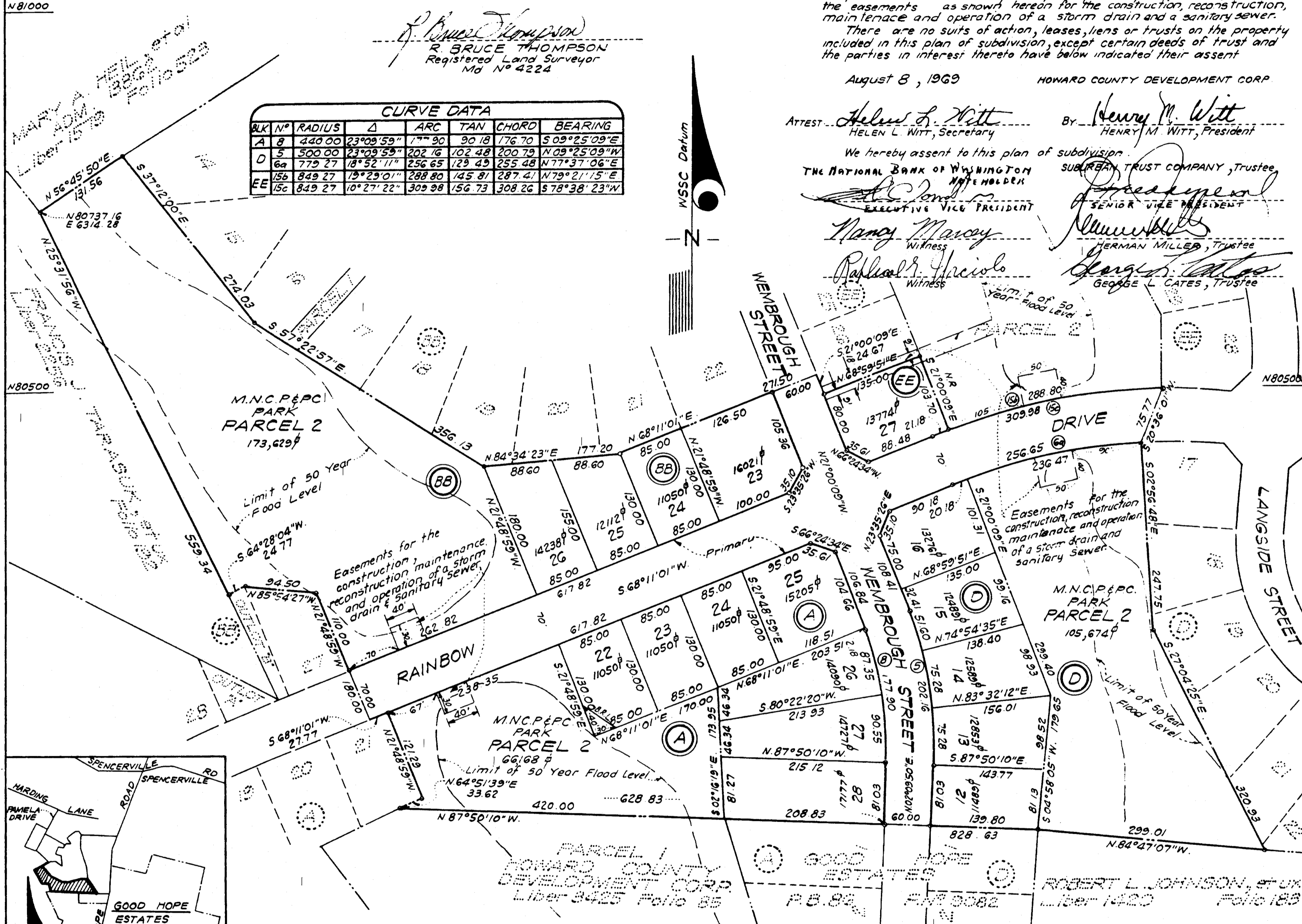
We hereby assent to this plan of subdivision.

Nancy Marney
 WITNESS

Rafael H. Garcia
 WITNESS

Herman Miller
 HERMAN MILLER, Trustee

George L. Cates
 GEORGE L. CATES, Trustee



NOTE: This is an approved cluster development and subdivision of resubdivision is not permitted. Development must be in accord with the approved Preliminary Plan.

**PART OF BLOCKS A, BB, D & EE
 GOOD HOPE ESTATES**

COLESVILLE (N°5) DISTRICT
 MONTGOMERY COUNTY, MARYLAND

SCALE: 1"=100' AUGUST, 1969

VICINITY MAP
 SCALE: 1"=2000'

FOR PUBLIC SEWER AND WATER SYSTEMS ONLY

MARYLAND-NATIONAL CAPITAL PARK & PLANNING COMMISSION
 MONTGOMERY COUNTY PLANNING BOARD

APPROVED: *September 4, 1969*
 DATE

Charles L. Campbell
 CHAIRMAN

Thomas G. Camp
 SECRETARY-TREASURER

M.N.C.P.&P.C. RECORD FILE NO. 506-86

MONTGOMERY COUNTY, MARYLAND
 DEPARTMENT OF PUBLIC WORKS

APPROVED: *Oct. 31, 1969*
 DATE

As To ROAD AND STREET GRADES
 BY: *Richard J. Lynch*

REP. DIR. PUBLIC WORKS

Plot 9472

RECORDED: _____
 PLAT BOOK: _____
 PLAT NO.: _____

GREENHORNE & O'MARA
 ENGINEERS • PLANNERS • SURVEYORS
 6715 KENILWORTH AVE.
 RIVERDALE, MD. 20840

1773

Plat Total Area = 15.61 Acres

1749-M(10)