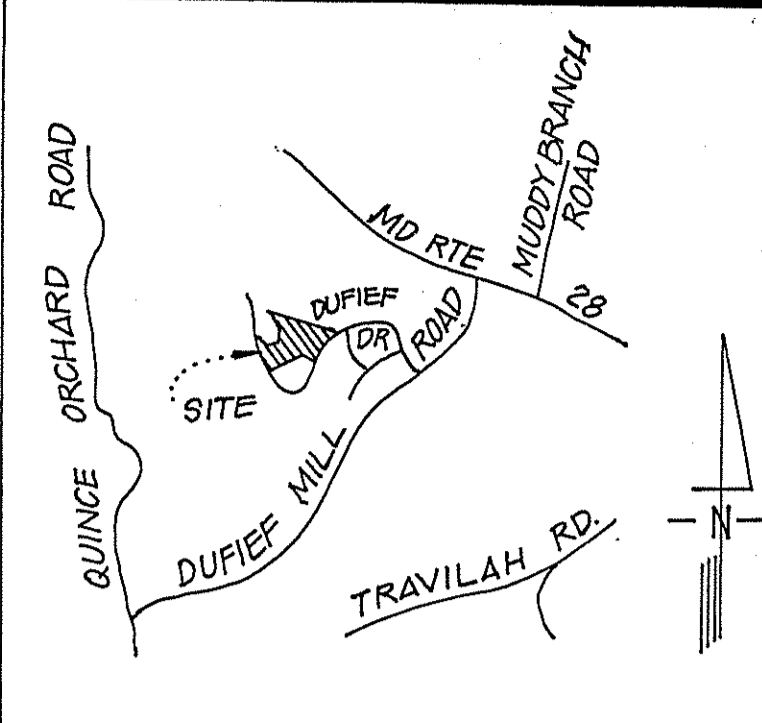


CUT RAIL IN 30"
 POPLAR 60" LT. OF
 E. 57+30
 EL. 387.98

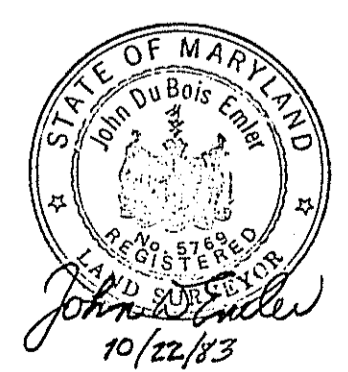
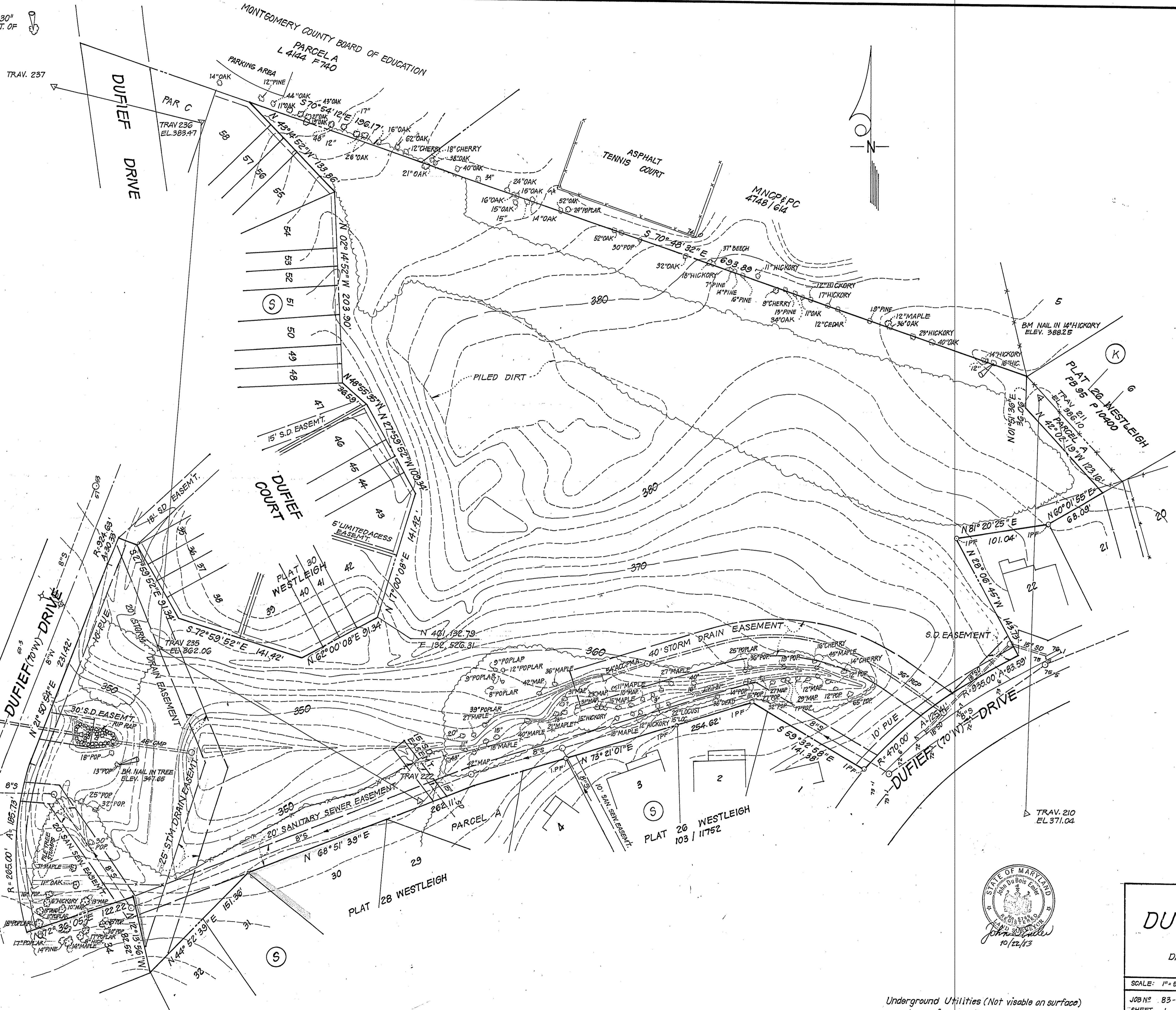


732000E
 461500 N

733500E
 461500 N

732000E
 461000 N

733500E
 461000 N



TOPOGRAPHIC SURVEY
DUFFIEF LOCAL PARK

DARNESTOWN (6TH) ELECTION DISTRICT
 MONTGOMERY COUNTY, MARYLAND

SCALE: 1" = 50'	DRAWN BY: RN	DESIGNED BY:	CHECKED BY: JDE
JOB N°: 83-109	REVISIONS		DATE
SHEET 1 OF 1			

PREPARED BY:
John D. Emler & Associates
 Consulting Engineers Land Surveyor
 8811 Colesville Road Silver Spring, Md 20910

Underground Utilities (Not visible on surface)
 are shown from available records.