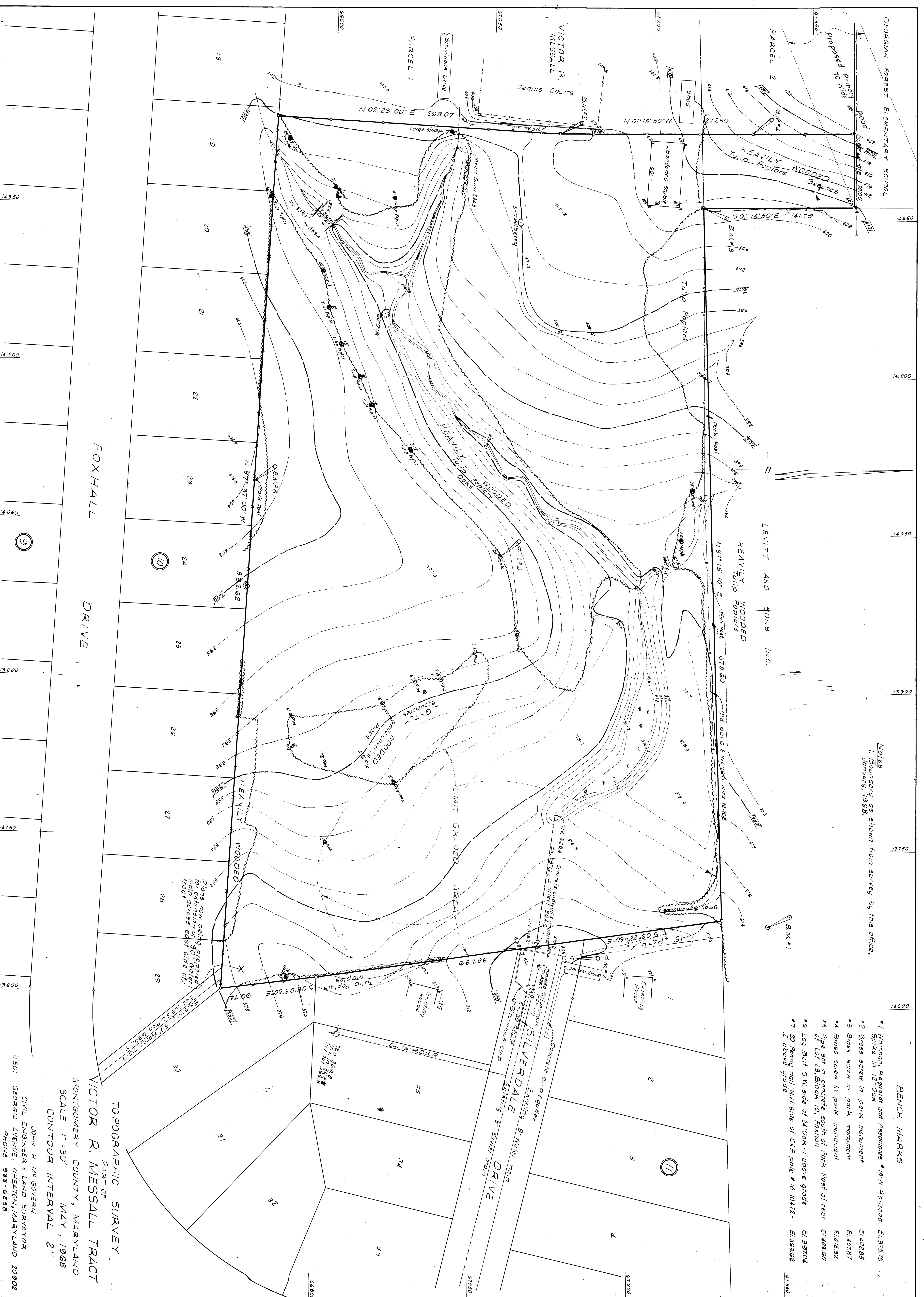


Notes  
1. Boundary as shown from survey by this office,  
1. January, 1968.

BENCH MARKS

- #1 Whitton, Regard and Associates #15-W Railroad E:31575 Spike in 12" Oak
- #2 Brass screw in park monument E:40285
- #3 Brass screw in park monument E:40287
- #4 Brass screw in park monument E:41532
- #5 Pipe set in concrete, south of Park Post of rear of Lot 23, Block 10, Foxhall E:40960
- #6 Log Bolt S.W. side of 24' Oak 1' above grade E:39704
- #7 20 Penny nail NW side of C/P pole # M 10472-2' above grade E:36302



TOPOGRAPHIC SURVEY  
PART OF  
VICTOR R. MESSALL TRACT  
MONTGOMERY COUNTY, MARYLAND  
SCALE 1" = 30'  
MAY, 1968  
CONTOUR INTERVAL 2'

JOHN H. MC GOVERN  
CIVIL ENGINEER & LAND SURVEYOR  
11501 GEORGIA AVENUE, WHEATON, MARYLAND 20902  
PHONE 933-0558

14350
14200
14050
13900
13750
13600
13450