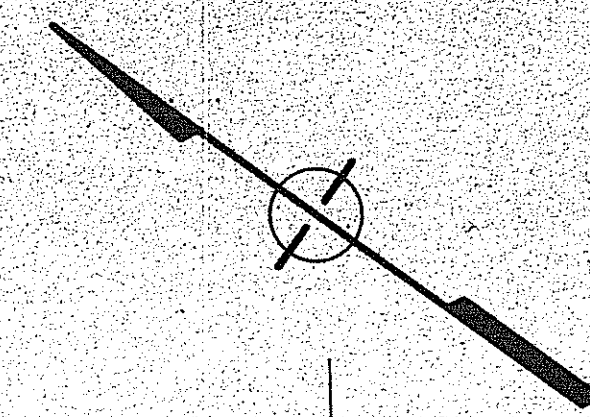
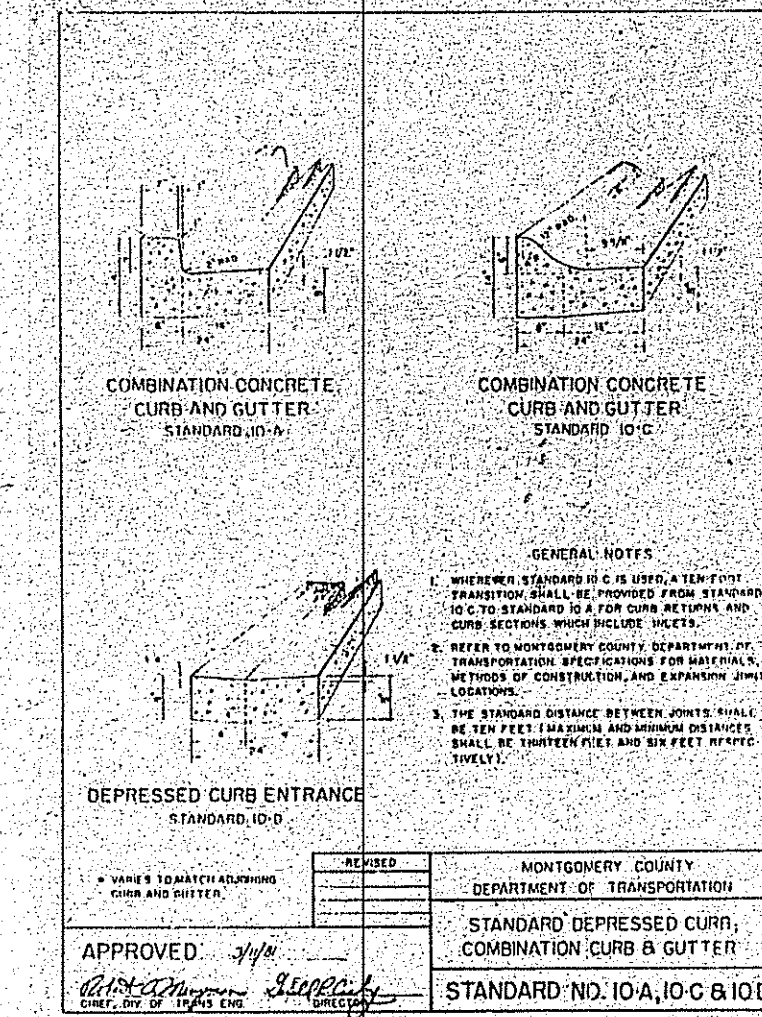
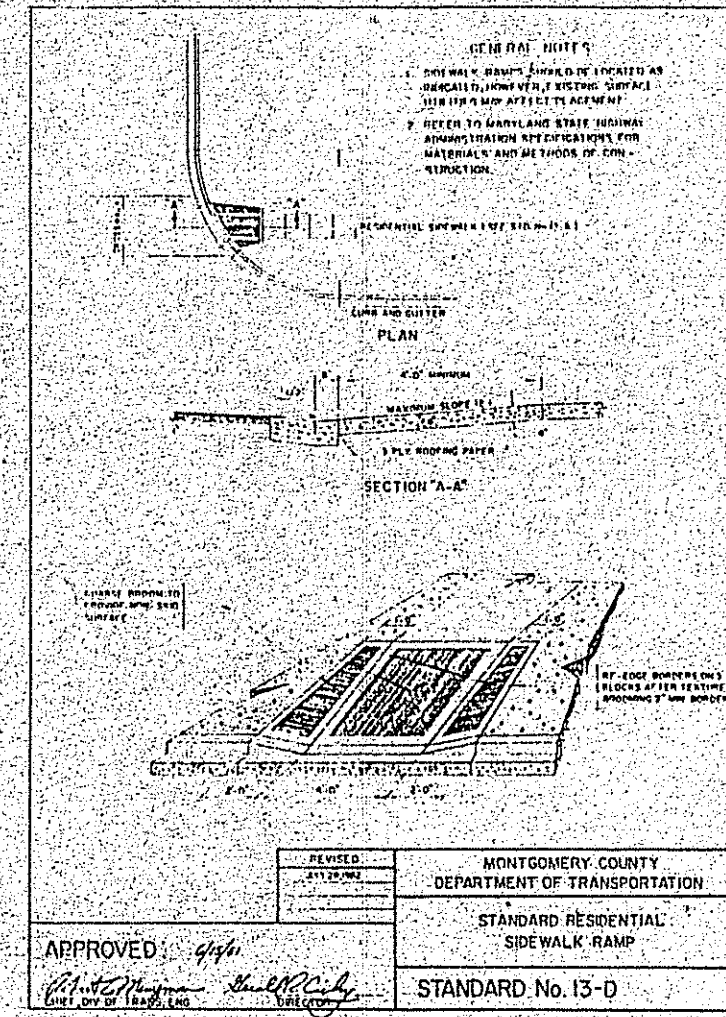
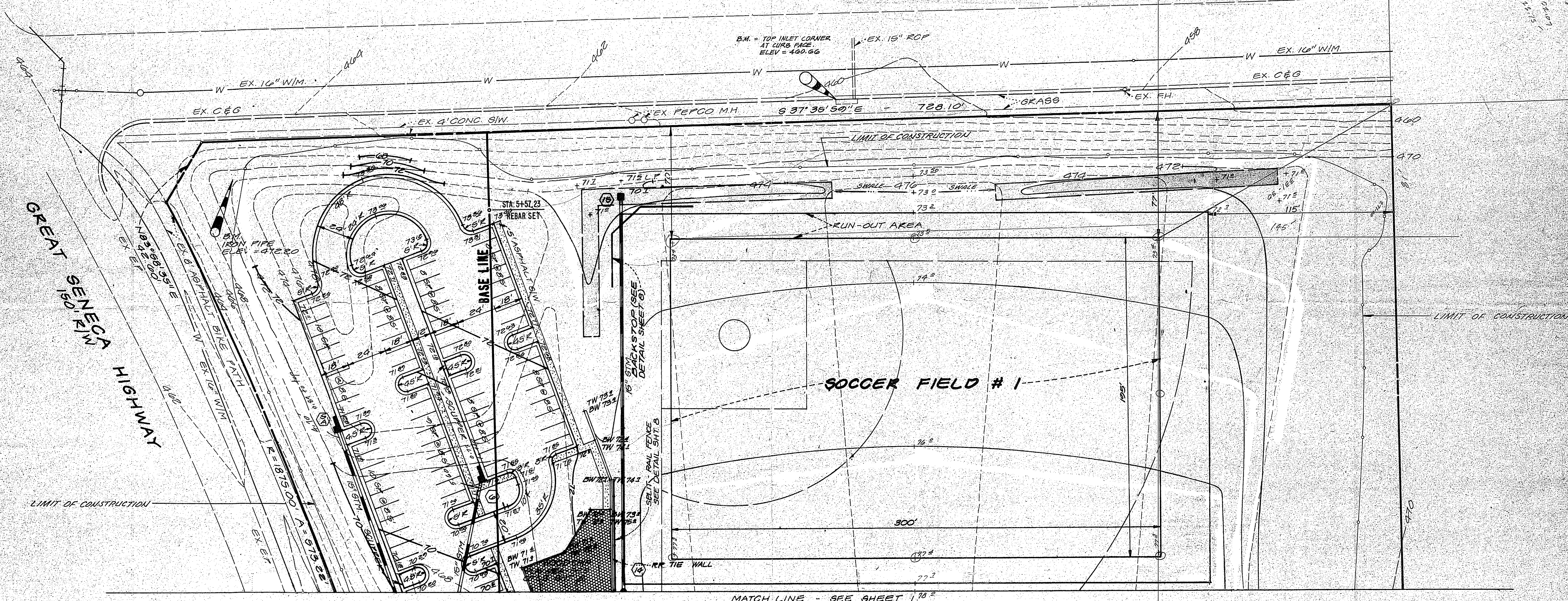


WISTERIA DRIVE  
80' R/W



APPROVED: [Signature] MONTGOMERY COUNTY DEPARTMENT OF TRANSPORTATION  
STANDARD RESIDENTIAL SIDE WALK RAMP  
STANDARD No. 13-D

APPROVED: [Signature] MONTGOMERY COUNTY DEPARTMENT OF TRANSPORTATION  
STANDARD DEPRESSED CURB, COMBINATION CURB & GUTTER  
STANDARD NO. 10A, 10C & 10D



MATCH LINE - SEE SHEET 1782

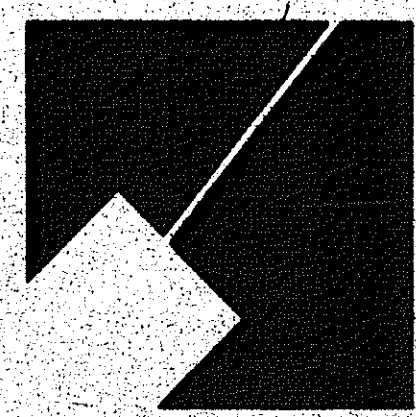
■ DENOTES AREA TO BE SODDED IN ACCORDANCE WITH 1983 MARYLAND EROSION AND SEDIMENT CONTROL MANUAL HOWEVER AREA WITH SLOPE STEEPER THAN 3:1 SHALL BE STABILIZED WITH A LOW MAINTENANCE GRASSING COVER, MAINLY GRASS/VEGET.

EX-1	GEOM. 2	ORIG. 2	UTIL. 2
EX-2	GEOM. 2	ORIG. 2	UTIL. 2
EX-3	GEOM. 2	ORIG. 2	UTIL. 2
EX-4	GEOM. 2	ORIG. 2	UTIL. 2
EX-5	GEOM. 2	ORIG. 2	UTIL. 2
EX-6	GEOM. 2	ORIG. 2	UTIL. 2
EX-7	GEOM. 2	ORIG. 2	UTIL. 2
EX-8	GEOM. 2	ORIG. 2	UTIL. 2
EX-9	GEOM. 2	ORIG. 2	UTIL. 2
EX-10	GEOM. 2	ORIG. 2	UTIL. 2
EX-11	GEOM. 2	ORIG. 2	UTIL. 2
EX-12	GEOM. 2	ORIG. 2	UTIL. 2
EX-13	GEOM. 2	ORIG. 2	UTIL. 2
EX-14	GEOM. 2	ORIG. 2	UTIL. 2
EX-15	GEOM. 2	ORIG. 2	UTIL. 2
EX-16	GEOM. 2	ORIG. 2	UTIL. 2
EX-17	GEOM. 2	ORIG. 2	UTIL. 2
EX-18	GEOM. 2	ORIG. 2	UTIL. 2
EX-19	GEOM. 2	ORIG. 2	UTIL. 2
EX-20	GEOM. 2	ORIG. 2	UTIL. 2
EX-21	GEOM. 2	ORIG. 2	UTIL. 2
EX-22	GEOM. 2	ORIG. 2	UTIL. 2
EX-23	GEOM. 2	ORIG. 2	UTIL. 2
EX-24	GEOM. 2	ORIG. 2	UTIL. 2
EX-25	GEOM. 2	ORIG. 2	UTIL. 2
EX-26	GEOM. 2	ORIG. 2	UTIL. 2
EX-27	GEOM. 2	ORIG. 2	UTIL. 2
EX-28	GEOM. 2	ORIG. 2	UTIL. 2
EX-29	GEOM. 2	ORIG. 2	UTIL. 2
EX-30	GEOM. 2	ORIG. 2	UTIL. 2
EX-31	GEOM. 2	ORIG. 2	UTIL. 2
EX-32	GEOM. 2	ORIG. 2	UTIL. 2
EX-33	GEOM. 2	ORIG. 2	UTIL. 2
EX-34	GEOM. 2	ORIG. 2	UTIL. 2
EX-35	GEOM. 2	ORIG. 2	UTIL. 2
EX-36	GEOM. 2	ORIG. 2	UTIL. 2
EX-37	GEOM. 2	ORIG. 2	UTIL. 2
EX-38	GEOM. 2	ORIG. 2	UTIL. 2
EX-39	GEOM. 2	ORIG. 2	UTIL. 2
EX-40	GEOM. 2	ORIG. 2	UTIL. 2
EX-41	GEOM. 2	ORIG. 2	UTIL. 2
EX-42	GEOM. 2	ORIG. 2	UTIL. 2
EX-43	GEOM. 2	ORIG. 2	UTIL. 2
EX-44	GEOM. 2	ORIG. 2	UTIL. 2
EX-45	GEOM. 2	ORIG. 2	UTIL. 2
EX-46	GEOM. 2	ORIG. 2	UTIL. 2
EX-47	GEOM. 2	ORIG. 2	UTIL. 2
EX-48	GEOM. 2	ORIG. 2	UTIL. 2
EX-49	GEOM. 2	ORIG. 2	UTIL. 2
EX-50	GEOM. 2	ORIG. 2	UTIL. 2
EX-51	GEOM. 2	ORIG. 2	UTIL. 2
EX-52	GEOM. 2	ORIG. 2	UTIL. 2
EX-53	GEOM. 2	ORIG. 2	UTIL. 2
EX-54	GEOM. 2	ORIG. 2	UTIL. 2
EX-55	GEOM. 2	ORIG. 2	UTIL. 2
EX-56	GEOM. 2	ORIG. 2	UTIL. 2
EX-57	GEOM. 2	ORIG. 2	UTIL. 2
EX-58	GEOM. 2	ORIG. 2	UTIL. 2
EX-59	GEOM. 2	ORIG. 2	UTIL. 2
EX-60	GEOM. 2	ORIG. 2	UTIL. 2
EX-61	GEOM. 2	ORIG. 2	UTIL. 2
EX-62	GEOM. 2	ORIG. 2	UTIL. 2
EX-63	GEOM. 2	ORIG. 2	UTIL. 2
EX-64	GEOM. 2	ORIG. 2	UTIL. 2
EX-65	GEOM. 2	ORIG. 2	UTIL. 2
EX-66	GEOM. 2	ORIG. 2	UTIL. 2
EX-67	GEOM. 2	ORIG. 2	UTIL. 2
EX-68	GEOM. 2	ORIG. 2	UTIL. 2
EX-69	GEOM. 2	ORIG. 2	UTIL. 2
EX-70	GEOM. 2	ORIG. 2	UTIL. 2
EX-71	GEOM. 2	ORIG. 2	UTIL. 2
EX-72	GEOM. 2	ORIG. 2	UTIL. 2
EX-73	GEOM. 2	ORIG. 2	UTIL. 2
EX-74	GEOM. 2	ORIG. 2	UTIL. 2
EX-75	GEOM. 2	ORIG. 2	UTIL. 2
EX-76	GEOM. 2	ORIG. 2	UTIL. 2
EX-77	GEOM. 2	ORIG. 2	UTIL. 2
EX-78	GEOM. 2	ORIG. 2	UTIL. 2
EX-79	GEOM. 2	ORIG. 2	UTIL. 2
EX-80	GEOM. 2	ORIG. 2	UTIL. 2
EX-81	GEOM. 2	ORIG. 2	UTIL. 2
EX-82	GEOM. 2	ORIG. 2	UTIL. 2
EX-83	GEOM. 2	ORIG. 2	UTIL. 2
EX-84	GEOM. 2	ORIG. 2	UTIL. 2
EX-85	GEOM. 2	ORIG. 2	UTIL. 2
EX-86	GEOM. 2	ORIG. 2	UTIL. 2
EX-87	GEOM. 2	ORIG. 2	UTIL. 2
EX-88	GEOM. 2	ORIG. 2	UTIL. 2
EX-89	GEOM. 2	ORIG. 2	UTIL. 2
EX-90	GEOM. 2	ORIG. 2	UTIL. 2
EX-91	GEOM. 2	ORIG. 2	UTIL. 2
EX-92	GEOM. 2	ORIG. 2	UTIL. 2
EX-93	GEOM. 2	ORIG. 2	UTIL. 2
EX-94	GEOM. 2	ORIG. 2	UTIL. 2
EX-95	GEOM. 2	ORIG. 2	UTIL. 2
EX-96	GEOM. 2	ORIG. 2	UTIL. 2
EX-97	GEOM. 2	ORIG. 2	UTIL. 2
EX-98	GEOM. 2	ORIG. 2	UTIL. 2
EX-99	GEOM. 2	ORIG. 2	UTIL. 2
EX-100	GEOM. 2	ORIG. 2	UTIL. 2

design  
 landscape architect: [Signature] date: [Date]  
 architect: [Signature] date: 10/2/88  
 engineer: [Signature] date: [Date]  
 P.D.S. draw by: [Signature] date: [Date]

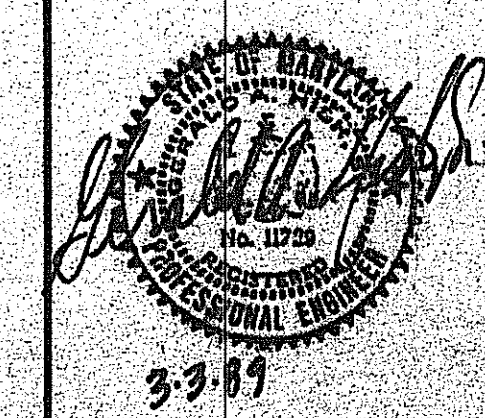
review and approval  
 chief of park planning, engineering and design: [Signature] date: 9/5/89  
 director of parks: [Signature] date: [Date]  
 montgomery county planning board: [Signature] date: [Date]

review and comment  
 [Signature] date: 9/1/89  
 [Signature] date: [Date]  
 [Signature] date: [Date]  
 [Signature] date: [Date]



The Maryland-National Capital Park and Planning Commission  
 Department of Parks/Montgomery County

Parkside Headquarters  
 9500 Brunnet Avenue  
 Silver Spring, Maryland 20901  
 (301) 495-2535



scale: 1" = 30'

project: GRADING PLAN  
**GUNNERS LAKE LOCAL PARK**  
 L5938 F573 8.93 AC.  
 sheet 2 of 10