


PLAT OF  
**JESUP BLAIR PARK**  
 SILVER SPRING  
 MONTGOMERY COUNTY, MARYLAND.

SCALE: 1"=100'

JULY, 1939.

MARYLAND-NATIONAL CAPITAL PARK AND PLANNING COMMISSION  
 OFFICE OF THE CHIEF ENGINEER  
 SILVER SPRING, MARYLAND.

ENGINEER'S CERTIFICATE

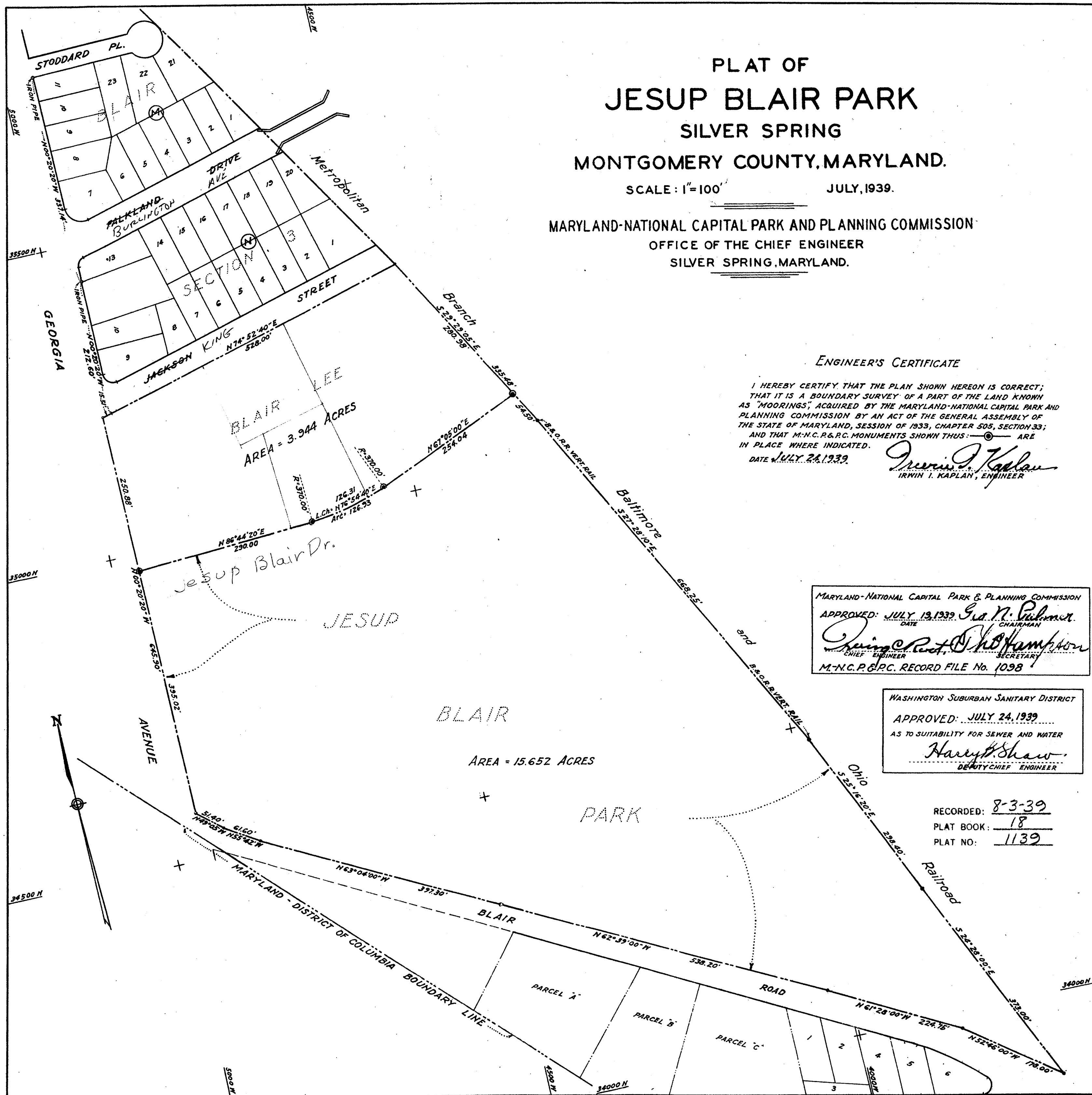
I HEREBY CERTIFY THAT THE PLAN SHOWN HEREON IS CORRECT;  
 THAT IT IS A BOUNDARY SURVEY OF A PART OF THE LAND KNOWN  
 AS "MOORINGS", ACQUIRED BY THE MARYLAND-NATIONAL CAPITAL PARK AND  
 PLANNING COMMISSION BY AN ACT OF THE GENERAL ASSEMBLY OF  
 THE STATE OF MARYLAND, SESSION OF 1933, CHAPTER 505, SECTION 33;  
 AND THAT M.N.C.P.&P.C. MONUMENTS SHOWN THUS:  ARE  
 IN PLACE WHERE INDICATED.  
 DATE JULY 24, 1939.

*Irwin I. Kaplan*  
 IRWIN I. KAPLAN, ENGINEER

MARYLAND-NATIONAL CAPITAL PARK & PLANNING COMMISSION  
 APPROVED: JULY 19, 1939 *Geo. N. Palmer*  
 DATE CHAIRMAN  
*Irving C. Root* *John Hampton*  
 CHIEF ENGINEER SECRETARY  
 M.N.C.P.&P.C. RECORD FILE No. 1098

WASHINGTON SUBURBAN SANITARY DISTRICT  
 APPROVED: JULY 24, 1939  
 AS TO SUITABILITY FOR SEWER AND WATER  
*Harry B. Shaw*  
 DEPUTY CHIEF ENGINEER

RECORDED: 8-3-39  
 PLAT BOOK: 18  
 PLAT NO: 1139



N-49  
 N-49