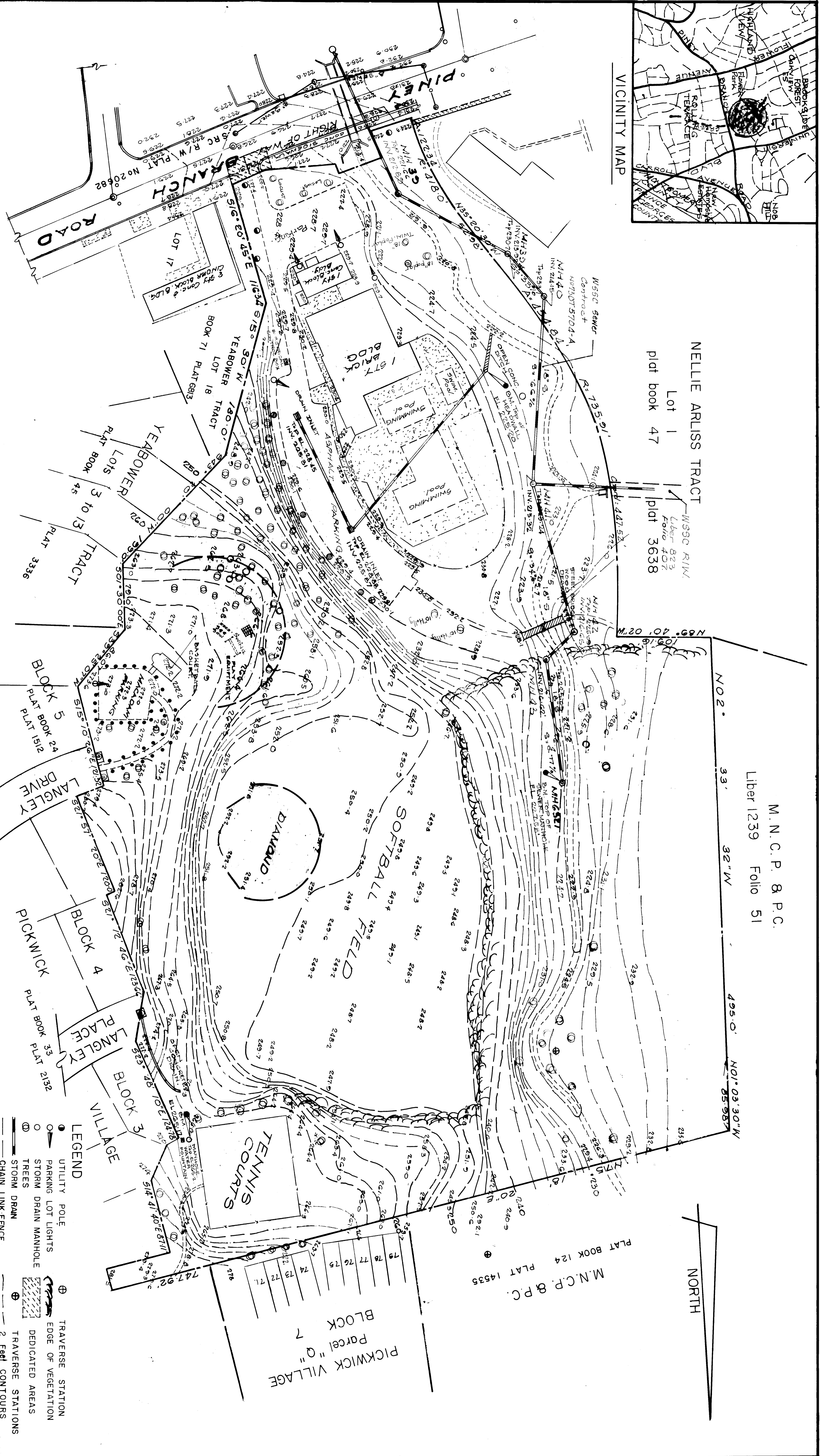


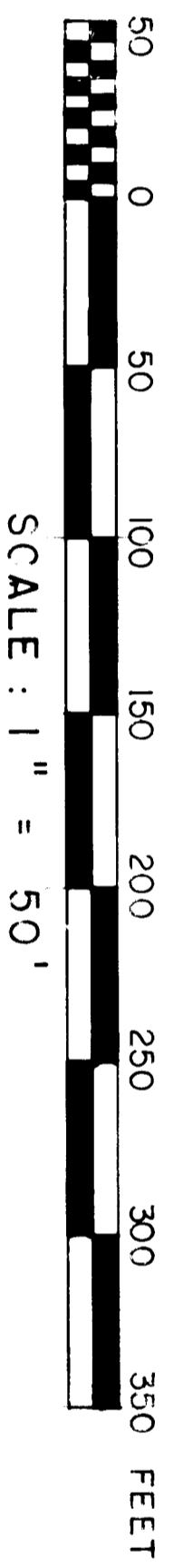
VICINITY MAP



NELLIE ARLISS TRACT
 Lot 1
 plat book 47
 plat 3638

M. N. C. P. & P. C.
 Liber 1239 Folio 51

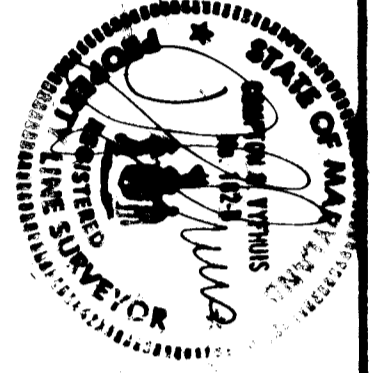
NORTH



- LEGEND**
- UTILITY POLE
 - PARKING LOT LIGHTS
 - STORM DRAIN MANHOLE
 - TREES
 - STORM DRAIN
 - CHAIN LINK FENCE
 - PROPERTY LINE
 - STREAM BED
 - INLET
 - BENCH MARK
 - SEWER MANHOLE
 - WOOD GUARD POST
 - ⊕ TRAVERSE STATION
 - ⊕ EDGE OF VEGETATION
 - ⊕ DEDICATED AREAS
 - ⊕ TRAVERSE STATIONS
 - ⊕ 2 Feet CONTOURS

PREPARED BY:
 VYFHUIS & ASSOCIATES
 8725 FIRST AVENUE
 SILVER SPRING, MD 20910
 Tel. 301 - 585 7754

SURVEYED BY: C. VYFHUIS
 DRAWN BY: H. BOYCE
 CHECKED BY: C. THOMAS
 DATE: 5-8-89



LONG BRANCH LOCAL PARK

PREPARED FOR
 M. N. C. P. & P. C.
 8787 GEORGIA AVENUE
 SILVER SPRING, MD 20910

TOPOGRAPHIC PLAN
 LONG BRANCH PARKWAY RECREATION AREA
 WHEATON 13, ELECTION DISTRICT
 MONTGOMERY COUNTY, MARYLAND