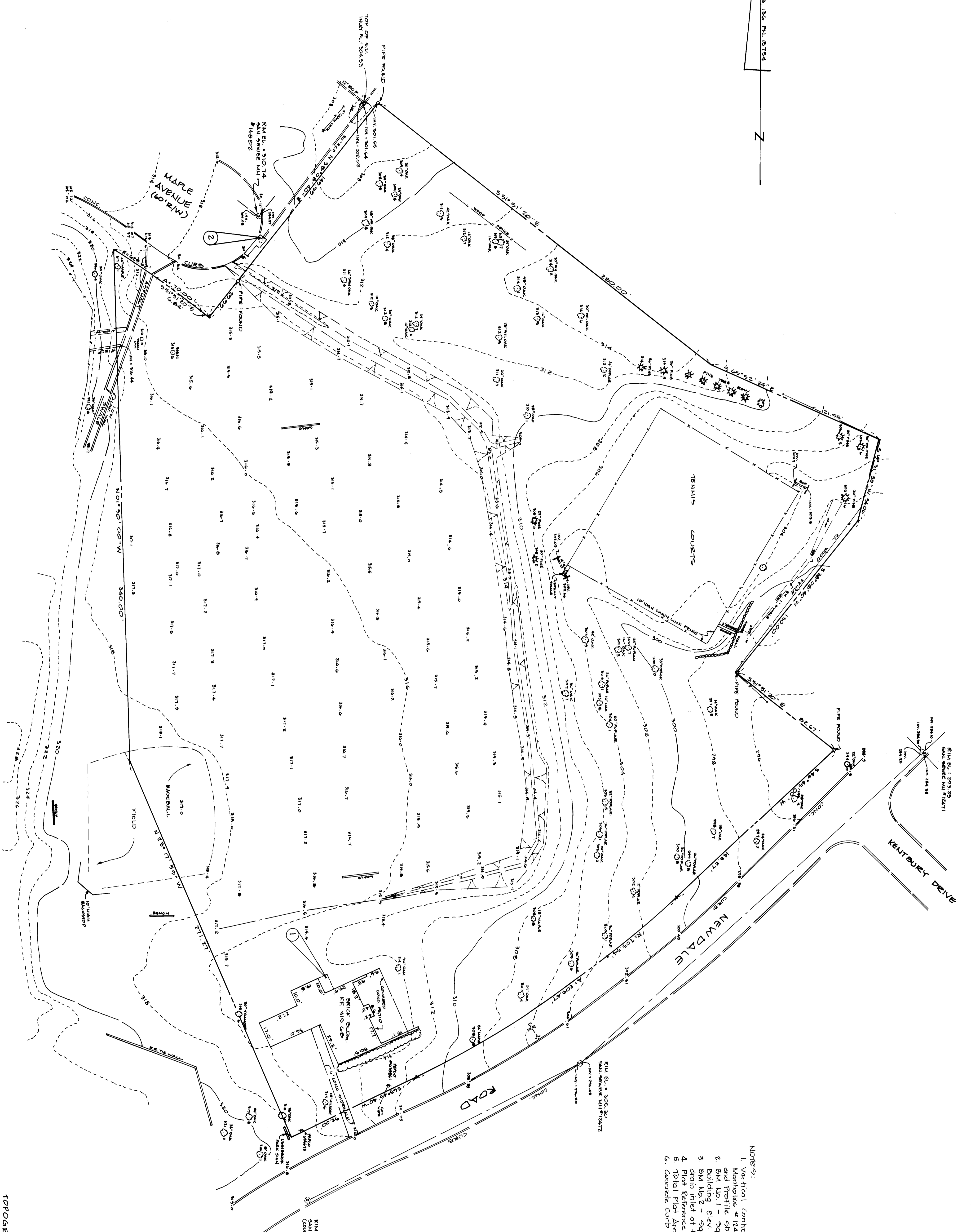
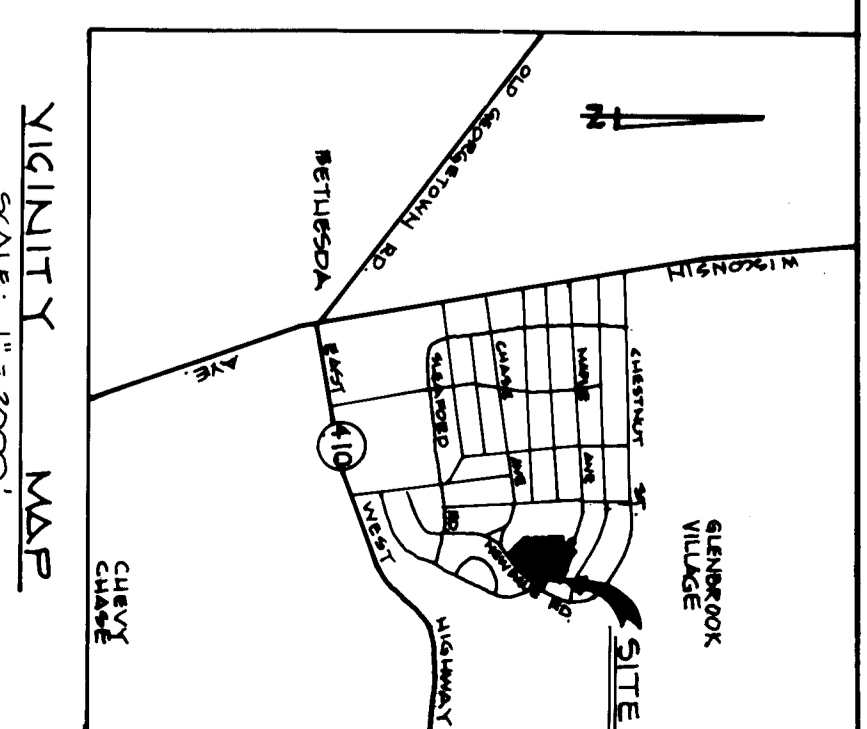


PREPARED BY:  
PAUL K. MILLER & ASSOCIATES  
LAND SURVEYING, PLANNING  
AND ENGINEERING  
SEVEN PINE ROAD  
MOUNTAIN VIEW, MARYLAND  
(301) 447-1322

KILOMETER MARKING: P.B. 136, P.L. 6154  
N



- NOTES:
1. Vertical Control was based on Plan Elevations of Existing Saker Markers # 12471, # 12472 and # 12482 as shown on W-555 Plan and Profile sheets 210NW 4.
  2. BM No. 1 - Square Cut in concrete Rd north side of brick building Elev. = 315.78
  3. BM No. 2 - Square Cut in top of northwest corner of storm drain inlet at face of curb Elev. = 310.05
  4. Total Elevation = 4.9715 Acres = Plat No. 19754
  5. Total Area = 4.9715 Acres = Plat No. 19754
  6. Concrete Curb is rolled mechanical curb.



TOPOGRAPHIC SURVEY  
LYNNBROOK LOCAL PARK  
BETHESDA ELECTION DISTRICT NO. 7  
MONTGOMERY COUNTY, MARYLAND  
FEBRUARY, 1989  
SCALE: 1" = 30'  
M3814