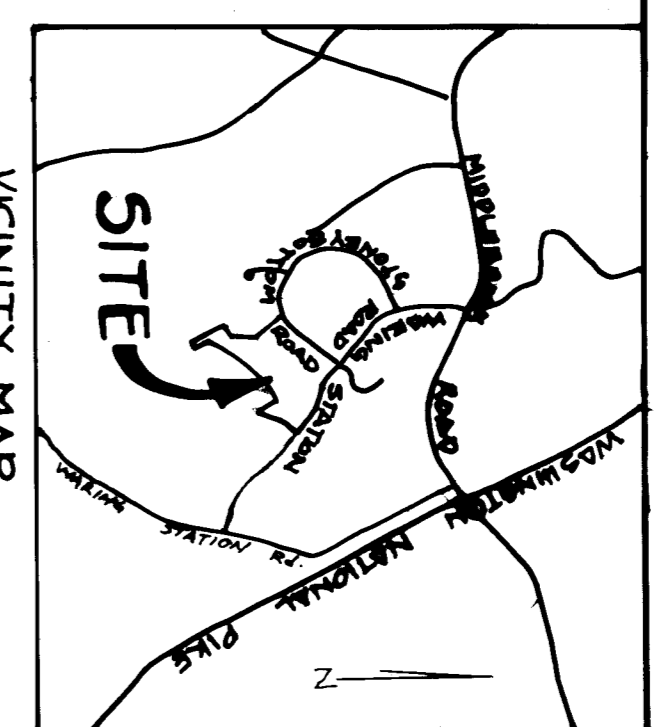
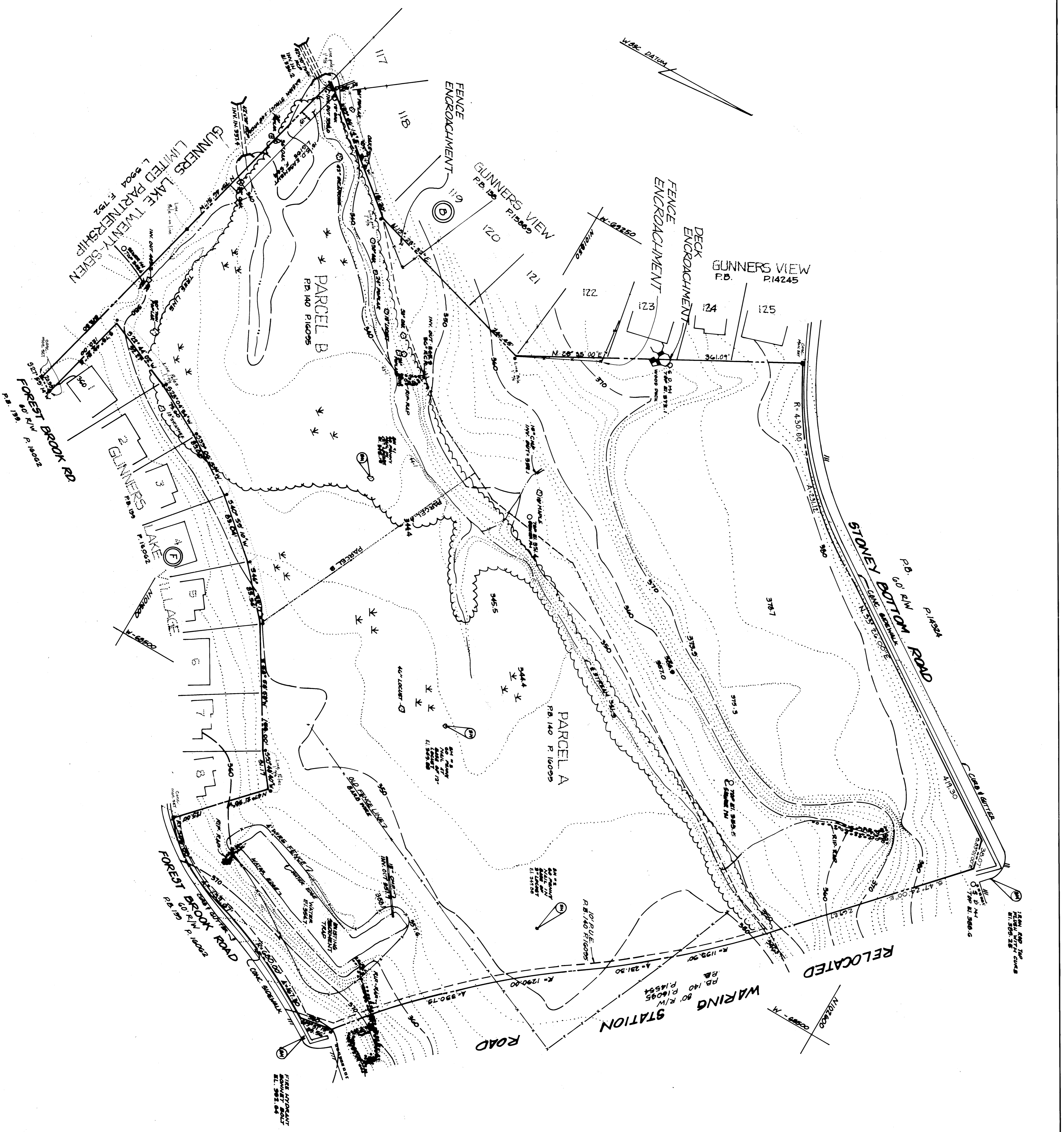


AL BROWN SURVEYS, INC.
 7305 MINK HOLLOW ROAD
 HIGHLAND MD 20777
 (301) 854-0913



PLAT OF TOPOGRAPHIC SURVEY AND MONUMENTATION
MIDDLEBROOK ROAD LOCAL PARK
 GUNNERSBURG (3rd) ELECTION DISTRICT
 MONTGOMERY COUNTY, MARYLAND
WARING STATION

DATE	JUNE, 88	SHEET	1 OF 1
DRAWN	LMP		
CHECKED	AB		
SCALE	1" = 50'		