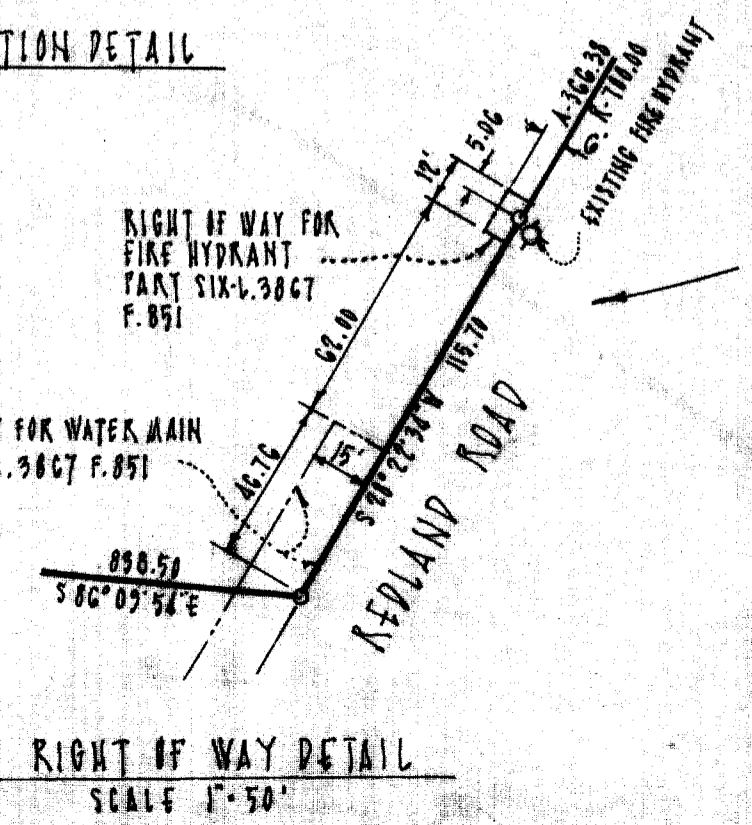
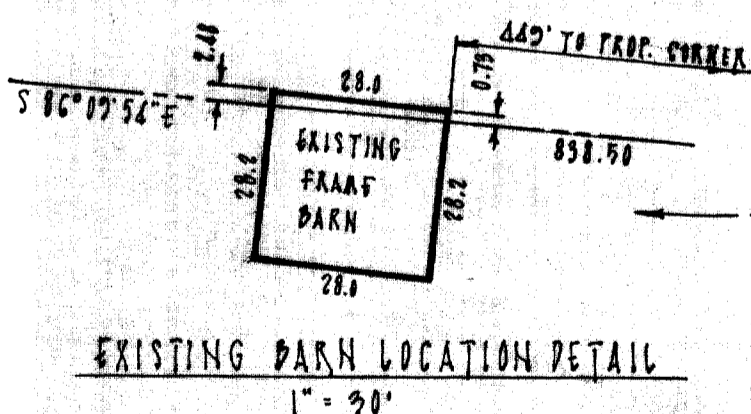
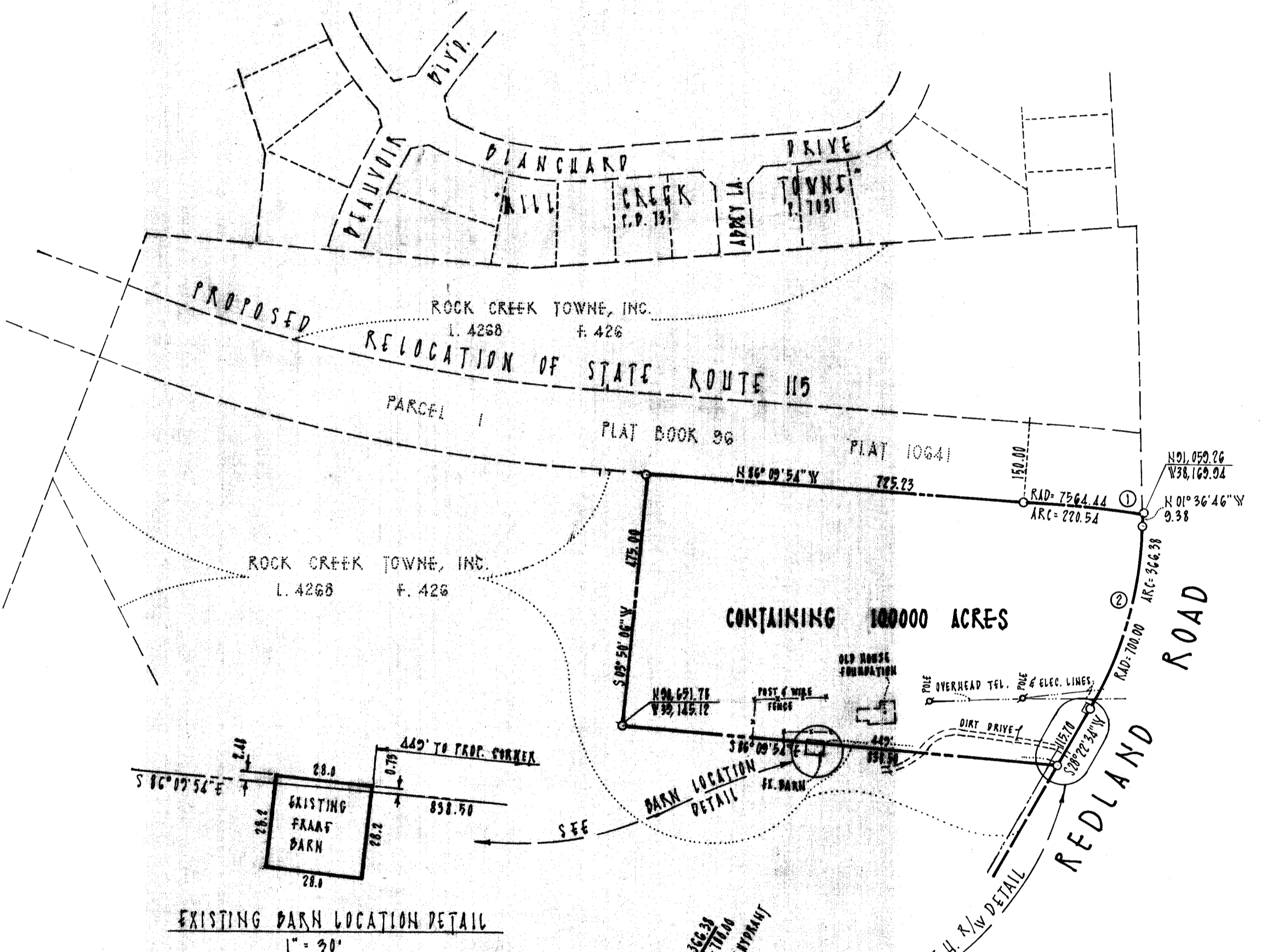


SURVEYOR'S CERTIFICATE

I HEREBY CERTIFY THAT THIS PLAN IS CORRECT AND THAT IT IS PART OF A CONVEYANCE FROM LILLIAN TURNER, ET AL, TO ROCK CREEK TOWNE, INC., A MARYLAND CORPORATION, BY DEED DATED AUGUST 9, 1972 AND RECORDED IN LIBER 4268 AT FOLIO 426 AMONG THE LAND RECORDS OF MONTGOMERY COUNTY, MARYLAND.

DATE October 24, 1974 *James M. Fowler*
 JAMES M. FOWLER
 REGISTERED LAND SURVEYOR
 MD. NO. 2214



| CURVE DATA | | | | | |
|------------|---------|-------------|--------|--------|-----------------|
| NO. | RADIUS | △ | ARC | CHORD | BEARING |
| 1 | 7564.44 | 1° 40' 14" | 220.54 | 220.53 | N 85° 19' 47" W |
| 2 | 700.00 | 29° 59' 20" | 366.38 | 362.22 | N 19° 22' 54" E |

MARYLAND NATIONAL CAPITAL PARK & PLANNING COMMISSION
 MONTGOMERY COUNTY PLANNING BOARD

APPROVED _____
 CHAIRMAN SECRETARY - TREASURER

M.N.C.P. & P.C. RECORD FILE NO.

PLAT OF SURVEY
REDLAND LOCAL PARK
 ROCK CREEK TOWNE, INC. PROPERTY
 ELECTION DISTRICT NO. 9
 MONTGOMERY COUNTY, MARYLAND
 SCALE: 1" = 200' OCTOBER, 1974

PREPARED BY
 OFFICE OF
 JAMES M. FOWLER
 27 W. JEFFERSON ST., ROCK., MD.
 PO. 2-2377