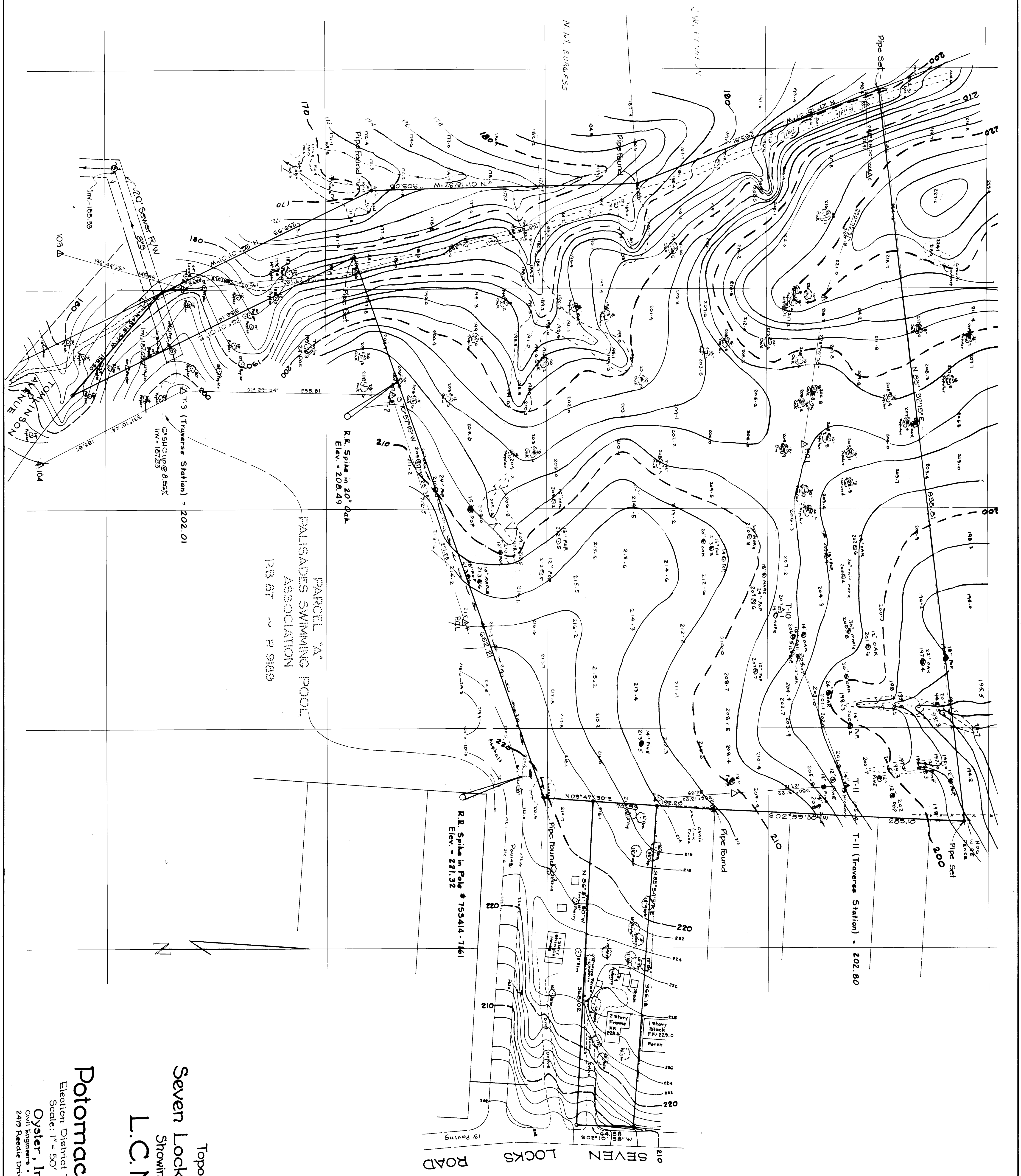


Date: 12/13/73
 Drawn: J.M.
 Checked: J.M.
 Project: 100



B.M. #6 N&W in PEPCO Pole
 #69082 on Seven Locks Road
 Elev. = 199.97

Topographic Survey
 Seven Locks Road Local Park
 Showing Property of
L.C. Nickerson
 and
 Parcel 'A'
Potomac Racquet Club

Election District 7 ~ Montgomery County, Maryland
 Scale: 1" = 50'
 Oyster, Imus & Associates, Inc.
 Civil Engineers • Land Planners • Land Surveyors
 2419 Reister Drive • Wilketon, Maryland • 246-2011