

DATE	REVISION

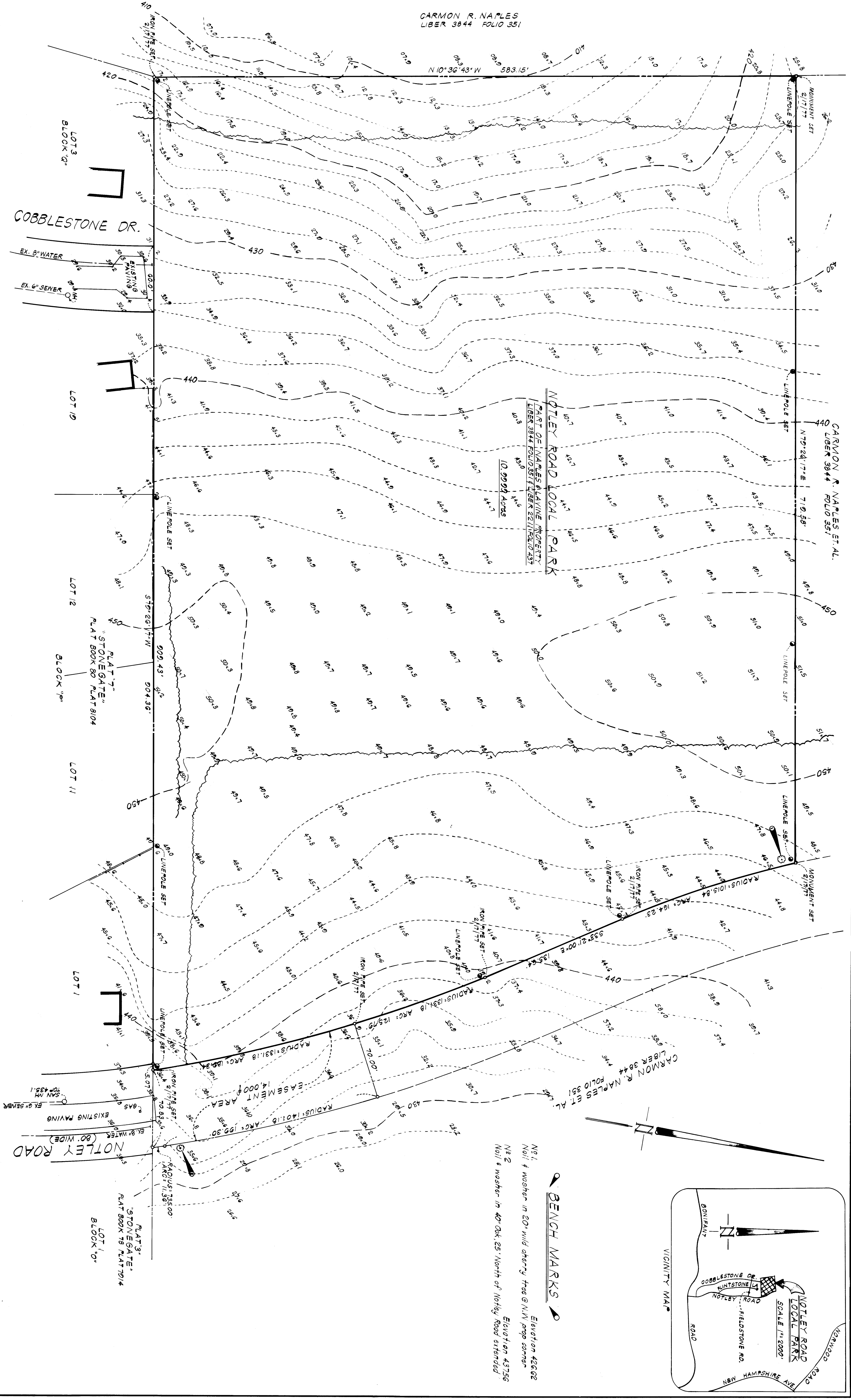
DEVELOPER:

SEVBOLT GORE NEWQUIST & BERLINSKY
 CIVIL ENGINEERS & LAND SURVEYORS
 1111 MOUNTAIN STREET
 SILVER SPRING, MARYLAND 20910

598-1111
 598-1112

TOPOGRAPHIC SURVEY
 NOTLEY ROAD LOCAL PARK
 COLESVILLE ELECTION DISTRICT 5
 MONTGOMERY COUNTY, MARYLAND

DRAWING NO.	SCALE	S. G. N. B.
1051	1"=40'	FILE NO.
ISSUED	DATE	



CARMON R. NAPLES
 LIBER 3844 FOLIO 351

N 10° 30' 43" W 583.15'

NOTLEY ROAD LOCAL PARK
 PART OF NAPLES PLANNED PROPERTY
 LIBER 3844 FOLIO 351
 10.9928 ACRES

BENCH MARKS

BM 1
 Nail & washer in 50' wide openy tree @ N.W. page corner
 Elevation 42602

BM 2
 Nail & washer in 40' x 25' North of Notley Road extended
 Elevation 43756

