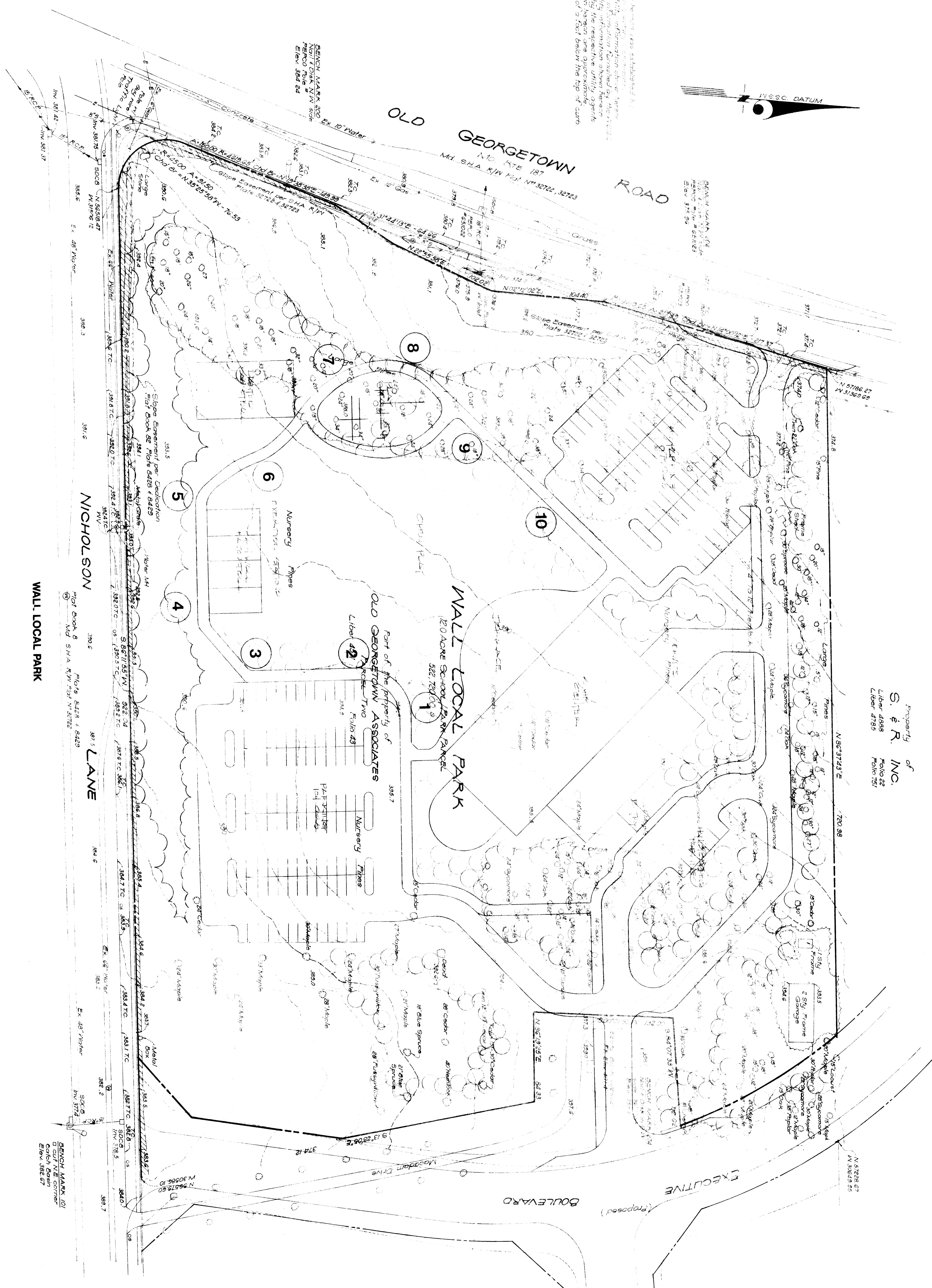
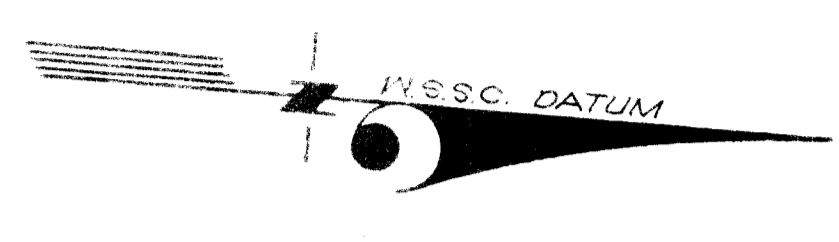


- LEGEND**
- ① Storm Drain
  - ② Sewer (Proposed)
  - ③ Top of Curb
  - ④ Water Valve
  - ⑤ Electric Line
  - ⑥ Storm Drain Catch Basin
  - ⑦ Fire Alarm
  - ⑧ Street Sign

**NOTES:**

1. The existing and proposed storm drains were established by the existing 2" storm drain and sewer lines.
2. Existing fire alarm, storm drain and sewer lines are shown as they exist.
3. The storm drain system shown is for the proposed building.
4. The location of all underground utilities shown are approximate.
5. Flow lines for all catch and gutter are 1/2" below the top of curb.
6. Contour interval is two (2) feet.



Property of  
**S. & R. Inc.**  
 Liber 4388 Folio 22  
 Liber 4795 Folio 751

RESIDUE OF PARCEL T  
 Liber 4571