

SURVEYORS CERTIFICATE

RIGHT-OF-WAY AND LOT LINES SHOWN HEREON WERE OBTAINED FROM THE LAND RECORDS OF MONTGOMERY COUNTY, MD. AND ARE SHOWN IN THE APPROXIMATE POSITION. NO PROPERTY LINE SURVEY WAS MADE AT THIS TIME. SEE MAP OF SILVER SPRING PARK RECORDED AMONG SAID LAND RECORDS IN PLATBOOK 1 AS PLAT 68. THE TOPOGRAPHIC SURVEY INDICATED HEREON REPRESENTS AN ACTUAL LAND SURVEY PERFORMED BY TRANSIT-TAPE AND IS ACCURATE TO THE BEST OF MY KNOWLEDGE AND BELIEF AND IS REFERENCED TO THE W.C. DATUM.

Monroe G. Chew, Jr.
 MONROE G. CHEW, JR.
 AUGUST 25, 1992
 PROPERTY LINE SURVEYOR
 MARYLAND NO. PLS # 21

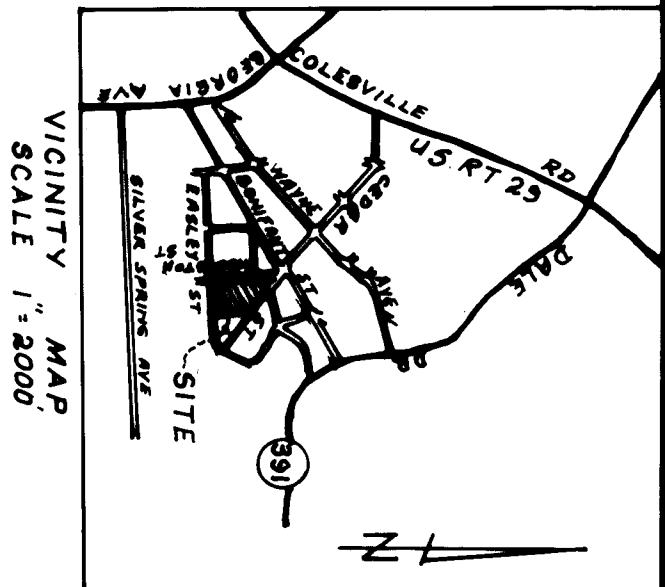
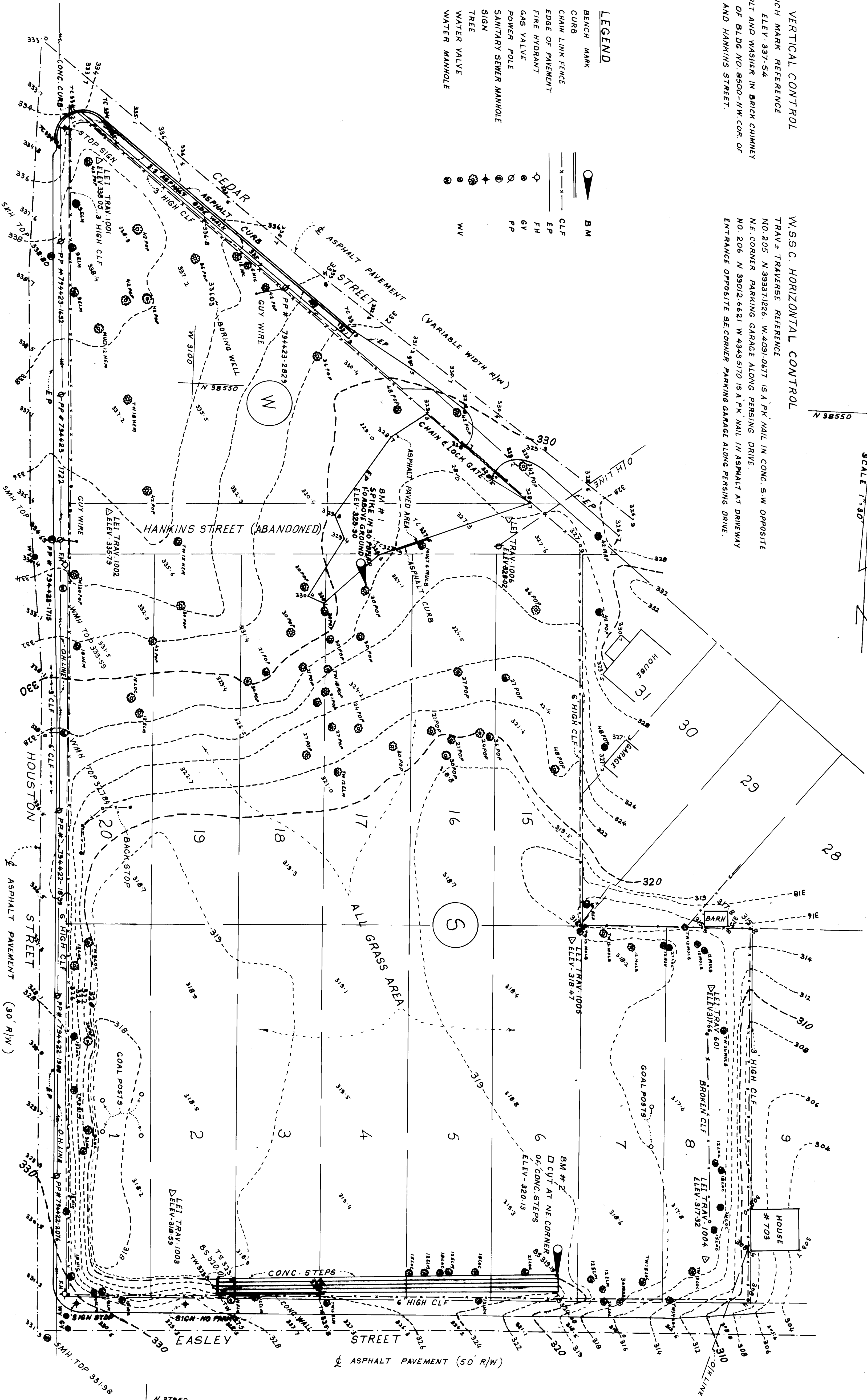
W.S.S.C. VERTICAL CONTROL

BM BENCH MARK REFERENCE
 NO. 1009 ELEV. 337.54
 BRASS BOLT AND WASHER IN BRICK CHIMNEY
 ON S SIDE OF BLDG NO. 8500-NW COR. OF
 HOUSTON AND HANKINS STREET.

W.S.S.C. HORIZONTAL CONTROL

TRAV = TRAVERSE REFERENCE
 NO. 205 N 39337128 W 4201 0877 IS A PK. NAIL IN CONC. S.W. OPPOSITE
 N.E. CORNER PARKING GARAGE ALONG PERSHING DRIVE.
 NO. 208 N 39012 6481 W 4345370 IS A PK. NAIL IN ASPHALT AT DRIVEWAY
 ENTRANCE OPPOSITE SE CORNER PARKING GARAGE ALONG PERSHING DRIVE.

- LEGEND**
- BM BENCH MARK
 - CURB CURB
 - CHAIN LINK FENCE CHAIN LINK FENCE
 - EDGE OF PAVEMENT EDGE OF PAVEMENT
 - FIRE HYDRANT FIRE HYDRANT
 - GAS VALVE GAS VALVE
 - POWER POLE POWER POLE
 - SANITARY SEWER MANHOLE SANITARY SEWER MANHOLE
 - SIGN SIGN
 - TREE TREE
 - WATER VALVE WATER VALVE
 - WV WATER MANHOLE



REVISIONS		
NO.	DESCRIPTION	DATE

TOPOGRAPHIC SURVEY
BULLIS LOCAL PARK
 WHEATON ELECTION DISTRICT NO. 13
 MONTGOMERY COUNTY, MARYLAND

LARSEN ENGINEERS INC.
 ENGINEERS ARCHITECTS SURVEYORS
 5000 SUNNYSIDE AVENUE, BELTSVILLE, MD 20705 (301) 595-4600

DRAWN HM
 CHECKED MGC
 DATE 7-16-92
 DWG. NO. 9201-4
 SHEET NO. 10/11

TS. 046