

SURVEYORS' CERTIFICATE

RIGHT-OF-WAY AND LOT LINES SHOWN HEREON WERE OBTAINED FROM THE LAND RECORDS OF MONTGOMERY COUNTY, MD. AND ARE SHOWN IN THE APPROXIMATE POSITION. NO PROPERTY LINE SURVEY WAS MADE AT THIS TIME. SEE MAP OF SILVER SPRING PARK RECORDED AMONG SAID LAND RECORDS IN PLATBOOK 1 AS PLAT 68. THE TOPOGRAPHIC SURVEY INDICATED HEREON REPRESENTS AN ACTUAL LAND SURVEY PERFORMED BY TRANSIT TAPE AND IS ACCURATE TO THE BEST OF MY KNOWLEDGE AND BELIEF AND IS REFERENCED TO THE BEST OF

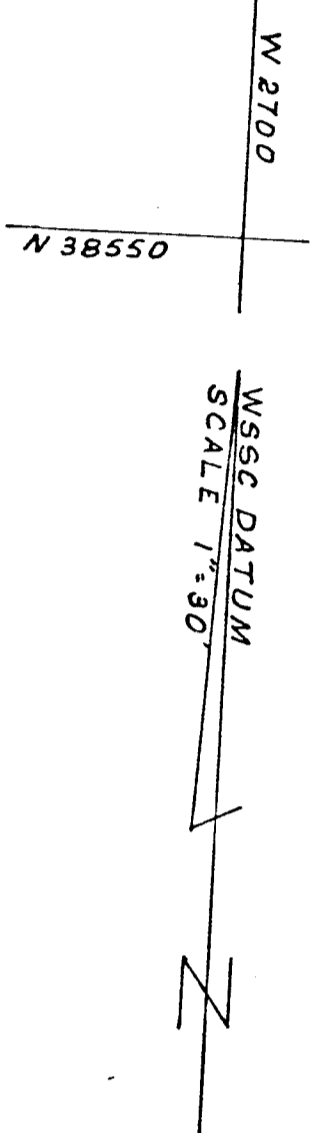
M. J. Jones
 MONTGOMERY COUNTY, MARYLAND
 AUGUST 25, 1983
 PROPERTY LINE SURVEYOR
 MARYLAND NO. PLS # 21

W.S.S.C. VERTICAL CONTROL

B.M. BENCH MARK REFERENCE
 NO. 1009 ELEV. 337.54
 BRASS BOLT AND WASHER IN BRICK CHIMNEY
 ON S. SIDE OF BLDG. NO. 8500-NW COR. OF
 HOUSTON AND HANNAH STREETS.

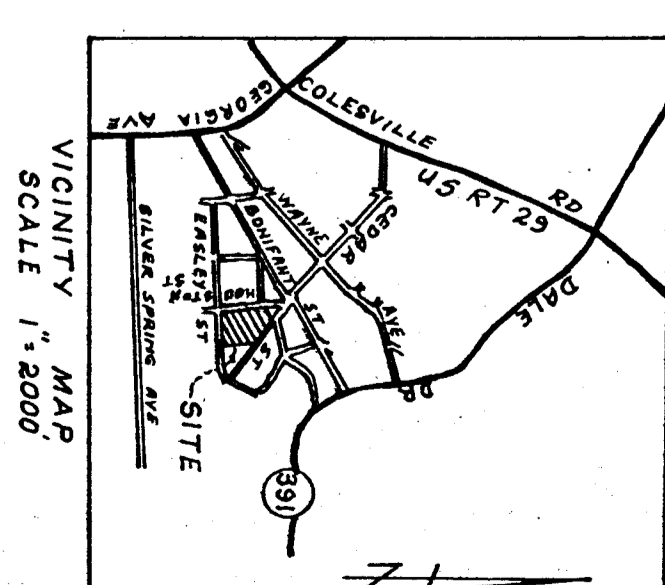
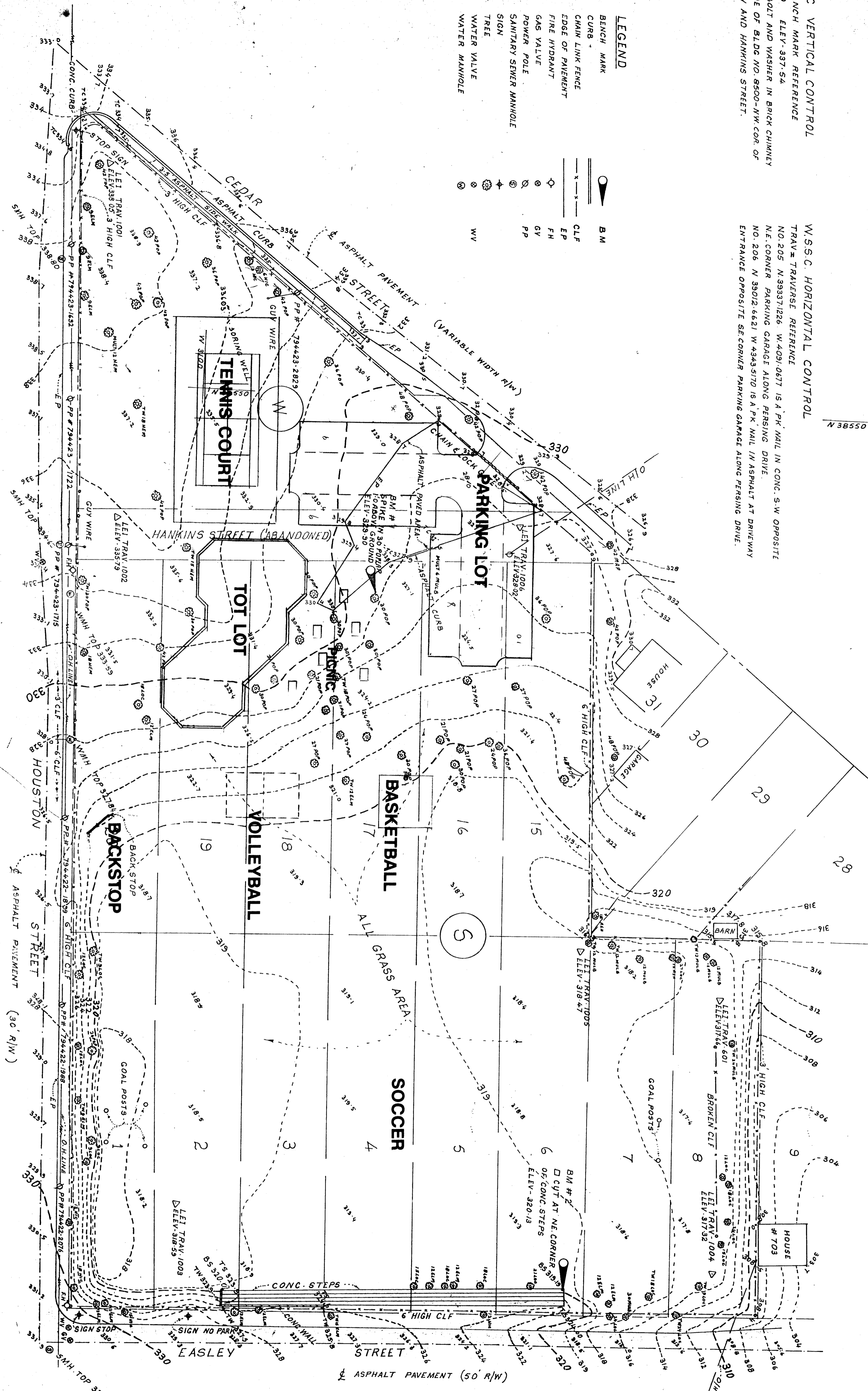
W.S.S.C. HORIZONTAL CONTROL

TRAV. TRAVERSE REFERENCE
 NO. 205 N 393371256 W 40910877 15.4 PK. NAIL IN CONC. SW OPPOSITE
 N.E. CORNER PARKING GARAGE ALONG PENSING DRIVE
 NO. 206 N 390124621 W 49353170 18.4 PK. NAIL IN ASPHALT AT DRIVEWAY
 ENTRANCE OPPOSITE SE CORNER PARKING GARAGE ALONG PENSING DRIVE.



LEGEND

- B.M. BENCH MARK
- CURB
- CHAIN LINK FENCE
- EDGE OF PAVEMENT
- FIRE HYDRANT
- GAS VALVE
- POWER POLE
- SANITARY SEWER MANHOLE
- SIGN
- TREE
- WATER VALVE
- WATER MANHOLE



TS. 046

TOPOGRAPHIC SURVEY
BULLIS LOCAL PARK
 WHEATON ELECTION DISTRICT NO. 13
 MONTGOMERY COUNTY, MARYLAND

LARSEN ENGINEERS INC.
 ENGINEERS ARCHITECTS SURVEYORS
 5000 SUNNYSIDE AVENUE, BELTSVILLE, MD 20705 (301) 595-4800

REVISIONS		
NO.	DESCRIPTION	DATE

DRAWN: H.M.
 CHECKED: M.S.C.
 DATE: 7-16-83
 DWG. NO.: 92014
 SHEET NO.: 101