

**SURVEYOR'S CERTIFICATE**

I HEREBY CERTIFY THAT THE PLAN SHOWN HEREON IS CORRECT; THAT IT IS A SURVEY OF PART OF THAT LAND CONVEYED BY MISSILE SITES, INC., A DELAWARE CORPORATION, AND SAMUEL N. ZAPPAS, INC., A DELAWARE CORPORATION, TO THE DEVELOPMENT CORPORATION, A MARYLAND CORPORATION, BY DEED DATED JANUARY 5, 1962 AND RECORDED AMONG THE LAND RECORDS OF MONTGOMERY COUNTY, MARYLAND IN LIBER 2937 AT FOLIO 129 AND PART OF THAT LAND CONVEYED BY CLAUDE W. OWEN, ET UX, TO CHARLES M. COUNCIL, JR., BY DEED DATED MARCH 25, 1946 AND RECORDED AMONG THE ABOVE SAID LAND RECORDS IN LIBER 1004 AT FOLIO 351 AND THAT CONCRETE MONUMENTS MARKED THUS AND IRON PIPES MARKED THUS ARE IN PLACE AS INDICATED HEREON.

NO.	NORTH	WEST	NORTH	WEST	NO.
1	64109.17	56435.50	64104.91	56323.42	2
3	64687.02	56672.94	64706.54	56702.18	4
5	64711.77	56775.85	64755.62	56975.96	6
7	64866.65	57196.94	64929.36	57269.08	8
9	64787.99	57262.42	64570.84	57216.70	10
11	64570.46	57182.38	64520.32	56934.62	12
13	64432.68	57170.06	64258.36	57133.00	14
15	64152.60	57042.27	64079.78	56959.59	16
17	64010.92	56930.79	63972.70	56903.46	18
19	63915.90	56899.59	63908.18	56870.30	20
21	63845.50	56892.54	63735.83	56856.53	22
23	63676.82	56875.75	63693.14	56848.40	24
25	64755.22	56975.34			

W.S.S.C. COORDINATE TABLE

*Eldon E. Snider*  
 ELDON E. SNIDER  
 REGISTERED LAND SURVEYOR  
 MD. # 3952

DATE: SEPTEMBER 19, 1966

1669/298

1002/37

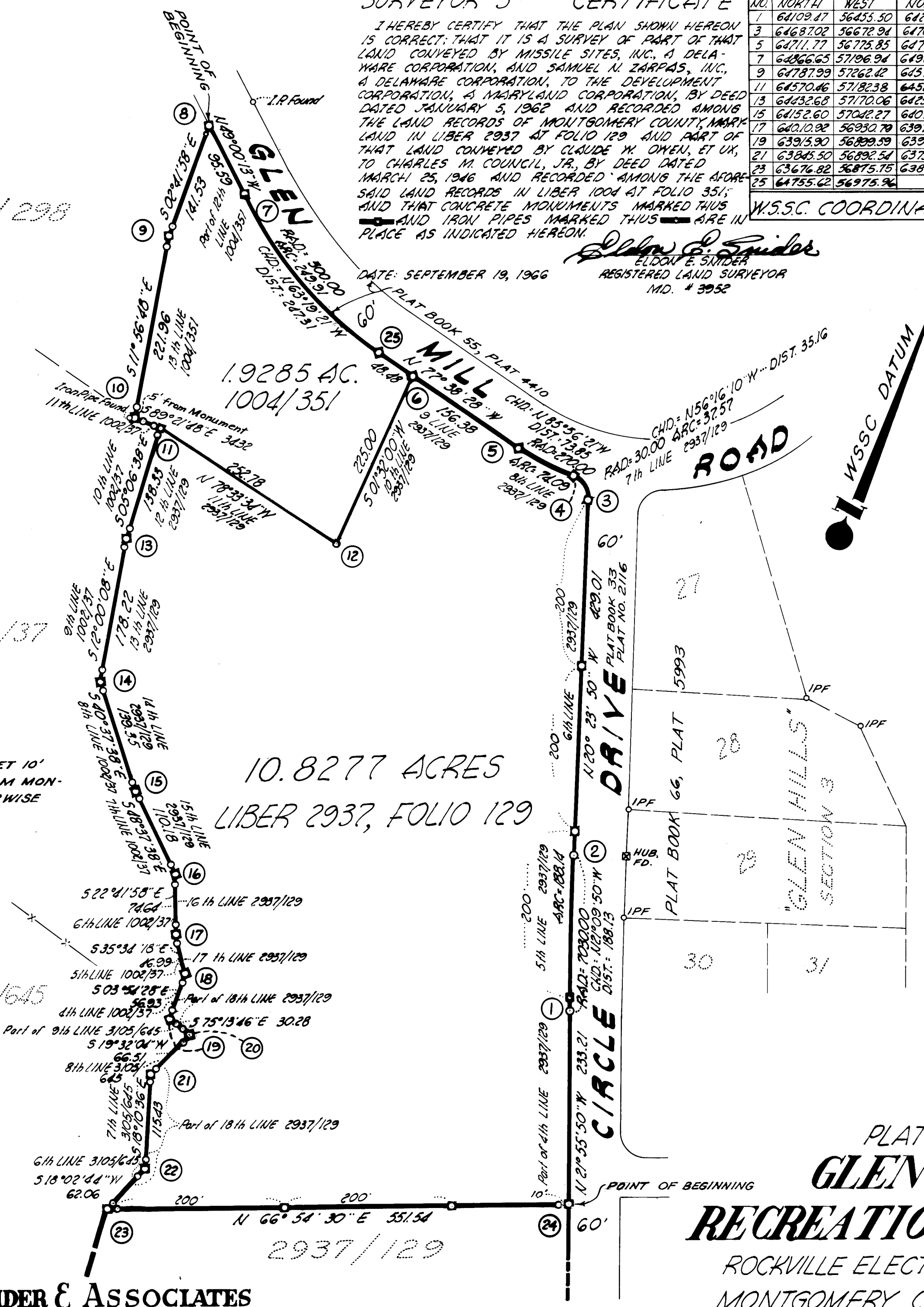
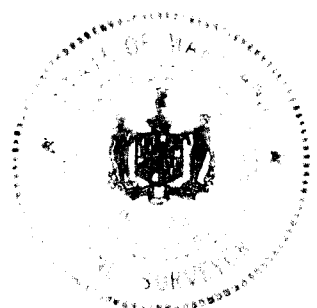
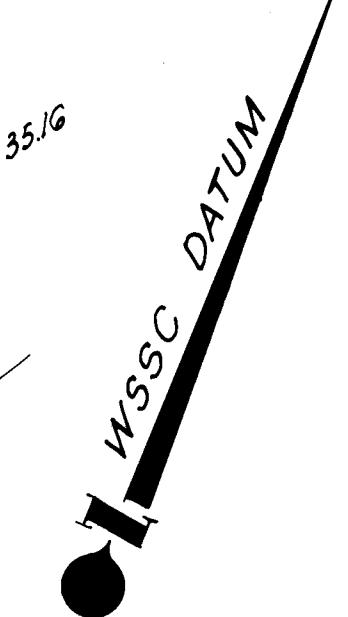
3105/645

1.9285 AC.  
 1004/351

10.8277 ACRES  
 LIBER 2937, FOLIO 129

2937/129

NOTE:  
 ALL LINE PIPES SET 10'  
 EACH SIDE ON LINE FROM MON-  
 UMENTS, UNLESS OTHERWISE  
 SHOWN.



PLAT OF SURVEY  
**GLEN HILLS**  
**RECREATION CENTER**  
 ROCKVILLE ELECTION DISTRICT NO. 4  
 MONTGOMERY COUNTY, MARYLAND  
 SCALE: 1" = 100' W.S.S.C. HORIZONTAL DATUM  
 DEPARTMENT OF PARKS - THE MARYLAND -  
 NATIONAL CAPITAL PARK AND PLANNING COMMISSION

**ELDON E. SNIDER & ASSOCIATES**  
 LAND SURVEYORS  
 LAND PLANNING CONSULTANTS  
 215 N. FREDERICK AVE., GAITHERSBURG, MD. 20878