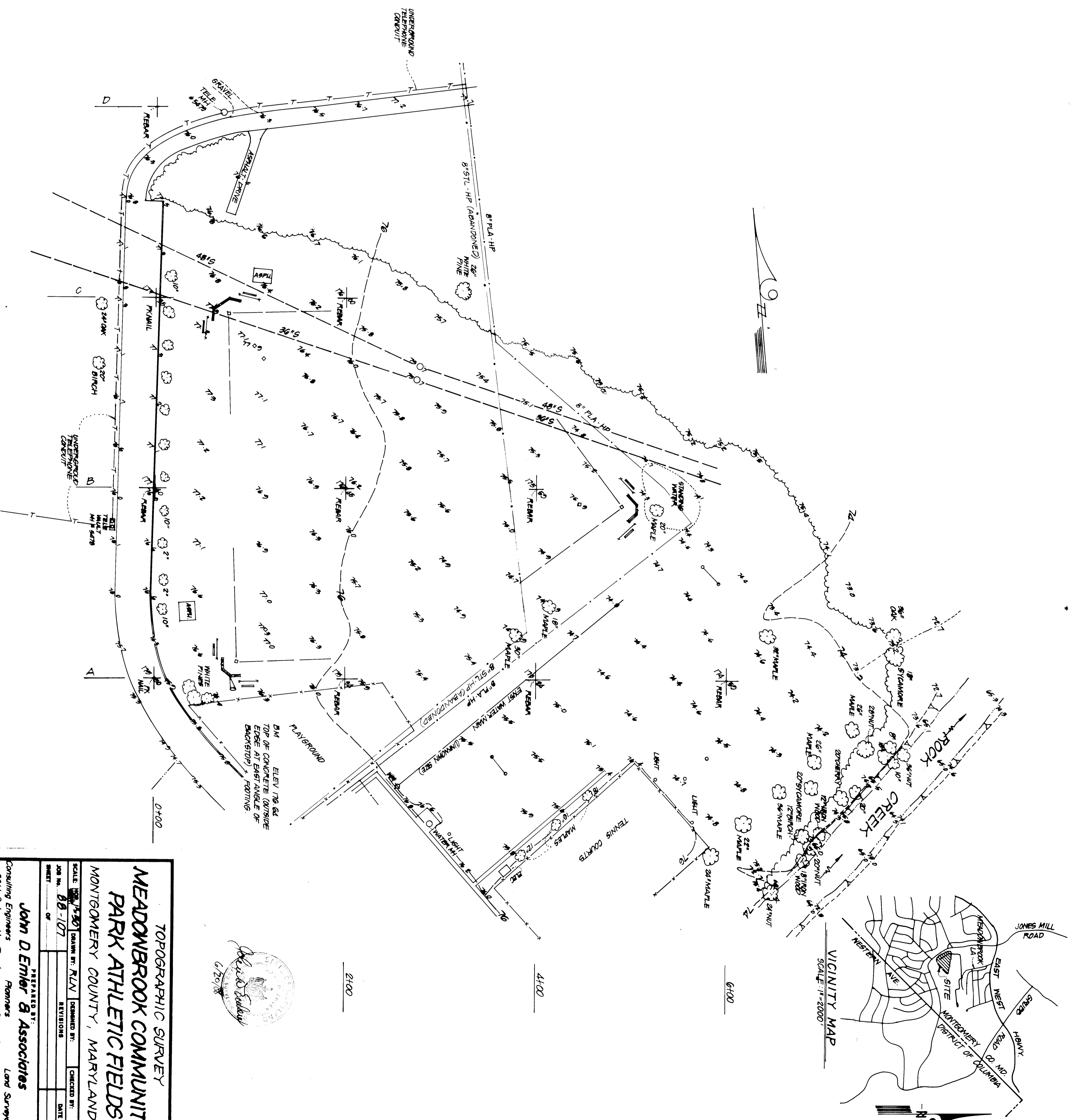


- NOTES
1. UTILITIES ARE SHOWN FROM PLANS SUBMITTED BY THE GAS CO., PERCO & TELEPHONE CO.
  2. LOCATION OF EXISTING SEWER MAINS ARE FROM CONSTRUCTION PLANS BY M.E.S.C.
  3. LOCATION OF UNDERGROUND POWER LINES & OTHER UTILITIES INSTALLED BY M.E.S.C. WERE NOT LOCATED
  4. ALL GRID POINTS ARE 200 FT. APART



**TOPOGRAPHIC SURVEY**  
**MEADOWBROOK COMMUNITY**  
**PARK ATHLETIC FIELDS**  
 MONTGOMERY COUNTY, MARYLAND

SCALE: 1" = 200'  
 JOB NO. 88-107  
 SHEET 1 OF 1

PREPARED BY: **John D. Emler & Associates**  
 Consulting Engineers  
 6811 Colesville Road  
 Silver Spring, Maryland

DRAWN BY: RLN  
 CHECKED BY: [ ]  
 DATE: [ ]

REVISIONS: [ ]

