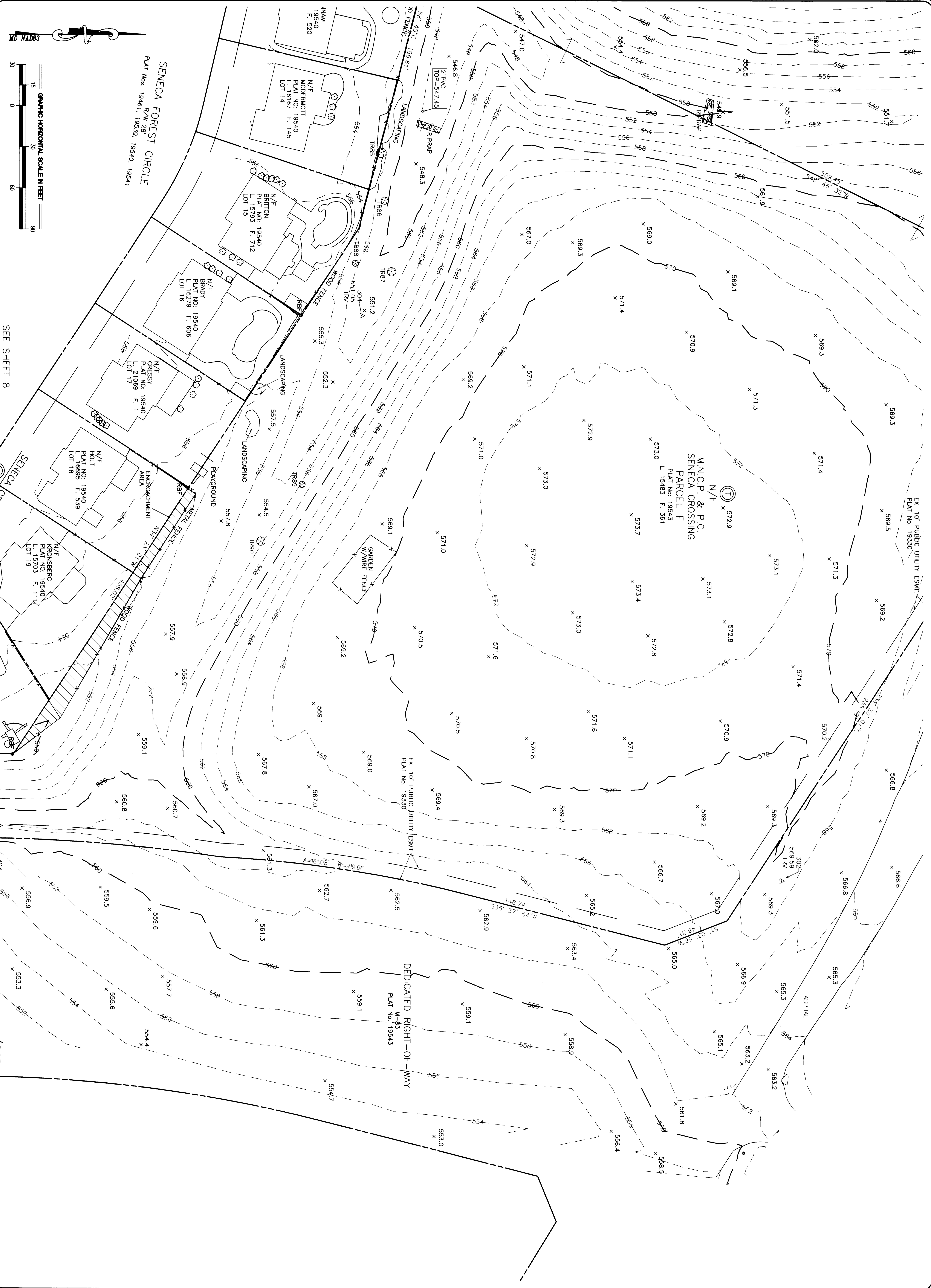


SENECA FOREST CIRCLE
 PLAT NOS. 19461, 19539, 19540, 19541
 R/W 28'

SEE SHEET 8



**TOPOGRAPHIC SURVEY
 OF
 SENECA CROSSING PARK**

SENECA CROSSING
 PARCEL E, BLOCK A, PARCEL E, BLOCK T, & PARCEL F, BLOCK T
 PLAT NOS. 19462, 19463, 19543
 L. 15483 F. 361
 GAITHERSBURG (9TH) ELECTION DISTRICT
 MONTGOMERY COUNTY, MARYLAND

REVISIONS	DATE

BURGESS & NIPLÉ
 3204 TOWER OAKS BOULEVARD, SUITE 200, ROCKVILLE, MD 20852
 PH. (301)468-9400 FAX (301)468-9669

DATE: October, 2009
 SCALE: 1"=30'
 DESIGN: [] DRAWN: BEE
 CHECK: [] CHECK: JBS
 PWC FN: []
 BANN P#: 48242 OF 8
 SHEET: 7