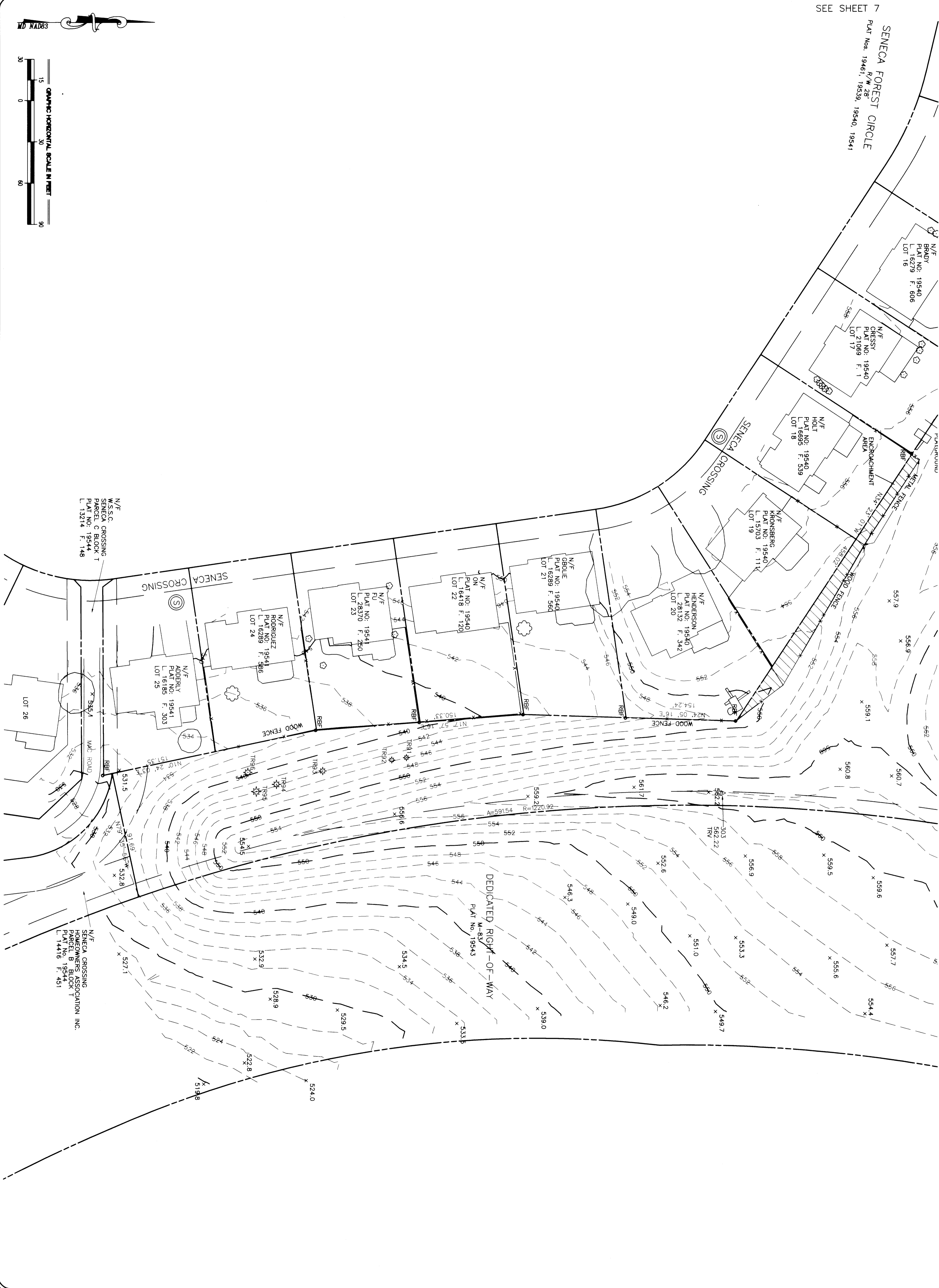
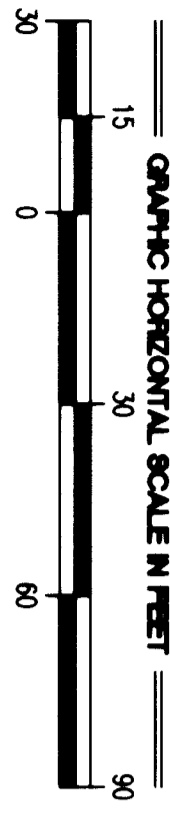


SEE SHEET 7

SENECA FOREST CIRCLE
PLAT Nos. 19461, 19539, 19540, 19541
R/W 28'



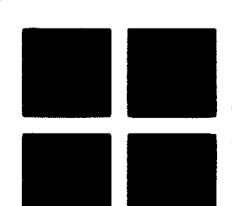
DATE:	October, 2009
SCALE:	1"=30'
DESIGN:	
CHECK:	
PWC FN:	
BAN FN:	
SHEET:	8 OF 8
BAN FN:	

**TOPOGRAPHIC SURVEY
OF
SENECA CROSSING PARK**

SENECA CROSSING
PARCEL E, BLOCK A, PARCEL E, BLOCK T, & PARCEL F, BLOCK T
PLAT Nos. 19462, 19463, 19543
L 15483 F. 381

GAITHERSBURG (8TH) ELECTION DISTRICT
MONTGOMERY COUNTY, MARYLAND

REVISIONS	DATE



BURGESS & NIPLE
3204 TOWER OAKS BOULEVARD, SUITE 200, ROCKVILLE, MD 20852
PH. (301)468-9400 FAX (301)468-9669