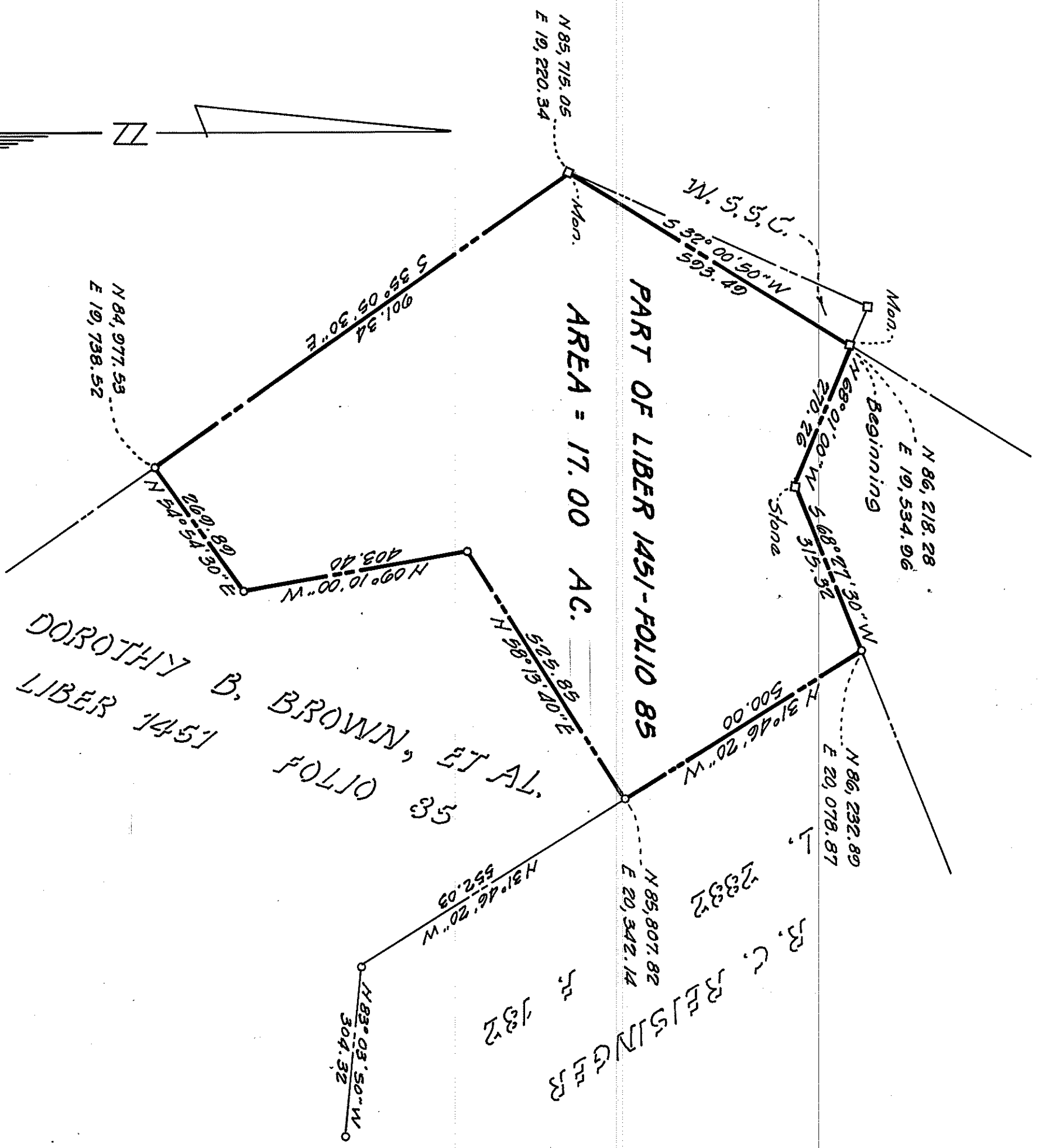


Plat of Survey
 Part of a Tract of Land Called
 SNOWDEN'S 3rd ADDITION TO HIS MANOR
 Vicinity of Burtonsville
 Montgomery County, Maryland
 June, 1965

Maddox & Hopkins, Inc.
 Engineers & Surveyors
 Silver Spring, Maryland



PART OF LIBER 1451-FOLIO 85
 AREA = 17.00 AC.

DOROTHY B. BROWN, ET AL.
 LIBER 1451 FOLIO 35

J. C. REISLYN GERS

Scale : 1" = 200'