

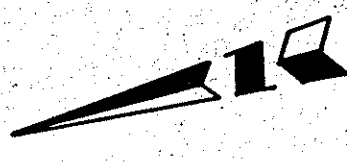
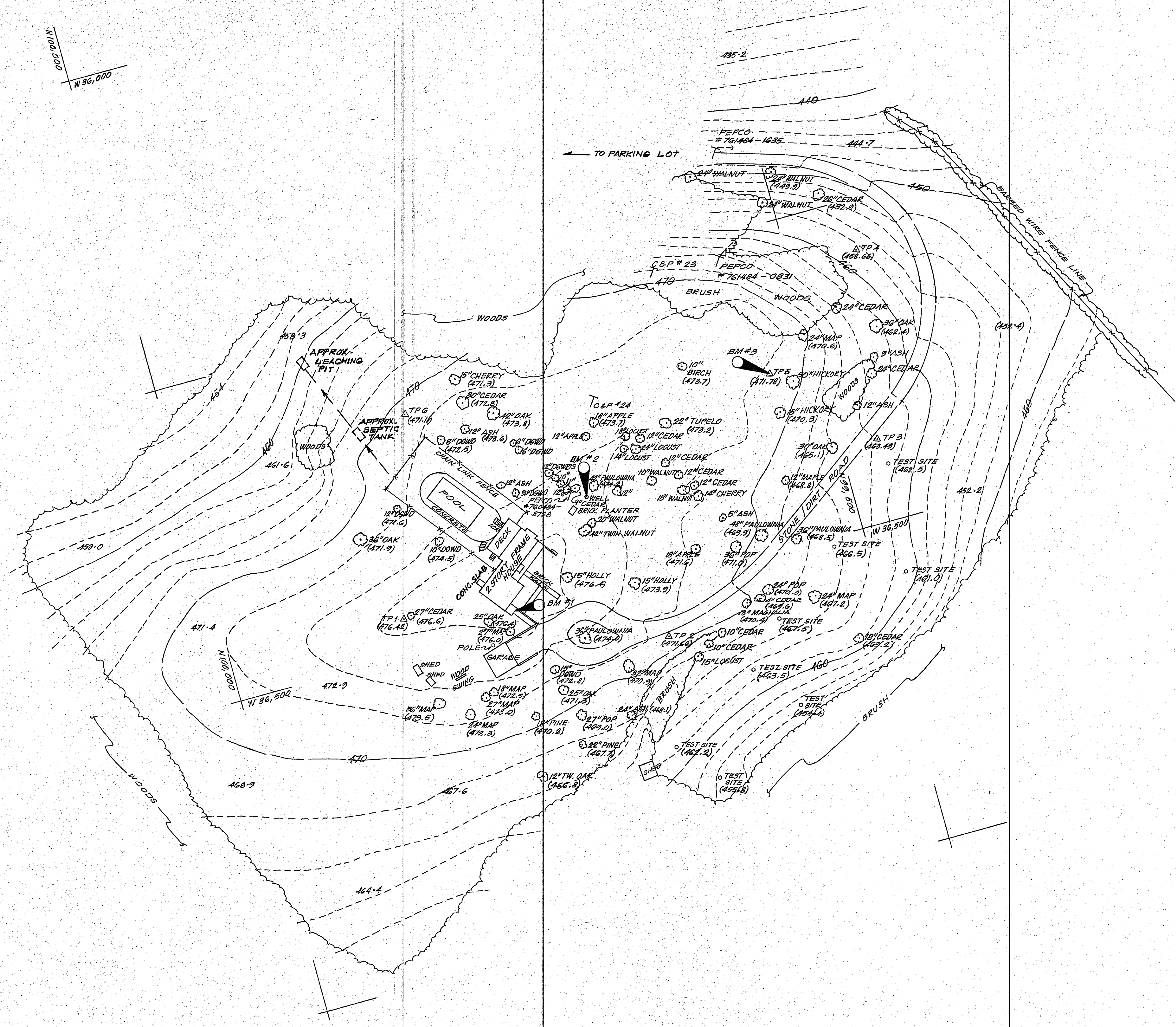
VICINITY MAP
SCALE: 1" = 2000'

NOTES

1. PROPERTY SHOWN HEREON IS OWNED BY MONTGOMERY COUNTY, MARYLAND DESCRIBED IN LIBER 5838 AT FOLIO 12 AMONG THE LAND RECORDS OF MONTGOMERY COUNTY, MARYLAND.
2. TOPOGRAPHIC SURVEY WAS CONDUCTED USING AN ELECTRONIC TOTAL STATION INSTRUMENT.
3. SUBSURFACE UTILITY LOCATIONS WERE COMPILED FROM AVAILABLE RECORDS AND VISIBLE SURFACE FEATURES.

BENCH MARKS

- B.M. #1 E CONC. STOOP EL. 477.72
- B.M. #2 WELL CAP EL. 475.93
- B.M. #3 TRAV. #5 EL. 471.78



000' 000' N
W 36,000'

SCANNED

NO.	REVISIONS	DATE
1	ADD. APPROX. SEPTIC LOCATION	11-15-91

ARC ADVANCE RESOURCE CONSULTANTS INC.
7940 AIRPARK ROAD
GAITHERSBURG, MARYLAND 20879
(301) 840-0746

TOPOGRAPHIC SURVEY
**AGRICULTURAL HISTORY FARM PARK
MAINTENANCE YARD AREA**
LAYTONSVILLE ELECTION DISTRICT NO.1
MONTGOMERY COUNTY, MARYLAND

DRWN ACM	SHEET 1
CHKD RHP	OF 1
DATE OCT 91	PROJECT NO. 1072
SCALE 1"=40'	