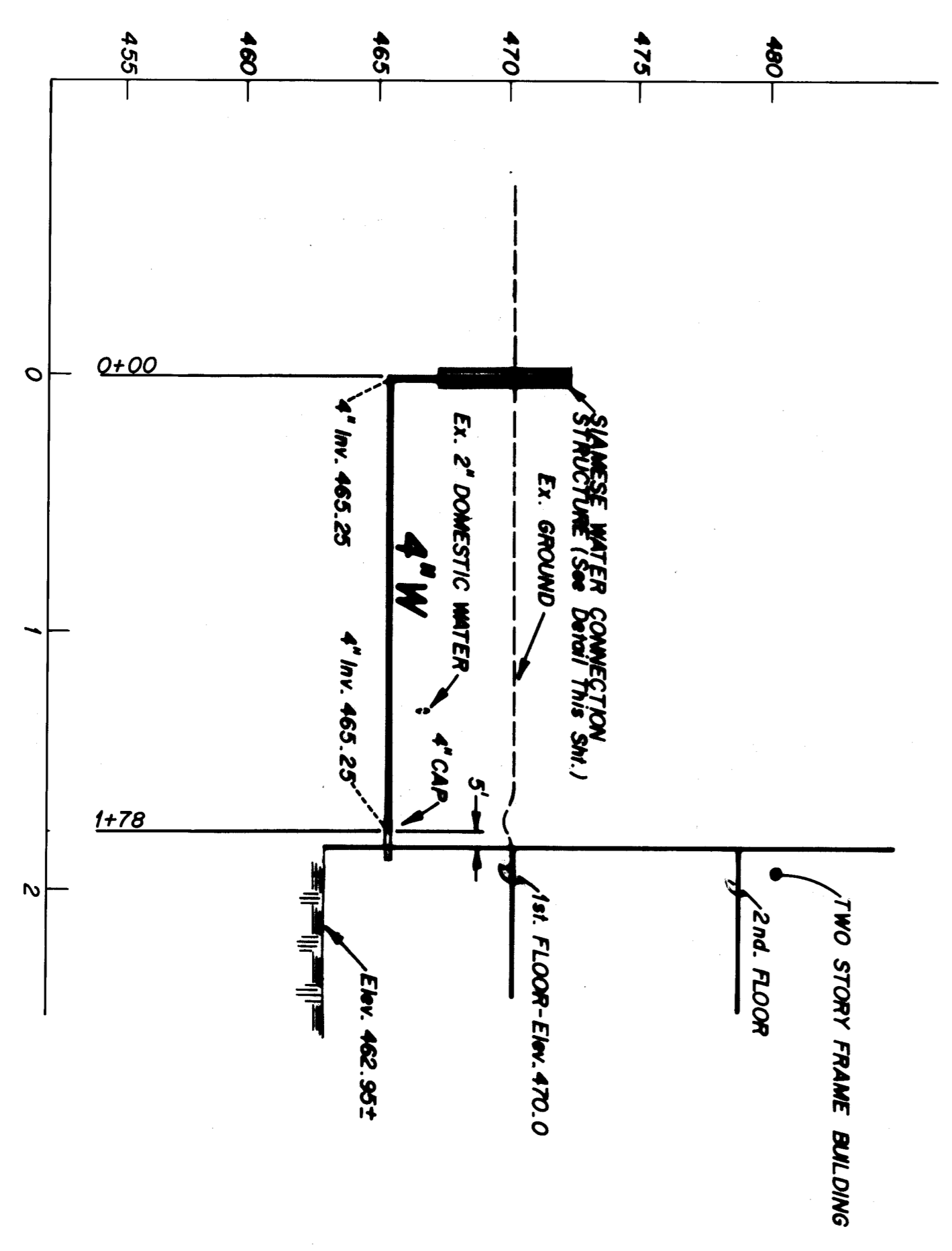
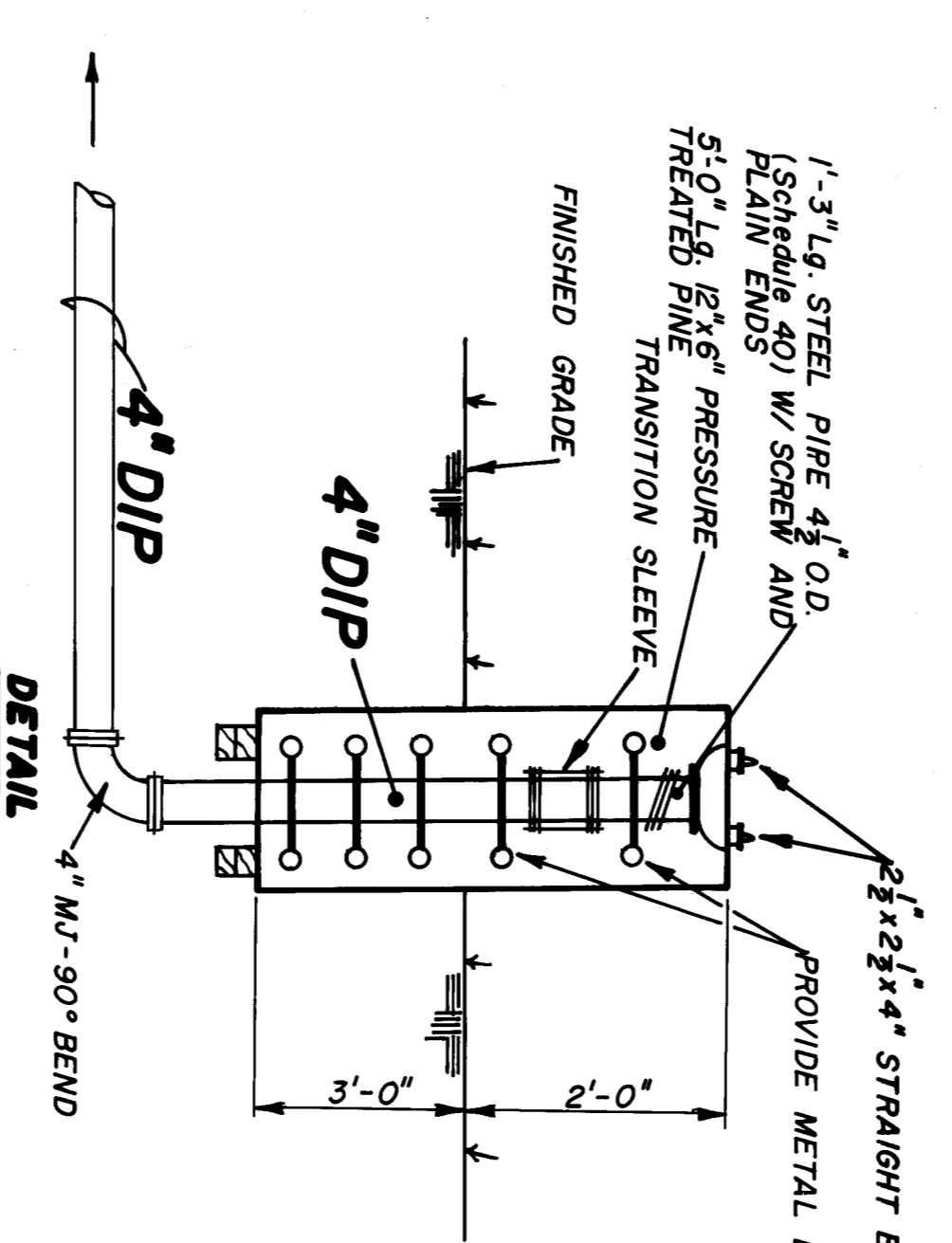


PROJECT	SIAMSESE CONNECTION
CLIENT	DOMESTIC WATER CONNECTION
DATE	8/26/19
SCALE	AS SHOWN
DESIGNER	BRUNAL KADLA
PROJECT NO.	1
DATE	8/26/19

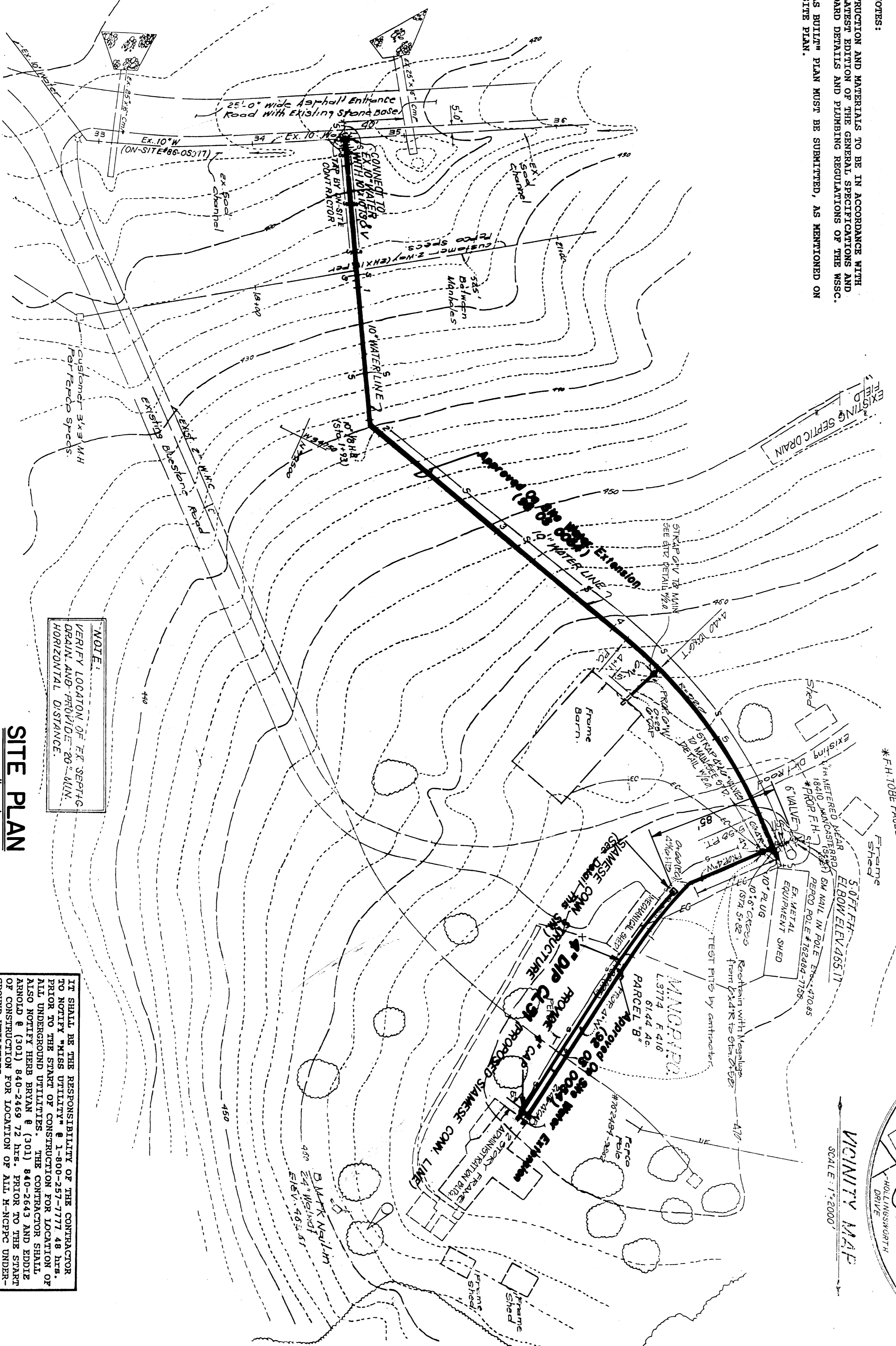
- GENERAL NOTES:
1. CONSTRUCTION AND MATERIALS TO BE IN ACCORDANCE WITH THE LATEST EDITION OF THE GENERAL SPECIFICATIONS AND STANDARD DETAILS AND PERMANENT RESOLUTIONS OF THE M&D.
 2. AN "AS BUILT" PLAN MUST BE SUBMITTED, AS MENTIONED ON THE SITE PLAN.

SIAMSESE STRUCTURE CONNECTION

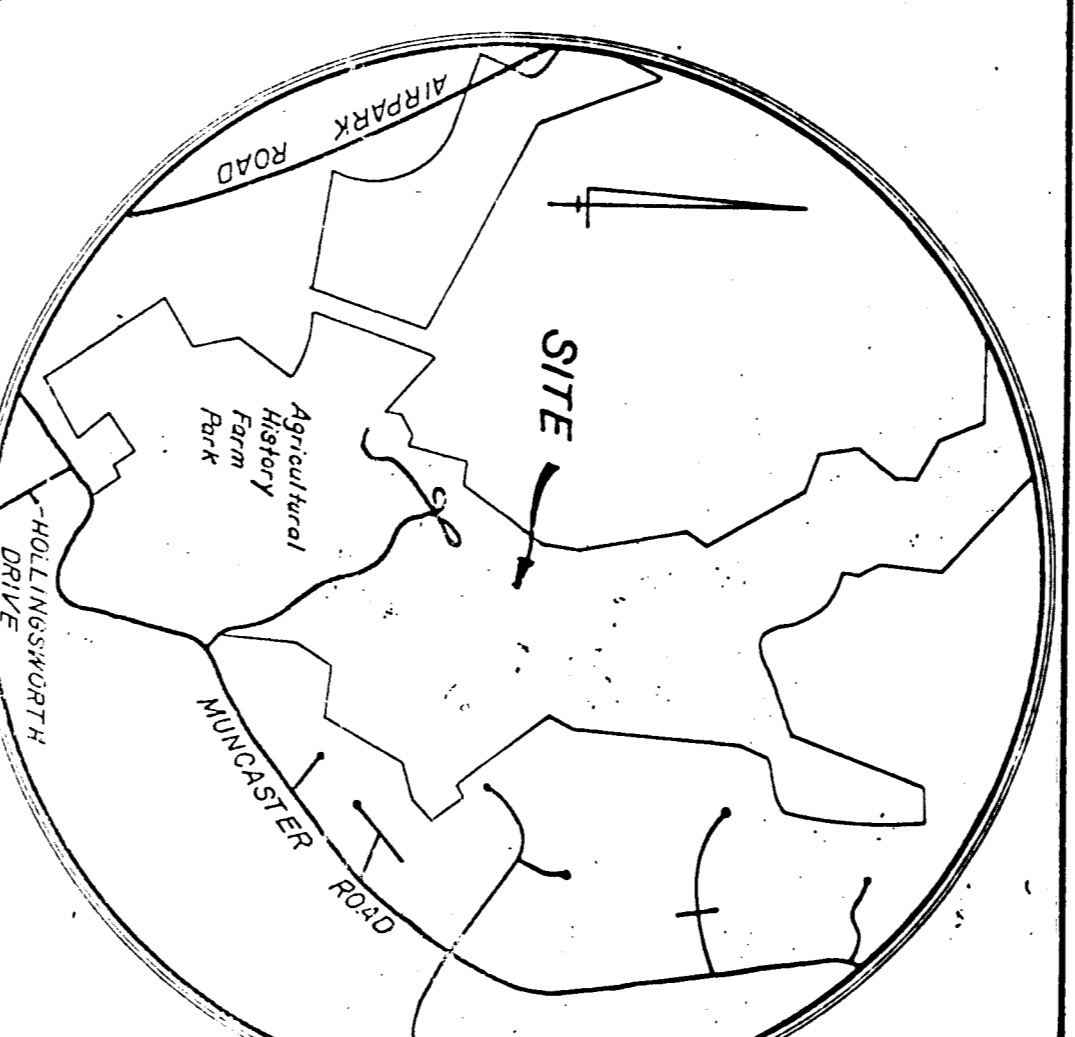


SIAMSESE WATER CONNECTION LINE

Scale: 1" = 50' Hor.
1" = 5' Vert.



FOR DETAILS OF PLUMBING CONNECTIONS AT FRAME BARN AND FRAME ADMINISTRATION BUILDING SEE SHEET 2.



NOTE:
VERIFY LOCATION OF EX. SEPTIC TANK, GROUND AND PROVIDE 30'-MIN. HORIZONTAL DISTANCE.

SITE PLAN

Scale: as shown

design review and approval

review and comment

The Maryland National Capital Park and Planning Commission
Department of Parks/Montgomery County

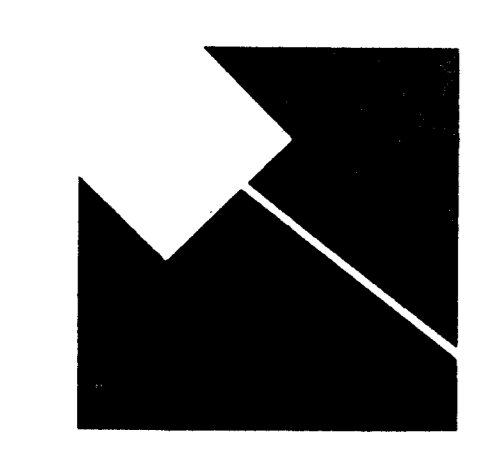
project:

AGRICULTURAL HISTORY FARM PARK
Montgomery Co., Md.

SIAMSESE CONNECTION LINE

designer: **Brunal Kadla**, 8/26/19
approved by: **Robert Brinkman**, 8/26/19

approved by: **Montgomery County Park Commission**



Parkside Headquarters
9500 Brunet Avenue
Silver Spring, Maryland 20901
(301) 455-2535