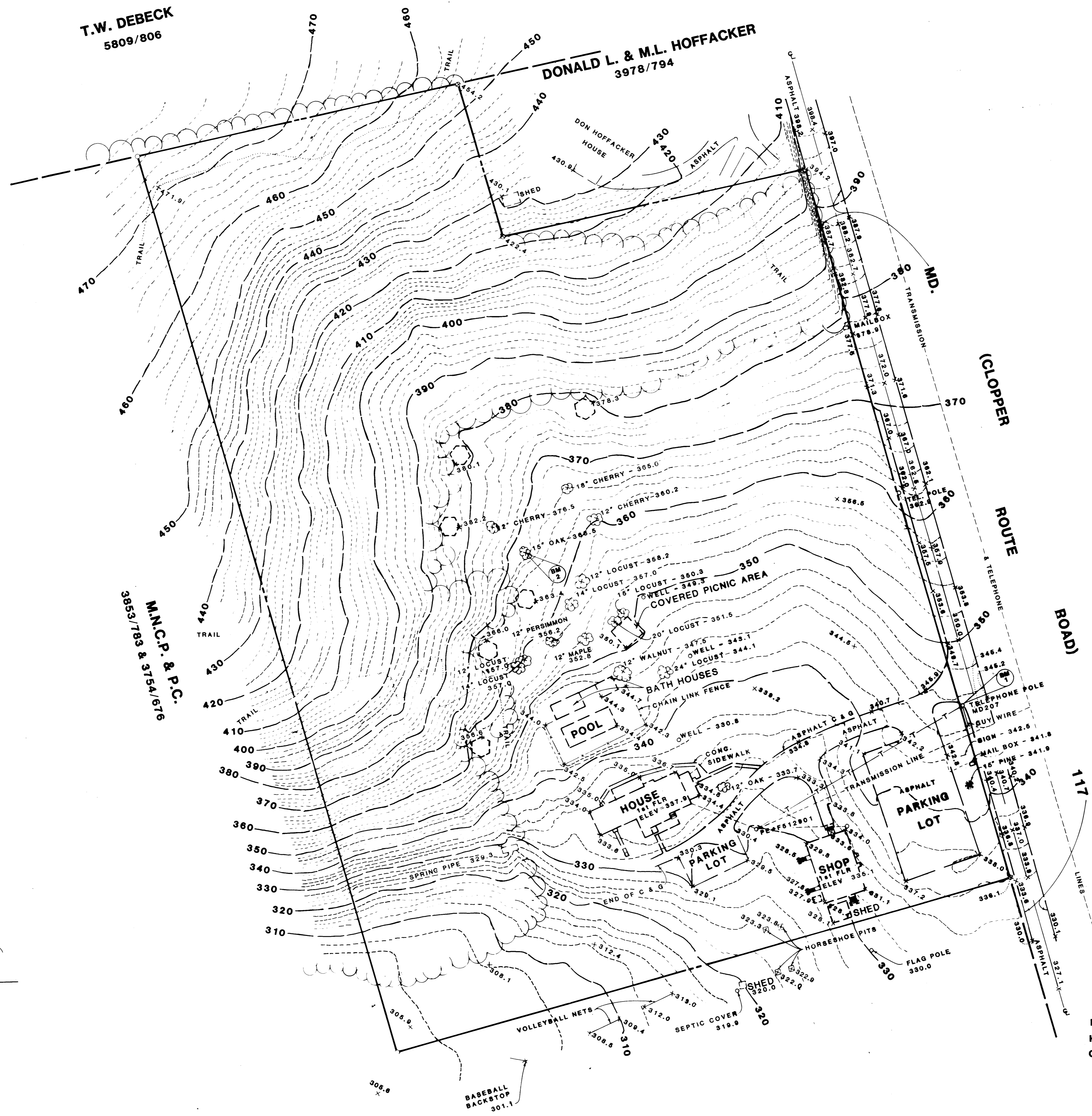


T.W. DEBECK
5809/806

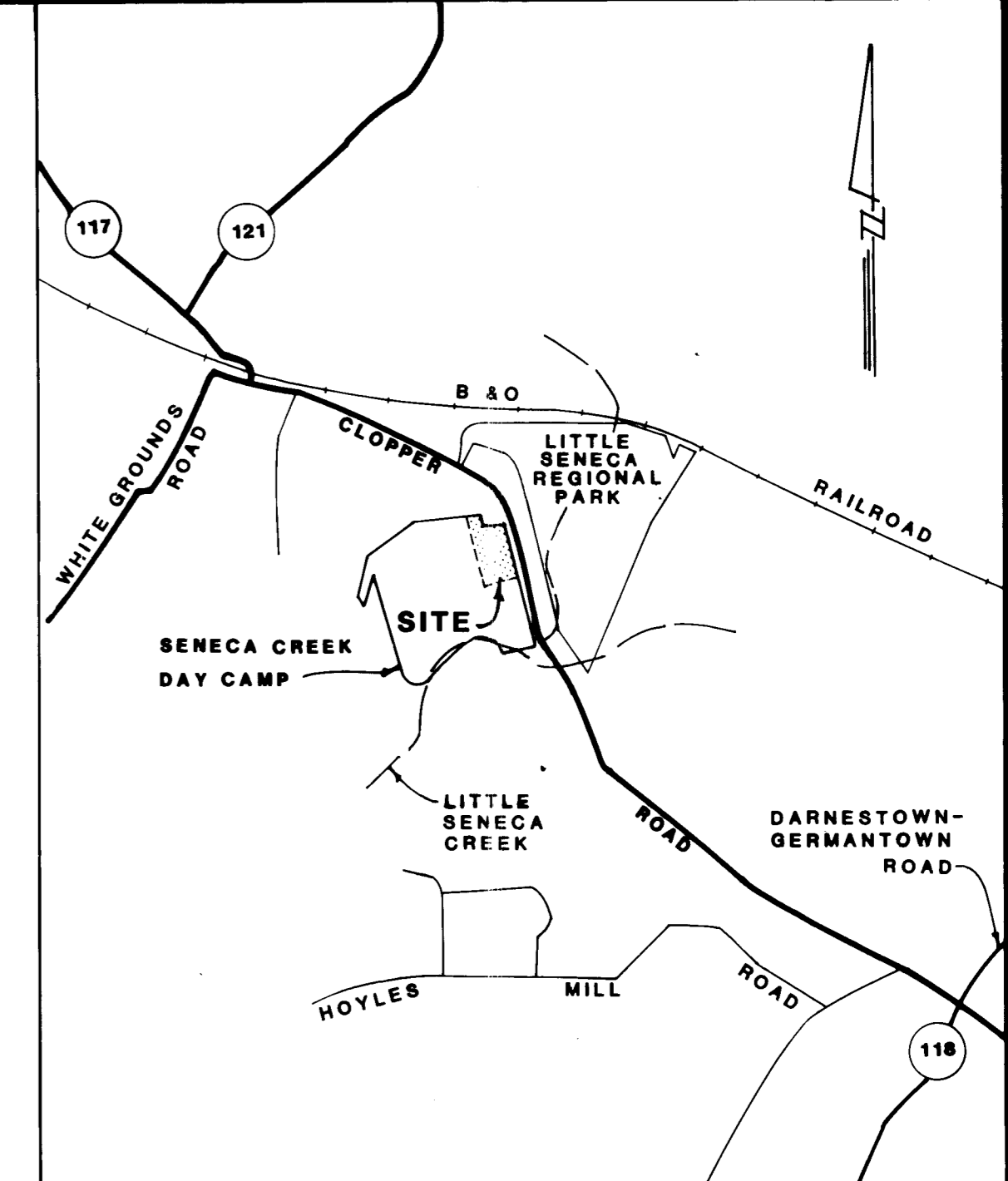
DONALD L. & M.L. HOFFACKER
3978/794



M.N.C.P. & P.C.
36953/783 & 3154/6176

LEGEND

- CONCRETE PATIO
- TREE LINE
- TELEPHONE LINE



VICINITY MAP
SCALE: 1" = 2000'

BENCHMARK INFORMATION

- BM#1: ELEV. = 345.33
CUT NAIL SET IN SOUTHWEST SIDE OF CAP POLE + MD207 AT CAMP ENTRANCE
- BM#2: ELEV. = 368.56
60 PENNY NAIL SET IN EAST SIDE OF 18" OAK
120"± NORTH OF EXISTING COVERED PICNIC AREA

SURVEYOR'S CERTIFICATE

I HEREBY CERTIFY THAT THE TOPOGRAPHY SHOWN HEREON IS CORRECT AND IT REFLECTS ACTUAL FIELD CONDITIONS AS OF THIS DATE.

8-8-84
DATE

Thomas L. Wiley
THOMAS L. WILEY
REG. PROF. LAND SURVEYOR
MQ. # 8095

Dewberry & Davis
Engineers, Architects, Planners, Surveyors
8901 Shady Grove Court, Gaithersburg, MD 20877
301 948-8300

CAMP SENECA SPECIAL PARK
TOPOGRAPHIC SURVEY
SENECA-DAY CAMP
MARYLAND-NATIONAL CAPITAL PARK AND PLANNING COMMISSION
MONTGOMERY COUNTY, MARYLAND

Scale	1" = 50'
Sheet	1 of 1
Date	AUGUST, 84
File Number	