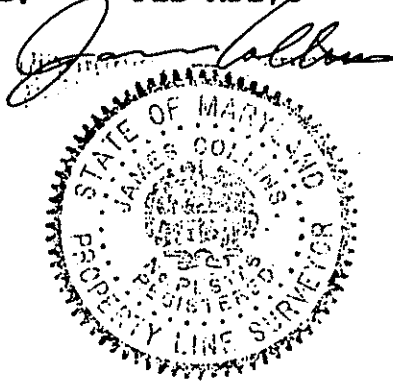


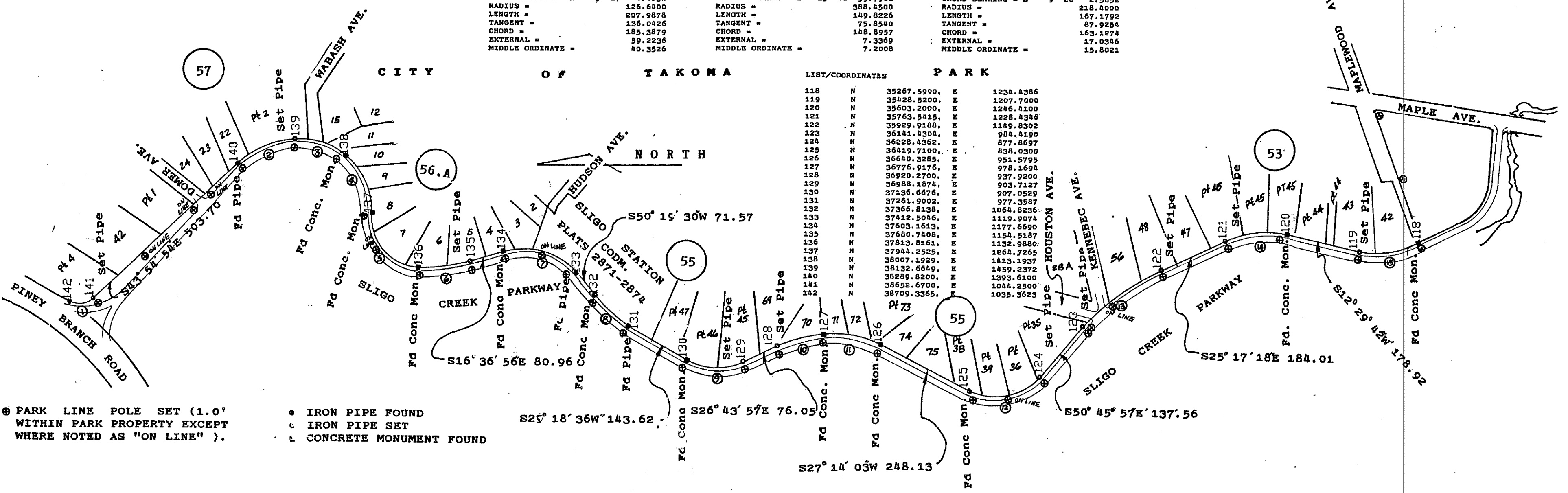
SURVEYOR'S CERTIFICATION

I HEREBY CERTIFY THAT THE PLAN SHOWN HEREON IS CORRECT; THAT IT IS A SURVEY OF ALL THE LANDS RECORDED IN BOOK 5 AT PLAT 428 AMONG THE LAND RECORDS OF MONTGOMERY COUNTY & BELONGING TO THE MARYLAND NATIONAL PARK AND PLANNING COMMISSION

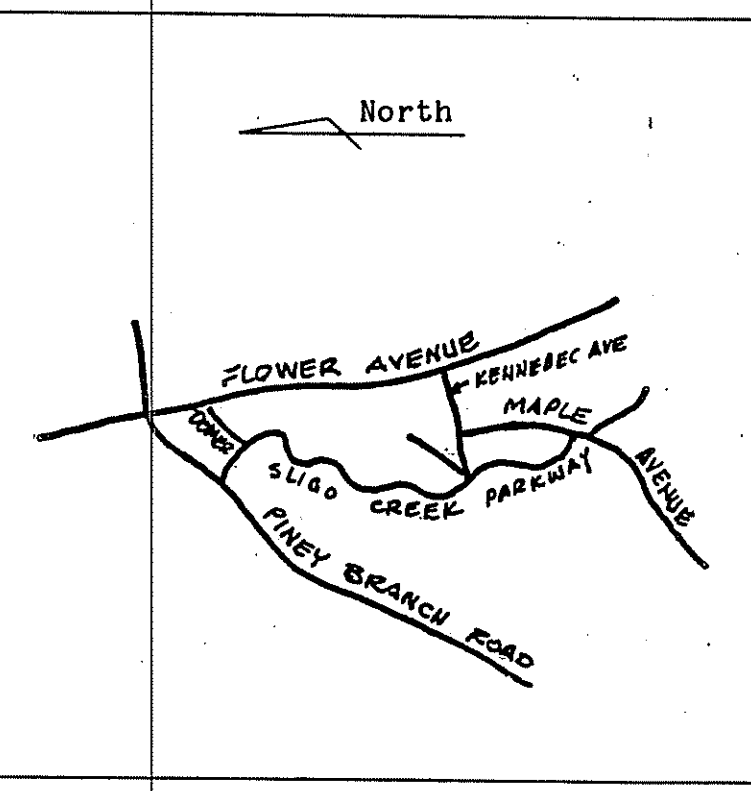
JAMES COLLINS, PLS MD176 DATE: JUNE 20, 1988



①	CIRCULAR CURVE CENTRAL ANGLE = 70 0 8.000 CHORD BEARING = S 8 54 59.597E RADIUS = 50.0000 LENGTH = 61.0885 TANGENT = 35.0118 CHORD = 57.8052 EXTERNAL = 11.0356 MIDDLE ORDINATE = 9.0430	②	CIRCULAR CURVE CENTRAL ANGLE = 136 148 135 L CHORD BEARING = S 9 11 25.597E RADIUS = 521.8000 LENGTH = 135.1838 TANGENT = 67.9728 CHORD = 136.8053 EXTERNAL = 4.4105 MIDDLE ORDINATE = 4.3735	③	CIRCULAR CURVE CENTRAL ANGLE = 127 153 126 R CHORD BEARING = S 11 0 57.700W RADIUS = 27.9200 LENGTH = 180.8986 TANGENT = 72.2522 CHORD = 139.1531 EXTERNAL = 9.9299 MIDDLE ORDINATE = 9.5617
④	CIRCULAR CURVE CENTRAL ANGLE = 100 144 139 R CHORD BEARING = S 42 29 58.000 RADIUS = 21.597E LENGTH = 174.2754 TANGENT = 91.3857 CHORD = 170.3075 EXTERNAL = 17.1397 MIDDLE ORDINATE = 15.9743	⑤	CIRCULAR CURVE CENTRAL ANGLE = 134 149 133 R CHORD BEARING = S 16 51 47.200W RADIUS = 180.6103 LENGTH = 211.0126 TANGENT = 119.4083 CHORD = 199.2144 EXTERNAL = 35.9040 MIDDLE ORDINATE = 29.9021	⑥	CIRCULAR CURVE CENTRAL ANGLE = 125 154 124 L CHORD BEARING = S 78 0 0.000 RADIUS = 11 45 56.512E LENGTH = 211.3234 TANGENT = 125.7028 CHORD = 199.3788 EXTERNAL = 44.5137 MIDDLE ORDINATE = 34.5936
⑦	CIRCULAR CURVE CENTRAL ANGLE = 139 145 138 R CHORD BEARING = S 20 9 4.303W RADIUS = 181.8000 LENGTH = 136.8624 TANGENT = 71.5574 CHORD = 133.6534 EXTERNAL = 13.6859 MIDDLE ORDINATE = 12.7277	⑧	CIRCULAR CURVE CENTRAL ANGLE = 132 150 131 L CHORD BEARING = S 21 0 58.190 RADIUS = 2.900W LENGTH = 374.4981 TANGENT = 137.3591 CHORD = 136.5904 EXTERNAL = 6.3871 MIDDLE ORDINATE = 6.2800	⑨	CIRCULAR CURVE CENTRAL ANGLE = 123 155 122 R CHORD BEARING = S 38 1 37.041E RADIUS = 608.8521 LENGTH = 270.7358 TANGENT = 137.8434 CHORD = 268.5108 EXTERNAL = 15.3647 MIDDLE ORDINATE = 14.9865
⑩	CIRCULAR CURVE CENTRAL ANGLE = 138 146 137 R CHORD BEARING = S 50 37 0.000 RADIUS = 34.400W LENGTH = 166.6233 TANGENT = 89.1891 CHORD = 161.2373 EXTERNAL = 20.0247 MIDDLE ORDINATE = 18.1027	⑪	CIRCULAR CURVE CENTRAL ANGLE = 128 152 127 R CHORD BEARING = S 15 40 59.795E RADIUS = 388.4500 LENGTH = 149.8226 TANGENT = 75.8240 CHORD = 148.8957 EXTERNAL = 7.3365 MIDDLE ORDINATE = 7.2063	⑫	CIRCULAR CURVE CENTRAL ANGLE = 119 159 118 L CHORD BEARING = S 43 51 30.000 RADIUS = 9 26 218.4000 LENGTH = 167.1792 TANGENT = 87.9234 CHORD = 163.1274 EXTERNAL = 17.0346 MIDDLE ORDINATE = 15.8021



⊙ PARK LINE POLE SET (1.0' WITHIN PARK PROPERTY EXCEPT WHERE NOTED AS "ON LINE").
 ● IRON PIPE FOUND
 ○ IRON PIPE SET
 □ CONCRETE MONUMENT FOUND



VICINITY MAP

PLAT OF MONUMENTATION
 SLIGO CREEK STREAM VALLEY PARK
 UNIT NO. 1
 PINEY BRANCH ROAD TO MAPLE AVENUE
 WHEATON ELECTION DISTRICT NO. 13
 MONTGOMERY COUNTY, MARYLAND

SCALE 1"=200' JULY 1988

DIGITAL ENGINEERING CORP.

622 HUNGERFORD DR. SUITE 21
 ROCKVILLE MD 20850
 TEL: (301) 424 7772