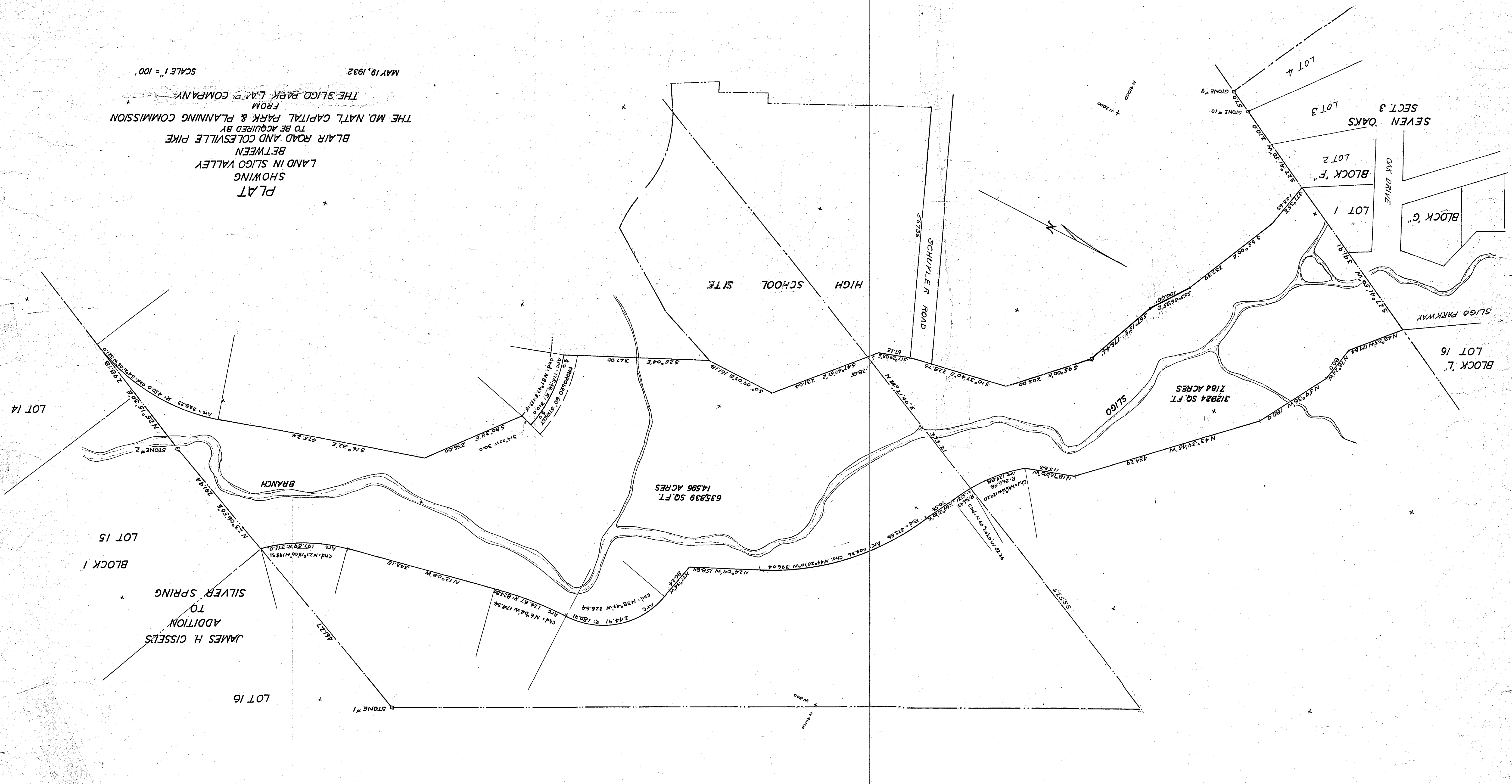


PLAT
 SHOWING
 LAND IN SLIGO VALLEY
 BETWEEN
 BLAIR ROAD AND COLESVILLE PIKE
 TO BE ACQUIRED BY
 THE MD. NAT'L CAPITAL PARK & PLANNING COMMISSION
 FROM
 THE SLIGO PARK L.A.T. COMPANY
 MAY 19, 1932
 SCALE 1" = 100'



JAMES H. GISSELS
 ADDITION
 TO
 SILVER SPRING

14,596 SQ. FT.
 HIGH SCHOOL SITE

7184 SQ. FT.
 BLOCK 7, LOT 16

SEVEN OAKS
 BLOCK "G"

BLOCK "F"

LOT 3

LOT 2

LOT 1

LOT 4

LOT 16

LOT 15

BLOCK 1

LOT 16

LOT 14

SCHUYLER ROAD

SLIGO

SLIGO BRANCH

SLIGO PARKWAY

OAK DRIVE

N 41000

N 41000

N 11500

STONE #1

STONE #10

STONE #9

STONE #2

STONE #3

STONE #4

STONE #5

STONE #6

STONE #7

STONE #8

STONE #9

STONE #10

STONE #11

STONE #12

STONE #13

STONE #14

STONE #15

STONE #16

STONE #17

STONE #18

STONE #19

STONE #20

STONE #21

STONE #22

STONE #23

STONE #24

STONE #25

STONE #26

STONE #27

STONE #28

STONE #29

STONE #30

STONE #31

STONE #32

STONE #33

STONE #34

STONE #35

STONE #36

STONE #37

STONE #38

STONE #39

STONE #40

STONE #41

STONE #42

STONE #43

STONE #44

STONE #45

STONE #46

STONE #47

STONE #48

STONE #49

STONE #50

STONE #51

STONE #52

STONE #53

STONE #54

STONE #55

STONE #56

STONE #57

STONE #58

STONE #59

STONE #60

STONE #61

STONE #62

STONE #63

STONE #64

STONE #65

STONE #66

STONE #67

STONE #68

STONE #69

STONE #70

STONE #71

STONE #72

STONE #73

STONE #74

STONE #75

STONE #76

STONE #77

STONE #78

STONE #79

STONE #80

STONE #81

STONE #82

STONE #83

STONE #84

STONE #85

STONE #86

STONE #87

STONE #88

STONE #89

STONE #90

STONE #91

STONE #92

STONE #93

STONE #94

STONE #95

STONE #96

STONE #97

STONE #98

STONE #99

STONE #100