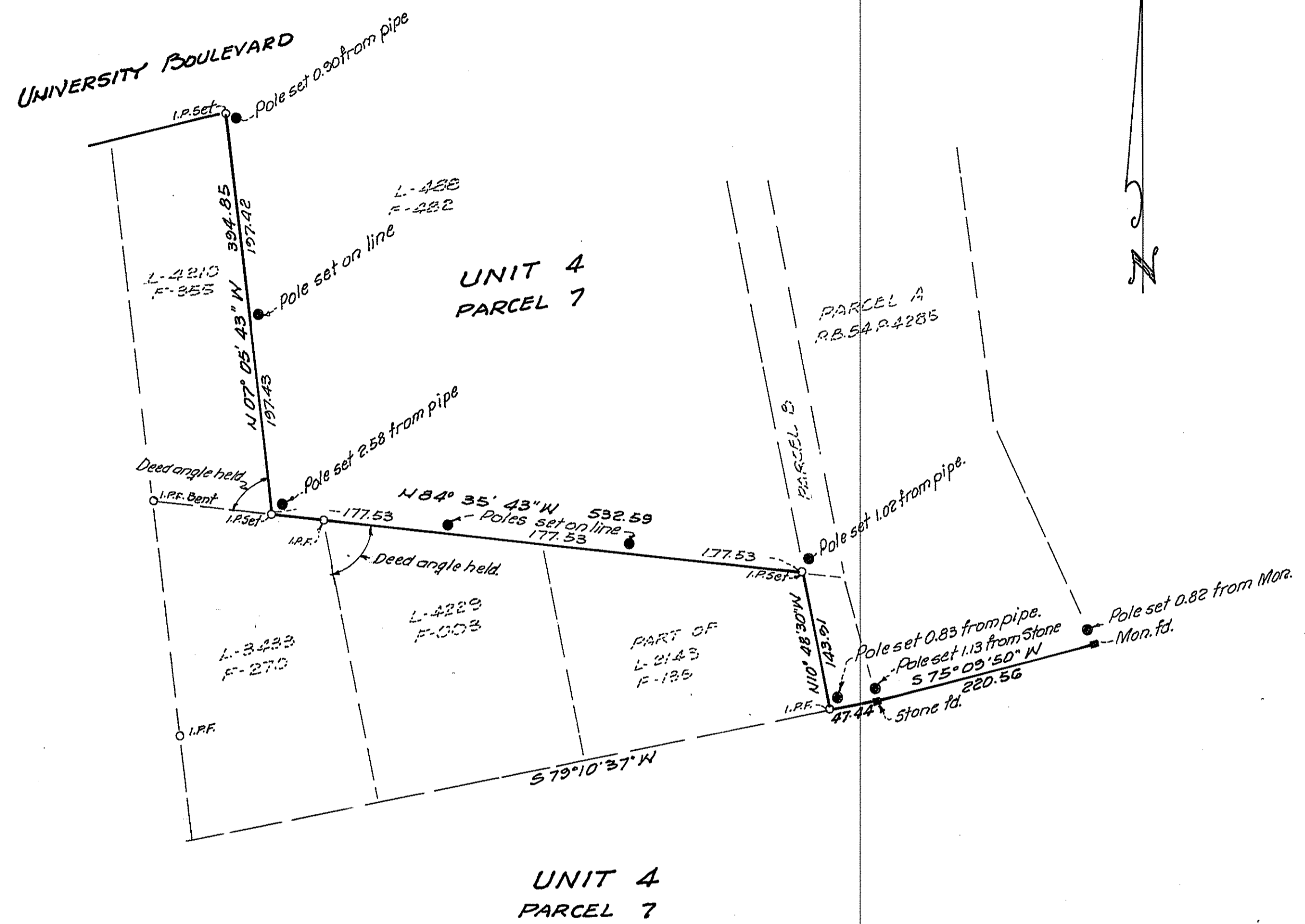
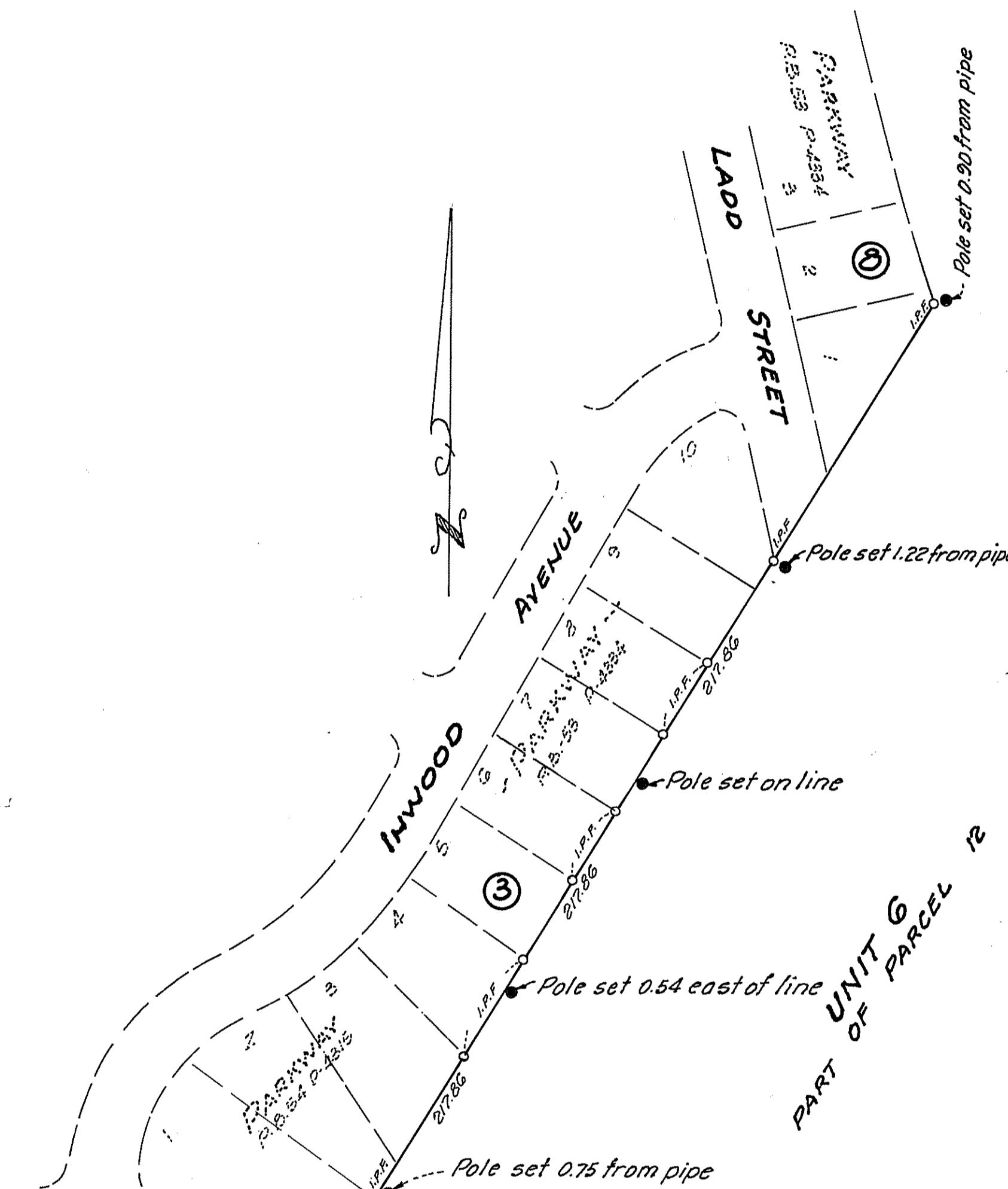


UNIT 3
PARCEL 7



UNIT 4
PARCEL 7



UNIT 6
PART OF PARCEL 12

PLAT OF MONUMENTATION
 ~ SLIGO CREEK STREAM VALLEY PARK ~
 UNIT 3, PARCEL 7; UNIT 4, PARCEL 20; UNIT 6, PARCEL 12

~ WHEATON ELECTION DISTRICT NO. 13 ~
 MONTGOMERY COUNTY, MARYLAND
 SCALE: 1"=100' FEB, 1983

WALLACE R. AMOS AND ASSOCIATES, LTD.
 3525 GEORGIA AVENUE
 SILVER SPRING, MARYLAND
 565-3727

VICINITY MAP
 SCALE 1"=3000'

