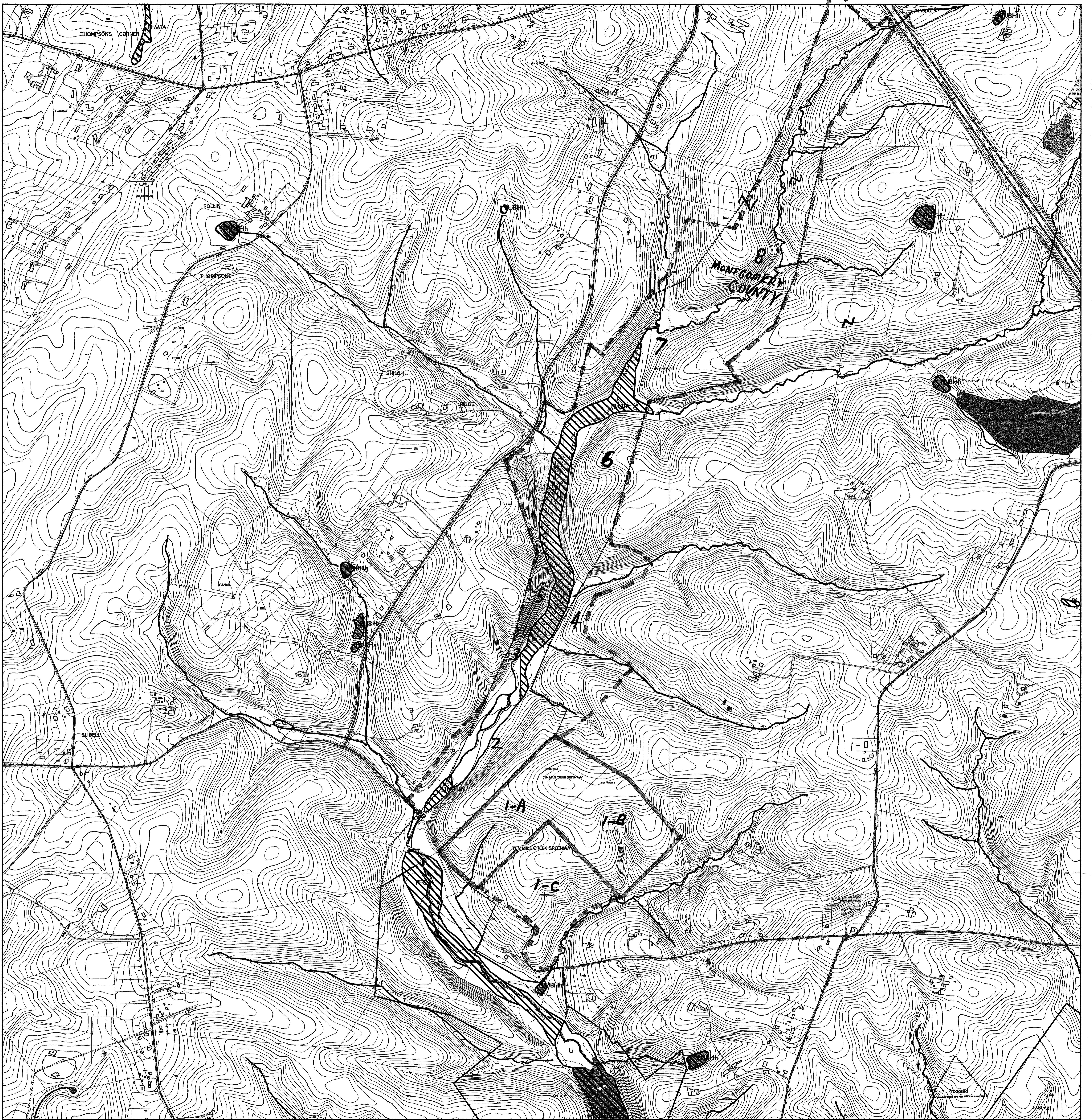


TEN MILE CREEK



Map compiled on March 20, 2001 at 9:46 AM | Site located on base sheet no - 231NW15

NOTICE

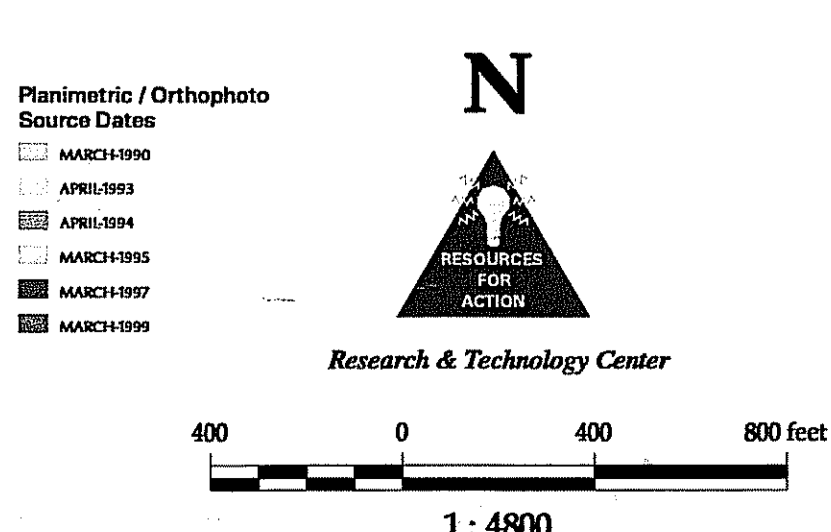
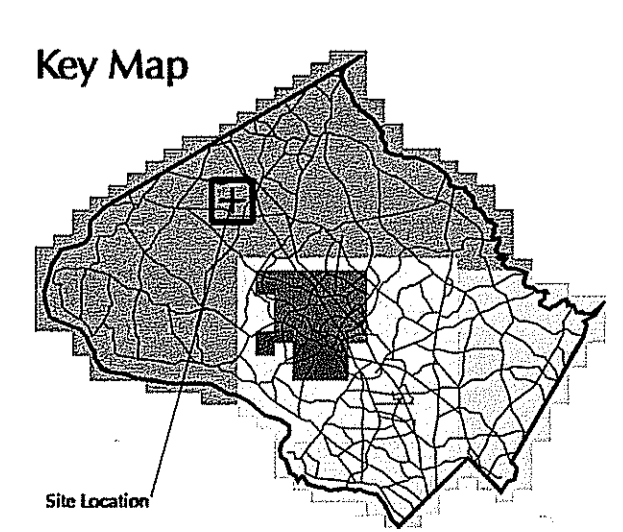
The planimetric, property, and topographic information shown on this map is based on copyrighted Map Products from the Montgomery County Department of Park and Planning of the Maryland National Capital Park and Planning Commission, and may not be copied or reproduced without written permission from M-NCPPC.

Property lines are compiled by adjusting the property lines to topography created from aerial photography and should not be interpreted as actual field surveys. Planimetric features were compiled from 1:14400 scale aerial photography using stereo photogrammetric methods.

This map is created from a variety of data sources, and may not reflect the most current conditions in any one location and may not be completely accurate or up to date. All map features are approximately within five feet of their true location. This map may not be the same as a map of the same area plotted at an earlier time as the data is continuously updated. Use of this map, other than for general planning purposes is not recommended.

MONTGOMERY COUNTY DEPARTMENT OF PARK AND PLANNING
 THE MARYLAND NATIONAL CAPITAL PARK AND PLANNING COMMISSION
 8787 Georgia Avenue - Silver Spring, Maryland 20910-3760

Legend	
	Major (over 200) Private Rd. Over 4' Road Right-of-Way
	Unpaved Parking Lot/Drives
	Rail Lines (CSX & METRO)
	Landfills
	Swimming Pools
	Reservoirs
	Gravel/Grow Sites
	AMetric Field/Court
	Canals
	Major Retaining Walls
	Major Discharge Channels
	Major Transmission Lines
	Major Culets
	Power Transformer Stations
	Contours
	Existing Parkland
	Proposed Parkland
	Wetlands



TEN MILE CREEK SVP