

Burtonsville

7



PLACE

Table 7-1: Burtonsville, Land Use Indicators (2024)

Characteristic	Value
Total area (acres)	5,949
Total development (square feet)	7,267,789
<i>Key environmental indicators</i>	
Parkland (acres)	1,604
Tree canopy cover (percent)	58.48
<i>Key development types</i>	
Office use (square feet)	272,410
Retail use (square feet)	389,091
Industrial use (square feet)	423,058
Other use (square feet)	513,794
Residential use (dwelling units)	2,931

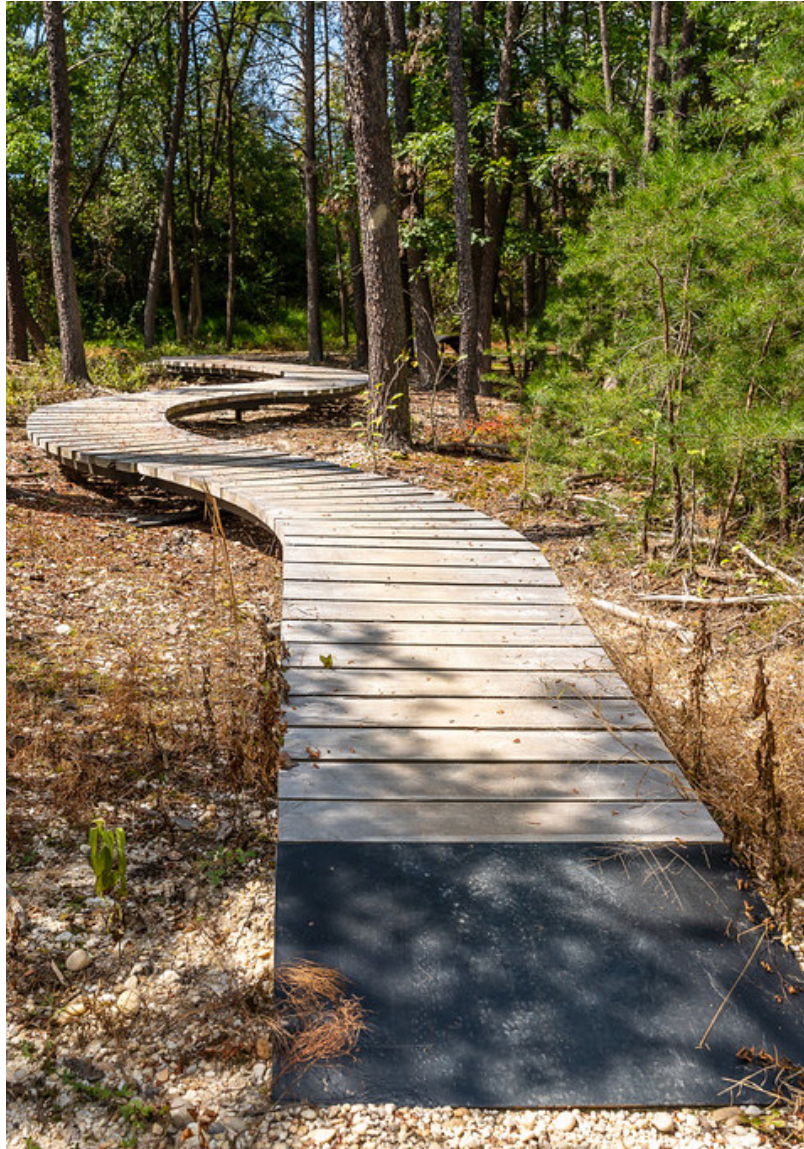
Source: Montgomery Planning; Maryland State Department of Assessments and Taxation (August 2024).

Table 7-2: Burtonsville, Places of Interest (2024)

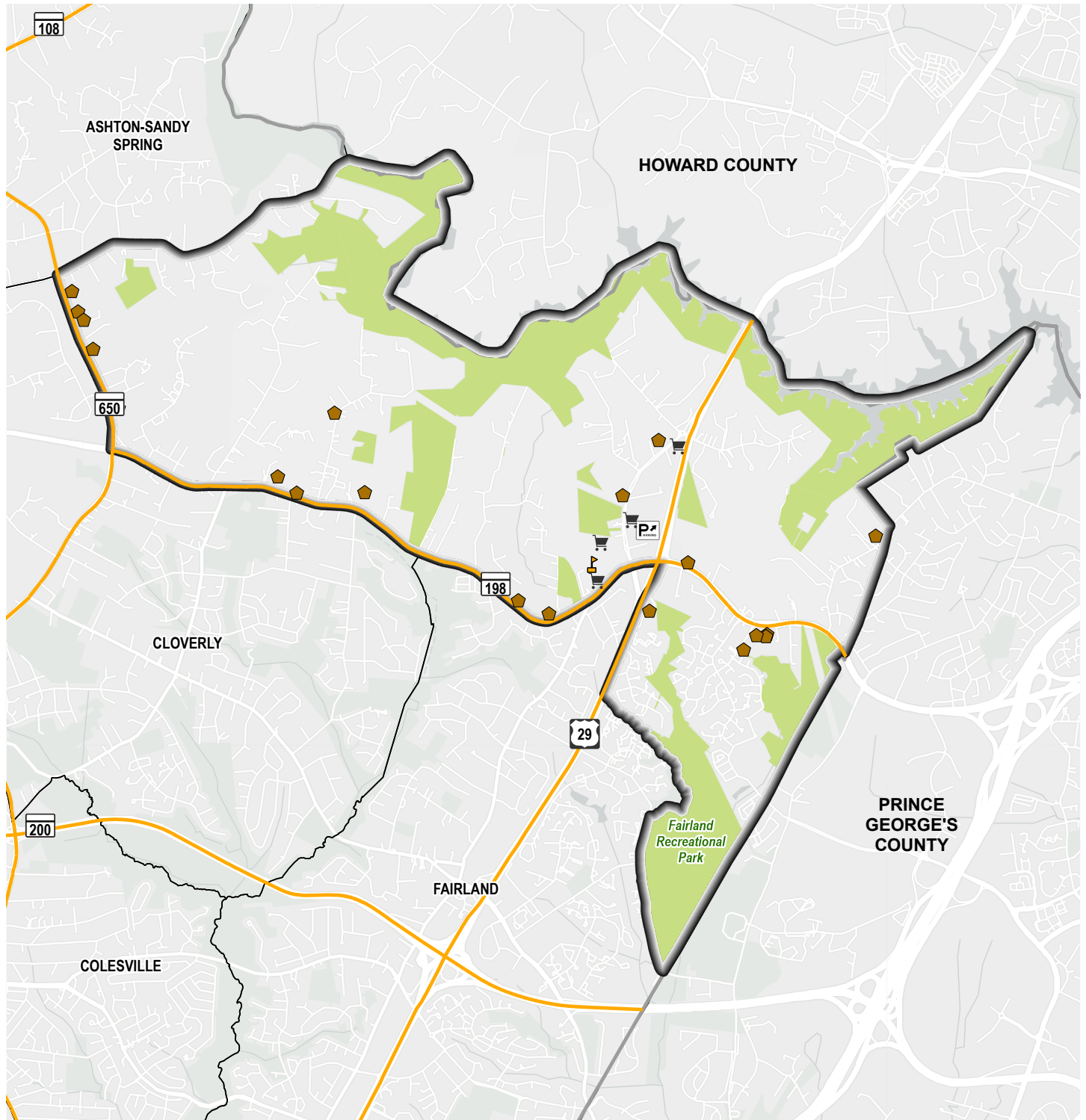
Place of Interest	Number
Fire Station	0
Grocery Store	4
Healthcare Facility	0
Library	0
Place of Worship	20
Police Facility	0
Public School	1
Recreation Center	0

Source: Montgomery Planning (August 2024).

Burtonsville is the easternmost community in the county and borders both Howard and Prince George’s Counties. Approximately 40% of the land is allocated for agricultural uses and parkland, notably with Fairland Recreational Park in the southern part of the community. Single-family detached units occupy nearly all the 32% of land used for residential purposes. Two shopping centers, Burtonsville Town Square and the newly renovated Burtonsville Crossing, are located along U.S. Route 29 (Columbia Pike) and include two grocery stores (Giant Food and Sprouts Farmers Market), fast casual restaurants, and other upcoming retail options. Given the semi-rural nature of this community, no public rail transit options exist; however, a Park & Ride lot off U.S. Route 29 is available for commuters traveling between Baltimore and Washington, DC.



Map 7-1: Burtonsville, Places of Interest (2024)

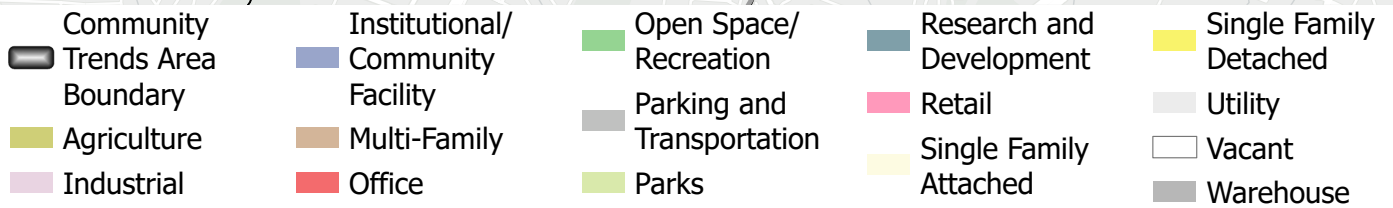
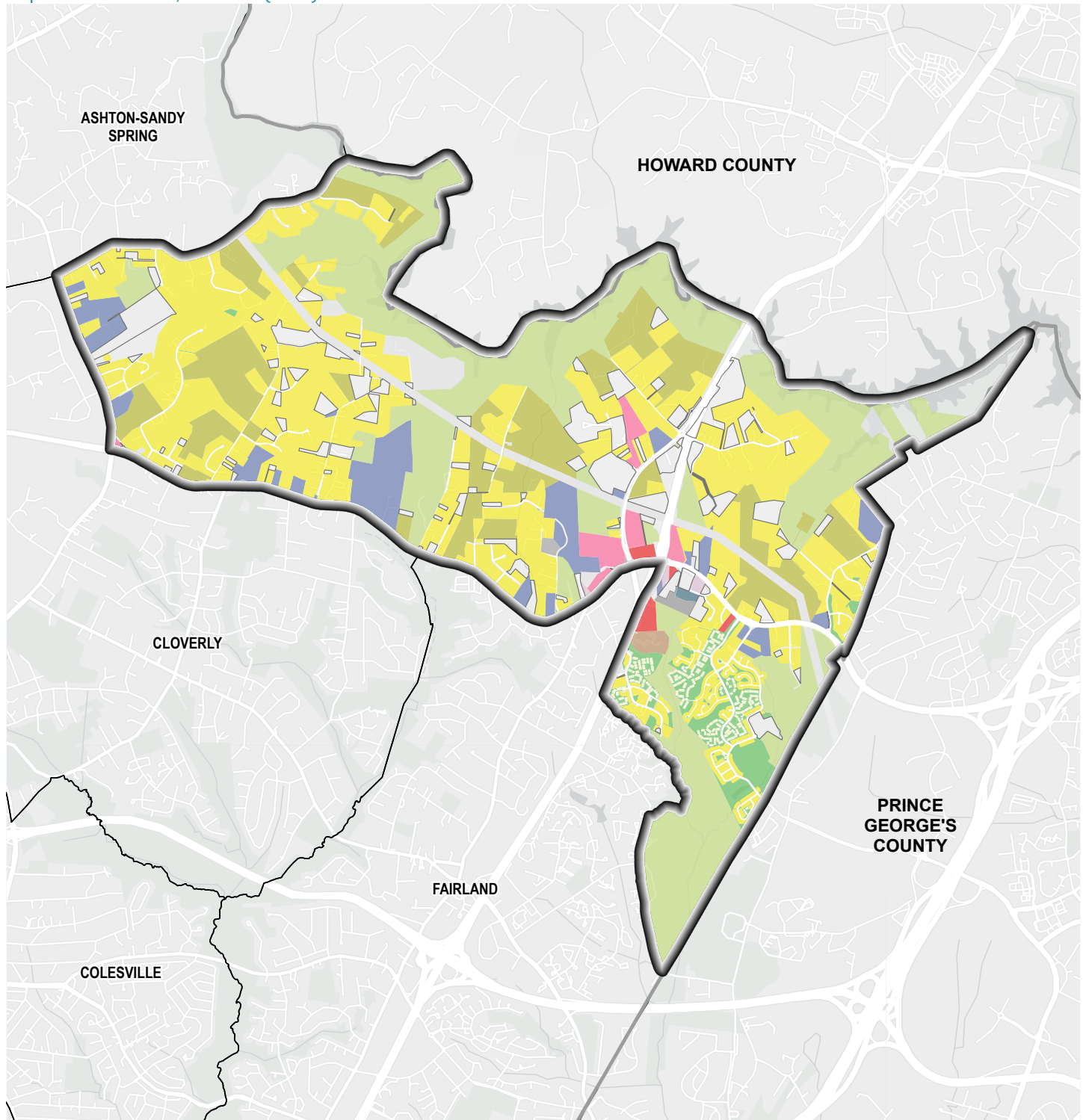


- | | | |
|--------------------------------|-------------------|------------------|
| Community Trends Area Boundary | Park and Ride Lot | Place of Worship |
| Major Road | Park | Public School |
| | Grocery Store | |



Source: Montgomery Planning (August 2024).

Map 7-2: Burtonsville, Land Use (2024)



Source: Montgomery Planning (August 2024).

Table 7-3: Burtonsville, Land Use (2024)

Land Use Category	Percent of Land Area*	Land Use Category	Percent of Land Area*
Agriculture	11.9%	Parks	27.3%
Cultural	< 1.0%	Research and Development	< 1.0%
Industrial	< 1.0%	Retail	1.3%
Institutional/Community Facility	5.1%	Single-Family Attached	< 1.0%
Mixed-Use Office	< 1.0%	Single-Family Detached	30.9%
Multi-Family	< 1.0%	Utility	3.5%
Office	< 1.0%	Vacant	7.2%
Open Space/Recreation	2.6%	Warehouse	< 1.0%
Parking and Transportation	< 1.0%		

* Percents do not add up to 100% as rights-of-way are excluded.
 Source: Montgomery Planning (August 2024).



PEOPLE

Burtonsville had 9,072 residents in 2022, and, though the population had not grown significantly since 2010, some facets of this community changed. Like other areas of eastern Montgomery County, this community is home to a large Black population with growing numbers of other racial and ethnic groups (see Table 7-5 and Figure 7-1). One of the fastest growing of those was the CTA's Hispanic population, which increased by 88% from 2010 to 2022. The community's diversity was further reflected by the majority of residents (53% in 2022) who spoke a language other than English at home.

Educational attainment levels increased in the years at hand as the share of adults ages 25 and over with at least a bachelor's degree grew from 40% to 50%. The average household income increased by 43% to \$152,000 in 2022, with fewer households earning less than \$100,000 and

more households with higher incomes over time. Despite many demographic changes, Burtonsville continued to have a youthful population and families with children: 26% of the population was under age 18 in 2022, and 46% of households were families with children. In part due to the prevalence of this household type, the average household size of 3.32 people was larger than that of many other communities in the county.



Reflective of Burtonsville's diversity, 53% of its residents in 2022 spoke a language other than English at home.

Table 7-4: Burtonsville, Age

Age	2010 Estimate	2010 %	2016 Estimate	2016 %	2022 Estimate	2022 %
Total population	7,996	100%	9,255	100%	9,072	100%
0 to 4 years	709	9%	575	6%	610	7%
5 to 17 years	1,682	21%	2,031	22%	1,755	19%
18 to 34 years	1,522	19%	1,903	21%	1,755	19%
35 to 44 years	1,252	16%	1,198	13%	1,494	16%
45 to 64 years	2,231	28%	2,738	30%	2,320	26%
65 years and older	600	8%	810	9%	1,138	13%

Estimates and percentages may not sum to totals due to rounding. Source: U.S. Census Bureau, 2010, 2016, and 2022 American Community Survey, 5-year estimates.

Table 7-5: Burtonsville, Race and Hispanic Ethnicity

Race and Hispanic Ethnicity	2010 Estimate	2010 %	2016 Estimate	2016 %	2022 Estimate	2022 %
Total population	7,996	100%	9,255	100%	9,072	100%
White, non-Hispanic	2,412	30%	2,373	26%	1,738	19%
Black or African American, non-Hispanic	3,383	42%	4,104	44%	3,423	38%
Asian, non-Hispanic	1,312	16%	1,110	12%	2,083	23%
Other races, non-Hispanic	*	*	416	4%	659	7%
Hispanic or Latino	623	8%	1,252	14%	1,169	13%

* Estimates are not reliable. Estimates and percentages may not sum to totals due to rounding. Source: U.S. Census Bureau, 2010, 2016, and 2022 American Community Survey, 5-year estimates.

Table 7-6: Burtonsville, English Language Usage and Ability

English Language Usage and Ability	2010 Estimate	2010 %	2016 Estimate	2016 %	2022 Estimate	2022 %
Population ages 5 years and over	7,287	100%	8,680	100%	8,462	100%
Speak non-English language at home	3,019	41%	3,538	41%	4,448	53%
Speak English less than “very well”	*	*	897	10%	1,070	13%

* Estimates are not reliable.

Estimates and percentages may not sum to totals due to rounding.

Source: U.S. Census Bureau, 2010, 2016, and 2022 American Community Survey, 5-year estimates.

Table 7-7: Burtonsville, Educational Attainment

Educational Attainment	2010 Estimate	2010 %	2016 Estimate	2016 %	2022 Estimate	2022 %
Population ages 25 years and over	4,797	100%	5,840	100%	5,921	100%
No high school degree	*	*	473	8%	542	9%
High school degree or some college education	2,254	47%	2,462	42%	2,413	41%
Bachelor’s degree only	973	20%	1,562	27%	1,710	29%
Graduate or professional degree	959	20%	1,343	23%	1,256	21%

* Estimates are not reliable.

Estimates and percentages may not sum to totals due to rounding.

Source: U.S. Census Bureau, 2010, 2016, and 2022 American Community Survey, 5-year estimates.

Table 7-8: Burtonsville, Commuting Mode and Household Vehicle Availability

Commuting Mode and Household Vehicle Availability	2010 Estimate	2010 %	2016 Estimate	2016 %	2022 Estimate	2022 %
Workers ages 16 years and over	4,044	100%	4,805	100%	5,073	100%
Commuted by driving	3,353	83%	4,314	90%	3,805	75%
Car-free commute	370	9%	224	5%	220	4%
Worked from home	288	7%	234	5%	1,006	20%
Percent of households with no vehicles	*	*	95	3%	69	3%

* Estimates are not reliable.

Estimates and percentages may not sum to totals due to rounding.

Source: U.S. Census Bureau, 2010, 2016, and 2022 American Community Survey, 5-year estimates.

Table 7-9: Burtonsville, Household Type

Household Type	2010 Estimate	2010 %	2016 Estimate	2016 %	2022 Estimate	2022 %
Total number of households	2,448	100%	2,909	100%	2,725	100%
Family households	2,053	84%	2,188	75%	2,313	85%
Families with children	1,147	47%	1,170	40%	1,251	46%
Single-parent families with children	*	*	414	14%	282	10%
Nonfamily multi-person households	87	4%	129	4%	*	*
Nonfamily single-person households	308	13%	592	20%	366	13%
Average household size	3.24	NA	3.17	NA	3.32	NA

NA Not Applicable.

* Estimates are not reliable.

Estimates and percentages may not sum to totals due to rounding.

Source: U.S. Census Bureau, 2010, 2016, and 2022 American Community Survey, 5-year estimates.

Table 7-10: Burtonsville, Household Income

Household Income	2010 Estimate	2010 %	2016 Estimate	2016 %	2022 Estimate	2022 %
Total number of households	2,448	100%	2,909	100%	2,725	100%
Less than \$50,000	*	*	605	21%	261	10%
\$50,000 to \$99,999	824	34%	801	28%	630	23%
\$100,000 to \$149,999	572	23%	722	25%	792	29%
\$150,000 to \$199,999	365	15%	388	13%	465	17%
\$200,000 or more	180	7%	393	14%	577	21%
Average household income	\$106,566	NA	\$120,377	NA	\$152,229	NA

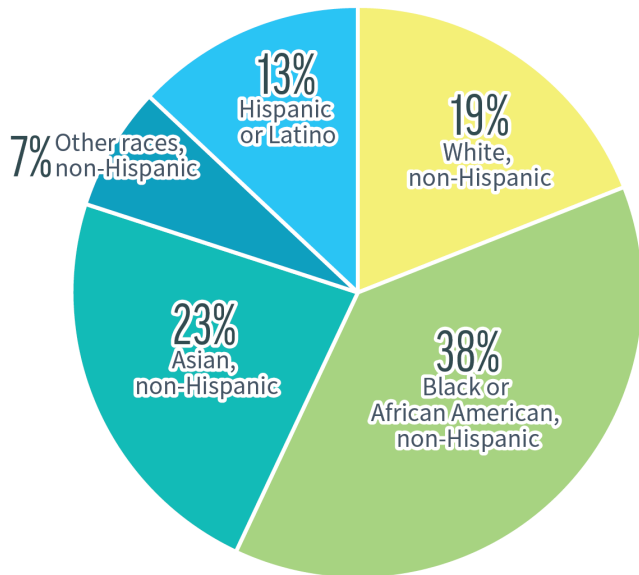
NA Not Applicable.

* Estimates are not reliable.

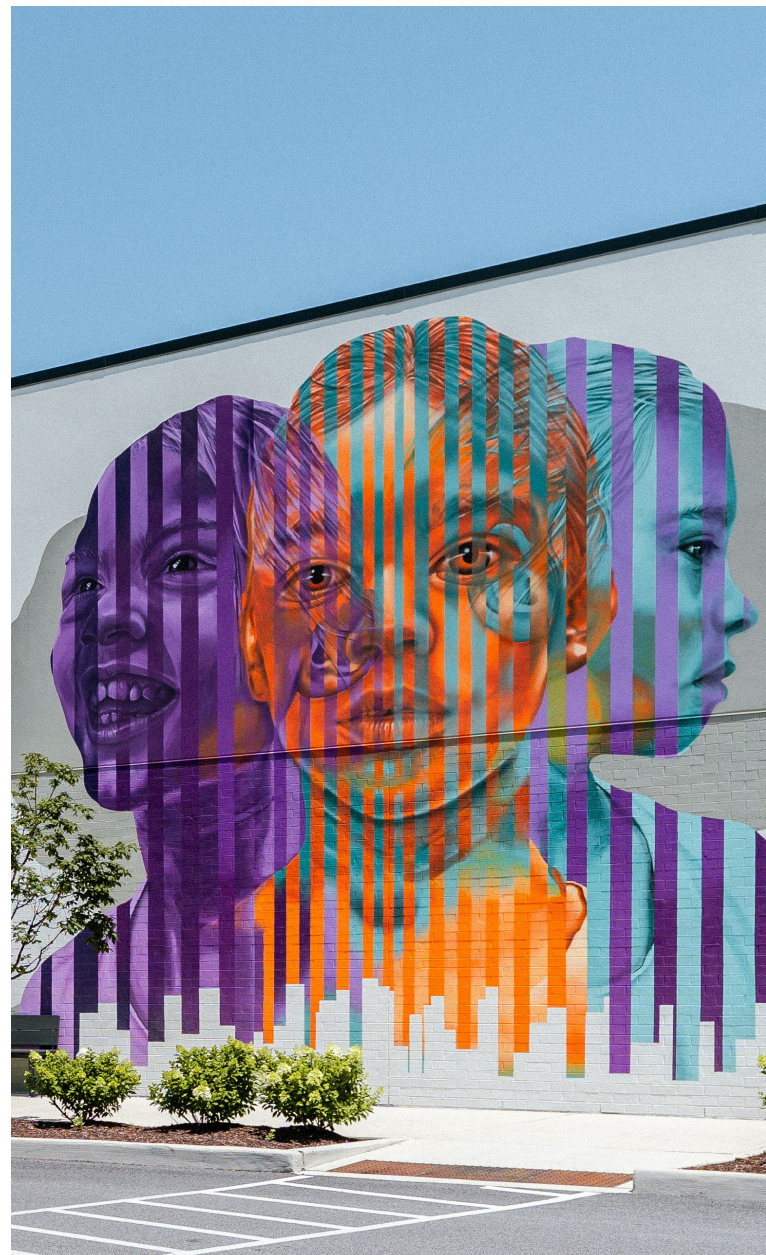
Estimates and percentages may not sum to totals due to rounding.

Source: U.S. Census Bureau, 2010, 2016, and 2022 American Community Survey, 5-year estimates.

Figure 7-1: Burtonsville, Percent by Race and Hispanic Ethnicity (2022)



Source: U.S. Census Bureau, 2022 American Community Survey, 5-year estimates.



HOUSING

Burtonsville’s housing stock is predominantly single-family homes, with detached units outnumbering townhouses and comprising approximately half of all housing units. The community’s sole multi-family complex, Country Place Apartments, is located off U.S. Route 29 and was built in 1978. Approximately 84% of all housing units were built before 2010, and the majority of units constructed since has been single-family detached homes. More than

three-quarters of households owned their homes in 2022. Average home values remained flat at around \$521,000 from 2010 onward. Average rental costs did not experience a significant increase, and the average gross rent of \$2,174 per month in 2022 was close to the county average of around \$2,100 per month.

Table 7-11: Burtonsville, Housing Units by Year Built, Age, and Type (2024)

Year Built	Total Units Number	Total Units %	Single-Family Detached Number	Single-Family Detached %	Single-Family Attached Number	Single-Family Attached %	Multi-Family Number	Multi-Family %
Total housing units	2,931	100%	1,498	100%	1,121	100%	312	100%
Before 1960	220	8%	220	15%	0	0%	0	0%
1960 to 1969	161	5%	161	11%	0	0%	0	0%
1970 to 1979	317	11%	125	8%	0	0%	192	62%
1980 to 1989	1,202	41%	435	29%	767	68%	0	0%
1990 to 1999	383	13%	157	10%	226	20%	0	0%
2000 to 2009	186	6%	151	10%	35	3%	0	0%
2010 or later	340	12%	247	16%	93	8%	0	0%
Unknown year	122	4%	2	0%	0	0%	120	38%
Average year built*	1986	NA	1983	NA	1991	NA	1979	NA
Average age*	38	NA	41	NA	33	NA	45	NA

NA Not Applicable.
 * Excludes housing units for which the year built is unknown.
 Percentages may not sum to totals due to rounding.
 Source: Montgomery Planning; Maryland State Department of Assessments and Taxation (August 2024).

Table 7-12: Burtonsville, Homeownership and Housing Affordability

Homeownership and Housing Affordability	2010 Estimate	2010 %	2016 Estimate	2016 %	2022 Estimate	2022 %
Homeownership rate	1,852	76%	2,115	73%	2,161	79%
Average homeowner costs (with mortgage)	\$3,210	NA	\$2,351	NA	\$2,804	NA
Average housing value (for homeowners)	\$521,202	NA	\$418,833	NA	\$521,428	NA
Rent-burdened households	*	*	486	67%	152	30%
Average gross rent	\$1,695	NA	\$1,790	NA	\$2,174	NA

NA Not Applicable.
 * Estimates are not reliable.
 Source: U.S. Census Bureau, 2010, 2016, and 2022 American Community Survey, 5-year estimates.