

LANDUSE CODE CORRECTION

CLRKGVIC PART-I - SHEET P0001

SDAT_LU_CODE	LUCODE_QC	ACCT #	DISTRICT	PREMISE_ADD_NO	PREMISE_ADDR_ST	PREMISE STRTYPE	NOTES
111	116	03415817	02	23800	BURDETTE FOREST	RD	
910	740	03415566	02	0	BURDETTE FOREST	RD	HOA SWM
111	116	03441075	02	23812	BURDETTE FOREST	RD	
111	116	03441086	02	23814	BURDETTE FOREST	RD	
111	116	03441020	02	23802	BURDETTE FOREST	RD	
111	116	03441031	02	23804	BURDETTE FOREST	RD	
111	116	03441042	02	23806	BURDETTE FOREST	RD	
111	116	03441053	02	23808	BURDETTE FOREST	RD	
111	116	03441064	02	23810	BURDETTE FOREST	RD	

Current SDAT County Landuse Code



Proposed SDAT County Landuse Code



OCTOBER2019 SDAT EXTRACT

LANDUSE CODE CORRECTION

CLRKGVC PART-I - SHEET P0002

SDAT_LU_CODE	LUCODE_QC	ACCT #	DISTRICT	PREMISE_ADD_NO	PREMISE_ADDR_ST	PREMISE STRTYPE	NOTES
111	116	03415681	02	23810	BRANCHBRIER	WAY	
111	116	03415692	02	23812	BRANCHBRIER	WAY	
111	116	03415704	02	23814	BRANCHBRIER	WAY	
111	116	03415635	02	23800	BRANCHBRIER	WAY	
111	116	03415646	02	23802	BRANCHBRIER	WAY	
111	116	03415657	02	23804	BRANCHBRIER	WAY	
111	116	03415668	02	23806	BRANCHBRIER	WAY	
111	116	03415670	02	23808	BRANCHBRIER	WAY	

Current SDAT County Landuse Code



OCTOBER2019 SDAT EXTRACT

Proposed SDAT County Landuse Code



LANDUSE CODE CORRECTION

CLRKGVIC PART-I - SHEET P0003

SDAT_LU_CODE	LUCODE_QC	ACCT #	DISTRICT	PREMISE_ADD_NO	PREMISE_ADDR_ST	PREMISE STRTYPE	NOTES
111	116	03415602	02	23807	BRANCHBRIER	WAY	
111	116	03415613	02	23809	BRANCHBRIER	WAY	
111	116	03415624	02	23811	BRANCHBRIER	WAY	
111	116	03415577	02	23801	BRANCHBRIER	WAY	
111	116	03415588	02	23803	BRANCHBRIER	WAY	
111	116	03415590	02	23805	BRANCHBRIER	WAY	

Current SDAT County Landuse Code



Proposed SDAT County Landuse Code



OCTOBER2019 SDAT EXTRACT

LANDUSE CODE CORRECTION

CLRKGVIC PART-I - SHEET P0004

SDAT_LU_CODE	LUCODE_QC	ACCT #	DISTRICT	PREMISE_ADD_NO	PREMISE_ADDR_ST	PREMISE STRTYPE	NOTES
111	116	03408322	02	12826	CLARKS CROSSING	DR	
111	116	03408377	02	12816	CLARKS CROSSING	DR	
111	116	03408388	02	12818	CLARKS CROSSING	DR	
111	116	03408390	02	12820	CLARKS CROSSING	DR	
111	116	03408402	02	12822	CLARKS CROSSING	DR	
111	116	03408413	02	12824	CLARKS CROSSING	DR	

Current SDAT County Landuse Code



Proposed SDAT County Landuse Code



OCTOBER2019 SDAT EXTRACT

LANDUSE CODE CORRECTION

CLRKGVIC PART-I - SHEET P0005

SDAT_LU_CODE	LUCODE_QC	ACCT #	DISTRICT	PREMISE_ADD_NO	PREMISE_ADDR_ST	PREMISE STRTYPE	NOTES
111	116	03441122	02	12906	CLARKSBURG SQUARE	RD	
111	116	03441097	02	12900	CLARKSBURG SQUARE	RD	
111	116	03441100	02	12902	CLARKSBURG SQUARE	RD	
111	116	03441111	02	12904	CLARKSBURG SQUARE	RD	
111	116	03441133	02	12908	CLARKSBURG SQUARE	RD	
111	116	03441144	02	12910	CLARKSBURG SQUARE	RD	
111	116	03441155	02	12912	CLARKSBURG SQUARE	RD	
111	116	03441166	02	12914	CLARKSBURG SQUARE	RD	

Current SDAT County Landuse Code



Proposed SDAT County Landuse Code



OCTOBER2019 SDAT EXTRACT

LANDUSE CODE CORRECTION

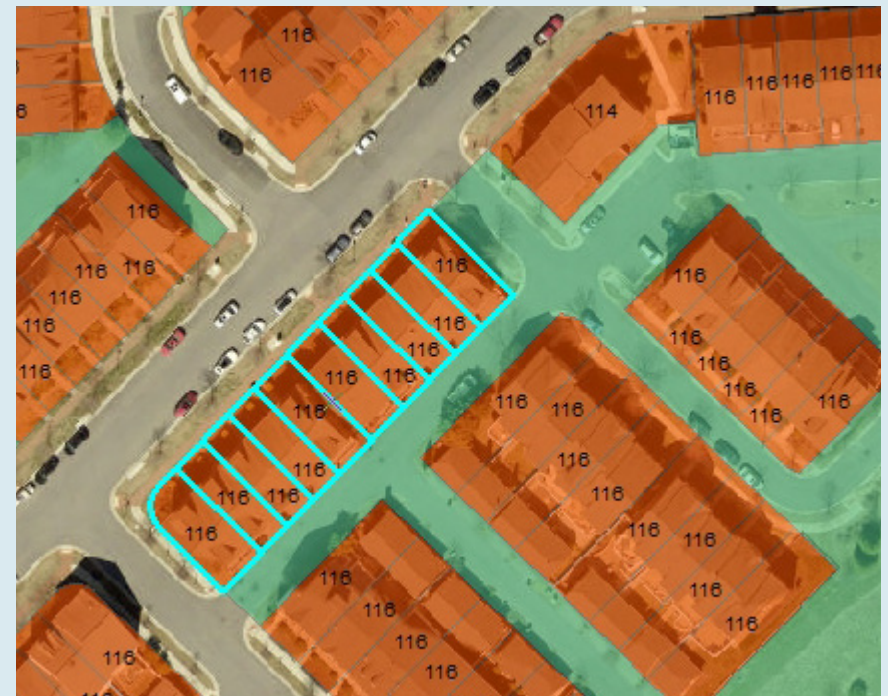
CLRKGVIC PART-I - SHEET P0006

SDAT_LU_CODE	LUCODE_QC	ACCT #	DISTRICT	PREMISE_ADD_NO	PREMISE_ADDR_ST	PREMISE STRTYPE	NOTES
111	116	03415715	02	12944	CLARKSBURG SQUARE	RD	
111	116	03415726	02	12946	CLARKSBURG SQUARE	RD	
111	116	03415737	02	12948	CLARKSBURG SQUARE	RD	
111	116	03415748	02	12950	CLARKSBURG SQUARE	RD	
111	116	03415750	02	12952	CLARKSBURG SQUARE	RD	
111	116	03415761	02	12954	CLARKSBURG SQUARE	RD	
111	116	03415772	02	12956	CLARKSBURG SQUARE	RD	
111	116	03415783	02	12958	CLARKSBURG SQUARE	RD	
111	116	03415794	02	12960	CLARKSBURG SQUARE	RD	
111	116	03415806	02	12962	CLARKSBURG SQUARE	RD	

Current SDAT County Landuse Code



Proposed SDAT County Landuse Code



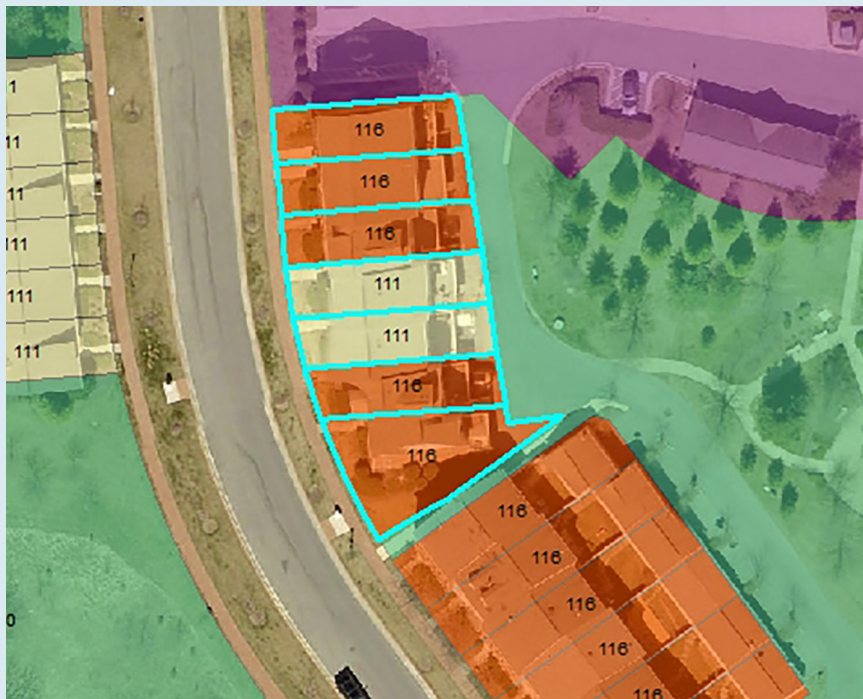
OCTOBER2019 SDAT EXTRACT

LANDUSE CODE CORRECTION

CLRKGVIC PART-I - SHEET P0007

SDAT_LU_CODE	LUCODE_QC	ACCT #	DISTRICT	PREMISE_ADD_NO	PREMISE_ADDR_ST	PREMISE STRTYPE	NOTES
116	116	03378348	02	12825	CLARKS CROSSING	DR	
116	116	03378350	02	12823	CLARKS CROSSING	DR	
116	116	03378361	02	12821	CLARKS CROSSING	DR	
111	116	03378372	02	12819	CLARKS CROSSING	DR	
111	116	03378383	02	12817	CLARKS CROSSING	DR	
116	116	03378394	02	12815	CLARKS CROSSING	DR	
116	116	03378406	02	12813	CLARKS CROSSING	DR	

Current SDAT County Landuse Code



Proposed SDAT County Landuse Code



OCTOBER2019 SDAT EXTRACT

LANDUSE CODE CORRECTION

CLRKGVIC PART-I - SHEET P0008

SDAT_LU_CODE	LUCODE_QC	ACCT #	DISTRICT	PREMISE_ADD_NO	PREMISE_ADDR_ST	PREMISE STRTYPE	NOTES
111	116	03433430	02	12947	CLARKSBURG SQUARE	RD	
111	116	03433452	02	12951	CLARKSBURG SQUARE	RD	
111	116	03433463	02	12953	CLARKSBURG SQUARE	RD	
111	116	03433474	02	12955	CLARKSBURG SQUARE	RD	
111	116	03433485	02	12957	CLARKSBURG SQUARE	RD	
111	116	03433496	02	12959	CLARKSBURG SQUARE	RD	
111	116	03433441	02	12949	CLARKSBURG SQUARE	RD	

Current SDAT County Landuse Code



Proposed SDAT County Landuse Code



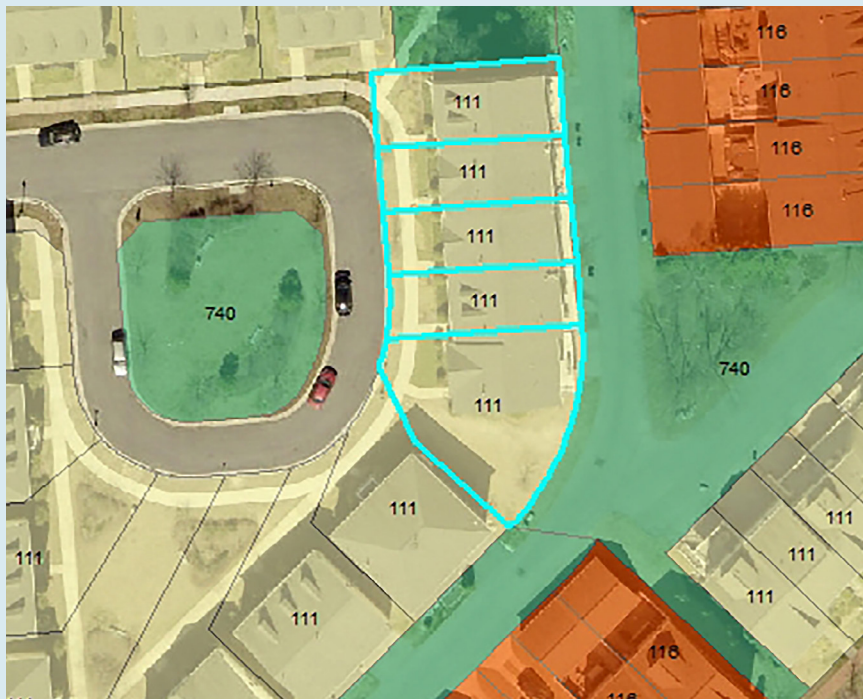
OCTOBER2019 SDAT EXTRACT

LANDUSE CODE CORRECTION

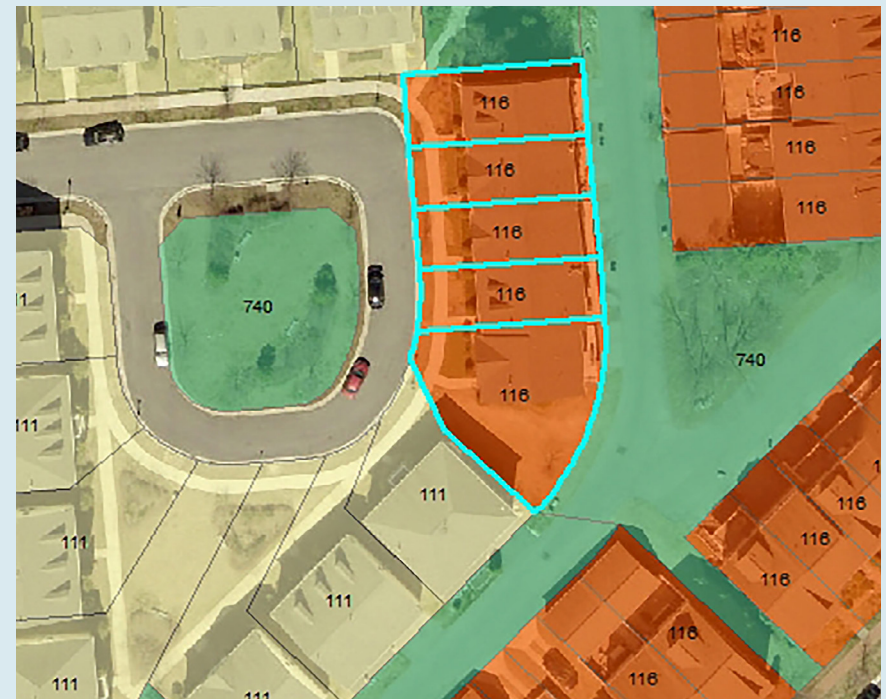
CLRKGVIC PART-I - SHEET P0009

SDAT_LU_CODE	LUCODE_QC	ACCT #	DISTRICT	PREMISE_ADD_NO	PREMISE_ADDR_ST	PREMISE STRTYPE	NOTES
111	116	03433281	02	12921	BENTON PARK	CIR	
111	116	03433292	02	12923	BENTON PARK	CIR	
111	116	03433257	02	12915	BENTON PARK	CIR	
111	116	03433268	02	12917	BENTON PARK	CIR	
111	116	03433270	02	12919	BENTON PARK	CIR	

Current SDAT County Landuse Code



Proposed SDAT County Landuse Code



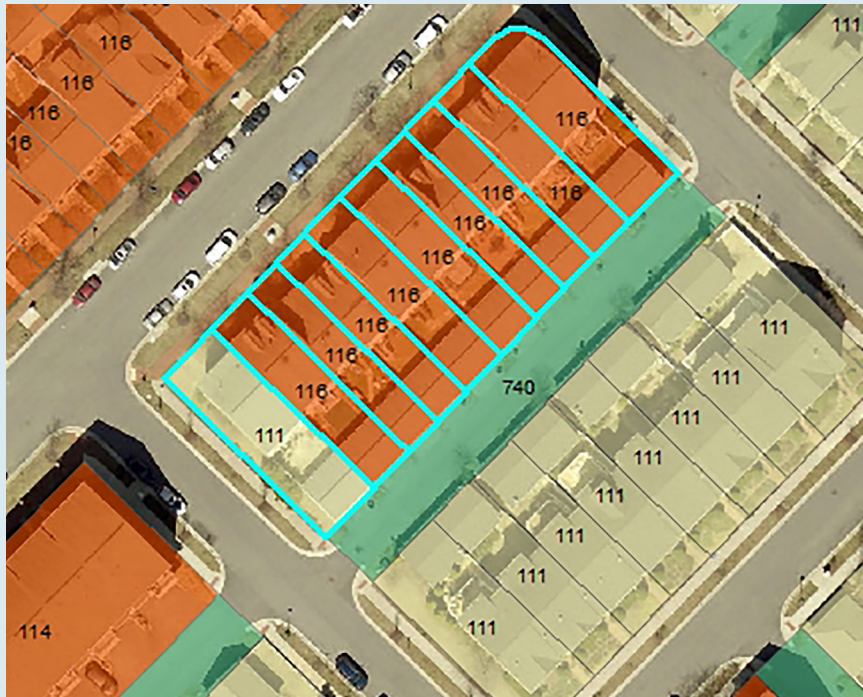
OCTOBER2019 SDAT EXTRACT

LANDUSE CODE CORRECTION

CLRKGVIC PART-I - SHEET P00010

SDAT_LU_CODE	LUCODE_QC	ACCT #	DISTRICT	PREMISE_ADD_NO	PREMISE_ADDR_ST	PREMISE STRTYPE	NOTES
111	03415431	03415431	02	13018	CLARKSBURG SQUARE	RD	
116	03415442	03415442	02	13016	CLARKSBURG SQUARE	RD	
116	03415453	03415453	02	13014	CLARKSBURG SQUARE	RD	
116	03415464	03415464	02	13012	CLARKSBURG SQUARE	RD	
116	03415475	03415475	02	13010	CLARKSBURG SQUARE	RD	
116	03415486	03415486	02	13008	CLARKSBURG SQUARE	RD	
116	03415497	03415497	02	13006	CLARKSBURG SQUARE	RD	
116	03415500	03415500	02	13004	CLARKSBURG SQUARE	RD	
116	03415511	03415511	02	13002	CLARKSBURG SQUARE	RD	
116	03415522	03415522	02	13000	CLARKSBURG SQUARE	RD	

Current SDAT County Landuse Code



Proposed SDAT County Landuse Code



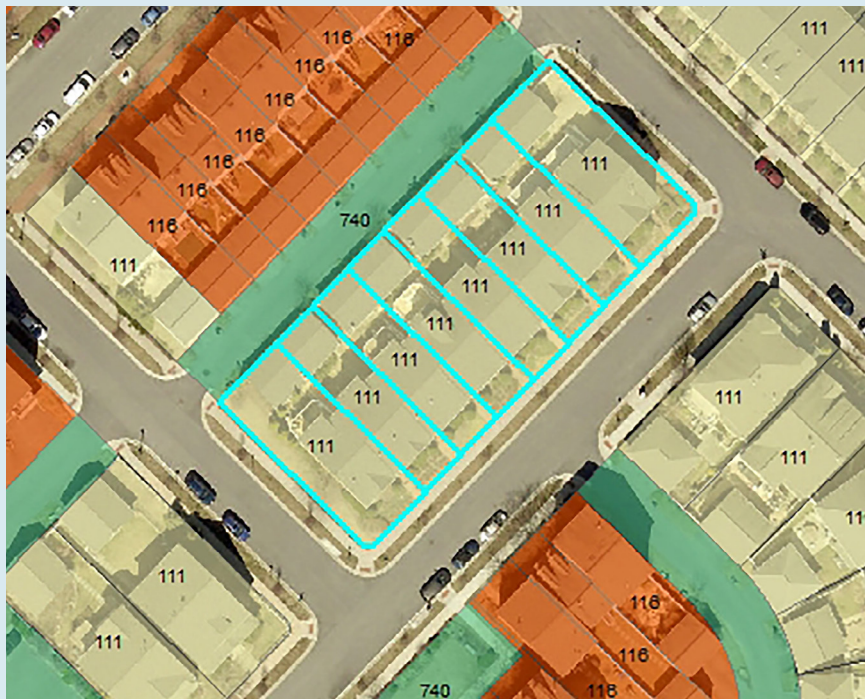
OCTOBER2019 SDAT EXTRACT

LANDUSE CODE CORRECTION

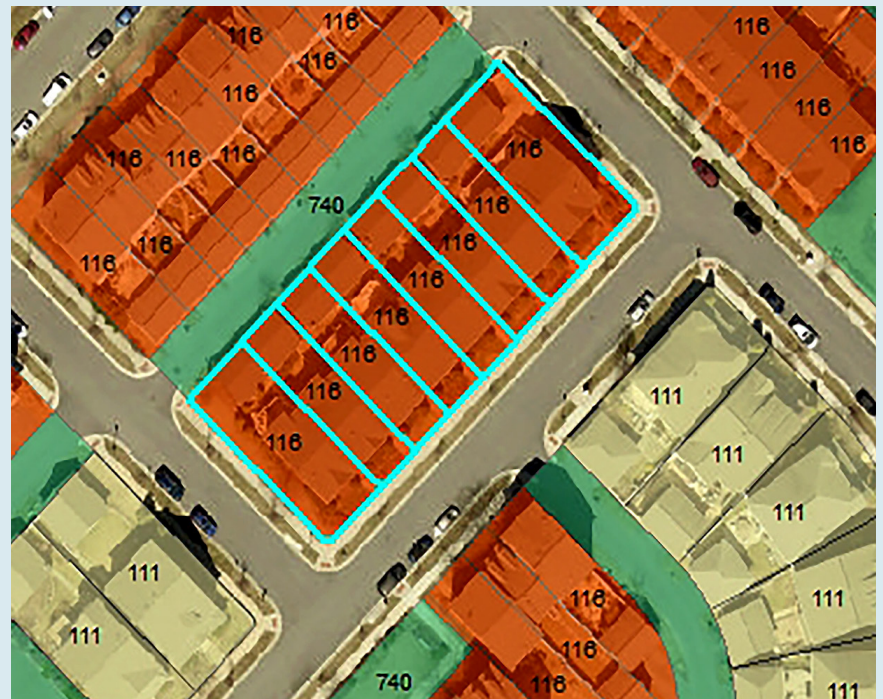
CLRKGVIC PART-I - SHEET P00011

SDAT_LU_CODE	LUCODE_QC	ACCT #	DISTRICT	PREMISE_ADD_NO	PREMISE_ADDR_ST	PREMISE STRTYPE	NOTES
111	116	03415418	02	13013	BLACKSMITH	DR	
111	116	03415351	02	13001	BLACKSMITH	DR	
111	116	03415362	02	13003	BLACKSMITH	DR	
111	116	03415373	02	13005	BLACKSMITH	DR	
111	116	03415384	02	13007	BLACKSMITH	DR	
111	116	03415395	02	13009	BLACKSMITH	DR	
111	116	03415420	02	13015	BLACKSMITH	DR	
111	116	03415407	02	13011	BLACKSMITH	DR	

Current SDAT County Landuse Code



Proposed SDAT County Landuse Code



OCTOBER2019 SDAT EXTRACT

LANDUSE CODE CORRECTION

CLRKGVIC PART-I - SHEET P00012

SDAT_LU_CODE	LUCODE_QC	ACCT #	DISTRICT	PREMISE_ADD_NO	PREMISE_ADDR_ST	PREMISE STRTYPE	NOTES
111	116	03433521	02	23913	TRADING POST	DR	
111	116	03433532	02	23915	TRADING POST	DR	
111	116	03433543	02	23917	TRADING POST	DR	
111	116	03433554	02	23919	TRADING POST	DR	
111	116	03433565	02	23921	TRADING POST	DR	
111	116	03433510	02	23911	TRADING POST	DR	

Current SDAT County Landuse Code



Proposed SDAT County Landuse Code



OCTOBER2019 SDAT EXTRACT

LANDUSE CODE CORRECTION

CLRKGVIC PART-I - SHEET P00013

SDAT_LU_CODE	LUCODE_QC	ACCT #	DISTRICT	PREMISE_ADD_NO	PREMISE_ADDR_ST	PREMISE STRTYPE	NOTES
910	740	03793948	02	0	SUGARLOAF CHAPEL	DR	HOA - ALLEY
116		03793950	02	23918	CATAWBA HILL	DR	
116		03794008	02	23906	CATAWBA HILL	DR	
116		03794010	02	23904	CATAWBA HILL	DR	
111	116	03794021	02	23902	CATAWBA HILL	DR	
116		03794032	02	23900	CATAWBA HILL	DR	
116		03793961	02	23916	CATAWBA HILL	DR	
116		03793972	02	23914	CATAWBA HILL	DR	
116		03793983	02	23912	CATAWBA HILL	DR	
116		03793994	02	23910	CATAWBA HILL	DR	

Current SDAT County Landuse Code



Proposed SDAT County Landuse Code



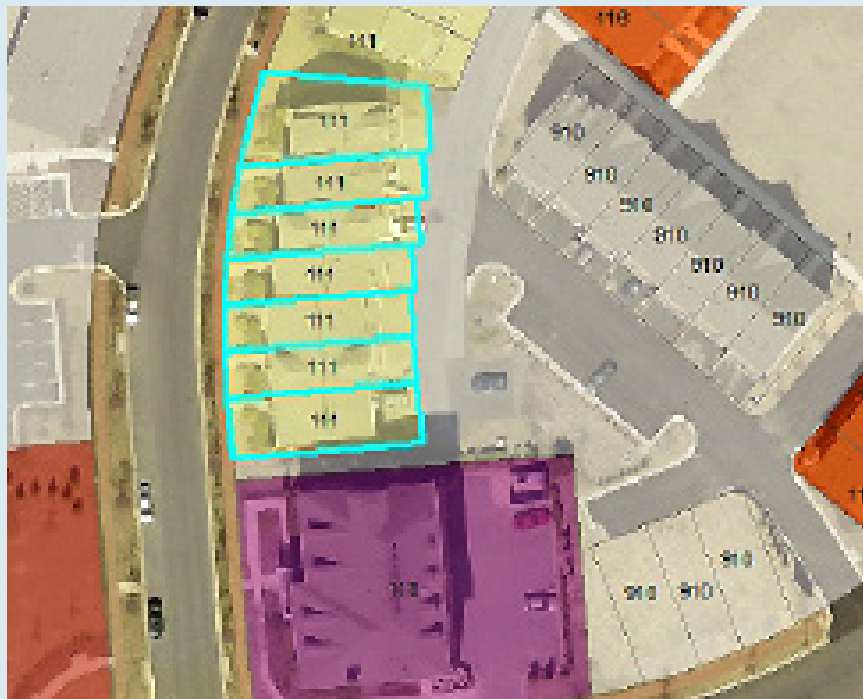
OCTOBER2019 SDAT EXTRACT

LANDUSE CODE CORRECTION

CLRKGVIC PART-I - SHEET P00014

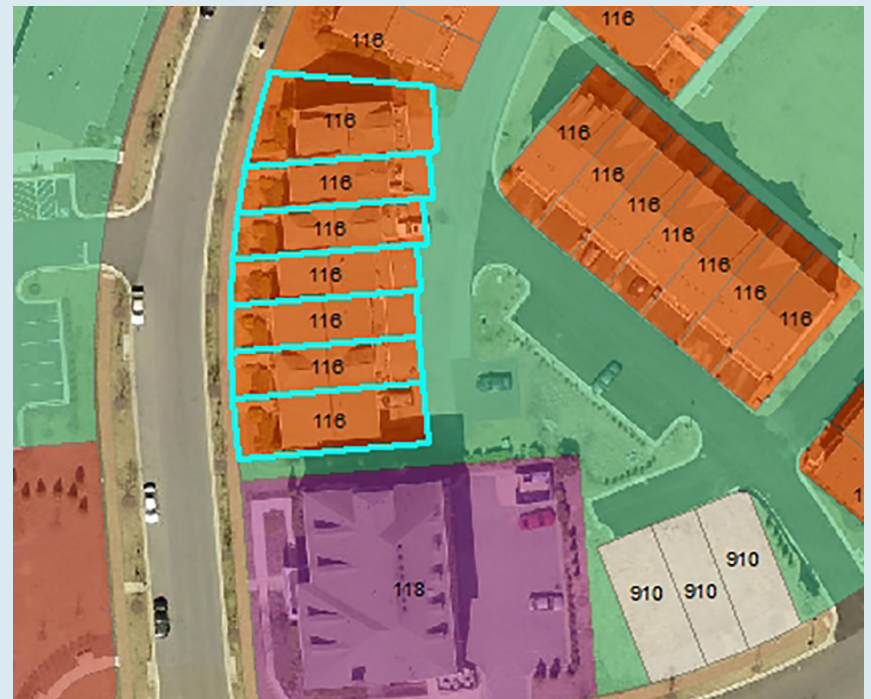
SDAT_LU_CODE	LUCODE_QC	ACCT #	DISTRICT	PREMISE_ADD_NO	PREMISE_ADDR_ST	PREMISE STRTYPE	NOTES
111	116	03408195	02	12915	CLARKS CROSSING	DR	
111	116	03408207	02	12917	CLARKS CROSSING	DR	
111	116	03408140	02	12905	CLARKS CROSSING	DR	
111	116	03408151	02	12907	CLARKS CROSSING	DR	
111	116	03408162	02	12909	CLARKS CROSSING	DR	
111	116	03408173	02	12911	CLARKS CROSSING	DR	
111	116	03408184	02	12913	CLARKS CROSSING	DR	

Current SDAT County Landuse Code



OCTOBER2019 SDAT EXTRACT

Proposed SDAT County Landuse Code

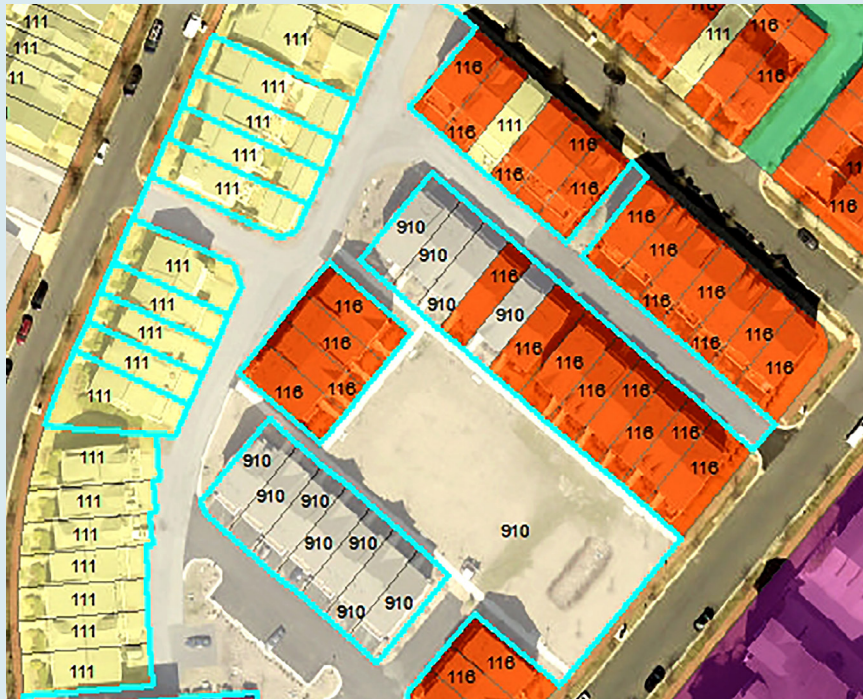


LANDUSE CODE CORRECTION

CLRKGVIC PART-I - SHEET P00015

SDAT_LU_CODE	LUCODE_QC	ACCT #	DISTRICT	PREMISE_ADD_NO	PREMISE_ADDR_ST	PREMISE STRTYPE	NOTES
111	116	03408218	02	12919	CLARKS CROSSING	DR	
111	116	03408220	02	12921	CLARKS CROSSING	DR	
111	116	03408231	02	12923	CLARKS CROSSING	DR	
111	116	03408242	02	12925	CLARKS CROSSING	DR	
111	116	03408253	02	12927	CLARKS CROSSING	DR	
111	116	03408058	02	12931	CLARKS CROSSING	DR	
111	116	03408060	02	12933	CLARKS CROSSING	DR	
111	116	03408071	02	12935	CLARKS CROSSING	DR	
111	116	03408082	02	12937	CLARKS CROSSING	DR	
910	740	03799796	02	0	CLARKSBURG SQUARE	RD	HOA: POS, ALLEY

Current SDAT County Landuse Code



OCTOBER2019 SDAT EXTRACT

Proposed SDAT County Landuse Code

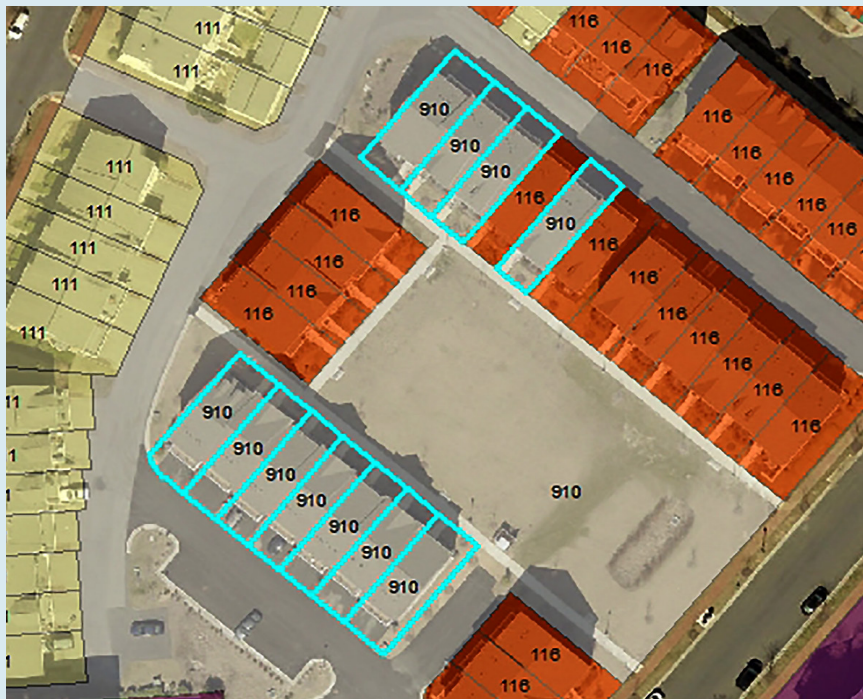


LANDUSE CODE CORRECTION

CLRKGVIC PART-I - SHEET P00016

SDAT_LU_CODE	LUCODE_QC	ACCT #	DISTRICT	PREMISE_ADD_NO	PREMISE_ADDR_ST	PREMISE STRTYPE	NOTES
910	116	03800087	02	12873	CLARKSBURG SQUARE	RD	
910	116	03800098	02	12875	CLARKSBURG SQUARE	RD	
910	116	03799967	02	12845	CLARKSBURG SQUARE	RD	
910	116	03799978	02	12847	CLARKSBURG SQUARE	RD	
910	116	03799945	02	12841	CLARKSBURG SQUARE	RD	
910	116	03800032	02	12863	CLARKSBURG SQUARE	RD	
910	116	03800043	02	12865	CLARKSBURG SQUARE	RD	
910	116	03800054	02	12867	CLARKSBURG SQUARE	RD	
910	116	03800065	02	12869	CLARKSBURG SQUARE	RD	
910	116	03800076	02	12871	CLARKSBURG SQUARE	RD	
910	116	03799980	02	12849	CLARKSBURG SQUARE	RD	

Current SDAT County Landuse Code



Proposed SDAT County Landuse Code



OCTOBER2019 SDAT EXTRACT

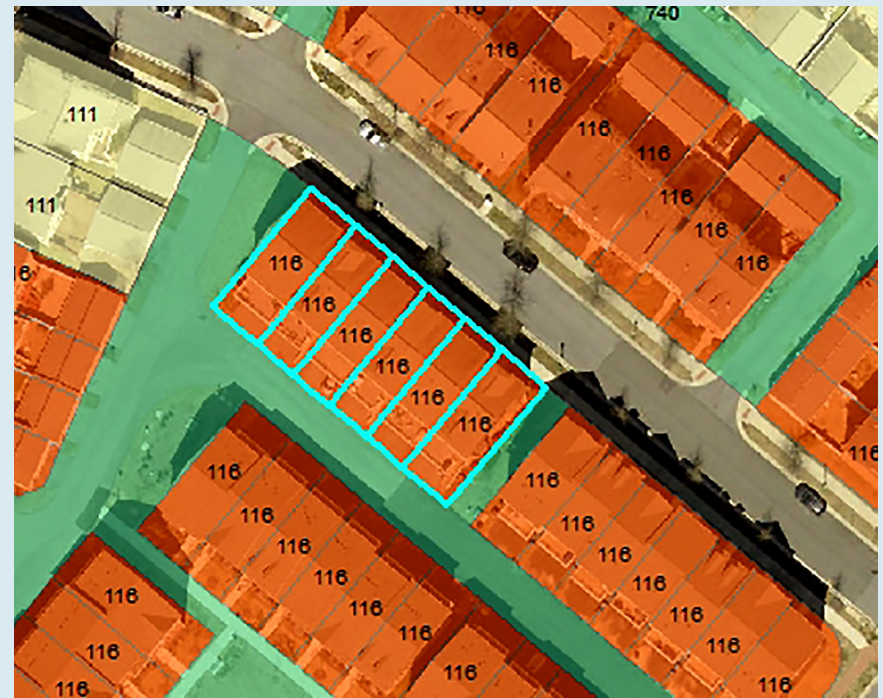
LANDUSE CODE CORRECTION

CLRKGVIC PART-I - SHEET P00017

SDAT_LU_CODE	LUCODE_QC	ACCT #	DISTRICT	PREMISE_ADD_NO	PREMISE_ADDR_ST	PREMISE STRTYPE	NOTES
116	116	03408311	02	23754	CLARKSMEADE	DR	
116	116	03408264	02	23764	CLARKSMEADE	DR	
116	116	03408275	02	23762	CLARKSMEADE	DR	
111	116	03408286	02	23760	CLARKSMEADE	DR	
116	116	03408297	02	23758	CLARKSMEADE	DR	
116	116	03408300	02	23756	CLARKSMEADE	DR	

Current SDAT County Landuse Code

Proposed SDAT County Landuse Code



OCTOBER2019 SDAT EXTRACT

LANDUSE CODE CORRECTION

CLRKGVIC PART-I - SHEET P00018

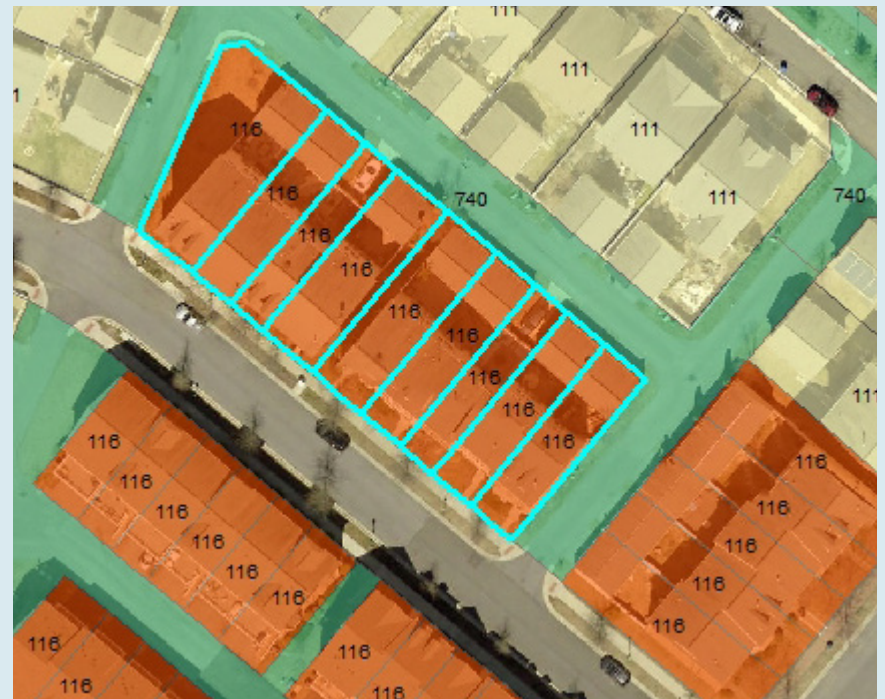
SDAT_LU_CODE	LUCODE_QC	ACCT #	DISTRICT	PREMISE_ADD_NO	PREMISE_ADDR_ST	PREMISE STRTYPE	NOTES
116	116	03407874	02	23739	CLARKSMEADE	DR	
116	116	03407885	02	23741	CLARKSMEADE	DR	
111	116	03407896	02	23743	CLARKSMEADE	DR	
116	116	03407908	02	23745	CLARKSMEADE	DR	
116	116	03407910	02	23747	CLARKSMEADE	DR	
116	116	03407921	02	23751	CLARKSMEADE	DR	
116	116	03407932	02	23753	CLARKSMEADE	DR	
116	116	03407943	02	23755	CLARKSMEADE	DR	
116	116	03407954	02	23757	CLARKSMEADE	DR	

Current SDAT County Landuse Code



OCTOBER2019 SDAT EXTRACT

Proposed SDAT County Landuse Code



LANDUSE CODE CORRECTION

SDAT_LU_CODE	LUCODE_QC	ACCT #	DISTRICT	PREMISE_ADD_NO	PREMISE_ADDR_ST	PREMISE STRTYPE	NOTES
111	116	03424710	02	23049	BIRCH MEAD	RD	
111	116	03424721	02	23051	BIRCH MEAD	RD	
111	116	03424732	02	23053	BIRCH MEAD	RD	
111	116	03424743	02	23055	BIRCH MEAD	RD	
111	116	03424754	02	23057	BIRCH MEAD	RD	
111	116	03424765	02	23059	BIRCH MEAD	RD	
111	116	03424776	02	23061	BIRCH MEAD	RD	

Current SDAT County Landuse Code



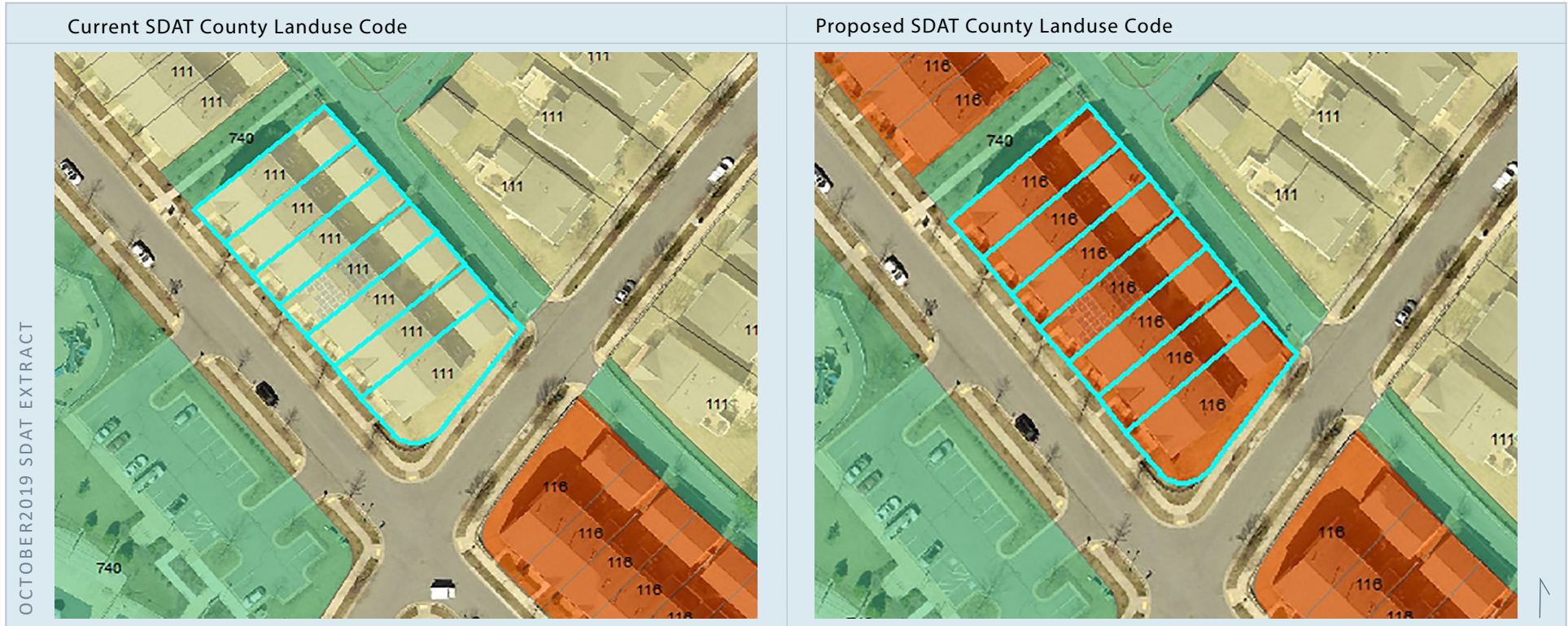
Proposed SDAT County Landuse Code



OCTOBER2019 SDAT EXTRACT

LANDUSE CODE CORRECTION

SDAT_LU_CODE	LUCODE_QC	ACCT #	DISTRICT	PREMISE_ADD_NO	PREMISE_ADDR_ST	PREMISE STRTYPE	NOTES
111	116	03424708	02	23047	BIRCH MEAD	RD	
111	116	03424641	02	23035	BIRCH MEAD	RD	
111	116	03424652	02	23037	BIRCH MEAD	RD	
111	116	03424663	02	23039	BIRCH MEAD	RD	
111	116	03424674	02	23041	BIRCH MEAD	RD	
111	116	03424685	02	23043	BIRCH MEAD	RD	
111	116	03424696	02	23045	BIRCH MEAD	RD	



LANDUSE CODE CORRECTION

CLRKGVIC PART-I - SHEET P00021

SDAT_LU_CODE	LUCODE_QC	ACCT #	DISTRICT	PREMISE_ADD_NO	PREMISE_ADDR_ST	PREMISE STRTYPE	NOTES
111	116	03417042	02	13101	SUTLER SQUARE	TER	
111	116	03417053	02	13103	SUTLER SQUARE	TER	
111	116	03417064	02	13105	SUTLER SQUARE	TER	
111	116	03417075	02	13107	SUTLER SQUARE	TER	
111	116	03417086	02	13109	SUTLER SQUARE	TER	
111	116	03417097	02	13113	SUTLER SQUARE	TER	
111	116	03417100	02	13115	SUTLER SQUARE	TER	
111	116	03417111	02	13117	SUTLER SQUARE	TER	
111	116	03417122	02	13119	SUTLER SQUARE	TER	
111	116	03417133	02	13121	SUTLER SQUARE	TER	
910	740	03457322	02	0	BREWERS TAVERN	TER	HOA MAJ POS

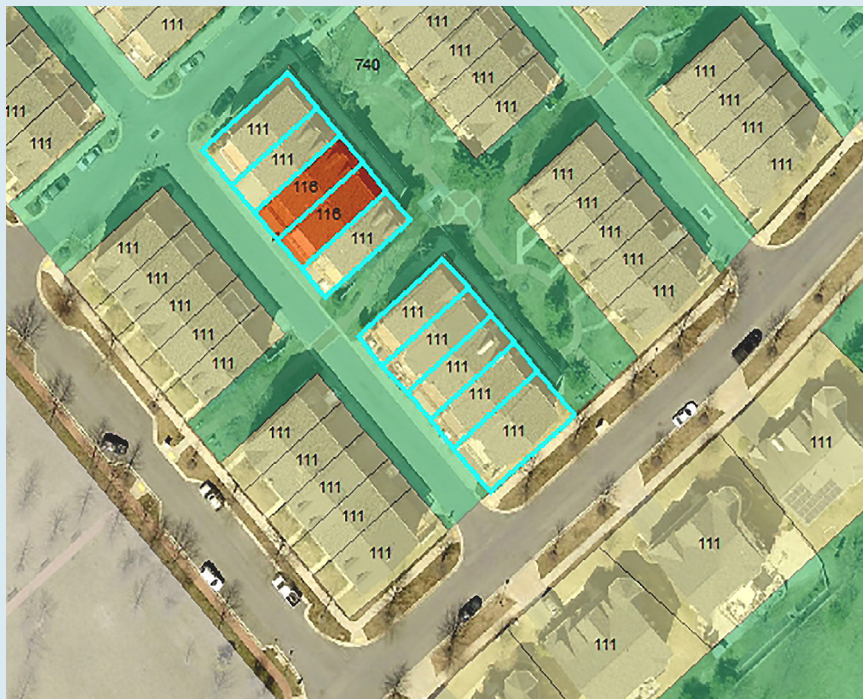


LANDUSE CODE CORRECTION

CLRKGVIC PART-I - SHEET P00022

SDAT_LU_CODE	LUCODE_QC	ACCT #	DISTRICT	PREMISE_ADD_NO	PREMISE_ADDR_ST	PREMISE STRTYPE	NOTES
111	116	03416982	02	23309	BREWERS TAVERN	WAY	
111	116	03416993	02	13021	SAINT CLAIR	RD	
111	116	03417007	02	13023	SAINT CLAIR	RD	
111	116	03417018	02	13025	SAINT CLAIR	RD	
111	116	03417020	02	13027	SAINT CLAIR	RD	
111	116	03417031	02	13029	SAINT CLAIR	RD	
111	116	03416947	02	23301	BREWERS TAVERN	WAY	
111	116	03416958	02	23303	BREWERS TAVERN	WAY	
116	116	03416960	02	23305	BREWERS TAVERN	WAY	
116	116	03416971	02	23307	BREWERS TAVERN	WAY	

Current SDAT County Landuse Code



Proposed SDAT County Landuse Code



OCTOBER2019 SDAT EXTRACT

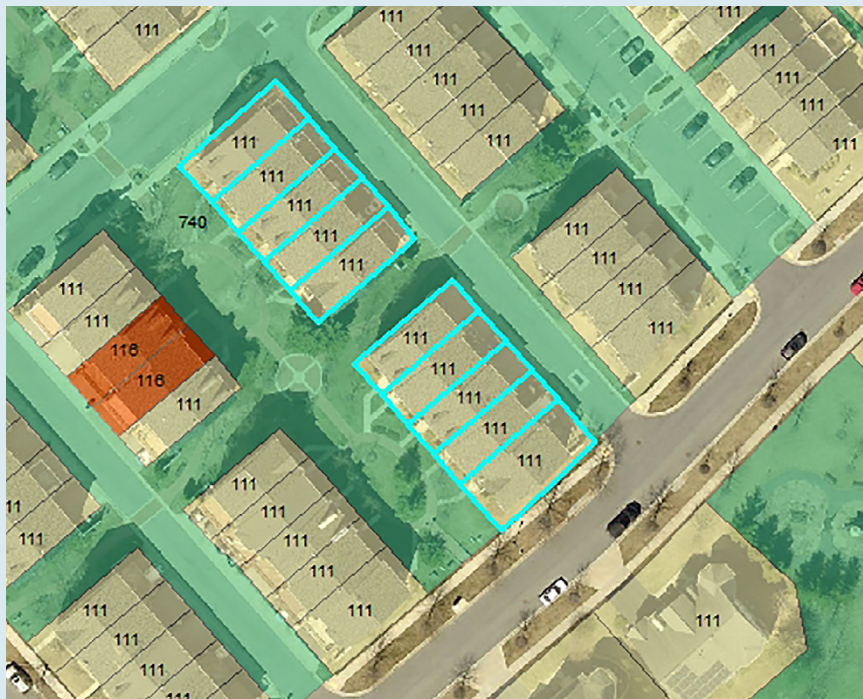


LANDUSE CODE CORRECTION

CLRKGVIC PART-I - SHEET P00023

SDAT_LU_CODE	LUCODE_QC	ACCT #	DISTRICT	PREMISE_ADD_NO	PREMISE_ADDR_ST	PREMISE STRTYPE	NOTES
111	116	03416903	02	23313	BREWERS TAVERN	WAY	
111	116	03416856	02	13013	SAINT CLAIR	RD	
111	116	03416867	02	13015	SAINT CLAIR	RD	
111	116	03416878	02	13017	SAINT CLAIR	RD	
111	116	03416880	02	13019	SAINT CLAIR	RD	
111	116	03416891	02	23311	BREWERS TAVERN	WAY	
111	116	03416845	02	13011	SAINT CLAIR	RD	
111	116	03416914	02	23315	BREWERS TAVERN	WAY	
111	116	03416925	02	23317	BREWERS TAVERN	WAY	
111	116	03416936	02	23319	BREWERS TAVERN	WAY	

Current SDAT County Landuse Code



Proposed SDAT County Landuse Code



OCTOBER2019 SDAT EXTRACT

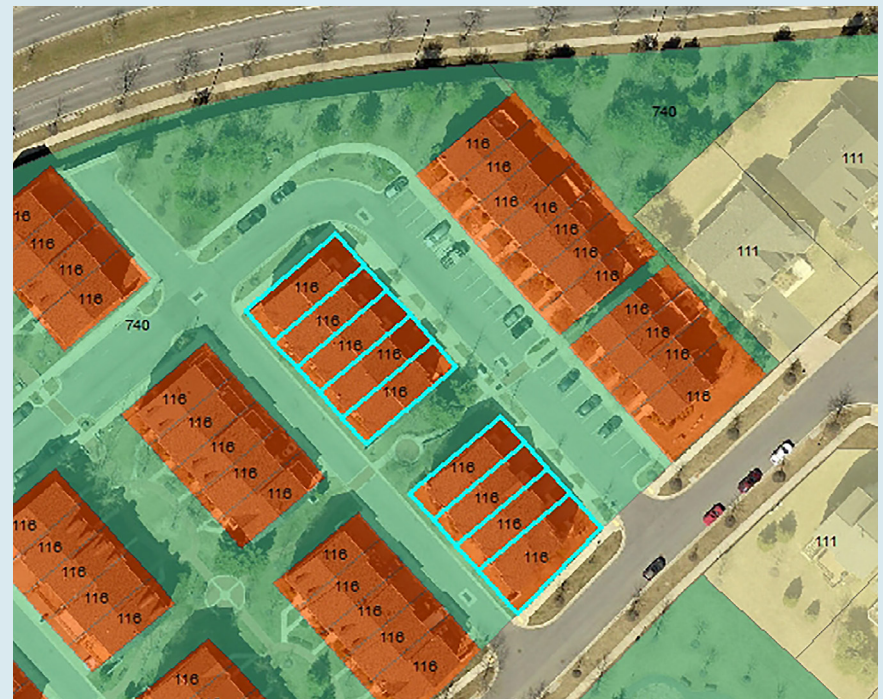
LANDUSE CODE CORRECTION

SDAT_LU_CODE	LUCODE_QC	ACCT #	DISTRICT	PREMISE_ADD_NO	PREMISE_ADDR_ST	PREMISE STRTYPE	NOTES
111	116	03416798	02	23331	BREWERS TAVERN	WAY	
111	116	03416801	02	23335	BREWERS TAVERN	WAY	
111	116	03416812	02	23337	BREWERS TAVERN	WAY	
111	116	03416823	02	23339	BREWERS TAVERN	WAY	
111	116	03416834	02	23341	BREWERS TAVERN	WAY	
111	116	03416754	02	23323	BREWERS TAVERN	WAY	
111	116	03416765	02	23325	BREWERS TAVERN	WAY	
111	116	03416776	02	23327	BREWERS TAVERN	WAY	
111	116	03416787	02	23329	BREWERS TAVERN	WAY	

Current SDAT County Landuse Code



Proposed SDAT County Landuse Code



OCTOBER2019 SDAT EXTRACT

LANDUSE CODE CORRECTION

CLRKGVIC PART-I - SHEET P00025

SDAT_LU_CODE	LUCODE_QC	ACCT #	DISTRICT	PREMISE_ADD_NO	PREMISE_ADDR_ST	PREMISE STRTYPE	NOTES
111	116	03435611	02	23324	BREWERS TAVERN	WAY	
111	116	03435622	02	23322	BREWERS TAVERN	WAY	
111	116	03435633	02	23320	BREWERS TAVERN	WAY	
111	116	03435586	02	23330	BREWERS TAVERN	WAY	
111	116	03435597	02	23328	BREWERS TAVERN	WAY	
111	116	03435600	02	23326	BREWERS TAVERN	WAY	
111	116	03435531	02	23342	BREWERS TAVERN	WAY	
111	116	03435542	02	23340	BREWERS TAVERN	WAY	
111	116	03435553	02	23338	BREWERS TAVERN	WAY	
111	116	03435564	02	23336	BREWERS TAVERN	WAY	
111	116	03435575	02	23332	BREWERS TAVERN	WAY	

Current SDAT County Landuse Code



Proposed SDAT County Landuse Code



OCTOBER2019 SDAT EXTRACT

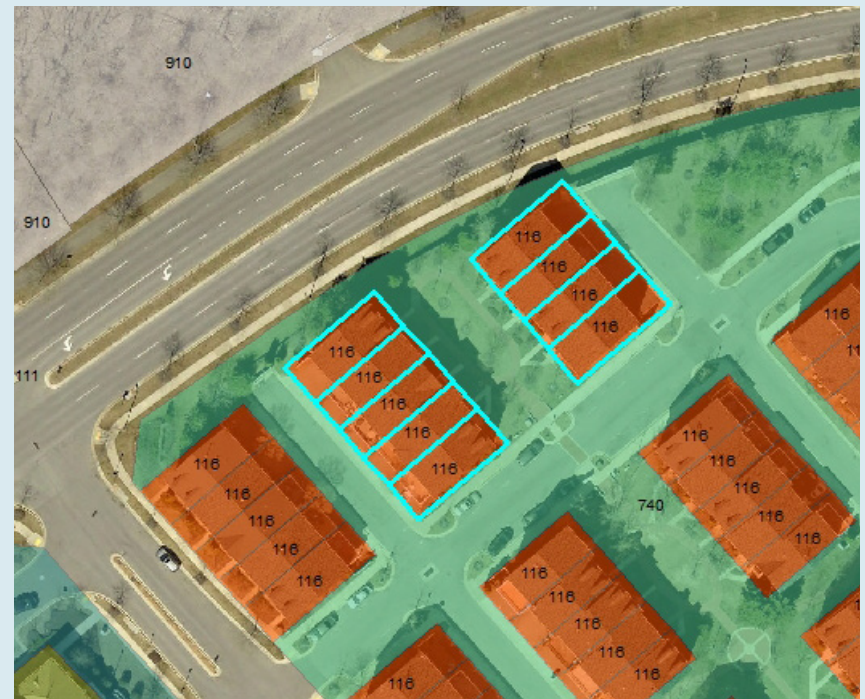
LANDUSE CODE CORRECTION

CLRKGVIC PART-I - SHEET P00026

SDAT_LU_CODE	LUCODE_QC	ACCT #	DISTRICT	PREMISE_ADD_NO	PREMISE_ADDR_ST	PREMISE STRTYPE	NOTES
111	116	03417190	02	23308	BREWERS TAVERN	WAY	
111	116	03417202	02	23306	BREWERS TAVERN	WAY	
111	116	03417213	02	23304	BREWERS TAVERN	WAY	
111	116	03417224	02	23302	BREWERS TAVERN	WAY	
111	116	03417235	02	23300	BREWERS TAVERN	WAY	
111	116	03417246	02	23316	BREWERS TAVERN	WAY	
111	116	03417257	02	23314	BREWERS TAVERN	WAY	
111	116	03417268	02	23312	BREWERS TAVERN	WAY	
111	116	03417270	02	23310	BREWERS TAVERN	WAY	

Current SDAT County Landuse Code

Proposed SDAT County Landuse Code



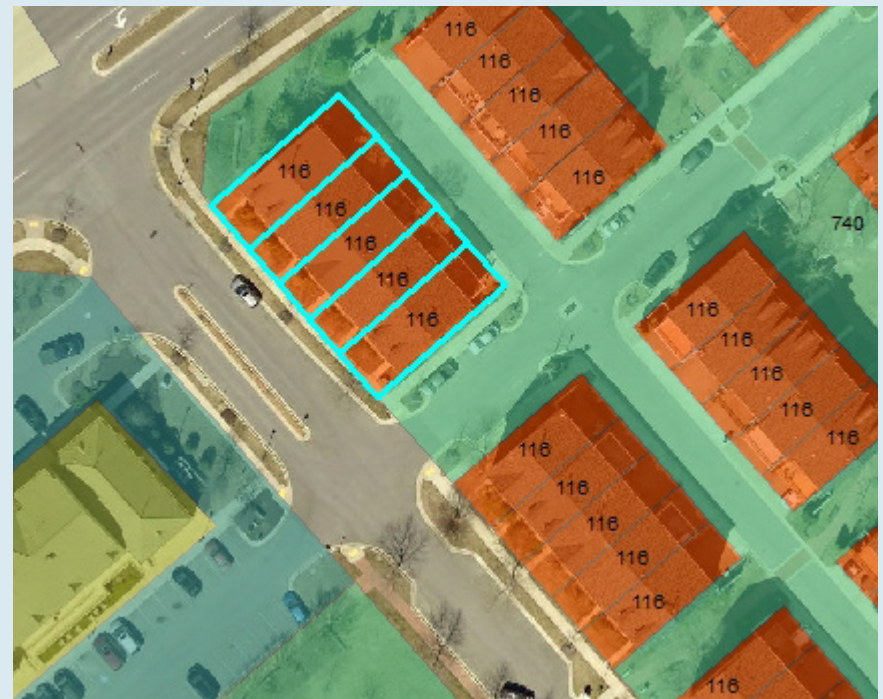
OCTOBER2019 SDAT EXTRACT

LANDUSE CODE CORRECTION

SDAT_LU_CODE	LUCODE_QC	ACCT #	DISTRICT	PREMISE_ADD_NO	PREMISE_ADDR_ST	PREMISE STRTYPE	NOTES
111	116	03417166	02	13129	SUTLER SQUARE	TER	
111	116	03417177	02	13131	SUTLER SQUARE	TER	
111	116	03417188	02	13133	SUTLER SQUARE	TER	
111	116	03417144	02	13125	SUTLER SQUARE	TER	
111	116	03417155	02	13127	SUTLER SQUARE	TER	

Current SDAT County Landuse Code

Proposed SDAT County Landuse Code



OCTOBER2019 SDAT EXTRACT



LANDUSE CODE CORRECTION

CLRKGVIC PART-I - SHEET P00028

SDAT_LU_CODE	LUCODE_QC	ACCT #	DISTRICT	PREMISE_ADD_NO	PREMISE_ADDR_ST	PREMISE STRTYPE	NOTES
111	116	03451677	02	12921	ETHEL ROSE	WAY	
111	116	03451688	02	12923	ETHEL ROSE	WAY	
111	116	03451690	02	12925	ETHEL ROSE	WAY	
111	116	03451644	02	12915	ETHEL ROSE	WAY	
111	116	03451655	02	12917	ETHEL ROSE	WAY	
111	116	03451666	02	12919	ETHEL ROSE	WAY	
111	116	03451702	02	12927	ETHEL ROSE	WAY	
111	116	03451633	02	12913	ETHEL ROSE	WAY	

Current SDAT County Landuse Code



OCTOBER2019 SDAT EXTRACT

Proposed SDAT County Landuse Code



LANDUSE CODE CORRECTION

CLRKGVIC PART-I - SHEET P00029

SDAT_LU_CODE	LUCODE_QC	ACCT #	DISTRICT	PREMISE_ADD_NO	PREMISE_ADDR_ST	PREMISE STRTYPE	NOTES
111	116	03451484	02	12809	ETHEL ROSE	WAY	
111	116	03451495	02	12811	ETHEL ROSE	WAY	
111	116	03451507	02	12813	ETHEL ROSE	WAY	
111	116	03451518	02	12815	ETHEL ROSE	WAY	
111	116	03451520	02	12817	ETHEL ROSE	WAY	
111	116	03451531	02	12819	ETHEL ROSE	WAY	
111	116	03451542	02	12821	ETHEL ROSE	WAY	
111	116	03451553	02	12823	ETHEL ROSE	WAY	
111	116	03451564	02	12825	ETHEL ROSE	WAY	

Current SDAT County Landuse Code

Proposed SDAT County Landuse Code



OCTOBER2019 SDAT EXTRACT



LANDUSE CODE CORRECTION

CLRKGVIC PART-I - SHEET P00030

SDAT_LU_CODE	LUCODE_QC	ACCT #	DISTRICT	PREMISE_ADD_NO	PREMISE_ADDR_ST	PREMISE STRTYPE	NOTES
111	116	03451575	02	12901	ETHEL ROSE	WAY	
111	116	03451586	02	12903	ETHEL ROSE	WAY	
111	116	03451597	02	12905	ETHEL ROSE	WAY	
111	116	03451600	02	12907	ETHEL ROSE	WAY	
111	116	03451611	02	12909	ETHEL ROSE	WAY	
111	116	03451622	02	12911	ETHEL ROSE	WAY	

Current SDAT County Landuse Code



OCTOBER2019 SDAT EXTRACT

Proposed SDAT County Landuse Code



LANDUSE CODE CORRECTION

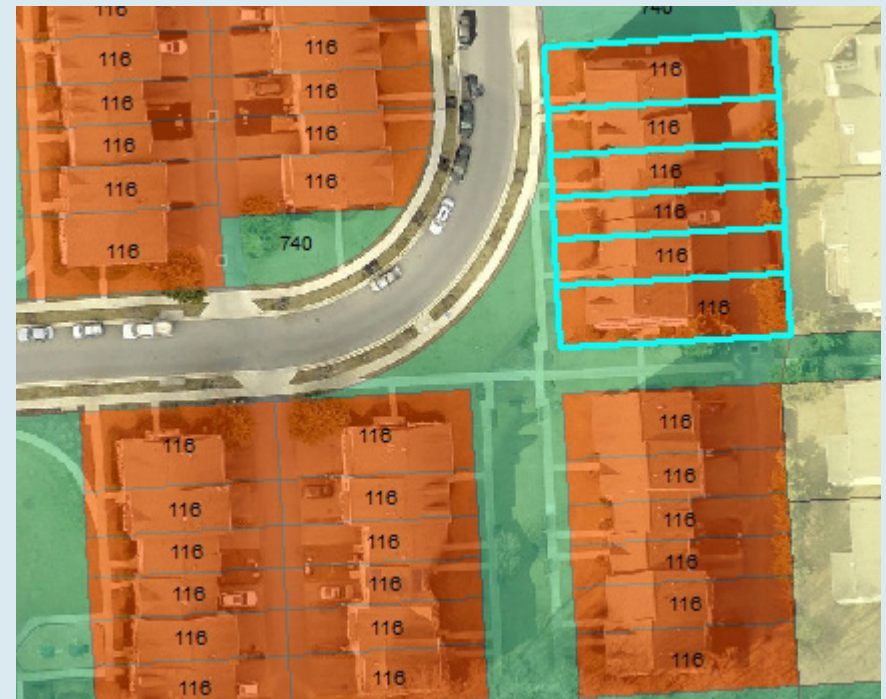
CLRKGVIC PART-I - SHEET P00031

SDAT_LU_CODE	LUCODE_QC	ACCT #	DISTRICT	PREMISE_ADD_NO	PREMISE_ADDR_ST	PREMISE STRTYPE	NOTES
111	116	03451030	02	12812	ETHEL ROSE	WAY	
111	116	03451041	02	12814	ETHEL ROSE	WAY	
111	116	03451052	02	12816	ETHEL ROSE	WAY	
111	116	03451063	02	12818	ETHEL ROSE	WAY	
111	116	03451074	02	12820	ETHEL ROSE	WAY	
111	116	03451085	02	12822	ETHEL ROSE	WAY	

Current SDAT County Landuse Code



Proposed SDAT County Landuse Code



OCTOBER2019 SDAT EXTRACT



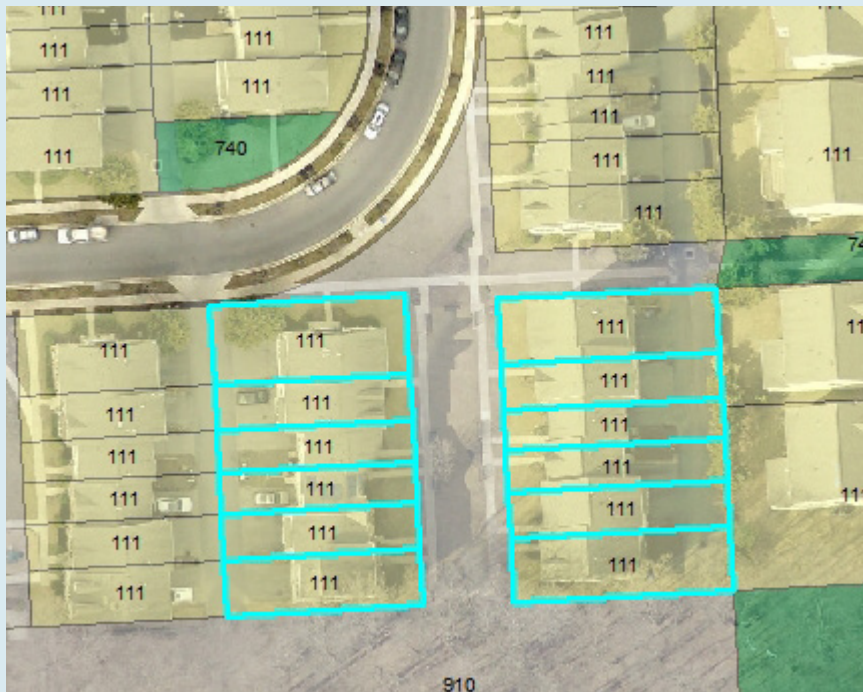
LANDUSE CODE CORRECTION

CLRKGVIC PART-I - SHEET P00032

SDAT_LU_CODE	LUCODE_QC	ACCT #	DISTRICT	PREMISE_ADD_NO	PREMISE_ADDR_ST	PREMISE STRTYPE	NOTES
111	116	03451154	02	12836	ETHEL ROSE	WAY	
111	116	03451165	02	12838	ETHEL ROSE	WAY	
111	116	03451176	02	12840	ETHEL ROSE	WAY	
111	116	03451187	02	12842	ETHEL ROSE	WAY	
111	116	03451198	02	12844	ETHEL ROSE	WAY	
111	116	03451201	02	12846	ETHEL ROSE	WAY	
111	116	03451132	02	12832	ETHEL ROSE	WAY	
111	116	03451143	02	12834	ETHEL ROSE	WAY	
111	116	03451108	02	12826	ETHEL ROSE	WAY	
111	116	03451110	02	12828	ETHEL ROSE	WAY	
111	116	03451121	02	12830	ETHEL ROSE	WAY	
111	116	03451096	02	12824	ETHEL ROSE	WAY	

Current SDAT County Landuse Code

Proposed SDAT County Landuse Code



OCTOBER2019 SDAT EXTRACT

910

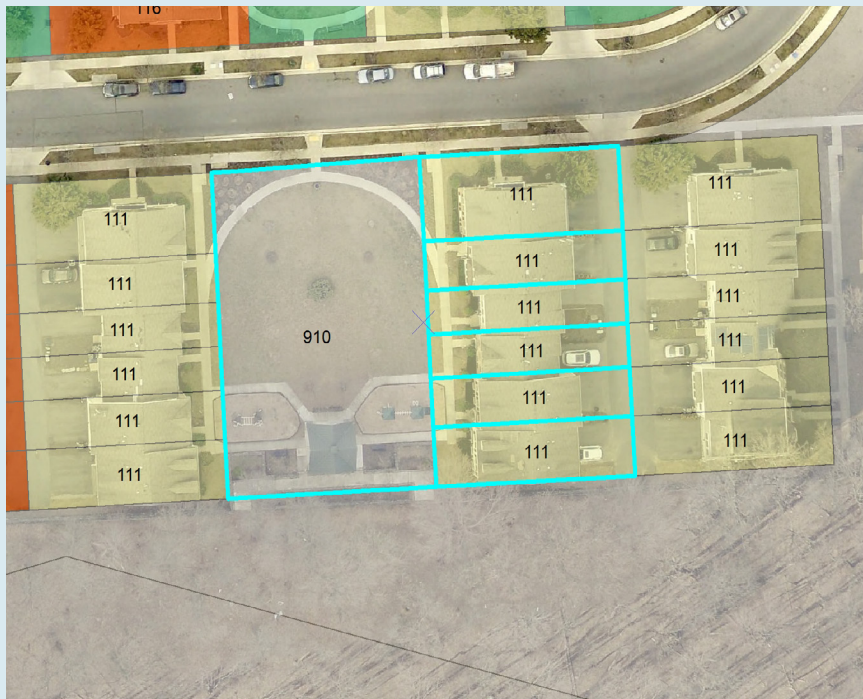


LANDUSE CODE CORRECTION

CLRKGVIC PART-I - SHEET P00033

SDAT_LU_CODE	LUCODE_QC	ACCT #	DISTRICT	PREMISE_ADD_NO	PREMISE_ADDR_ST	PREMISE STRTYPE	NOTES
111	116	03451256	02	12908	ETHEL ROSE	WAY	
111	116	03451267	02	12910	ETHEL ROSE	WAY	
111	116	03451212	02	12900	ETHEL ROSE	WAY	
111	116	03451223	02	12902	ETHEL ROSE	WAY	
111	116	03451234	02	12904	ETHEL ROSE	WAY	
111	116	03451245	02	12906	ETHEL ROSE	WAY	
910	740	03624932	02	0	ETHEL ROSE	WAY	HOA: POS

Current SDAT County Landuse Code



OCTOBER2019 SDAT EXTRACT

Proposed SDAT County Landuse Code



↑

LANDUSE CODE CORRECTION

CLRKGVIC PART-I - SHEET P00034

SDAT_LU_CODE	LUCODE_QC	ACCT #	DISTRICT	PREMISE_ADD_NO	PREMISE_ADDR_ST	PREMISE STRTYPE	NOTES
111	116	03451278	02	12912	ETHEL ROSE	WAY	
111	116	03451280	02	12914	ETHEL ROSE	WAY	
111	116	03451291	02	12916	ETHEL ROSE	WAY	
111	116	03451303	02	12918	ETHEL ROSE	WAY	
111	116	03451325	02	12922	ETHEL ROSE	WAY	
111	116	03451314	02	12920	ETHEL ROSE	WAY	

Current SDAT County Landuse Code



Proposed SDAT County Landuse Code



OCTOBER2019 SDAT EXTRACT

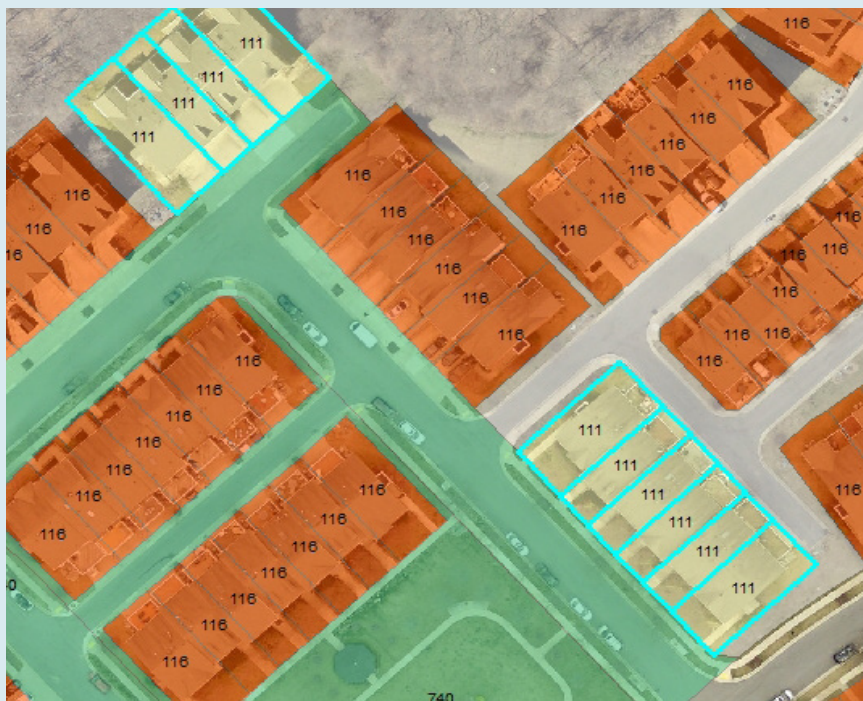
1

LANDUSE CODE CORRECTION

CLRKGVIC PART-I - SHEET P00035

SDAT_LU_CODE	LUCODE_QC	ACCT #	DISTRICT	PREMISE_ADD_NO	PREMISE_ADDR_ST	PREMISE STRTYPE	NOTES
111	116	03437995	02	22107	FAIR GARDEN	LN	
111	116	03438000	02	22105	FAIR GARDEN	LN	
111	116	03438011	02	22103	FAIR GARDEN	LN	
111	116	03438022	02	22101	FAIR GARDEN	LN	
111	116	03437871	02	22135	FAIR GARDEN	LN	
111	116	03437882	02	22133	FAIR GARDEN	LN	
111	116	03437893	02	22131	FAIR GARDEN	LN	
111	116	03437905	02	22129	FAIR GARDEN	LN	
111	116	03437973	02	22111	FAIR GARDEN	LN	
111	116	03437984	02	22109	FAIR GARDEN	LN	

Current SDAT County Landuse Code



Proposed SDAT County Landuse Code



OCTOBER2019 SDAT EXTRACT

740

740

LANDUSE CODE CORRECTION

CLRKGVIC PART-I - SHEET P00036

SDAT_LU_CODE	LUCODE_QC	ACCT #	DISTRICT	PREMISE_ADD_NO	PREMISE_ADDR_ST	PREMISE STRTYPE	NOTES
111	116	03438545	02	22100	HAVENWORTH	LN	
111	116	03438556	02	22102	HAVENWORTH	LN	
111	116	03438567	02	22104	HAVENWORTH	LN	
111	116	03438578	02	22106	HAVENWORTH	LN	
111	116	03438580	02	22108	HAVENWORTH	LN	
111	116	03438591	02	22110	HAVENWORTH	LN	
111	116	03438603	02	22112	HAVENWORTH	LN	

Current SDAT County Landuse Code

Proposed SDAT County Landuse Code



OCTOBER2019 SDAT EXTRACT

LANDUSE CODE CORRECTION

CLRKGVIC PART-I - SHEET **P00037**

SDAT_LU_CODE	LUCODE_QC	ACCT #	DISTRICT	PREMISE_ADD_NO	PREMISE_ADDR_ST	PREMISE STRTYPE	NOTES
116	116	03467707	02	22221	TRENTWORTH	WAY	
116	116	03467718	02	22223	TRENTWORTH	WAY	
116	116	03467720	02	22225	TRENTWORTH	WAY	
116	116	03467731	02	22227	TRENTWORTH	WAY	
111	116	03467742	02	22229	TRENTWORTH	WAY	
116	116	03467753	02	22231	TRENTWORTH	WAY	

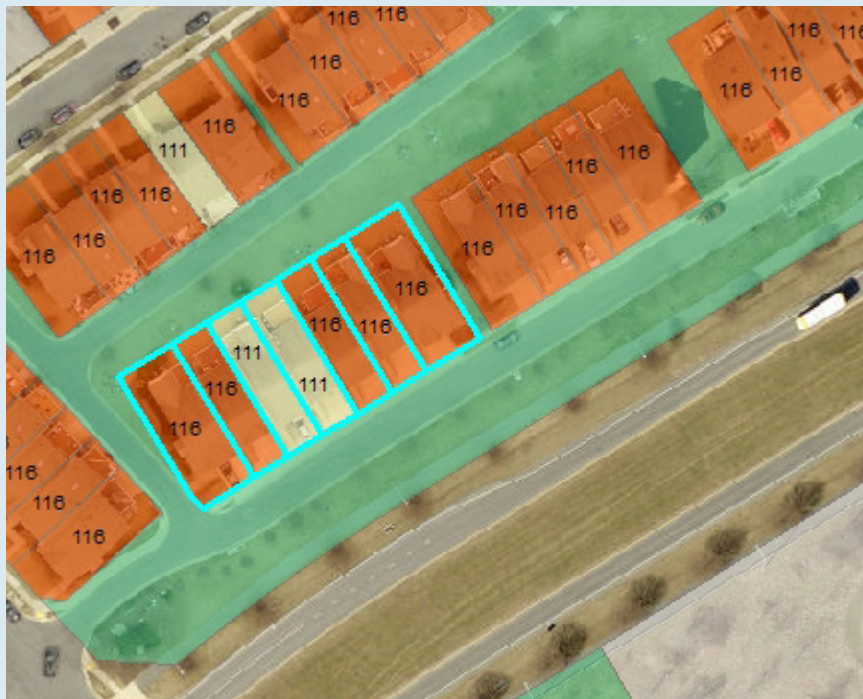


LANDUSE CODE CORRECTION

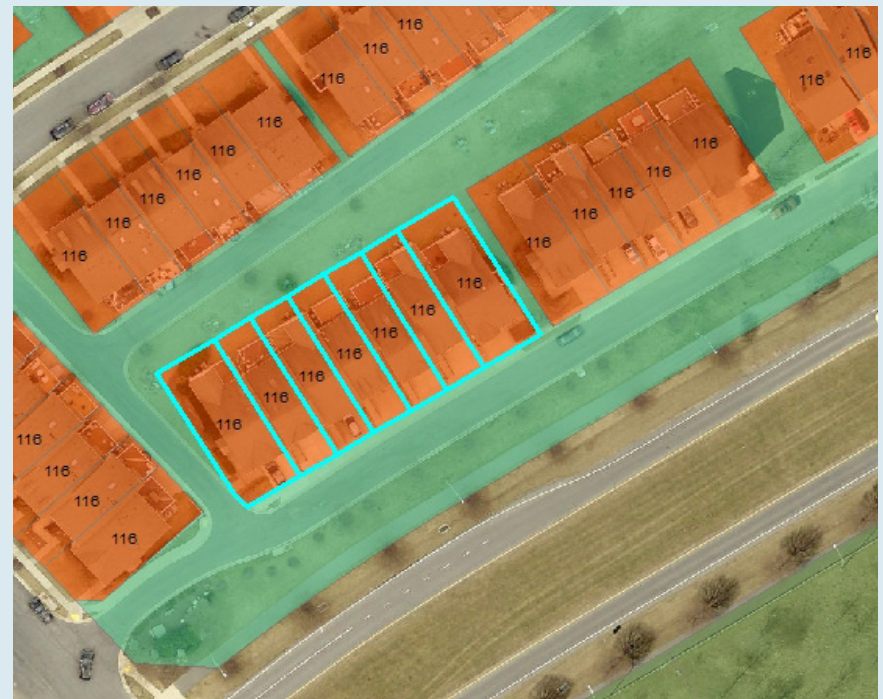
CLRKGVIC PART-I - SHEET P00038

SDAT_LU_CODE	LUCODE_QC	ACCT #	DISTRICT	PREMISE_ADD_NO	PREMISE_ADDR_ST	PREMISE STRTYPE	NOTES
116	116	03467811	02	12731	YORK MILL	LN	
116	116	03467833	02	12735	YORK MILL	LN	
111	116	03467844	02	12737	YORK MILL	LN	
111	116	03467855	02	12739	YORK MILL	LN	
116	116	03467866	02	12741	YORK MILL	LN	
116	116	03467877	02	12743	YORK MILL	LN	
116	116	03467822	02	12733	YORK MILL	LN	

Current SDAT County Landuse Code



Proposed SDAT County Landuse Code



OCTOBER2019 SDAT EXTRACT



LANDUSE CODE CORRECTION

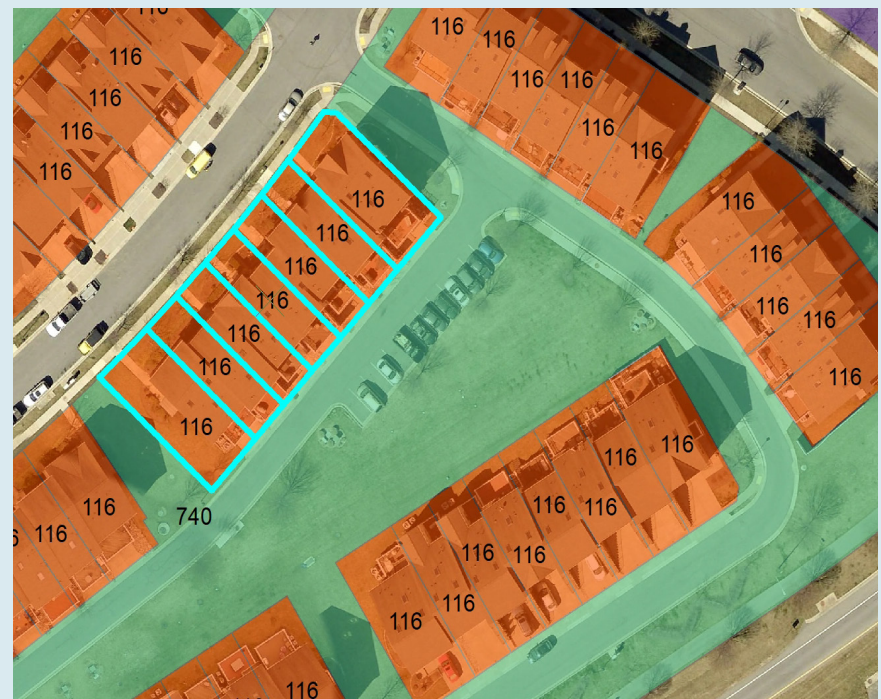
CLRKGVIC PART-I - SHEET P00039

SDAT_LU_CODE	LUCODE_QC	ACCT #	DISTRICT	PREMISE_ADD_NO	PREMISE_ADDR_ST	PREMISE STRTYPE	NOTES
111	116	03435872	02	22245	TRENTWORTH	WAY	
111	116	03435883	02	22247	TRENTWORTH	WAY	
111	116	03435894	02	22249	TRENTWORTH	WAY	
111	116	03435906	02	22251	TRENTWORTH	WAY	
111	116	03435917	02	22253	TRENTWORTH	WAY	
111	116	03435928	02	22255	TRENTWORTH	WAY	
111	116	03435930	02	22257	TRENTWORTH	WAY	

Current SDAT County Landuse Code



Proposed SDAT County Landuse Code



OCTOBER2019 SDAT EXTRACT



LANDUSE CODE CORRECTION

CLRKGVIC PART-I - SHEET P00040

SDAT_LU_CODE	LUCODE_QC	ACCT #	DISTRICT	PREMISE_ADD_NO	PREMISE_ADDR_ST	PREMISE STRTYPE	NOTES
111	116	03438215	02	22202	TRENTWORTH	WAY	
111	116	03438226	02	22200	TRENTWORTH	WAY	
111	116	03438170	02	22210	TRENTWORTH	WAY	
111	116	03438181	02	22208	TRENTWORTH	WAY	
111	116	03438192	02	22206	TRENTWORTH	WAY	
111	116	03438204	02	22204	TRENTWORTH	WAY	

Current SDAT County Landuse Code



Proposed SDAT County Landuse Code



OCTOBER2019 SDAT EXTRACT



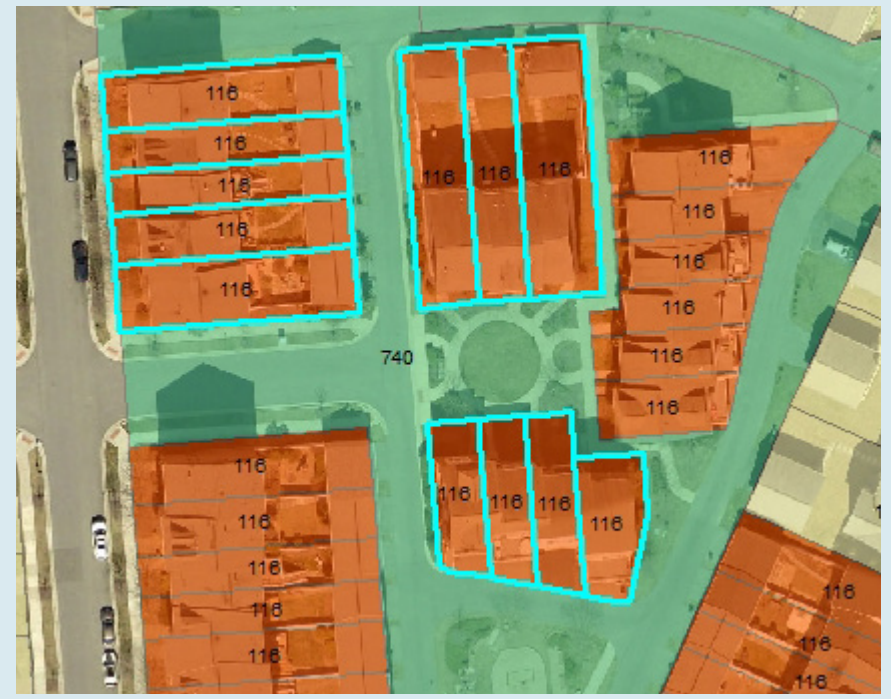
LANDUSE CODE CORRECTION

CLRKGVIC PART-I - SHEET P00041

SDAT_LU_CODE	LUCODE_QC	ACCT #	DISTRICT	PREMISE_ADD_NO	PREMISE_ADDR_ST	PREMISE STRTYPE	NOTES
111	116	03407544	02	12802	SHORT HILLS	DR	
111	116	03407555	02	12804	SHORT HILLS	DR	
111	116	03407566	02	12806	SHORT HILLS	DR	
116	116	03407486	02	23937	CATAWBA HILL	DR	
116	116	03407497	02	23939	CATAWBA HILL	DR	
116	116	03407500	02	23941	CATAWBA HILL	DR	
111	116	03407522	02	23945	CATAWBA HILL	DR	
111	116	03407533	02	12800	SHORT HILLS	DR	
111	116	03407577	02	12817	SHORT HILLS	DR	
111	116	03407588	02	12815	SHORT HILLS	DR	
111	116	03407590	02	12813	SHORT HILLS	DR	
116	116	03407511	02	23943	CATAWBA HILL	DR	

Current SDAT County Landuse Code

Proposed SDAT County Landuse Code



LANDUSE CODE CORRECTION

CLRKGVIC PART-I - SHEET P00042

SDAT_LU_CODE	LUCODE_QC	ACCT #	DISTRICT	PREMISE_ADD_NO	PREMISE_ADDR_ST	PREMISE STRTYPE	NOTES
111	116	03408047	02	12926	CLARKS CROSSING	DR	
111	116	03408003	02	12934	CLARKS CROSSING	DR	
111	116	03408014	02	12932	CLARKS CROSSING	DR	
111	116	03408025	02	12930	CLARKS CROSSING	DR	
111	116	03408036	02	12928	CLARKS CROSSING	DR	
111	116	03407657	02	12811	SHORT HILLS	DR	
111	116	03407602	02	12801	SHORT HILLS	DR	
111	116	03407613	02	12803	SHORT HILLS	DR	
111	116	03407624	02	12805	SHORT HILLS	DR	
111	116	03407635	02	12807	SHORT HILLS	DR	
111	116	03407646	02	12809	SHORT HILLS	DR	

Current SDAT County Landuse Code



Proposed SDAT County Landuse Code



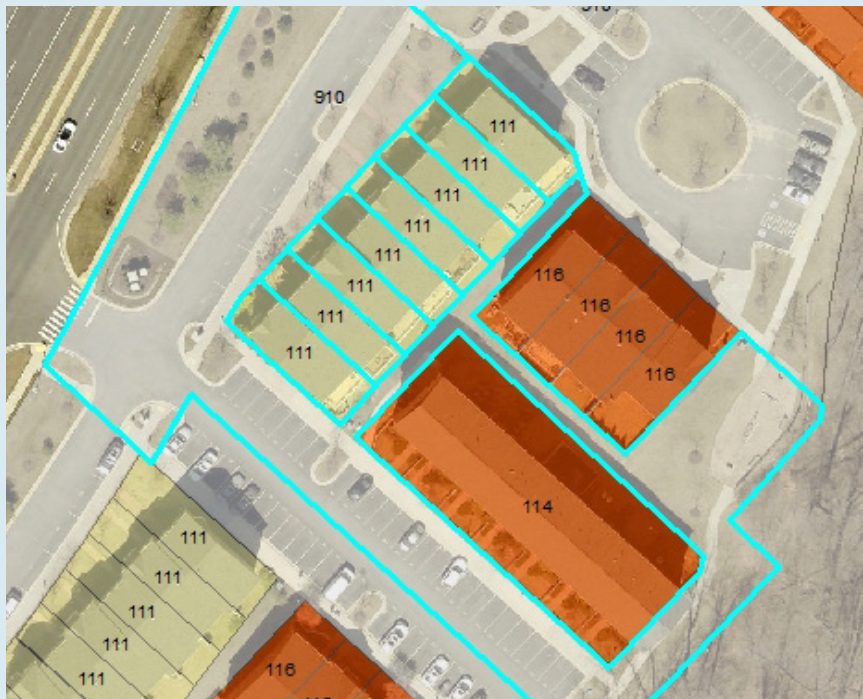
OCTOBER2019 SDAT EXTRACT

LANDUSE CODE CORRECTION

CLRKGVIC PART-I - SHEET P00043

SDAT_LU_CODE	LUCODE_QC	ACCT #	DISTRICT	PREMISE_ADD_NO	PREMISE_ADDR_ST	PREMISE STRTYPE	NOTES
910	740	03645364	02	0	FOREST HAVEN	WAY	HOA ALLEYS
111	116	03645386	02	23501	FOREST HAVEN	WAY	
111	116	03645397	02	23503	FOREST HAVEN	WAY	
111	116	03645400	02	23505	FOREST HAVEN	WAY	
111	116	03645411	02	23507	FOREST HAVEN	WAY	
111	116	03645422	02	23509	FOREST HAVEN	WAY	
111	116	03645433	02	23511	FOREST HAVEN	WAY	
111	116	03645444	02	23513	FOREST HAVEN	WAY	
111	116	03645455	02	23515	FOREST HAVEN	WAY	

Current SDAT County Landuse Code



Proposed SDAT County Landuse Code



OCTOBER2019 SDAT EXTRACT



LANDUSE CODE CORRECTION

CLRKGVIC PART-I - SHEET P00044

SDAT_LU_CODE	LUCODE_QC	ACCT #	DISTRICT	PREMISE_ADD_NO	PREMISE_ADDR_ST	PREMISE STRTYPE	NOTES
910	740	03645502	02	0	FOREST HAVEN	WAY	HOA: ALLEYS, PKG
111	116	03645694	02	23423	FOREST HAVEN	WAY	
111	116	03645706	02	23425	FOREST HAVEN	WAY	
111	116	03645717	02	23427	FOREST HAVEN	WAY	
111	116	03645728	02	23429	FOREST HAVEN	WAY	
111	116	03645730	02	23431	FOREST HAVEN	WAY	
111	116	03645661	02	23417	FOREST HAVEN	WAY	
111	116	03645672	02	23419	FOREST HAVEN	WAY	
111	116	03645683	02	23421	FOREST HAVEN	WAY	

Current SDAT County Landuse Code



OCTOBER2019 SDAT EXTRACT

Proposed SDAT County Landuse Code



LANDUSE CODE CORRECTION

CLRKGVIC PART-I - SHEET P00045

SDAT_LU_CODE	LUCODE_QC	ACCT #	DISTRICT	PREMISE_ADD_NO	PREMISE_ADDR_ST	PREMISE STRTYPE	NOTES
111	116	03645650	02	23415	FOREST HAVEN	WAY	
111	116	03645581	02	23401	FOREST HAVEN	WAY	
111	116	03645592	02	23403	FOREST HAVEN	WAY	
111	116	03645604	02	23405	FOREST HAVEN	WAY	
111	116	03645615	02	23407	FOREST HAVEN	WAY	
111	116	03645626	02	23409	FOREST HAVEN	WAY	
111	116	03645637	02	23411	FOREST HAVEN	WAY	
111	116	03645648	02	23413	FOREST HAVEN	WAY	

Current SDAT County Landuse Code



Proposed SDAT County Landuse Code



OCTOBER2019 SDAT EXTRACT



LANDUSE CODE CORRECTION

SDAT_LU_CODE	LUCODE_QC	ACCT #	DISTRICT	PREMISE_ADD_NO	PREMISE_ADDR_ST	PREMISE STRTYPE	NOTES
111	116	03645570	02	23412	FOREST HAVEN	WAY	
111	116	03645513	02	23400	FOREST HAVEN	WAY	
111	116	03645524	02	23402	FOREST HAVEN	WAY	
111	116	03645535	02	23404	FOREST HAVEN	WAY	
111	116	03645546	02	23406	FOREST HAVEN	WAY	
111	116	03645557	02	23408	FOREST HAVEN	WAY	
111	116	03645568	02	23410	FOREST HAVEN	WAY	

Current SDAT County Landuse Code



Proposed SDAT County Landuse Code



OCTOBER2019 SDAT EXTRACT

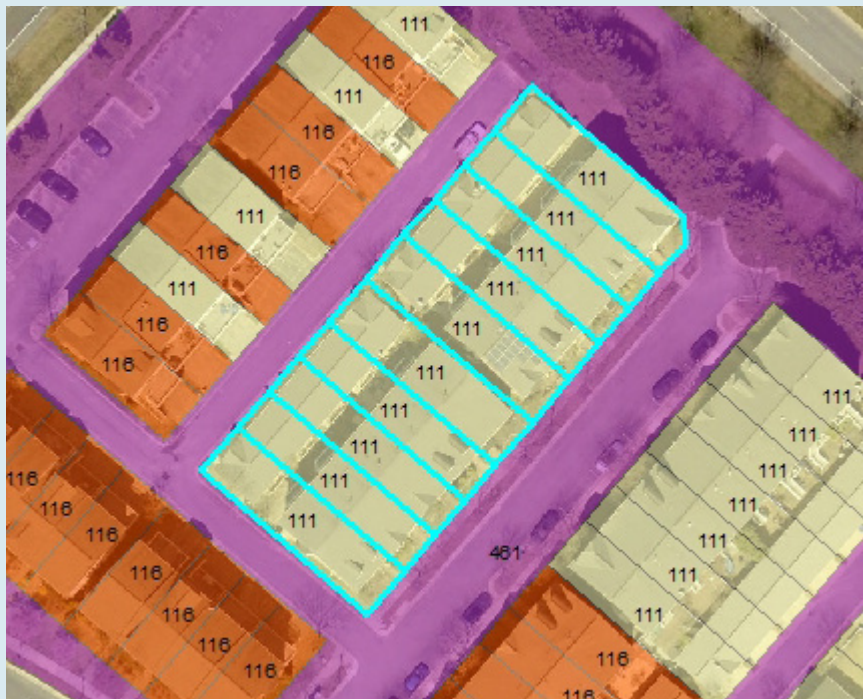


LANDUSE CODE CORRECTION

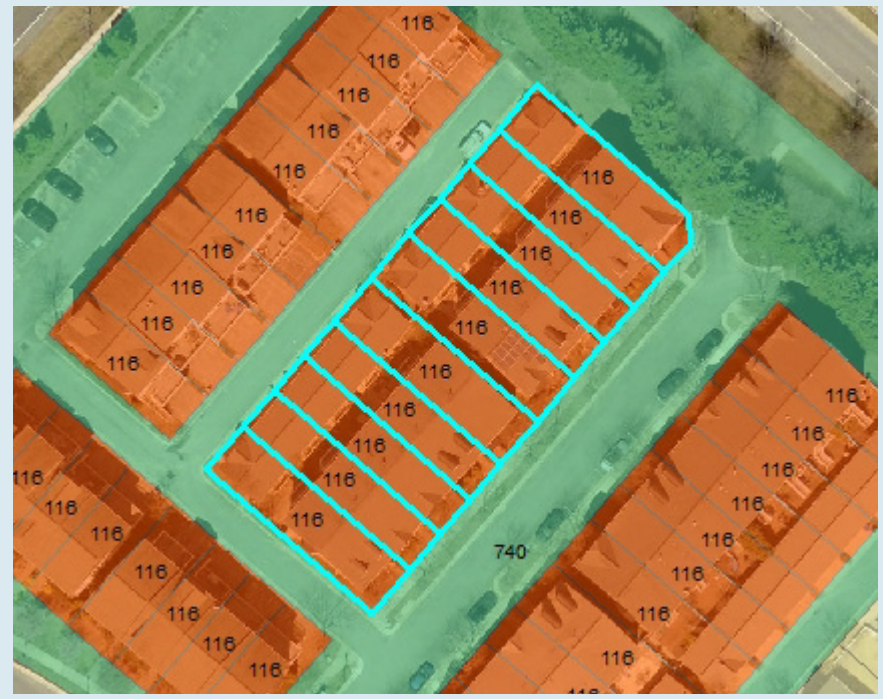
CLRKGVIC PART-I - SHEET **P00047**

SDAT_LU_CODE	LUCODE_QC	ACCT #	DISTRICT	PREMISE_ADD_NO	PREMISE_ADDR_ST	PREMISE STRTYPE	NOTES
111	116	03442684	02	23510	GARDENSIDE	PL	
111	116	03442695	02	23512	GARDENSIDE	PL	
111	116	03442707	02	23514	GARDENSIDE	PL	
111	116	03442775	02	23530	GARDENSIDE	PL	
111	116	03442718	02	23516	GARDENSIDE	PL	
111	116	03442720	02	23518	GARDENSIDE	PL	
111	116	03442731	02	23522	GARDENSIDE	PL	
111	116	03442742	02	23524	GARDENSIDE	PL	
111	116	03442753	02	23526	GARDENSIDE	PL	
111	116	03442764	02	23528	GARDENSIDE	PL	
461	740	03442491	02	0	DERBY POST	PL	HOA AISLES, PKG

Current SDAT County Landuse Code



Proposed SDAT County Landuse Code



OCTOBER2019 SDAT EXTRACT

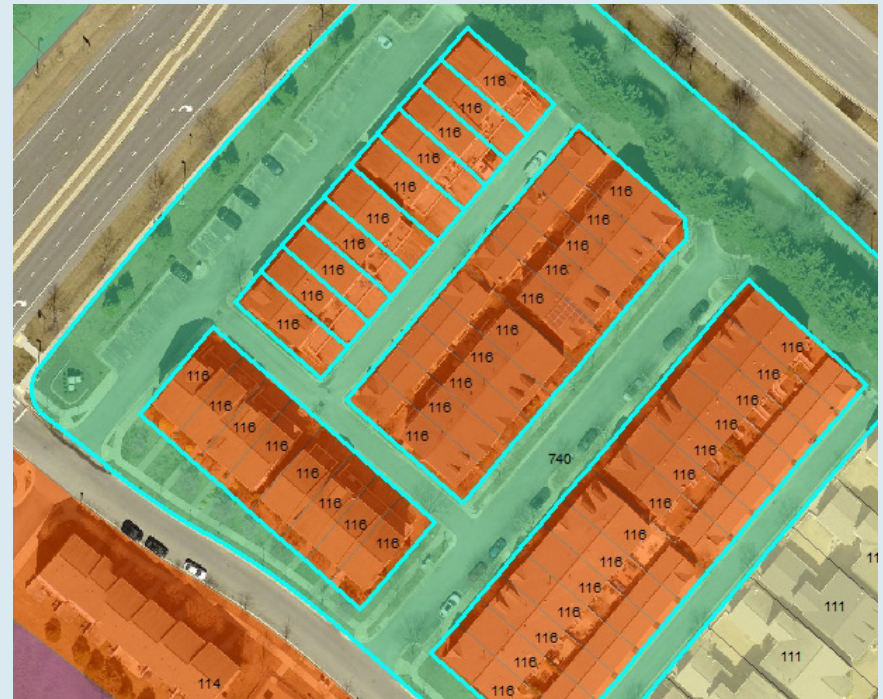
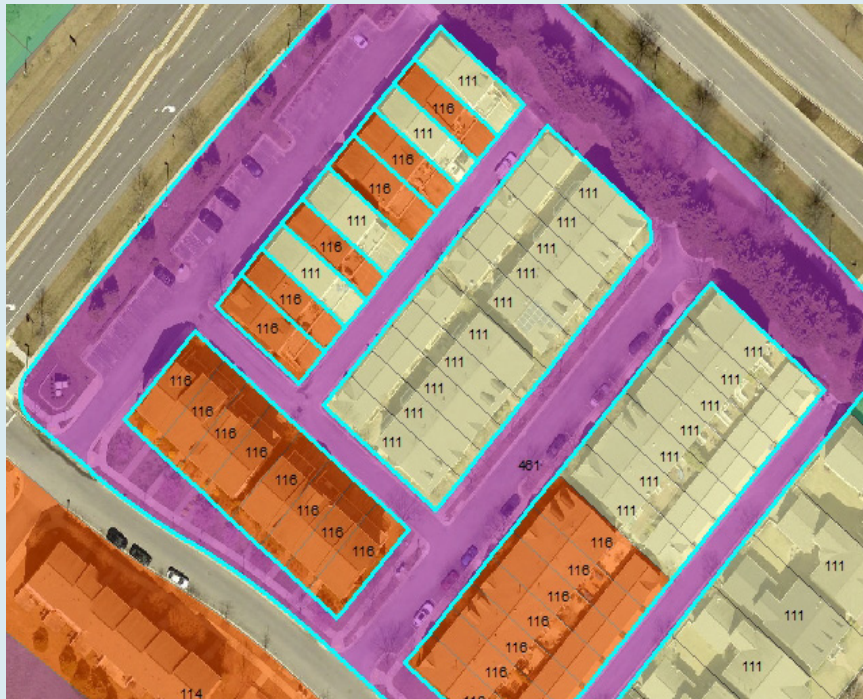
LANDUSE CODE CORRECTION

CLRKGVIC PART-I - SHEET **P00048**

SDAT_LU_CODE	LUCODE_QC	ACCT #	DISTRICT	PREMISE_ADD_NO	PREMISE_ADDR_ST	PREMISE STRTYPE	NOTES
461	740	03442491	02	0	DERBY POST	PL	HOA : ALLEYS, PKG
111	116	03442503	02	23521	DERBY POST	PL	
116	116	03442514	02	23519	DERBY POST	PL	
111	116	03442525	02	23517	DERBY POST	PL	
116	116	03442593	02	23501	DERBY POST	PL	
116	116	03442536	02	23515	DERBY POST	PL	
116	116	03442547	02	23513	DERBY POST	PL	
111	116	03442558	02	23509	DERBY POST	PL	
116	116	03442560	02	23507	DERBY POST	PL	
111	116	03442571	02	23505	DERBY POST	PL	
116	116	03442582	02	23503	DERBY POST	PL	

Current SDAT County Landuse Code

Proposed SDAT County Landuse Code



OCTOBER2019 SDAT EXTRACT

1

LANDUSE CODE CORRECTION

CLRKGVIC PART-I - SHEET **P00049**

SDAT_LU_CODE	LUCODE_QC	ACCT #	DISTRICT	PREMISE_ADD_NO	PREMISE_ADDR_ST	PREMISE STRTYPE	NOTES
111	116	03443245	02	12828	GRAND ELM	ST	
111	116	03443256	02	12826	GRAND ELM	ST	
111	116	03443267	02	12824	GRAND ELM	ST	
111	116	03443278	02	12822	GRAND ELM	ST	
111	116	03443280	02	12820	GRAND ELM	ST	
111	116	03443291	02	12818	GRAND ELM	ST	
111	116	03443303	02	12816	GRAND ELM	ST	

Current SDAT County Landuse Code

Proposed SDAT County Landuse Code

OCTOBER2019 SDAT EXTRACT



LANDUSE CODE CORRECTION

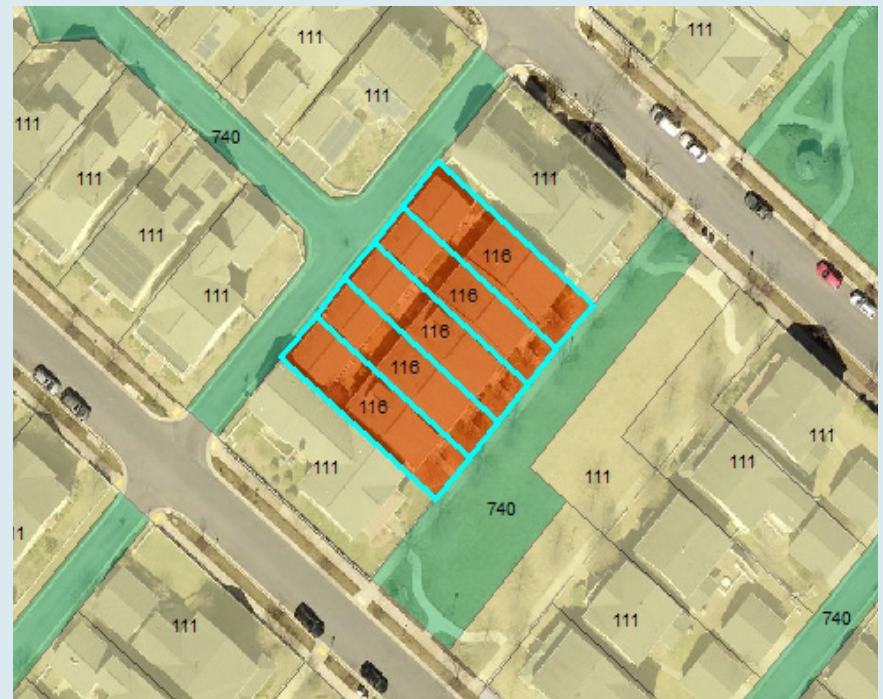
CLRKGVIC PART-I - SHEET P00050

SDAT_LU_CODE	LUCODE_QC	ACCT #	DISTRICT	PREMISE_ADD_NO	PREMISE_ADDR_ST	PREMISE STRTYPE	NOTES
111	116	03484518	02	23342	RAINBOW ARCH	DR	
111	116	03465880	02	23350	RAINBOW ARCH	DR	
111	116	03465891	02	23348	RAINBOW ARCH	DR	
111	116	03465903	02	23346	RAINBOW ARCH	DR	
111	116	03465914	02	23344	RAINBOW ARCH	DR	

Current SDAT County Landuse Code



Proposed SDAT County Landuse Code



OCTOBER2019 SDAT EXTRACT



LANDUSE CODE CORRECTION

CLRKGVIC PART-I - SHEET P00051

SDAT_LU_CODE	LUCODE_QC	ACCT #	DISTRICT	PREMISE_ADD_NO	PREMISE_ADDR_ST	PREMISE STRTYPE	NOTES
111	116	03391312	02	23616	PUBLIC HOUSE	RD	
111	116	03391323	02	23618	PUBLIC HOUSE	RD	
111	116	03391334	02	23620	PUBLIC HOUSE	RD	
111	116	03391345	02	23622	PUBLIC HOUSE	RD	
111	116	03391298	02	23612	PUBLIC HOUSE	RD	
111	116	03391301	02	23614	PUBLIC HOUSE	RD	
910	740	03777777	02	0	PUBLIC HOUSE	RD	HOA: POS, ALLEYS

Current SDAT County Landuse Code

Proposed SDAT County Landuse Code



OCTOBER2019 SDAT EXTRACT

LANDUSE CODE CORRECTION

CLRKGVIC PART-I - SHEET P00052

SDAT_LU_CODE	LUCODE_QC	ACCT #	DISTRICT	PREMISE_ADD_NO	PREMISE_ADDR_ST	PREMISE STRTYPE	NOTES
910	740	03635092	02	0	NEWCUT	RD	HOA POS
111	116	03682891	02	23000	SWEETSPIRE	DR	
111	116	03682903	02	23002	SWEETSPIRE	DR	
111	116	03682914	02	23004	SWEETSPIRE	DR	
111	116	03682925	02	23006	SWEETSPIRE	DR	
111	116	03682936	02	23008	SWEETSPIRE	DR	
910	740	03682708	02	0	SPICEBUSH	DR	HOA POS, DRIVES
910	740	03682710	02	0	SPICEBUSH	DR	HOA POS, DRIVES

Current SDAT County Landuse Code



Proposed SDAT County Landuse Code



OCTOBER 2019 SDAT EXTRACT

LANDUSE CODE CORRECTION

CLRKGVIC PART-I - SHEET P00053

SDAT_LU_CODE	LUCODE_QC	ACCT #	DISTRICT	PREMISE_ADD_NO	PREMISE_ADDR_ST	PREMISE STRTYPE	NOTES
910	740	03682880	02	0	SWEETSPIRE	DR	HOA POS
111	116	03682993	02	23040	SWEETSPIRE	DR	
111	116	03683007	02	23044	SWEETSPIRE	DR	
111	116	03683018	02	23046	SWEETSPIRE	DR	
111	116	03683020	02	23048	SWEETSPIRE	DR	
111	116	03683031	02	23050	SWEETSPIRE	DR	
111	116	03682947	02	23030	SWEETSPIRE	DR	
111	116	03682958	02	23032	SWEETSPIRE	DR	
111	116	03682960	02	23034	SWEETSPIRE	DR	
111	116	03682971	02	23036	SWEETSPIRE	DR	
111	116	03683042	02	23052	SWEETSPIRE	DR	
111	116	03682982	02	23038	SWEETSPIRE	DR	

Current SDAT County Landuse Code



Proposed SDAT County Landuse Code



OCTOBER2019 SDAT EXTRACT

LANDUSE CODE CORRECTION

CLRKGVIC PART-I - SHEET P00054

SDAT_LU_CODE	LUCODE_QC	ACCT #	DISTRICT	PREMISE_ADD_NO	PREMISE_ADDR_ST	PREMISE STRTYPE	NOTES
111	116	03682867	02	23053	SWEETSPIRE	DR	
910	740	03682878	02	0	SWEETSPIRE	DR	HOA PED CONX
910	740	03682721	02	0	SWEETSPIRE	DR	HOA PED CONX
111	116	03682823	02	23045	SWEETSPIRE	DR	
111	116	03682834	02	23047	SWEETSPIRE	DR	
111	116	03682845	02	23049	SWEETSPIRE	DR	
111	116	03682856	02	23051	SWEETSPIRE	DR	
910	740	03683111	02	0	MEADOW MIST	RD	HOA DRIVES

Current SDAT County Landuse Code



Proposed SDAT County Landuse Code



OCTOBER2019 SDAT EXTRACT



LANDUSE CODE CORRECTION

CLRKGVIC PART-I - SHEET P00055

SDAT_LU_CODE	LUCODE_QC	ACCT #	DISTRICT	PREMISE_ADD_NO	PREMISE_ADDR_ST	PREMISE STRTYPE	NOTES
116	116	03616338	02	23015	HEATH ASTER	WAY	
116	116	03616340	02	23013	HEATH ASTER	WAY	
116	116	03616351	02	23011	HEATH ASTER	WAY	
910	740	03616076	02	0	TULIP STEM	DR	
910	740	03616087	02	0	TULIP STEM	DR	
116	116	03616373	02	23007	HEATH ASTER	WAY	
111	116	03616384	02	23005	HEATH ASTER	WAY	
116	116	03616395	02	23003	HEATH ASTER	WAY	
116	116	03616407	02	23001	HEATH ASTER	WAY	
116	116	03616362	02	23009	HEATH ASTER	WAY	
116	116	03616316	02	23019	HEATH ASTER	WAY	
111	116	03616327	02	23017	HEATH ASTER	WAY	

Current SDAT County Landuse Code



Proposed SDAT County Landuse Code



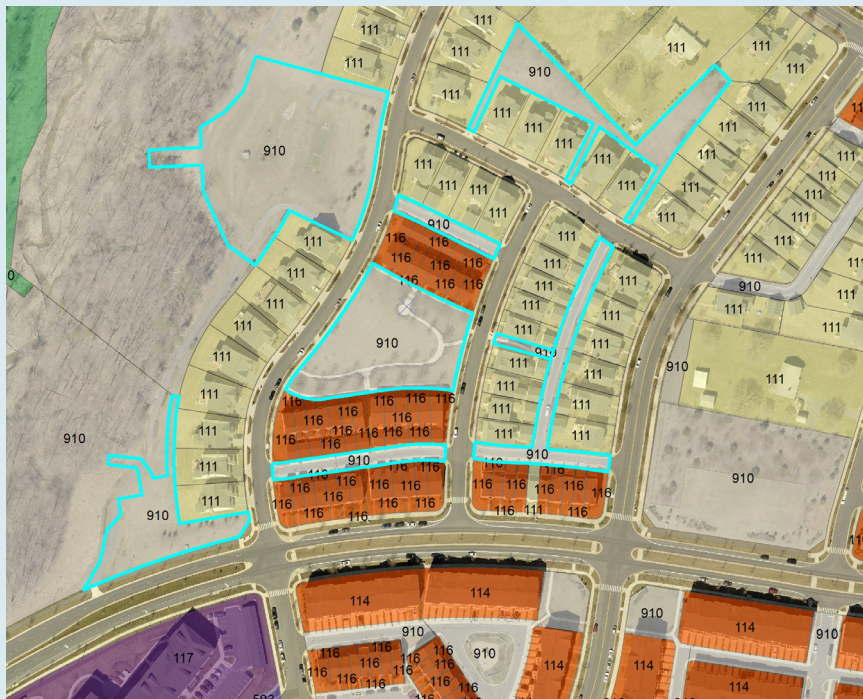
OCTOBER2019 SDAT EXTRACT

LANDUSE CODE CORRECTION

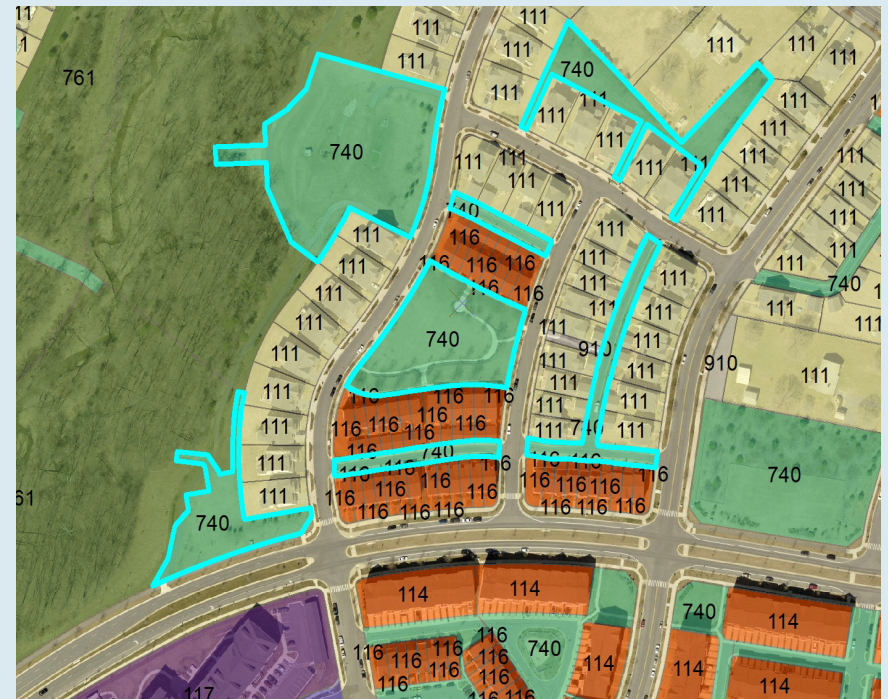
CLRKGVIC PART-I - SHEET P00056

SDAT_LU_CODE	LUCODE_QC	ACCT #	DISTRICT	PREMISE_ADD_NO	PREMISE_ADDR_ST	PREMISE STRTYPE	NOTES
910	740	03616704	02	0	SPICEBUSH	DR	HOA POS (MAJ)
910	740	03599574	02	0	WILD HYACINTH	WAY	HOA PED CONX
910	740	03599585	02	0	WILD HYACINTH	WAY	HOA ALLEY
910	740	03599290	02	0	ARORA HILLS	DR	HOA POS (MAJ)
910	740	03599302	02	0	ARORA HILLS	DR	HOA PED CONX
910	740	03599313	02	0	ARORA HILLS	DR	HOA ALLEY
910	740	03599095	02	0	CLIFFROSE	DR	HOA ALLEY
910	740	03599791	02	0	NEWCUT	RD	HOA ALLEY
910	740	03639181	02	0	ARORA HILLS	RD	HOA POS, SWM
910	740	03617413	02	0	LITTLE SENECA	PKY	HOA POS, SWM

Current SDAT County Landuse Code



Proposed SDAT County Landuse Code



OCTOBER2019 SDAT EXTRACT

LANDUSE CODE CORRECTION

CLRKGVIC PART-I - SHEET P00057

SDAT_LU_CODE	LUCODE_QC	ACCT #	DISTRICT	PREMISE_ADD_NO	PREMISE_ADDR_ST	PREMISE STRTYPE	NOTES
111	111	03616737	02	11832	STEEPLEBUSH	DR	
111	111	03616748	02	11830	STEEPLEBUSH	DR	
116	111	03616750	02	11828	STEEPLEBUSH	DR	
111	111	03616761	02	11826	STEEPLEBUSH	DR	
111	111	03616772	02	11824	STEEPLEBUSH	DR	
111	111	03616783	02	11822	STEEPLEBUSH	DR	
111	111	03616794	02	11820	STEEPLEBUSH	DR	

Current SDAT County Landuse Code



Proposed SDAT County Landuse Code



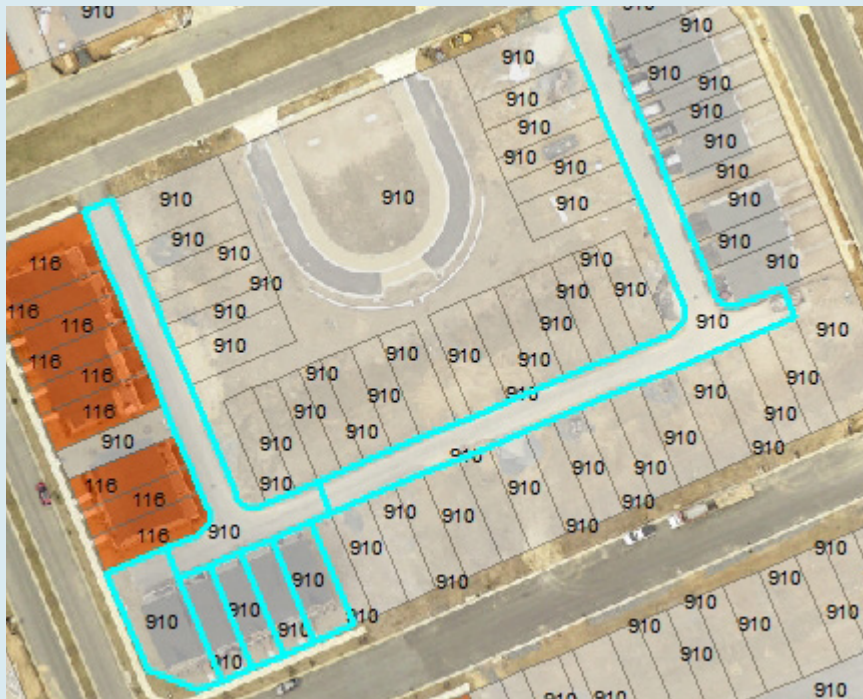
OCTOBER2019 SDAT EXTRACT

LANDUSE CODE CORRECTION

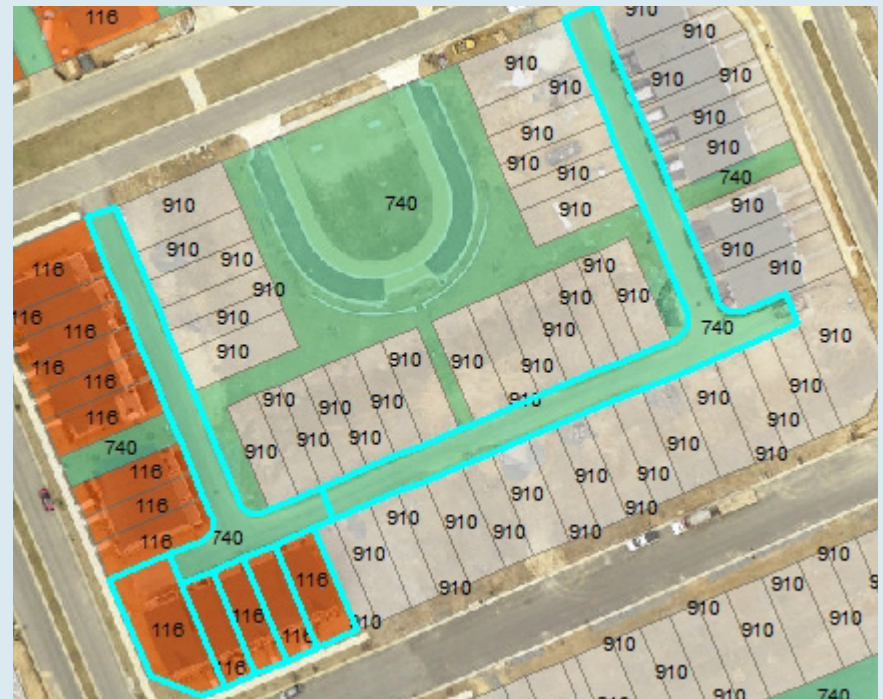
CLRKGVIC PART-I - SHEET P00058

SDAT_LU_CODE	LUCODE_QC	ACCT #	DISTRICT	PREMISE_ADD_NO	PREMISE_ADDR_ST	PREMISE STRTYPE	NOTES
910	740	03770993	02	0	SKIMMER	ST	HOA ALLEY
910	116	03771020	02	13651	HARRIER	WAY	
910	116	03771031	02	13653	HARRIER	WAY	
910	116	03771042	02	13655	HARRIER	WAY	
910	116	03771053	02	13657	HARRIER	WAY	
910	116	03771064	02	13659	HARRIER	WAY	
910	740	03789401	02	0	CABIN BRANCH	AVE	HOA ALLEY

Current SDAT County Landuse Code



Proposed SDAT County Landuse Code

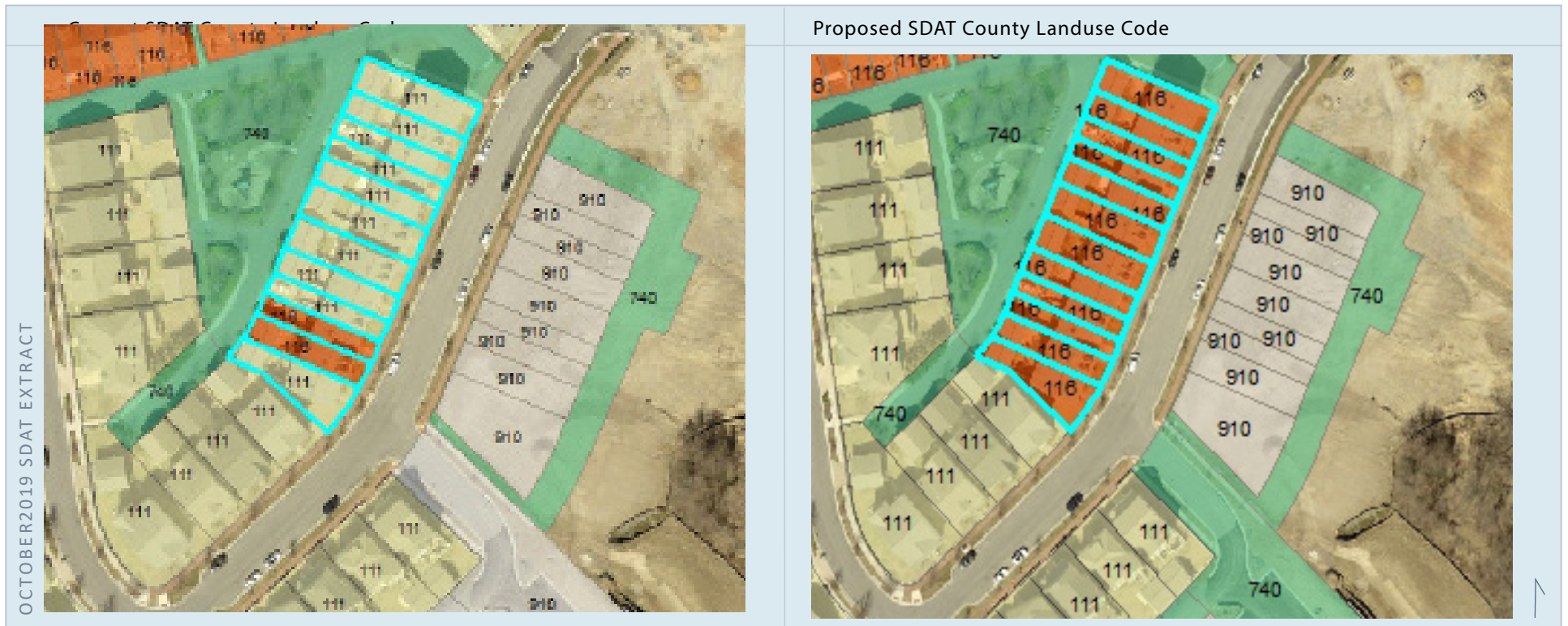


OCTOBER2019 SDAT EXTRACT

LANDUSE CODE CORRECTION

CLRKGVIC PART-I - SHEET P00059

SDAT_LU_CODE	LUCODE_QC	ACCT #	DISTRICT	PREMISE_ADD_NO	PREMISE_ADDR_ST	PREMISE STRTYPE	NOTES
111	116	03390716	02	13117	CLARKSBURG SQUARE	RD	
111	116	03390727	02	13115	CLARKSBURG SQUARE	RD	
111	116	03390738	02	13113	CLARKSBURG SQUARE	RD	
111	116	03390740	02	13111	CLARKSBURG SQUARE	RD	
111	116	03390751	02	13109	CLARKSBURG SQUARE	RD	
111	116	03390762	02	13107	CLARKSBURG SQUARE	RD	
111	116	03390682	02	13123	CLARKSBURG SQUARE	RD	
116	03390693	03390693	02	13121	CLARKSBURG SQUARE	RD	
116	03390705	03390705	02	13119	CLARKSBURG SQUARE	RD	
111	116	03390773	02	13105	CLARKSBURG SQUARE	RD	
111	116	03390784	02	13103	CLARKSBURG SQUARE	RD	
111	116	03390795	02	13101	CLARKSBURG SQUARE	RD	



OCTOBER 2019 SDAT EXTRACT

Proposed SDAT County Landuse Code

LANDUSE CODE CORRECTION

SDAT_LU_CODE	LUCODE_QC	ACCT #	DISTRICT	PREMISE_ADD_NO	PREMISE_ADDR_ST	PREMISE STRTYPE	NOTES
111	116	03425007	02	23138	BASSWOOD HILL	DR	
111	116	03425018	02	23136	BASSWOOD HILL	DR	
111	116	03425020	02	23134	BASSWOOD HILL	DR	
111	116	03425031	02	23132	BASSWOOD HILL	DR	
111	116	03425042	02	23130	BASSWOOD HILL	DR	
111	116	03424960	02	23146	BASSWOOD HILL	DR	
111	116	03424971	02	23144	BASSWOOD HILL	DR	
111	116	03424982	02	23142	BASSWOOD HILL	DR	
111	116	03424993	02	23140	BASSWOOD HILL	DR	



LANDUSE CODE CORRECTION

SDAT_LU_CODE	LUCODE_QC	ACCT #	DISTRICT	PREMISE_ADD_NO	PREMISE_ADDR_ST	PREMISE STRTYPE	NOTES
111	116	03425075	02	23124	BASSWOOD HILL	DR	
111	116	03425086	02	23122	BASSWOOD HILL	DR	
111	116	03425097	02	23120	BASSWOOD HILL	DR	
111	116	03425100	02	23118	BASSWOOD HILL	DR	
111	116	03425111	02	23116	BASSWOOD HILL	DR	
111	116	03425053	02	23128	BASSWOOD HILL	DR	
111	116	03425064	02	23126	BASSWOOD HILL	DR	

Current SDAT County Landuse Code



OCTOBER2019 SDAT EXTRACT

Proposed SDAT County Landuse Code



LANDUSE CODE CORRECTION

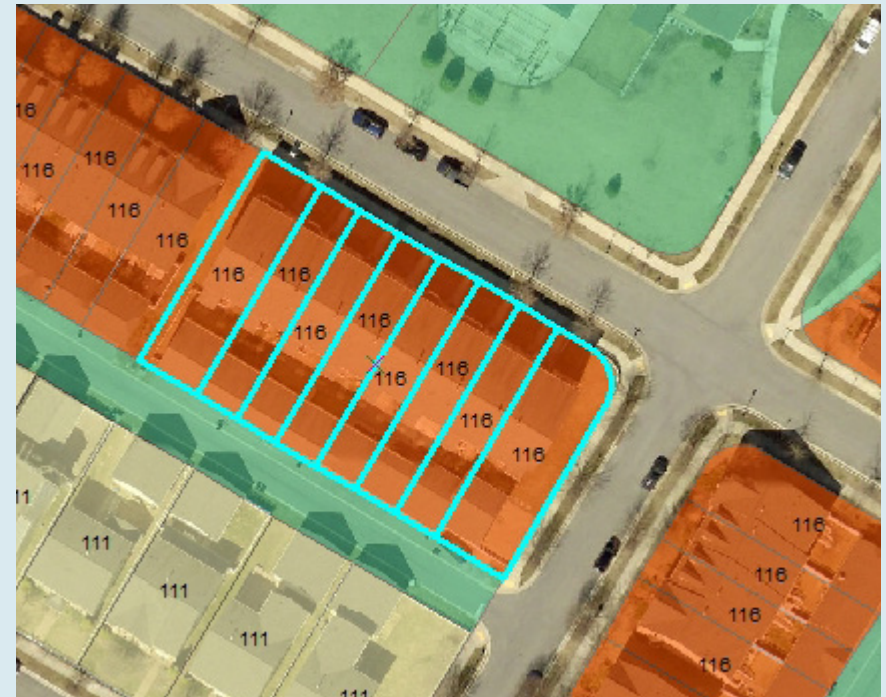
CLRKGVIC PART-I - SHEET P00062

SDAT_LU_CODE	LUCODE_QC	ACCT #	DISTRICT	PREMISE_ADD_NO	PREMISE_ADDR_ST	PREMISE STRTYPE	NOTES
111	116	03425122	02	23114	BASSWOOD HILL	DR	
111	116	03425190	02	23100	BASSWOOD HILL	DR	
111	116	03425133	02	23112	BASSWOOD HILL	DR	
111	116	03425144	02	23110	BASSWOOD HILL	DR	
111	116	03425155	02	23108	BASSWOOD HILL	DR	
111	116	03425166	02	23106	BASSWOOD HILL	DR	
111	116	03425177	02	23104	BASSWOOD HILL	DR	
111	116	03425188	02	23102	BASSWOOD HILL	DR	

Current SDAT County Landuse Code



Proposed SDAT County Landuse Code



OCTOBER2019 SDAT EXTRACT



LANDUSE CODE CORRECTION

SDAT_LU_CODE	LUCODE_QC	ACCT #	DISTRICT	PREMISE_ADD_NO	PREMISE_ADDR_ST	PREMISE STRTYPE	NOTES
111	116	03425348	02	12056	CHESTNUT GLEN	RD	
111	116	03425372	02	12050	CHESTNUT GLEN	RD	
111	116	03425383	02	12048	CHESTNUT GLEN	RD	
111	116	03425394	02	12046	CHESTNUT GLEN	RD	
111	116	03425406	02	12044	CHESTNUT GLEN	RD	
111	116	03425417	02	12042	CHESTNUT GLEN	RD	
111	116	03425350	02	12054	CHESTNUT GLEN	RD	
111	116	03425361	02	12052	CHESTNUT GLEN	RD	

Current SDAT County Landuse Code



Proposed SDAT County Landuse Code



OCTOBER2019 SDAT EXTRACT

LANDUSE CODE CORRECTION

CLRKGVIC PART-I - SHEET P00064

SDAT_LU_CODE	LUCODE_QC	ACCT #	DISTRICT	PREMISE_ADD_NO	PREMISE_ADDR_ST	PREMISE STRTYPE	NOTES
111	116	03390410	02	23613	PUBLIC HOUSE	RD	
111	116	03390421	02	23611	PUBLIC HOUSE	RD	
111	116	03390432	02	23609	PUBLIC HOUSE	RD	
111	116	03390443	02	23607	PUBLIC HOUSE	RD	
111	116	03390454	02	23605	PUBLIC HOUSE	RD	
111	116	03390465	02	23603	PUBLIC HOUSE	RD	
111	116	03390476	02	23601	PUBLIC HOUSE	RD	
111	116	03390408	02	23615	PUBLIC HOUSE	RD	
111	116	03390396	02	23617	PUBLIC HOUSE	RD	

Current SDAT County Landuse Code



OCTOBER2019 SDAT EXTRACT

Proposed SDAT County Landuse Code



LANDUSE CODE CORRECTION

CLRKGVIC PART-I - SHEET P00065

SDAT_LU_CODE	LUCODE_QC	ACCT #	DISTRICT	PREMISE_ADD_NO	PREMISE_ADDR_ST	PREMISE STRTYPE	NOTES
111	116	03390341	02	23616	GENERAL STORE	DR	
111	116	03390352	02	23618	GENERAL STORE	DR	
111	116	03390363	02	23620	GENERAL STORE	DR	
111	116	03390374	02	23622	GENERAL STORE	DR	
111	116	03390385	02	23624	GENERAL STORE	DR	

Current SDAT County Landuse Code



Proposed SDAT County Landuse Code



OCTOBER2019 SDAT EXTRACT

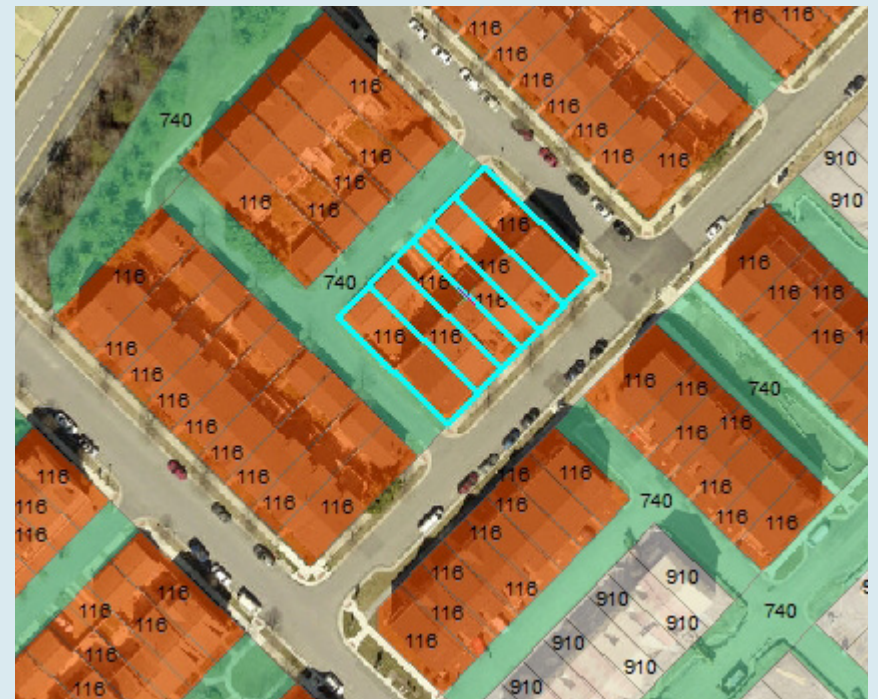
LANDUSE CODE CORRECTION

CLRKGVIC PART-I - SHEET P00066

SDAT_LU_CODE	LUCODE_QC	ACCT #	DISTRICT	PREMISE_ADD_NO	PREMISE_ADDR_ST	PREMISE STRTYPE	NOTES
111	116	03390487	02	13023	EBENEZER CHAPEL	DR	
111	116	03390498	02	13021	EBENEZER CHAPEL	DR	
111	116	03390501	02	13019	EBENEZER CHAPEL	DR	
111	116	03390512	02	13017	EBENEZER CHAPEL	DR	
111	116	03390523	02	13015	EBENEZER CHAPEL	DR	
111	116	03390534	02	13013	EBENEZER CHAPEL	DR	

Current SDAT County Landuse Code

Proposed SDAT County Landuse Code



OCTOBER2019 SDAT EXTRACT

LANDUSE CODE CORRECTION

SDAT_LU_CODE	LUCODE_QC	ACCT #	DISTRICT	PREMISE_ADD_NO	PREMISE_ADDR_ST	PREMISE STRTYPE	NOTES
111	116	03391312	02	23616	PUBLIC HOUSE	RD	
111	116	03391323	02	23618	PUBLIC HOUSE	RD	
111	116	03391334	02	23620	PUBLIC HOUSE	RD	
111	116	03391345	02	23622	PUBLIC HOUSE	RD	
111	116	03391298	02	23612	PUBLIC HOUSE	RD	
111	116	03391301	02	23614	PUBLIC HOUSE	RD	

Current SDAT County Landuse Code



Proposed SDAT County Landuse Code



OCTOBER2019 SDAT EXTRACT

LANDUSE CODE CORRECTION

CLRKGVIC PART-I - SHEET P00068

SDAT_LU_CODE	LUCODE_QC	ACCT #	DISTRICT	PREMISE_ADD_NO	PREMISE_ADDR_ST	PREMISE STRTYPE	NOTES
111	116	03391378	02	23604	PUBLIC HOUSE	RD	
111	116	03391380	02	23606	PUBLIC HOUSE	RD	
111	116	03391391	02	23608	PUBLIC HOUSE	RD	
111	116	03391403	02	23610	PUBLIC HOUSE	RD	
111	116	03391356	02	23600	PUBLIC HOUSE	RD	
111	116	03391367	02	23602	PUBLIC HOUSE	RD	
910	740	03777788	02	0	PUBLIC HOUSE	RD	PED CONX, HOA

Current SDAT County Landuse Code



Proposed SDAT County Landuse Code



OCTOBER2019 SDAT EXTRACT

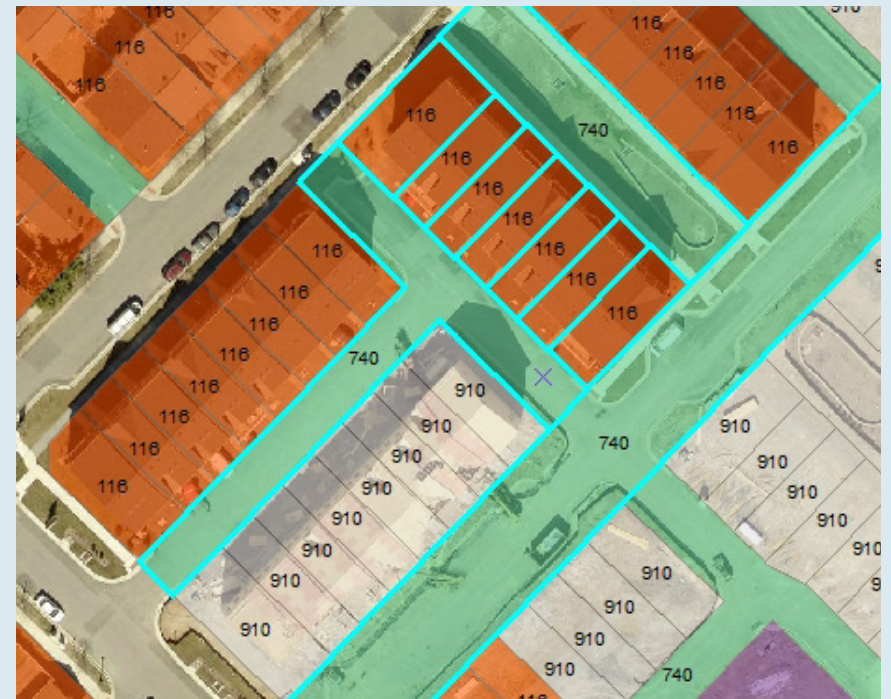
LANDUSE CODE CORRECTION

CLRKGVIC PART-I - SHEET P00069

SDAT_LU_CODE	LUCODE_QC	ACCT #	DISTRICT	PREMISE_ADD_NO	PREMISE_ADDR_ST	PREMISE STRTYPE	NOTES
910	740	03807192	02	0	EBENEZER CHAPEL	DR	HOA POS (MEWS)
910	740	03807204	02	0	EBENEZER CHAPEL	DR	HOA PRIVATE STR
910	740	03807215	02	0	MARTZ	ST	HOA PRIVATE STR
116	116	03807625	02	13063	MARTZ	ST	
910	116	03807636	02	13061	MARTZ	ST	
116	116	03807647	02	13059	MARTZ	ST	
116	116	03807658	02	13057	MARTZ	ST	
116	116	03807660	02	13055	MARTZ	ST	
116	116	03807671	02	13053	MARTZ	ST	

Current SDAT County Landuse Code

Proposed SDAT County Landuse Code



OCTOBER2019 SDAT EXTRACT

LANDUSE CODE CORRECTION

CLRKGVIC PART-I - SHEET P00070

SDAT_LU_CODE	LUCODE_QC	ACCT #	DISTRICT	PREMISE_ADD_NO	PREMISE_ADDR_ST	PREMISE STRTYPE	NOTES
910	740	03807181	02	0	EBENEZER CHAPEL	DR	HOA PRIV STR
910	116	03808050	02	13005	MARTZ	ST	
910	116	03808061	02	13003	MARTZ	ST	
910	116	03808072	02	13001	MARTZ	ST	
910	116	03808015	02	13013	MARTZ	ST	
910	116	03808026	02	13011	MARTZ	ST	
910	116	03808037	02	13009	MARTZ	ST	
910	116	03808048	02	13007	MARTZ	ST	
910	910	03808004	02	13017	MARTZ	ST	RESD LOT VACANT
910	740	03807773	02	0	OVERLOOK PARK	DR	HOA PRIV STR
910	740	03807784	02	0	MARTZ	ST	HOA PRIV STR
910	910	03795264	02	0	OVERLOOK PARK	DR	UNDEDICATED

Current SDAT County Landuse Code



Proposed SDAT County Landuse Code



OCTOBER2019 SDAT EXTRACT



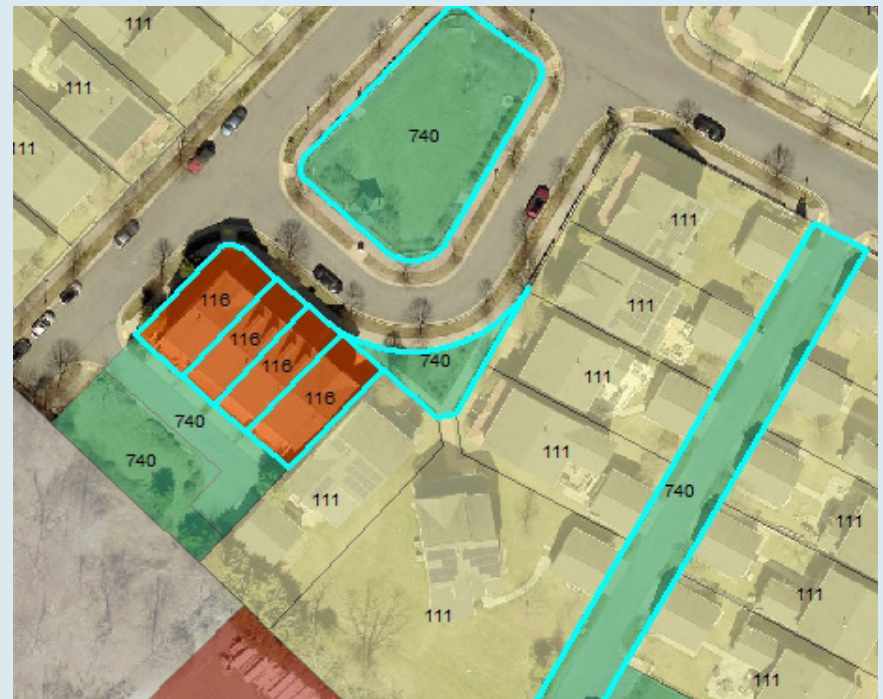
LANDUSE CODE CORRECTION

SDAT_LU_CODE	LUCODE_QC	ACCT #	DISTRICT	PREMISE_ADD_NO	PREMISE_ADDR_ST	PREMISE STRTYPE	NOTES
910	740	03404404	02	0	WEBSTER HILL	CT	HOA POS
111	116	03404483	02	7	WEBSTER HILL	CT	
111	116	03404494	02	5	WEBSTER HILL	CT	
111	116	03404506	02	3	WEBSTER HILL	CT	
111	116	03404517	02	1	WEBSTER HILL	CT	
910	740	03404370	02	0	TANNERY RIDGE	DR	HOA ALLEY
910	740	03404610	02	0	TANNERY RIDGE	DR	HOA POS

Current SDAT County Landuse Code



Proposed SDAT County Landuse Code



OCTOBER2019 SDAT EXTRACT



LANDUSE CODE CORRECTION

CLRKGVIC PART-I - SHEET P00072

SDAT_LU_CODE	LUCODE_QC	ACCT #	DISTRICT	PREMISE_ADD_NO	PREMISE_ADDR_ST	PREMISE STRTYPE	NOTES
111	116	03390807	02	23500	PUBLIC HOUSE	RD	
111	116	03390818	02	23502	PUBLIC HOUSE	RD	
111	116	03390820	02	23504	PUBLIC HOUSE	RD	
111	116	03390831	02	23506	PUBLIC HOUSE	RD	

Current SDAT County Landuse Code

Proposed SDAT County Landuse Code



OCTOBER2019 SDAT EXTRACT



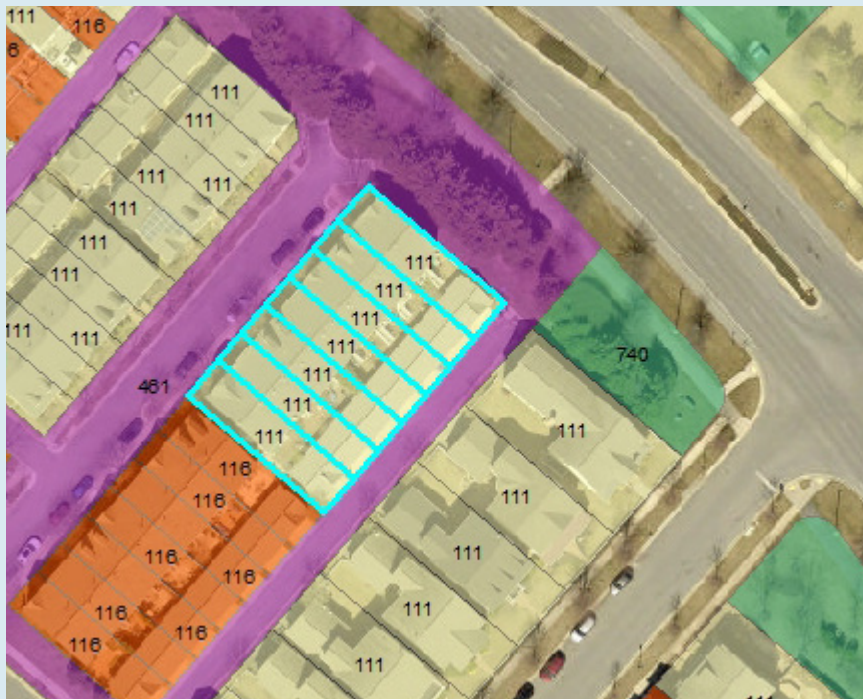
LANDUSE CODE CORRECTION

CLRKGVIC PART-I - SHEET P00073

SDAT_LU_CODE	LUCODE_QC	ACCT #	DISTRICT	PREMISE_ADD_NO	PREMISE_ADDR_ST	PREMISE STRTYPE	NOTES
111	116	03442786	02	23529	GARDENSIDE	PL	
111	116	03442797	02	23527	GARDENSIDE	PL	
111	116	03442800	02	23525	GARDENSIDE	PL	
111	116	03442811	02	23523	GARDENSIDE	PL	
111	116	03442822	02	23521	GARDENSIDE	PL	
111	116	03442833	02	23519	GARDENSIDE	PL	
111	116	03442844	02	23517	GARDENSIDE	PL	

Current SDAT County Landuse Code

Proposed SDAT County Landuse Code



OCTOBER2019 SDAT EXTRACT

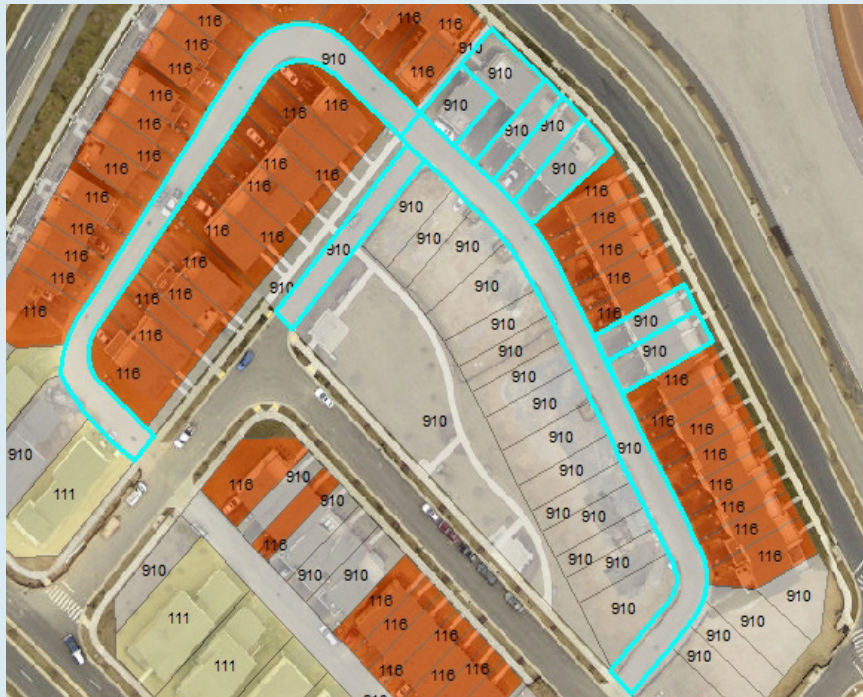


LANDUSE CODE CORRECTION

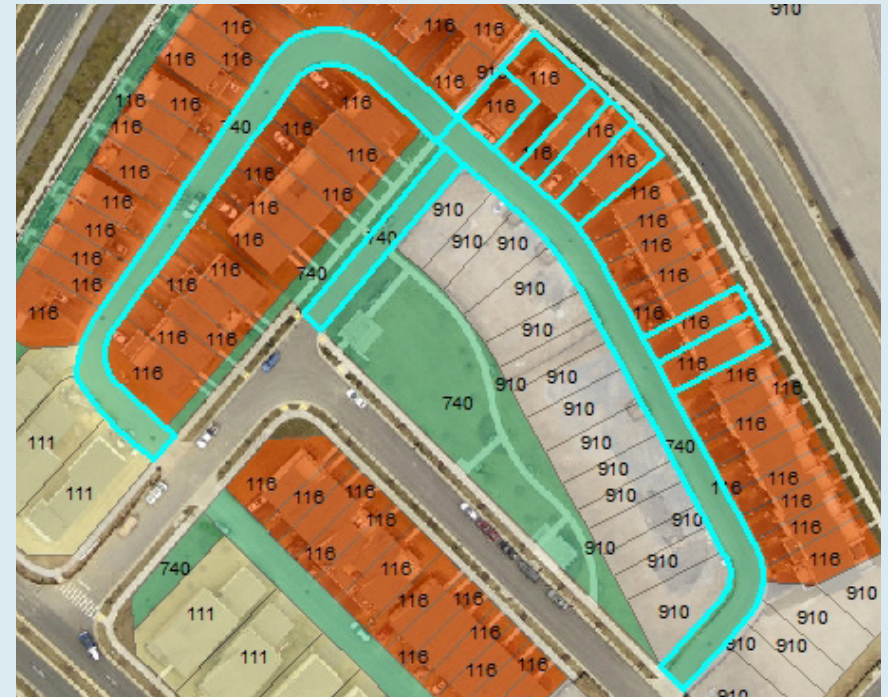
CLRKGVIC PART-I - SHEET P00074

SDAT_LU_CODE	LUCODE_QC	ACCT #	DISTRICT	PREMISE_ADD_NO	PREMISE_ADDR_ST	PREMISE STRTYPE	NOTES
910	740	03746801	02	0	COHOSH	ALLEY	HOA ALLEY
910	116	03746093	02	22844	CABIN BRANCH	AVE	
910	116	03746105	02	22842	CABIN BRANCH	AVE	
910	116	03746116	02	22840	CABIN BRANCH	AVE	
910	116	03746127	02	22838	CABIN BRANCH	AVE	
910	116	03746138	02	22836	CABIN BRANCH	AVE	
910	740	03746801	02	0	COHOSH	ALLEY	HOA ALLEY
910	740	03746812	02	0	COHOSH	ALLEY	HOA ALLEY
910	116	03816072	02	22822	CABIN BRANCH	AVE	
910	116	03816083	02	22820	CABIN BRANCH	AVE	

Current SDAT County Landuse Code



Proposed SDAT County Landuse Code



OCTOBER2019 SDAT EXTRACT

LANDUSE CODE CORRECTION

SDAT_LU_CODE	LUCODE_QC	ACCT #	DISTRICT	PREMISE_ADD_NO	PREMISE_ADDR_ST	PREMISE STRTYPE	NOTES
910	116	03768740	02	22654	OBSERVATION	DR	
910	116	03768762	02	22650	OBSERVATION	DR	
910	116	03768773	02	22648	OBSERVATION	DR	
910	116	03768784	02	22646	OBSERVATION	DR	
910	116	03768795	02	22644	OBSERVATION	DR	
910	116	03768807	02	22642	OBSERVATION	DR	
910	116	03768751	02	22652	OBSERVATION	DR	

Current SDAT County Landuse Code



Proposed SDAT County Landuse Code



OCTOBER2019 SDAT EXTRACT

LANDUSE CODE CORRECTION

CLRKGVIC PART-I - SHEET P00076

SDAT_LU_CODE	LUCODE_QC	ACCT #	DISTRICT	PREMISE_ADD_NO	PREMISE_ADDR_ST	PREMISE STRTYPE	NOTES
910	116	03768818	02	22640	OBSERVATION	DR	
910	116	03768820	02	22638	OBSERVATION	DR	
910	116	03768831	02	22636	OBSERVATION	DR	
910	116	03768842	02	22634	OBSERVATION	DR	
910	116	03768853	02	22632	OBSERVATION	DR	
910	116	03768864	02	22630	OBSERVATION	DR	

Current SDAT County Landuse Code



Proposed SDAT County Landuse Code



OCTOBER2019 SDAT EXTRACT

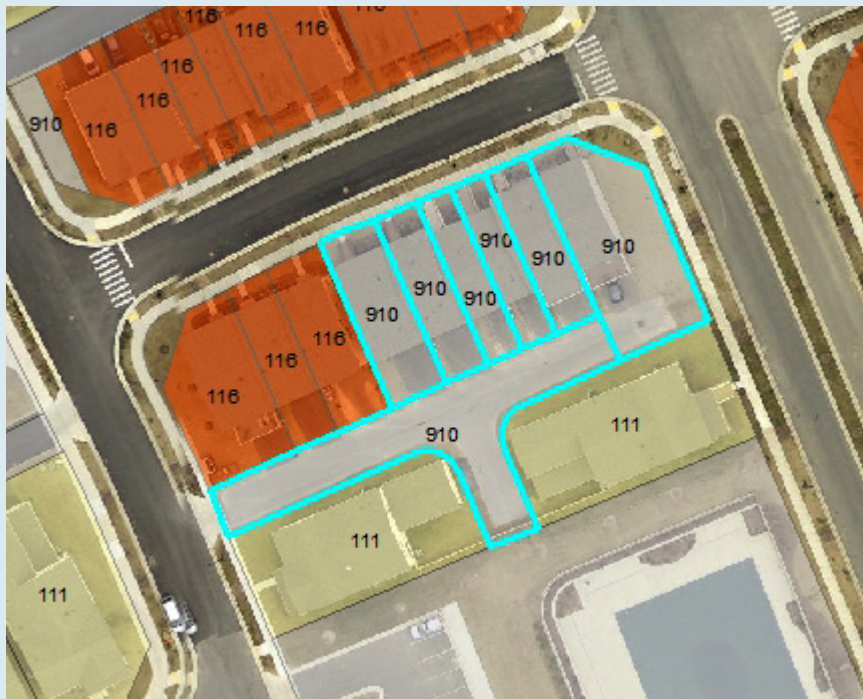


LANDUSE CODE CORRECTION

CLRKGVIC PART-I - SHEET P00077

SDAT_LU_CODE	LUCODE_QC	ACCT #	DISTRICT	PREMISE_ADD_NO	PREMISE_ADDR_ST	PREMISE STRTYPE	NOTES
910	116	03785618	02	13812	PETREL	ST	
910	116	03785620	02	13810	PETREL	ST	
910	116	03785631	02	13808	PETREL	ST	
910	116	03785642	02	13806	PETREL	ST	
910	116	03785653	02	13804	PETREL	ST	
910	740	03785573	02	0	FULMER	AVE	HOA ALLEY
910	116	03785664	02	13802	PETREL	ST	

Current SDAT County Landuse Code



Proposed SDAT County Landuse Code



OCTOBER2019 SDAT EXTRACT

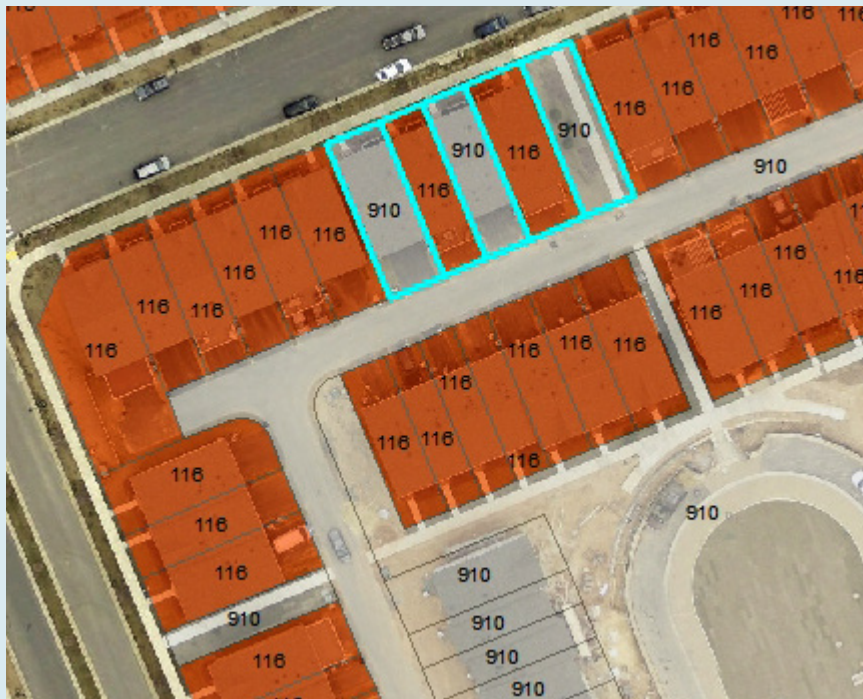


LANDUSE CODE CORRECTION

CLRKGVIC PART-I - SHEET P00078

SDAT_LU_CODE	LUCODE_QC	ACCT #	DISTRICT	PREMISE_ADD_NO	PREMISE_ADDR_ST	PREMISE STRTYPE	NOTES
910	116	03784341	02	13736	PETREL	ST	
116	116	03784352	02	13734	PETREL	ST	
910	116	03784363	02	13732	PETREL	ST	
116	116	03784374	02	13730	PETREL	ST	
910	740	03784272	02	0	PETREL	ST	HOA PED CONX

Current SDAT County Landuse Code



Proposed SDAT County Landuse Code



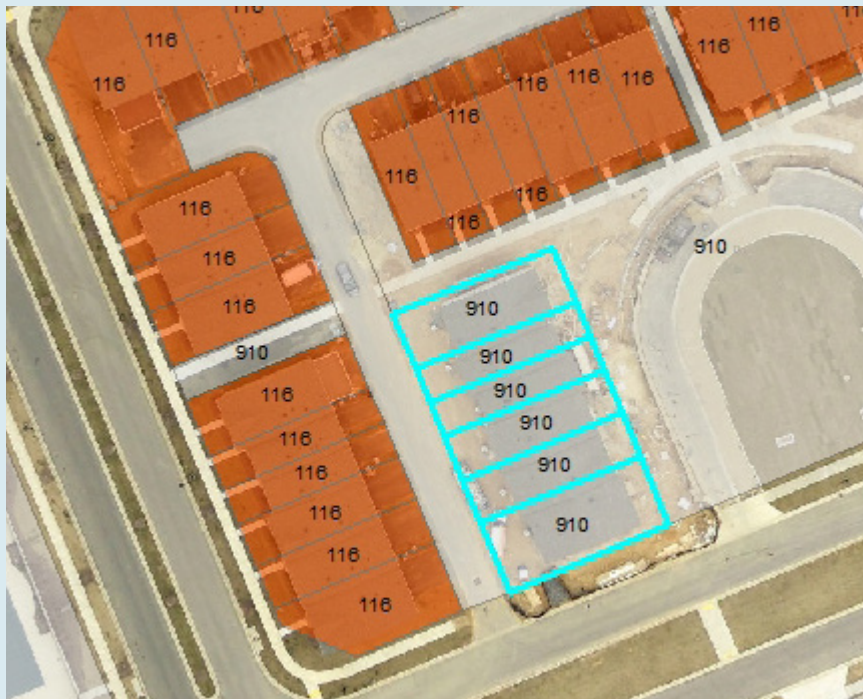
OCTOBER2019 SDAT EXTRACT

LANDUSE CODE CORRECTION

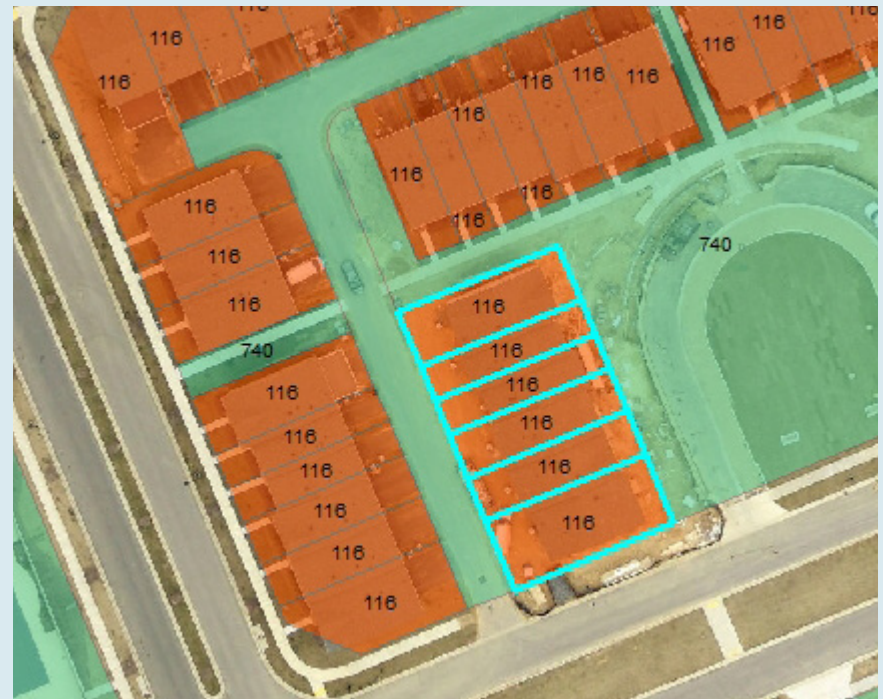
CLRKGVIC PART-I - SHEET P00079

SDAT_LU_CODE	LUCODE_QC	ACCT #	DISTRICT	PREMISE_ADD_NO	PREMISE_ADDR_ST	PREMISE STRTYPE	NOTES
910	116	03786965	02	67	BLUE JAY	WAY	
910	116	03786932	02	61	BLUE JAY	WAY	
910	116	03786943	02	63	BLUE JAY	WAY	
910	116	03786954	02	65	BLUE JAY	WAY	
910	116	03786976	02	69	BLUE JAY	WAY	
910	116	03786987	02	71	BLUE JAY	WAY	

Current SDAT County Landuse Code



Proposed SDAT County Landuse Code



OCTOBER2019 SDAT EXTRACT

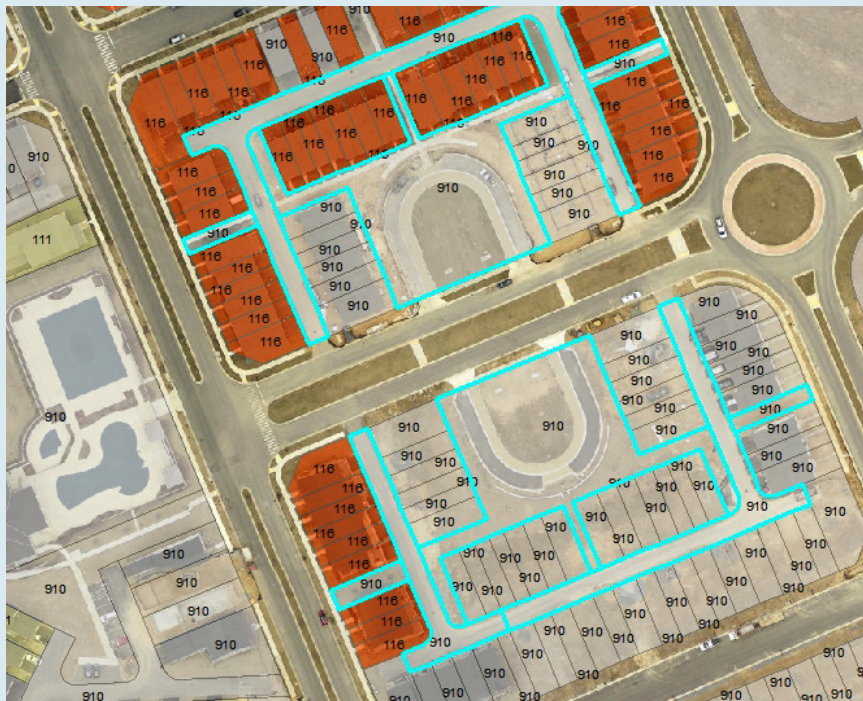


LANDUSE CODE CORRECTION

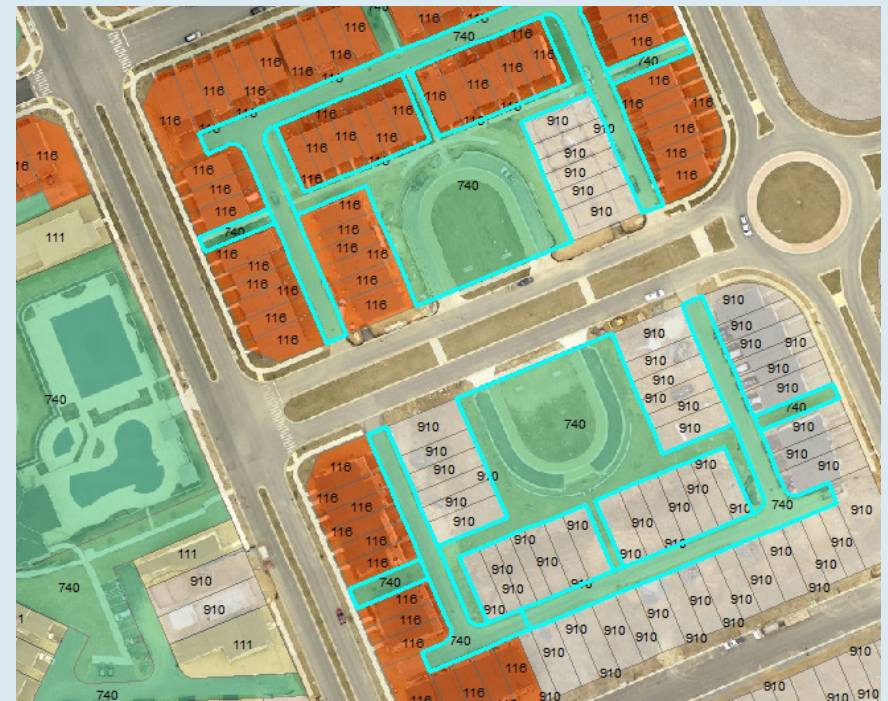
CLRKGVIC PART-I - SHEET P00080

SDAT_LU_CODE	LUCODE_QC	ACCT #	DISTRICT	PREMISE_ADD_NO	PREMISE_ADDR_ST	PREMISE STRTYPE	NOTES
910	740	03786828	02	0	SKIMMER	ST	HOA ALLEY
910	740	03786830	02	0	BLUE JAY	WAY	HOA - MAJOR POS
910	740	03786841	02	0	BROADWAY	AVE	HOA PED CONX
910	740	03786852	02	0	CABIN BRANCH	AVE	HOA PED CONX
910	740	03770993	02	0	SKIMMER	ST	HOA ALLEY
910	740	03771007	02	0	BROADWAY	AVE	HOA PED CONX
910	740	03789401	02	0	CABIN BRANCH	AVE	HOA ALLEY
910	740	03789412	02	0	CABIN BRANCH	AVE	HOA PED CONX
910	740	03789673	02	0	PAINTED LADY	WAY	HOA - MAJOR POS

Current SDAT County Landuse Code



Proposed SDAT County Landuse Code



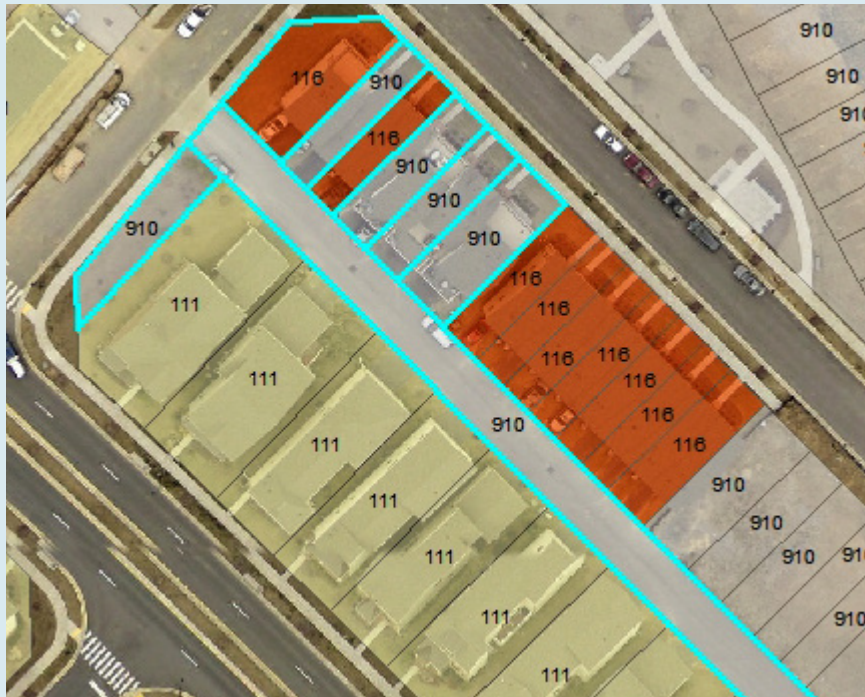
OCTOBER 2019 SDAT EXTRACT

LANDUSE CODE CORRECTION

CLRKGVIC PART-I - SHEET P00081

SDAT_LU_CODE	LUCODE_QC	ACCT #	DISTRICT	PREMISE_ADD_NO	PREMISE_ADDR_ST	PREMISE STRTYPE	NOTES
910	740	03745750	02	0	MERGANSER	ST	HOA POS ALLEY
910	740	03745761	02	0	MERGANSER	ST	HOA SWM (ESD)
116	116	03745806	02	22546	MERGANSER	RD	
910	116	03745817	02	22544	MERGANSER	ST	
910	116	03745828	02	22542	MERGANSER	ST	
116	116	03745783	02	22550	MERGANSER	ST	
910	116	03745794	02	22548	MERGANSER	ST	
910	116	03745830	02	22540	MERGANSER	ST	

Current SDAT County Landuse Code



Proposed SDAT County Landuse Code



OCTOBER2019 SDAT EXTRACT

LANDUSE CODE CORRECTION

CLRKGVIC PART-I - SHEET P00082

SDAT_LU_CODE	LUCODE_QC	ACCT #	DISTRICT	PREMISE_ADD_NO	PREMISE_ADDR_ST	PREMISE STRTYPE	NOTES
111	116	03668343	02	12462	HORSESHOE BEND	CIR	
111	116	03668354	02	12460	HORSESHOE BEND	CIR	
111	116	03668365	02	12458	HORSESHOE BEND	CIR	

Current SDAT County Landuse Code



OCTOBER2019 SDAT EXTRACT

Proposed SDAT County Landuse Code



1

LANDUSE CODE CORRECTION

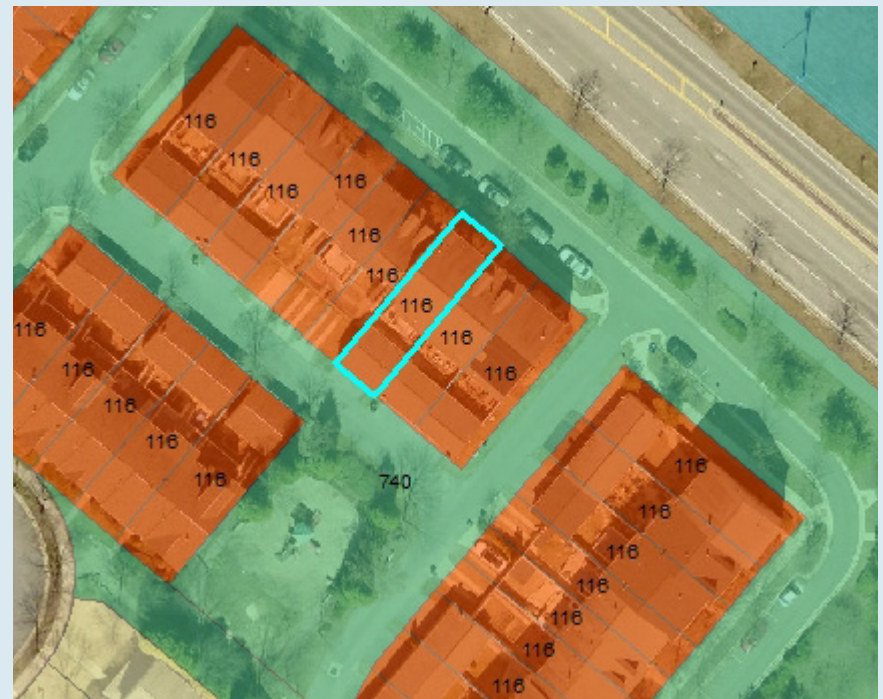
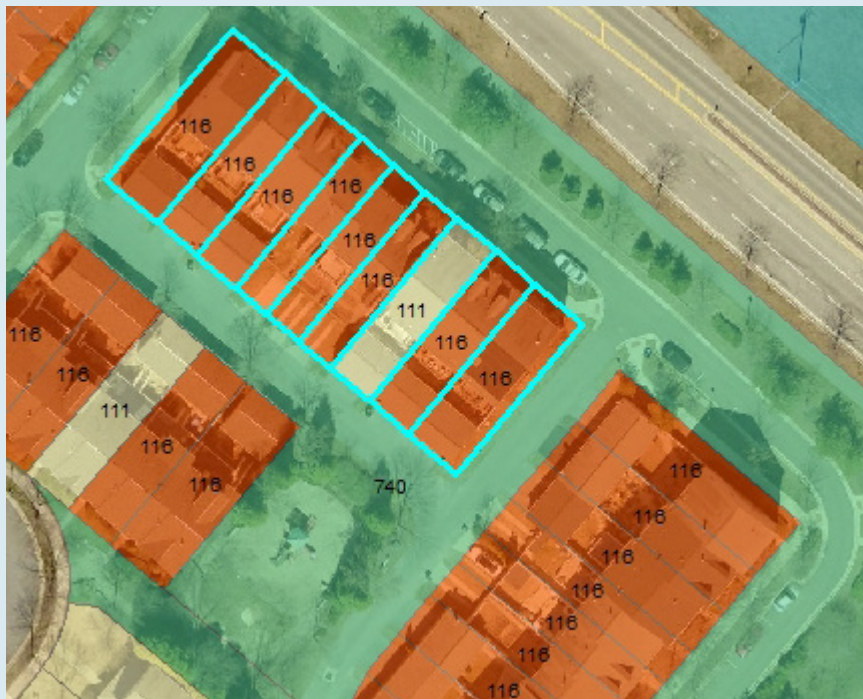
CLRKGVIC PART-I - SHEET P00083

SDAT_LU_CODE	LUCODE_QC	ACCT #	DISTRICT	PREMISE_ADD_NO	PREMISE_ADDR_ST	PREMISE STRTYPE	NOTES
111	116	03354024	02	12704	PIEDMONT TRAIL	RD	
116	116	03354035	02	12702	PIEDMONT TRAIL	RD	
116	116	03354046	02	12700	PIEDMONT TRAIL	RD	
116	116	03353997	02	12710	PIEDMONT TRAIL	RD	
116	116	03354002	02	12708	PIEDMONT TRAIL	RD	
116	116	03353964	02	12716	PIEDMONT TRAIL	RD	
116	116	03353975	02	12714	PIEDMONT TRAIL	RD	
116	116	03353986	02	12712	PIEDMONT TRAIL	RD	

Current SDAT County Landuse Code

Proposed SDAT County Landuse Code

OCTOBER2019 SDAT EXTRACT



LANDUSE CODE CORRECTION

SDAT_LU_CODE	LUCODE_QC	ACCT #	DISTRICT	PREMISE_ADD_NO	PREMISE_ADDR_ST	PREMISE STRTYPE	NOTES
116	116	03354148	02	23611	CLARKSMEAD	DR	
116	116	03354150	02	23613	CLARKSMEAD	DR	
111	116	03354161	02	23615	CLARKSMEAD	DR	
116	116	03354172	02	23617	CLARKSMEAD	DR	
116	116	03354183	02	23619	CLARKSMEAD	DR	

Current SDAT County Landuse Code

Proposed SDAT County Landuse Code



OCTOBER2019 SDAT EXTRACT

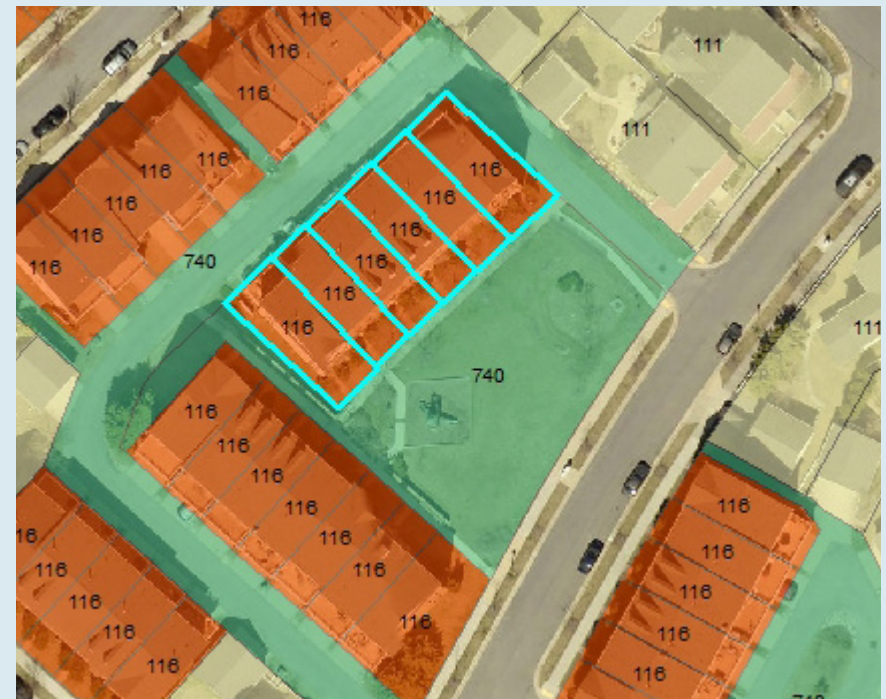
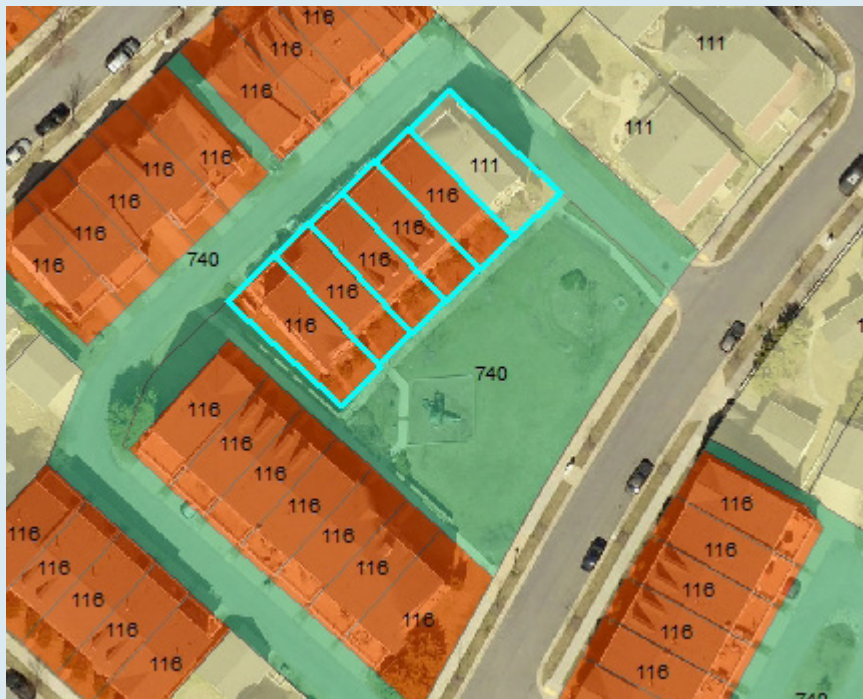


LANDUSE CODE CORRECTION

SDAT_LU_CODE	LUCODE_QC	ACCT #	DISTRICT	PREMISE_ADD_NO	PREMISE_ADDR_ST	PREMISE STRTYPE	NOTES
116	116	03404164	02	23420	WINEMILLER	WAY	
116	116	03404175	02	23418	WINEMILLER	WAY	
111	116	03404131	02	23426	WINEMILLER	WAY	
116	116	03404142	02	23424	WINEMILLER	WAY	
116	116	03404153	02	23422	WINEMILLER	WAY	
116	116	03481231	02	23416	WINEMILLER	WAY	

Current SDAT County Landuse Code

Proposed SDAT County Landuse Code



OCTOBER2019 SDAT EXTRACT

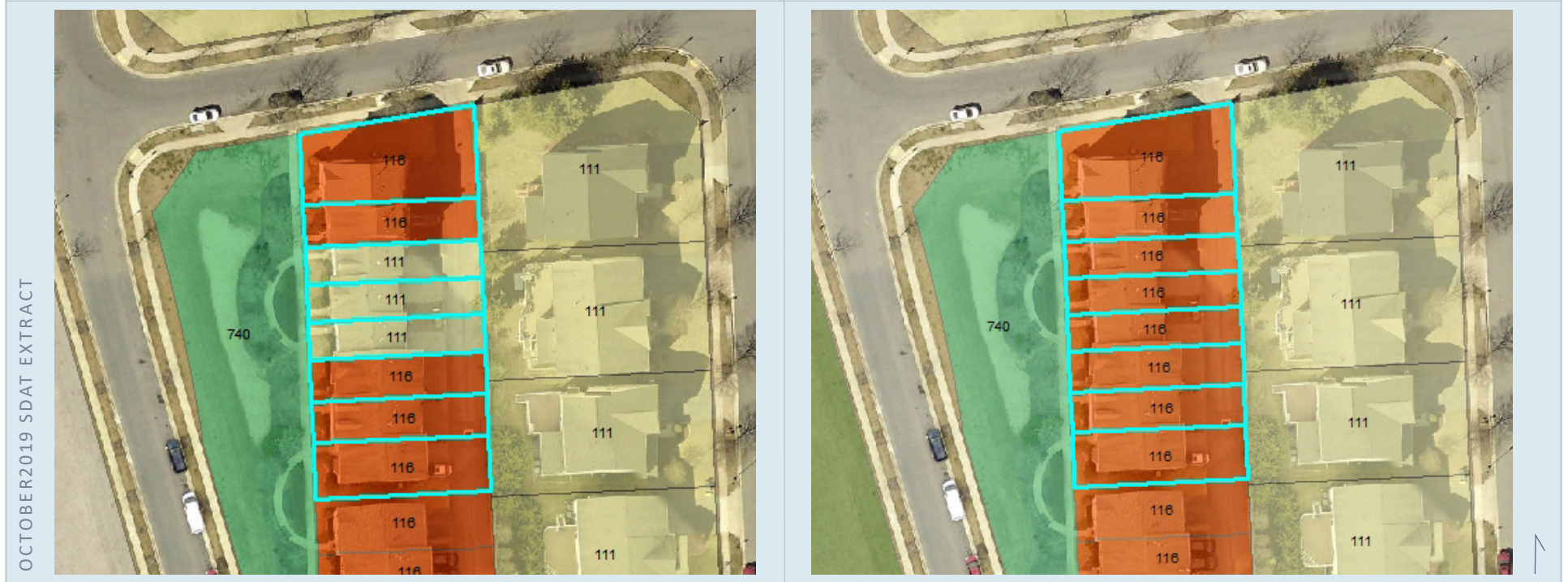
LANDUSE CODE CORRECTION

CLRKGVIC PART-I - SHEET P00086

SDAT_LU_CODE	LUCODE_QC	ACCT #	DISTRICT	PREMISE_ADD_NO	PREMISE_ADDR_ST	PREMISE STRTYPE	NOTES
116	116	03452375	02	21817	SENECA AYR	DR	
116	116	03452386	02	21819	SENECA AYR	DR	
116	116	03452397	02	21821	SENECA AYR	DR	
111	116	03452400	02	21823	SENECA AYR	DR	
111	116	03452411	02	21825	SENECA AYR	DR	
111	116	03452422	02	21827	SENECA AYR	DR	
116	116	03452433	02	21829	SENECA AYR	DR	
116	116	03452444	02	21831	SENECA AYR	DR	

Current SDAT County Landuse Code

Proposed SDAT County Landuse Code



LANDUSE CODE CORRECTION

SDAT_LU_CODE	LUCODE_QC	ACCT #	DISTRICT	PREMISE_ADD_NO	PREMISE_ADDR_ST	PREMISE STRTYPE	NOTES
116	116	03452364	02	21815	SENECA AYR	DR	
116	116	03452320	02	21807	SENECA AYR	DR	
111	116	03452331	02	21809	SENECA AYR	DR	
116	116	03452342	02	21811	SENECA AYR	DR	
116	116	03452353	02	21813	SENECA AYR	DR	
116	116	03452307	02	21803	SENECA AYR	DR	
116	116	03452318	02	21805	SENECA AYR	DR	
116	116	03452295	02	21801	SENECA AYR	DR	



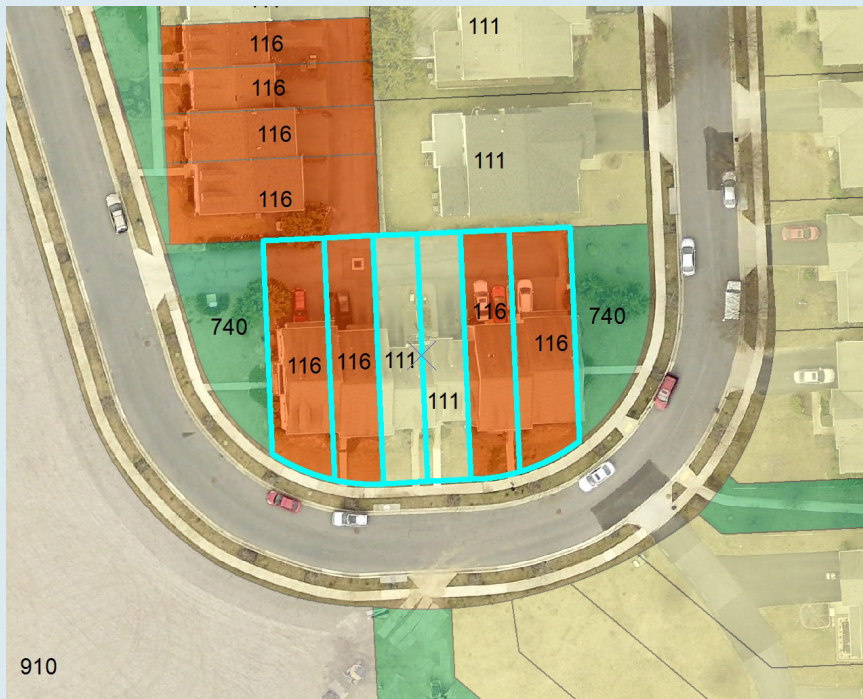
LANDUSE CODE CORRECTION

CLRKGVIC PART-I - SHEET P00088

SDAT_LU_CODE	LUCODE_QC	ACCT #	DISTRICT	PREMISE_ADD_NO	PREMISE_ADDR_ST	PREMISE STRTYPE	NOTES
116	116	03452238	02	21715	SENECA AYR	DR	
116	116	03452240	02	21717	SENECA AYR	DR	
111	116	03452251	02	21719	SENECA AYR	DR	
111	116	03452262	02	21721	SENECA AYR	DR	
116	116	03452284	02	21725	SENECA AYR	DR	
116	116	03452273	02	21723	SENECA AYR	DR	

Current SDAT County Landuse Code

Proposed SDAT County Landuse Code



LANDUSE CODE CORRECTION

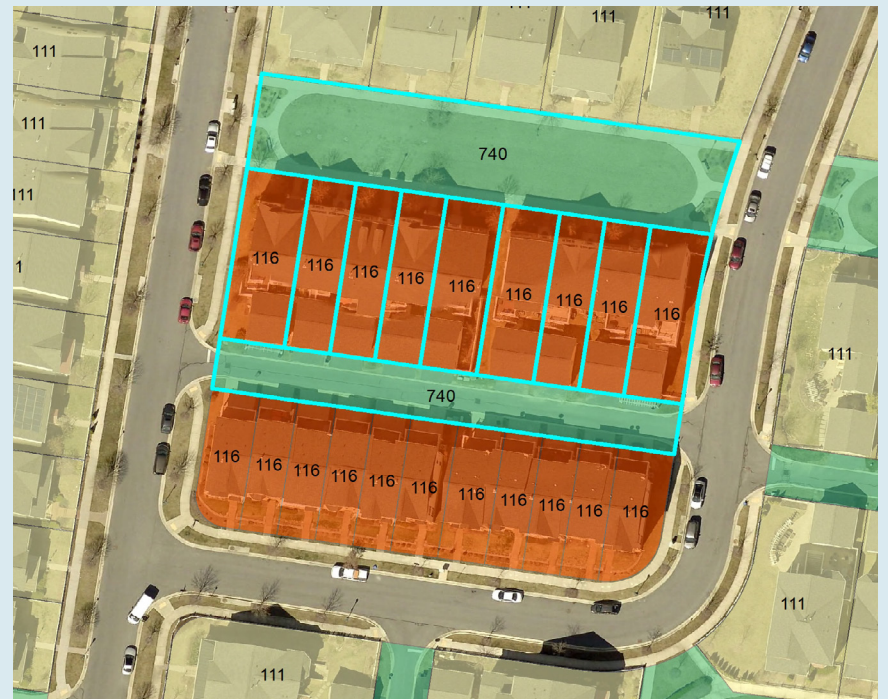
CLRKGVIC PART-I - SHEET P00089

SDAT_LU_CODE	LUCODE_QC	ACCT #	DISTRICT	PREMISE_ADD_NO	PREMISE_ADDR_ST	PREMISE STRTYPE	NOTES
111	116	03582131	02	23137	YELLOWWOOD	DR	
116	116	03582084	02	23127	YELLOWWOOD	DR	
116	116	03582095	02	23129	YELLOWWOOD	DR	
116	116	03582107	02	23131	YELLOWWOOD	DR	
116	116	03582118	02	23133	YELLOWWOOD	DR	
111	116	03582120	02	23135	YELLOWWOOD	DR	
910	740	03582040	02	0	YELLOWWOOD	DR	HOA ALLEY
116	116	03582051	02	23121	YELLOWWOOD	DR	
116	116	03582062	02	23123	YELLOWWOOD	DR	
910	740	03581854	02	0	YELLOWWOOD	DR	HOA PED CONX
116	116	03582073	02	23125	YELLOWWOOD	DR	

Current SDAT County Landuse Code



Proposed SDAT County Landuse Code

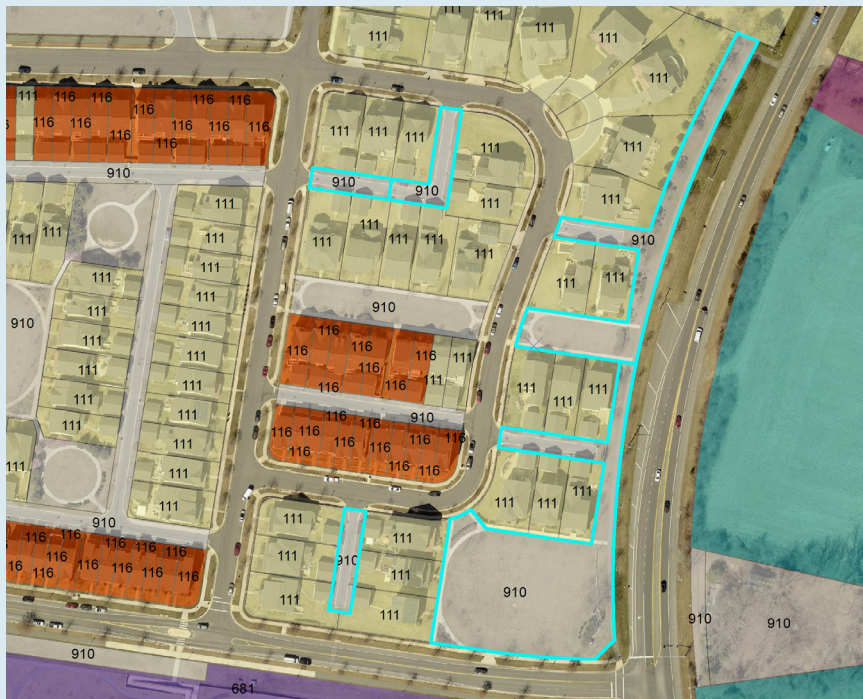


OCTOBER2019 SDAT EXTRACT

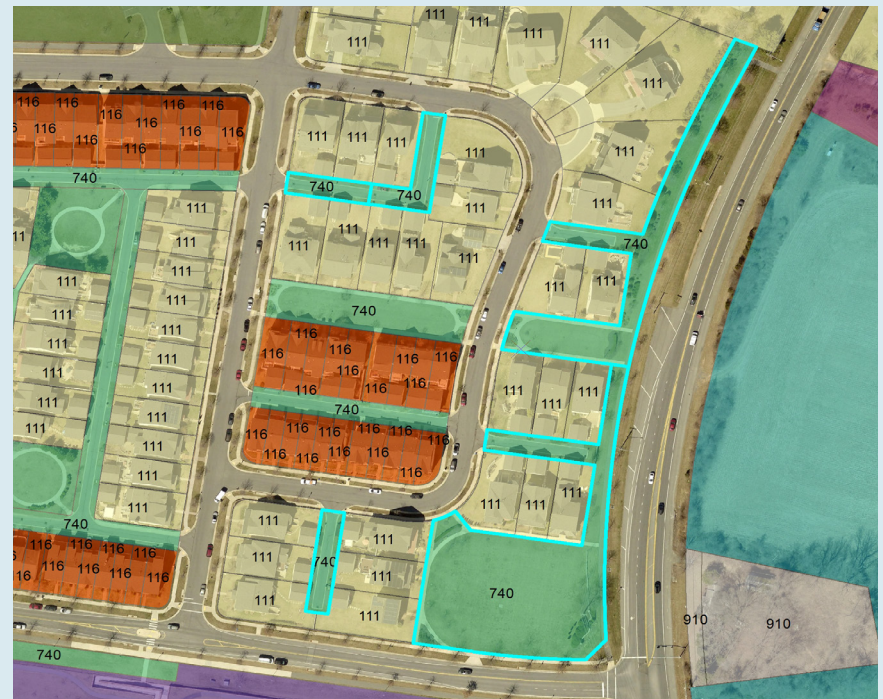
LANDUSE CODE CORRECTION

SDAT_LU_CODE	LUCODE_QC	ACCT #	DISTRICT	PREMISE_ADD_NO	PREMISE_ADDR_ST	PREMISE STRTYPE	NOTES
910	740	03582255	02	0	ARORA HILLS	DR	HOA MAJ POS
910	740	03581626	02	0	YELLOWWOOD	DR	HOA ALLEY
910	740	03581843	02	0	ARORA HILLS	DR	HOA ALLEY
910	740	03581945	02	0	ARORA HILLS	DR	HOA MIN POS
910	740	03582266	02	0	ARORA HILLS	DR	HOA ALLEY

Current SDAT County Landuse Code



Proposed SDAT County Landuse Code



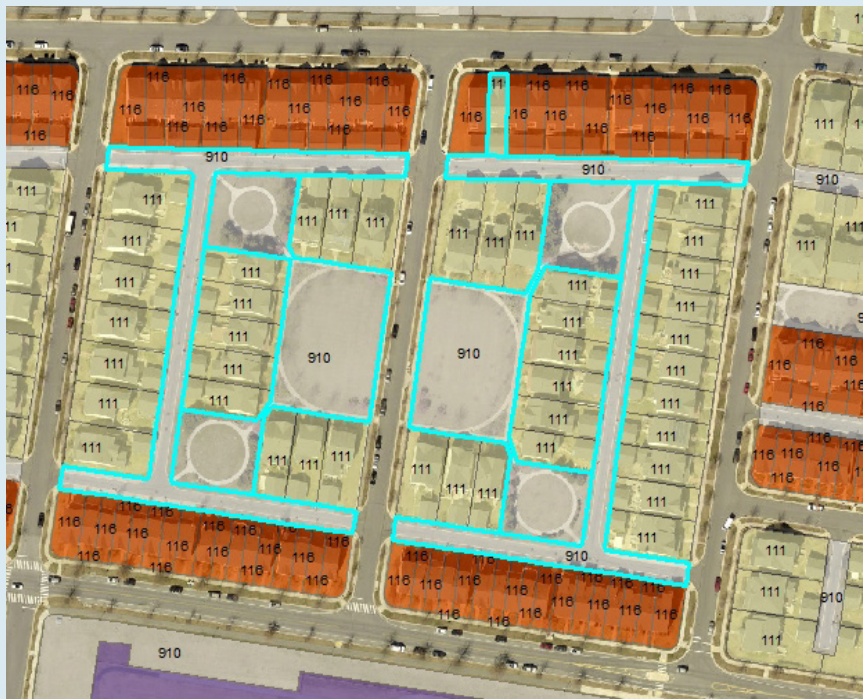
OCTOBER2019 SDAT EXTRACT

LANDUSE CODE CORRECTION

CLRKGVIC PART-I - SHEET P00091

SDAT_LU_CODE	LUCODE_QC	ACCT #	DISTRICT	PREMISE_ADD_NO	PREMISE_ADDR_ST	PREMISE STRTYPE	NOTES
910	740	03581694	02	0	YELLOWWOOD	DR	HOA ALLEY
111	116	03581717	02	23337	ARORA HILLS	DR	
910	740	03574756	02	0	YELLOWWOOD	DR	HOA ALLEY
910	740	03574767	02	0	MISTFLOWER	DR	HOA MAJ POS
910	740	03574415	02	0	MEADOW MIST	RD	HOA ALLEY
910	740	03574426	02	0	MISTFLOWER	DR	HOA MAJ POS

Current SDAT County Landuse Code



Proposed SDAT County Landuse Code



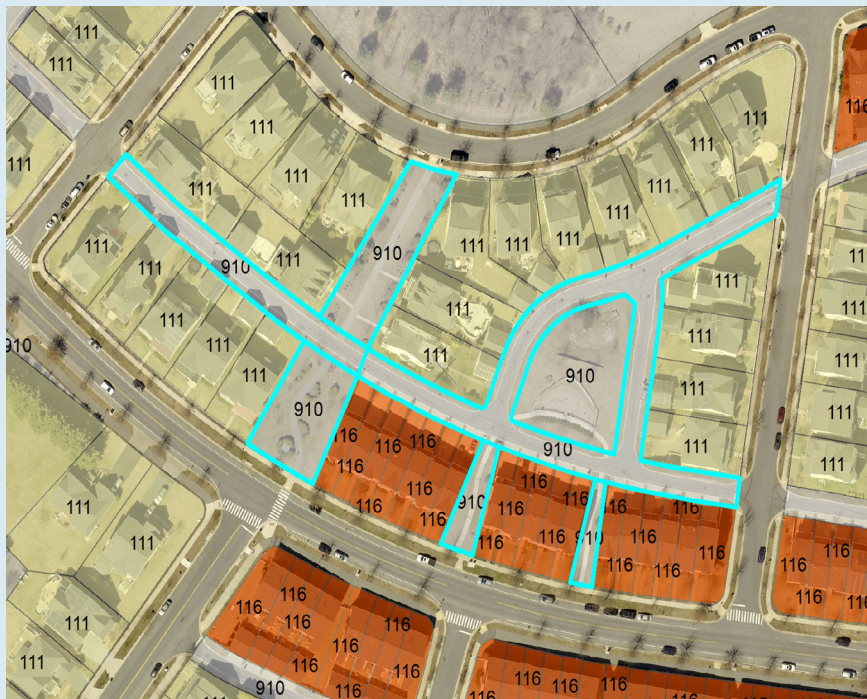
OCTOBER 2019 SDAT EXTRACT

LANDUSE CODE CORRECTION

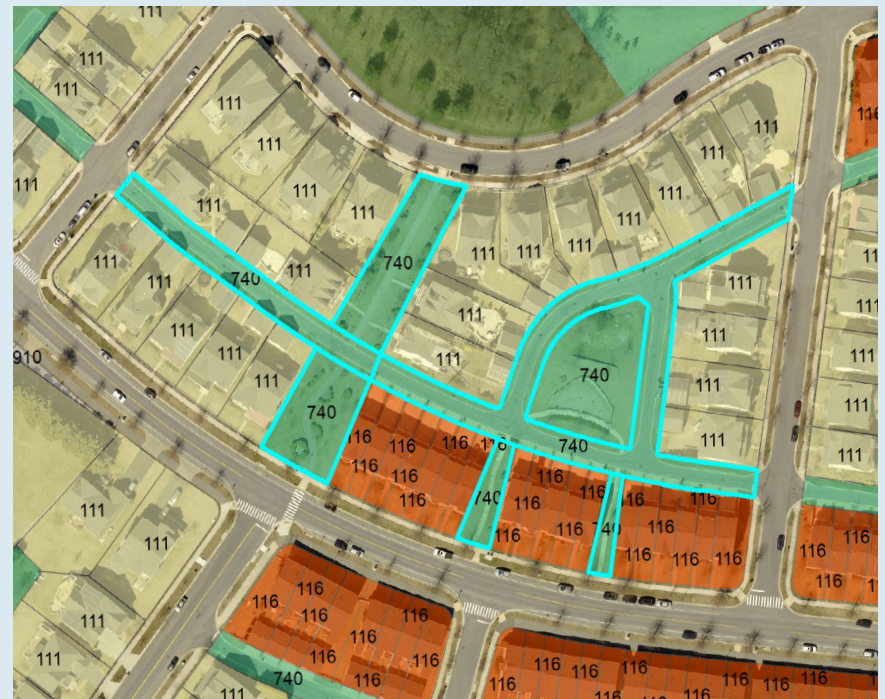
CLRKGVIC PART-I - SHEET P00092

SDAT_LU_CODE	LUCODE_QC	ACCT #	DISTRICT	PREMISE_ADD_NO	PREMISE_ADDR_ST	PREMISE STRTYPE	NOTES
910	740	03574038	02	0	SERVICEBERRY	DR	HOA MAJ POS
910	740	03574040	02	0	SERVICEBERRY	DR	HOA ALLEY
910	740	03573342	02	0	SKYLARK	RD	HOA PED CONX
910	740	03573353	02	0	SKYLARK	RD	HOA PED CONX
910	740	03575410	02	0	ARORA HILLS	DR	HOA PED CONX
910	740	03575421	02	0	INKBERRY HILL	DR	HOA ALLEY
910	740	03575055	02	0	SKYLARK	RD	HOA PED CONX

Current SDAT County Landuse Code



Proposed SDAT County Landuse Code



OCTOBER2019 SDAT EXTRACT

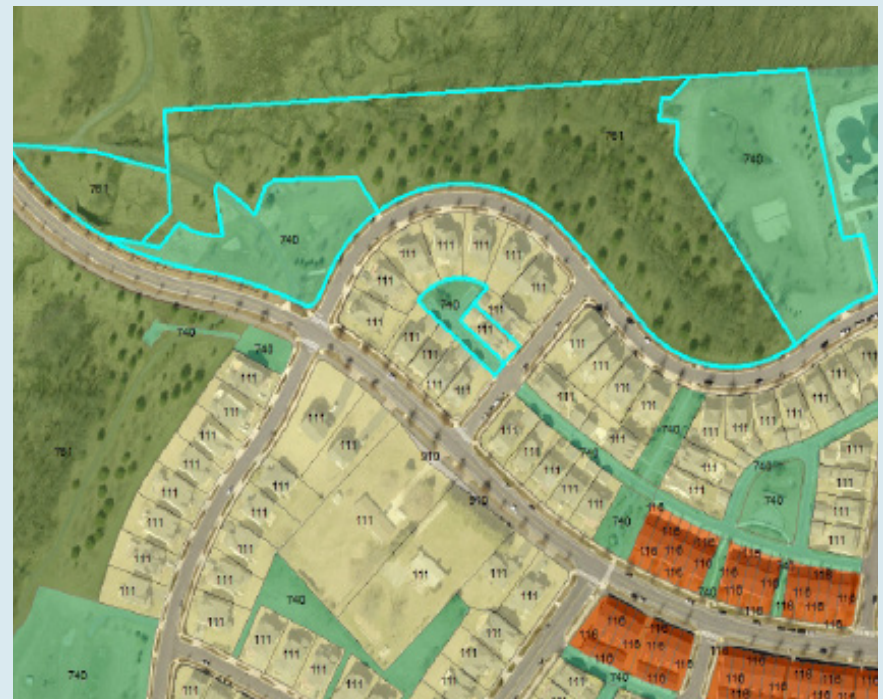
LANDUSE CODE CORRECTION

CLRKGVIC PART-I - SHEET P00093

SDAT_LU_CODE	LUCODE_QC	ACCT #	DISTRICT	PREMISE_ADD_NO	PREMISE_ADDR_ST	PREMISE STRTYPE	NOTES
910	03600127	03600127	02	0	SKYLARK	RD	MNCPPC PARKS
910	03600105	03600105	02	0	ARORA HILLS	DR	MNCPPC PARKS
910	740	03600116	02	0	SKYLARK	RD	HOA PRIV POS
910	740	03600093	02	0	ARORA HILLS	DR	HOA PRIV POS
910	740	03575408	02	0	INKBERRY HILL	DR	HOA PRIV POS

Current SDAT County Landuse Code

Proposed SDAT County Landuse Code

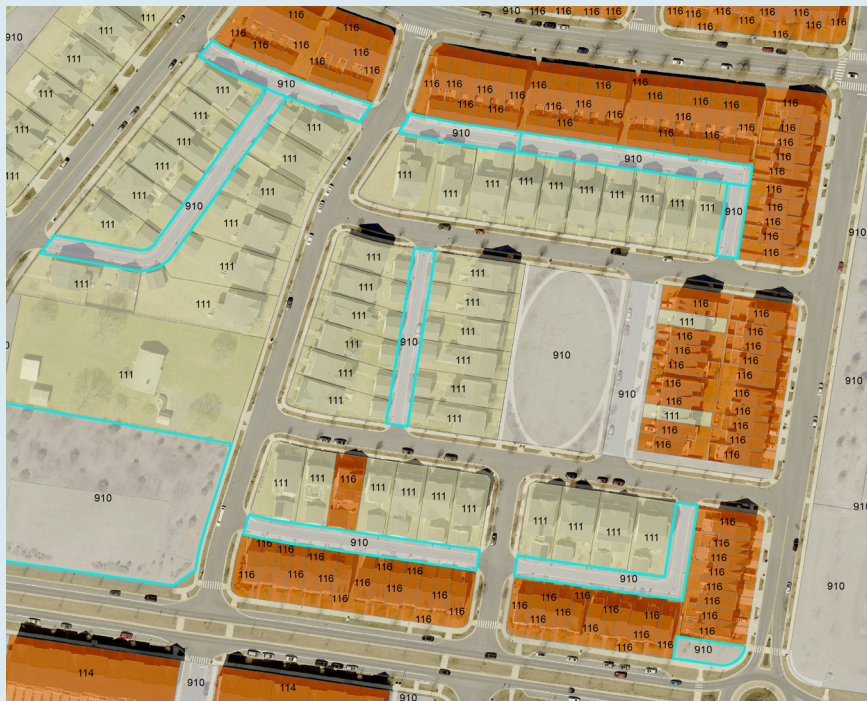


OCTOBER2019 SDAT EXTRACT

LANDUSE CODE CORRECTION

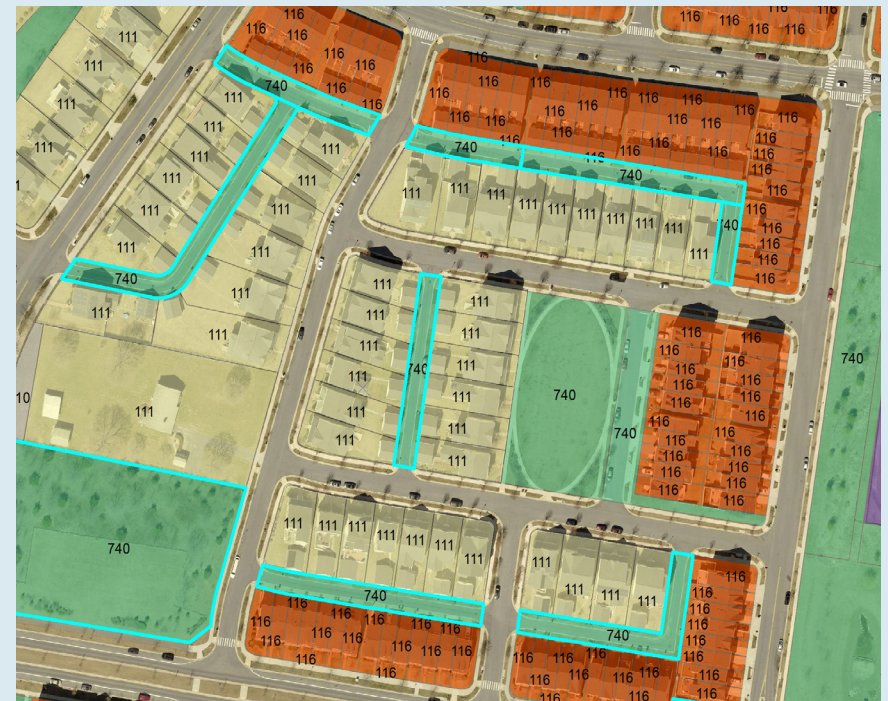
SDAT_LU_CODE	LUCODE_QC	ACCT #	DISTRICT	PREMISE_ADD_NO	PREMISE_ADDR_ST	PREMISE STRTYPE	NOTES
910	740	03616065	02	0	TULIP STEM	DR	HOA ALLEY
910	740	03616418	02	0	MEADOW MIST	RD	HOA SWM (ESD)
910	740	03616054	02	0	TULIP STEM	DR	HOA ALLEY
910	740	03616704	02	0	SPICEBUSH	DR	HOA MAJ POS
910	740	03616715	02	0	SPICEBUSH	DR	HOA ALLEY
910	740	03616726	02	0	STEEPLEBUSH	DR	HOA ALLEY
910	740	03575157	02	0	SKYLARK	RD	HOA ALLEY
910	740	03573331	02	0	SPICEBUSH	DR	HOA ALLEY
910	740	03599791	02	0	NEWCUT	RD	HOA ALLEY
910	740	03616852	02	0	SPICEBUSH	DR	HOA ALLEY

Current SDAT County Landuse Code



OCTOBER2019 SDAT EXTRACT

Proposed SDAT County Landuse Code



LANDUSE CODE CORRECTION

CLRKGVIC PART-I - SHEET P00095

SDAT_LU_CODE	LUCODE_QC	ACCT #	DISTRICT	PREMISE_ADD_NO	PREMISE_ADDR_ST	PREMISE STRTYPE	NOTES
910	116	03755496	02	22672	CABIN BRANCH	AVE	
910	116	03755508	02	22670	CABIN BRANCH	AVE	
910	116	03755510	02	13801	GREBE	ST	
910	116	03755521	02	13803	GREBE	ST	
910	740	03755428	02	0	GREBE	ST	HOA ALLEY
910	740	03755430	02	0	GREBE	ST	HOA POS
910	740	03755441	02	0	ESTUARY	DR	HOA POS
910	116	03755463	02	13802	ESTUARY	DR	
910	116	03755474	02	13800	ESTUARY	DR	
910	116	03755485	02	22674	CABIN BRANCH	AVE	
910	740	03755452	02	0	ESTUARY	DR	HOA POS

Current SDAT County Landuse Code

Proposed SDAT County Landuse Code



OCTOBER2019 SDAT EXTRACT



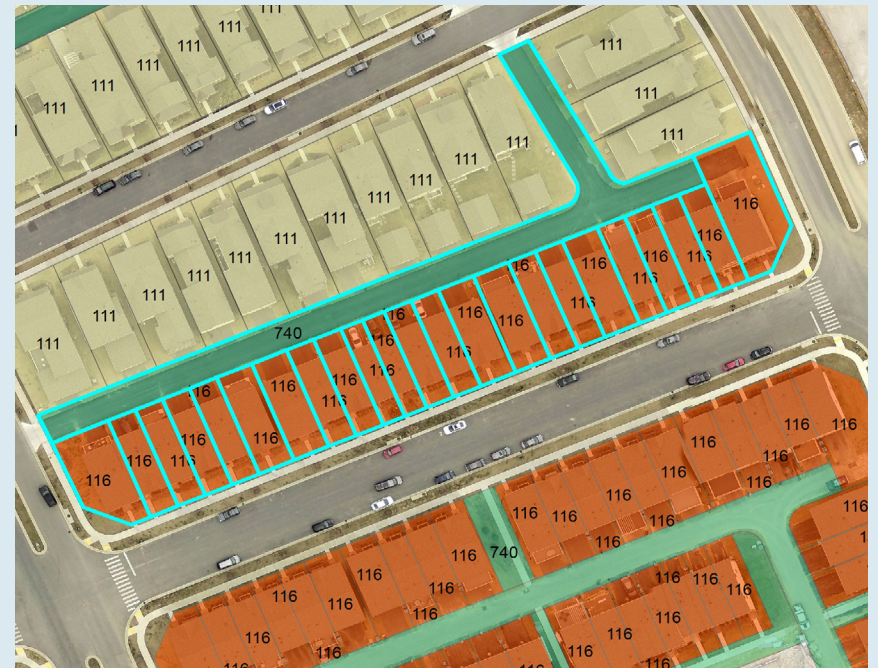
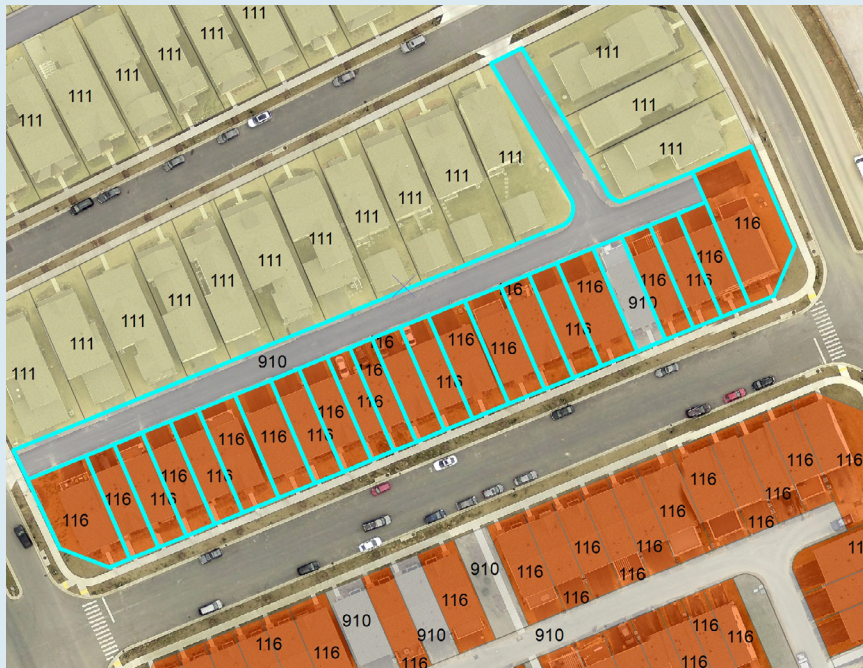
LANDUSE CODE CORRECTION

CLRKGVIC PART-I - SHEET P00096

SDAT_LU_CODE	LUCODE_QC	ACCT #	DISTRICT	PREMISE_ADD_NO	PREMISE_ADDR_ST	PREMISE STRTYPE	NOTES
116	116	03781495	02	13705	PETREL	ST	
116	116	03781507	02	13707	PETREL	ST	
910	116	03781518	02	13709	PETREL	ST	
910	740	03781438	02	0	LAPWING	WAY	HOA ALLEY
116	116	03781473	02	13701	PETREL	ST	
116	116	03781484	02	13703	PETREL	ST	

Current SDAT County Landuse Code

Proposed SDAT County Landuse Code



OCTOBER2019 SDAT EXTRACT

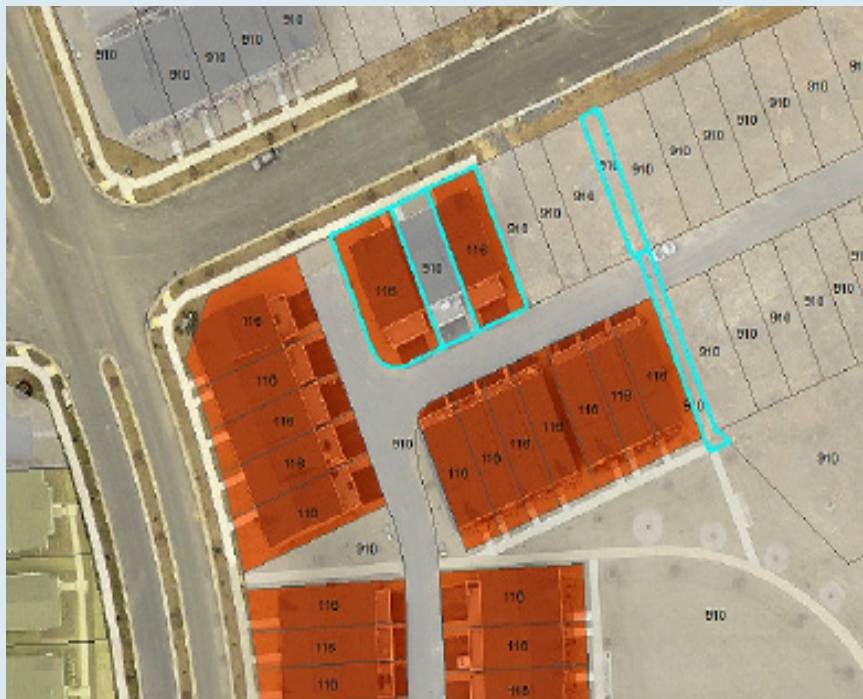
LANDUSE CODE CORRECTION

CLRKGVIC PART-I - SHEET **P00097**

SDAT_LU_CODE	LUCODE_QC	ACCT #	DISTRICT	PREMISE_ADD_NO	PREMISE_ADDR_ST	PREMISE STRTYPE	NOTES
116	03771430	03771430	02	13646	HARRIER	WAY	
116	03771417	03771417	02	13650	HARRIER	WAY	
910	116	03771428	02	13648	HARRIER	WAY	
910	740	03771166	02	0	HARRIER	WAY	HOA PED CONX
910	740	03788953	02	0	HARRIET	WAY	HOA PED CONX

Current SDAT County Landuse Code

Proposed SDAT County Landuse Code



OCTOBER2019 SDAT EXTRACT



LANDUSE CODE CORRECTION

CLRKGVIC PART-I - SHEET P00098

SDAT_LU_CODE	LUCODE_QC	ACCT #	DISTRICT	PREMISE_ADD_NO	PREMISE_ADDR_ST	PREMISE STRTYPE	NOTES
116	116	03617311	02	11911	LITTLE SENECA	PKY	
116	116	03617322	02	11913	LITTLE SENECA	PKY	
116	116	03617333	02	11915	LITTLE SENECA	PKY	
116	116	03617344	02	11917	LITTLE SENECA	PKY	
116	116	03617402	02	11929	LITTLE SENECA	PKY	
116	116	03617355	02	11919	LITTLE SENECA	PKY	
111	116	03617366	02	11921	LITTLE SENECA	PKY	
116	116	03617377	02	11923	LITTLE SENECA	PKY	
116	116	03617388	02	11925	LITTLE SENECA	PKY	
116	116	03617390	02	11927	LITTLE SENECA	PKY	

Current SDAT County Landuse Code



Proposed SDAT County Landuse Code



OCTOBER2019 SDAT EXTRACT



LANDUSE CODE CORRECTION

CLRKGVIC PART-I - SHEET P00099

SDAT_LU_CODE	LUCODE_QC	ACCT #	DISTRICT	PREMISE_ADD_NO	PREMISE_ADDR_ST	PREMISE STRTYPE	NOTES
116	116	03521601	02	12541	BLUE SKY	DR	
116	116	03521612	02	12543	BLUE SKY	DR	
116	116	03521521	02	23215	RAINBOW ARCH	DR	
116	116	03521532	02	23217	RAINBOW ARCH	DR	
116	116	03521543	02	23219	RAINBOW ARCH	DR	
116	116	03521554	02	23221	RAINBOW ARCH	DR	
111	116	03521565	02	23223	RAINBOW ARCH	DR	
116	116	03521576	02	12535	BLUE SKY	DR	
116	116	03521587	02	12537	BLUE SKY	DR	
116	116	03521598	02	12539	BLUE SKY	DR	

Current SDAT County Landuse Code

Proposed SDAT County Landuse Code



OCTOBER2019 SDAT EXTRACT

